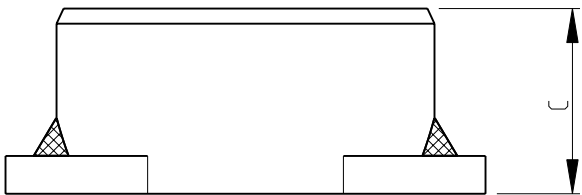
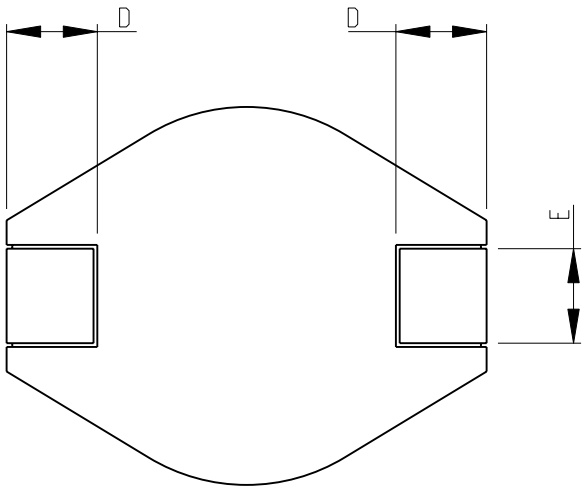
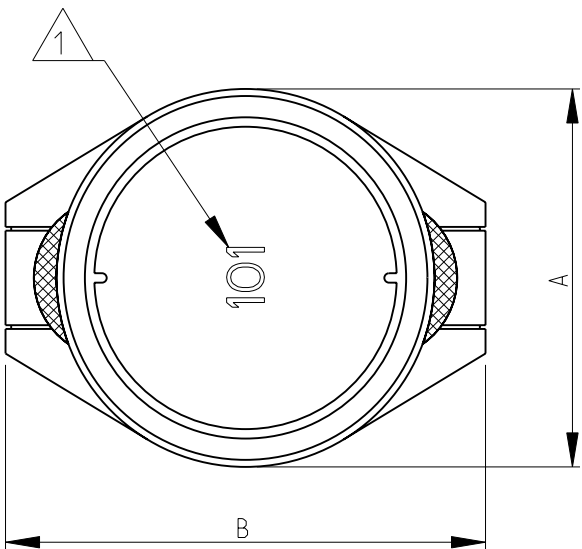
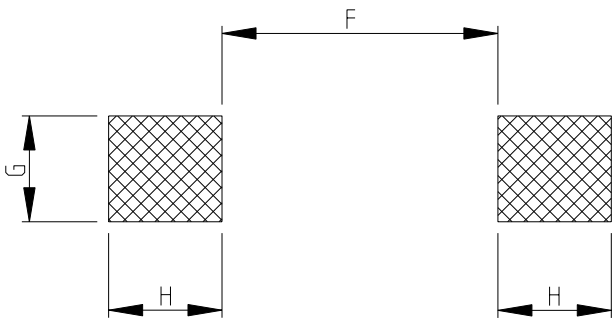


LOC	DIST	REVISIONS					
		P	LTR	DESCRIPTION	DATE	DWN	APVD
E	B		BA	NEW RELEASE	29-Aug-08	SM	St.P



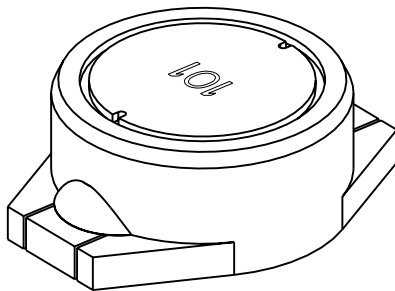
RECOMMENDED LAND PATTERN



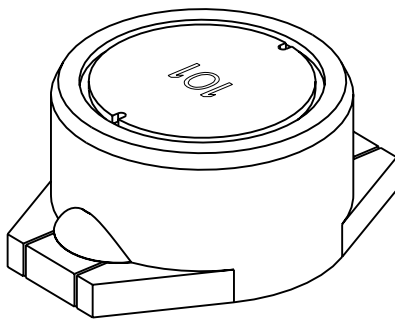
- 1 INDUCTANCE CODE
- 2 AVAILABLE IN 3 DIFFERENT SIZES
- 3 FOR FURTHER INFORMATION SEE DATA SHEET FOR 3630 SERIES-POWER INDUCTORS

RoHS Compliant

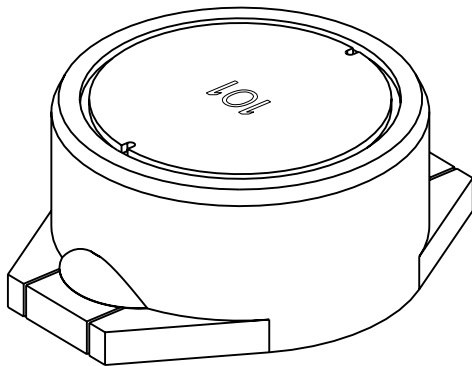
SERIES 3630A AS SHOWN




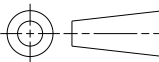
SERIES 3630B AS SHOWN



SERIES 3630C AS SHOWN



SERIES	A	B	C	D	E	F (Ref)	G (Ref)	H (Ref)
3630A	8.0±0.2	10.5±0.2	3.7±0.3	2.1±0.2	2.0±0.2	5.7	2.2	2.4
3630B	8.0±0.2	10.5±0.2	4.5±0.3	2.1±0.2	2.0±0.2	5.7	2.2	2.4
3630C	10.0±0.2	12.7±0.2	4.9±0.3	2.4±0.2	2.5±0.2	7.3	2.8	3.0

THIS DRAWING IS A CONTROLLED DOCUMENT FOR TYCO ELECTRONICS CORPORATION IT IS SUBJECT TO CHANGE AND THE CONTROLLING ENGINEERING ORGANIZATION SHOULD BE CONTACTED FOR THE LATEST REVISION.		DWN		29-Aug-08		 Tyco Electronics Tyco Electronics Corporation Dorcan, Swindon, SN3 5HH															
		CHK		29-Aug-08																	
		PRAKASH.S																			
<div>DIMENSIONS:</div> <div>mm</div> <div></div>		<div>TOLERANCES UNLESS OTHERWISE SPECIFIED:</div> <div>0 PLC ±0.2</div> <div>1 PLC ±0.1</div> <div>2 PLC ±</div> <div>3 PLC ±</div> <div>4 PLC ±</div> <div>ANGLES ±5°</div>		APVD		29-Aug-08		NAME SHIELDED SMD POWER INDUCTORS SERIES 3630													
				PRODUCT SPEC																	
				-																	
				APPLICATION SPEC																	
				-																	
MATERIAL		-		FINISH		-		SIZE		CAGE CODE		DRAWING NO		RESTRICTED TO							
								A 3		00779		C=1676940		-							
CUSTOMER DRAWING										SCALE		5:1		SHEET		1 OF 1		REV		BA	

# Mouser Electronics

Authorized Distributor

Click to View Pricing, Inventory, Delivery & Lifecycle Information:

[TE Connectivity:](#)

[3630C332KT](#)