

4

3

2

1

| LOC E | DIST B | REVISIONS | | | | | |
|----------|-----------|-----------|-----|-------------|-----------|-----|------|
| | | P | LTR | DESCRIPTION | DATE | DWN | APVD |
| | | | BA | NEW RELEASE | 30-Jul-08 | SM | St.P |

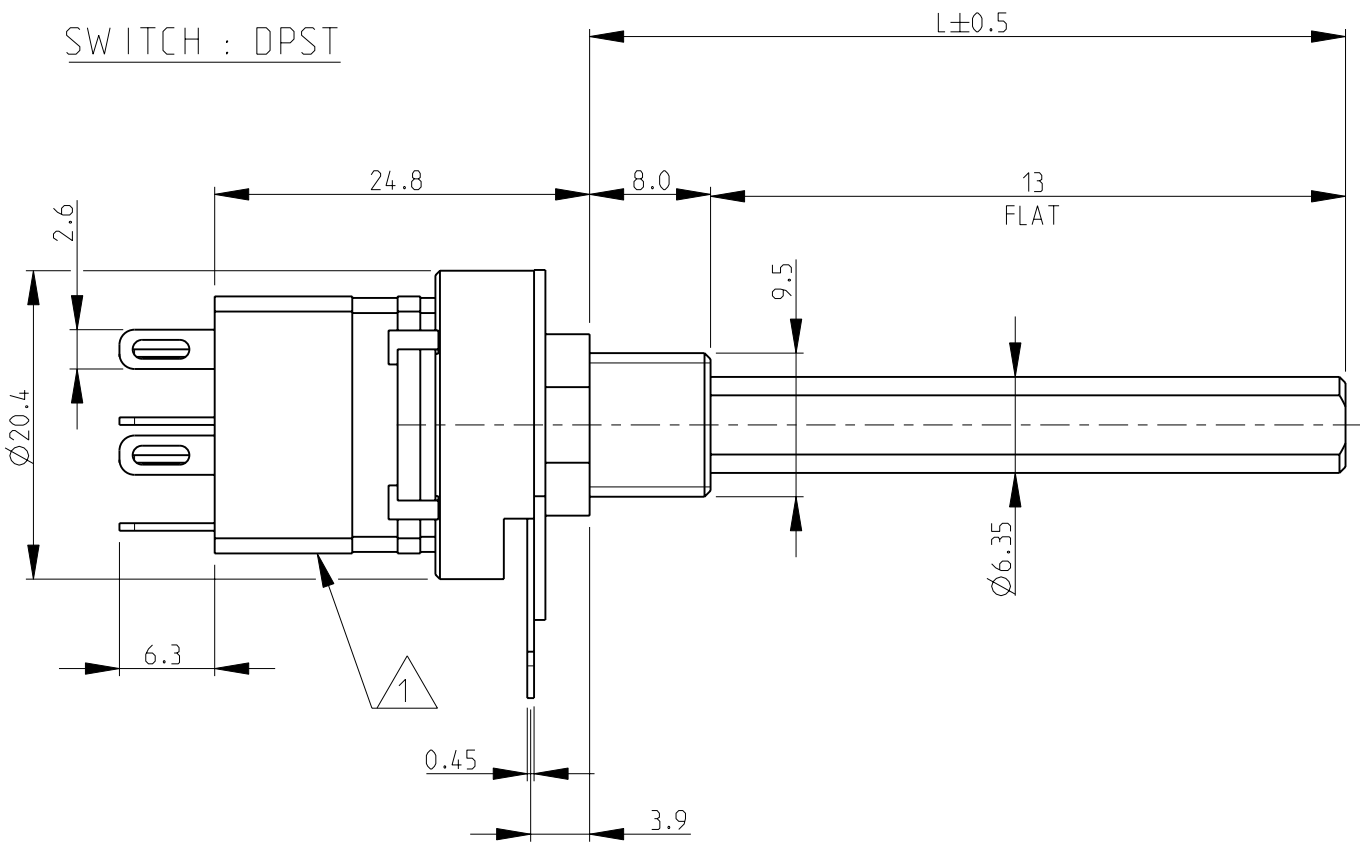
D

C

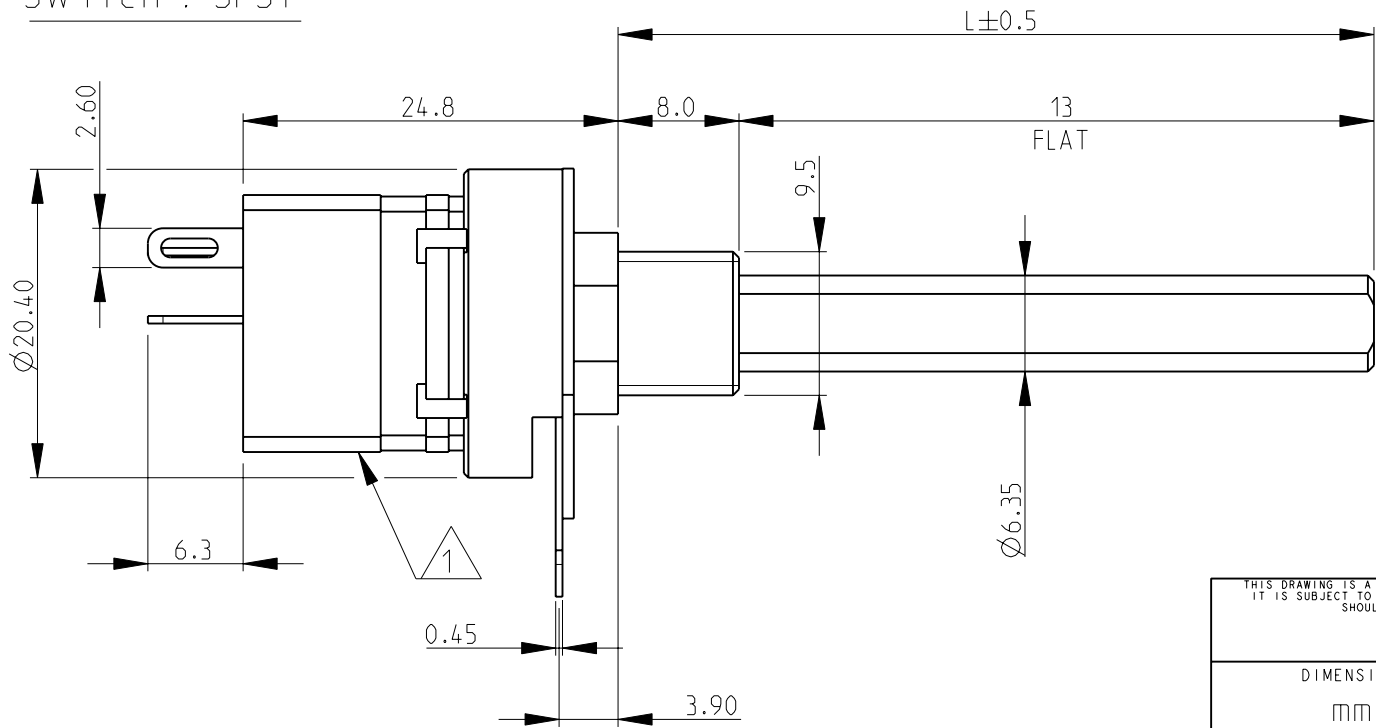
B

A

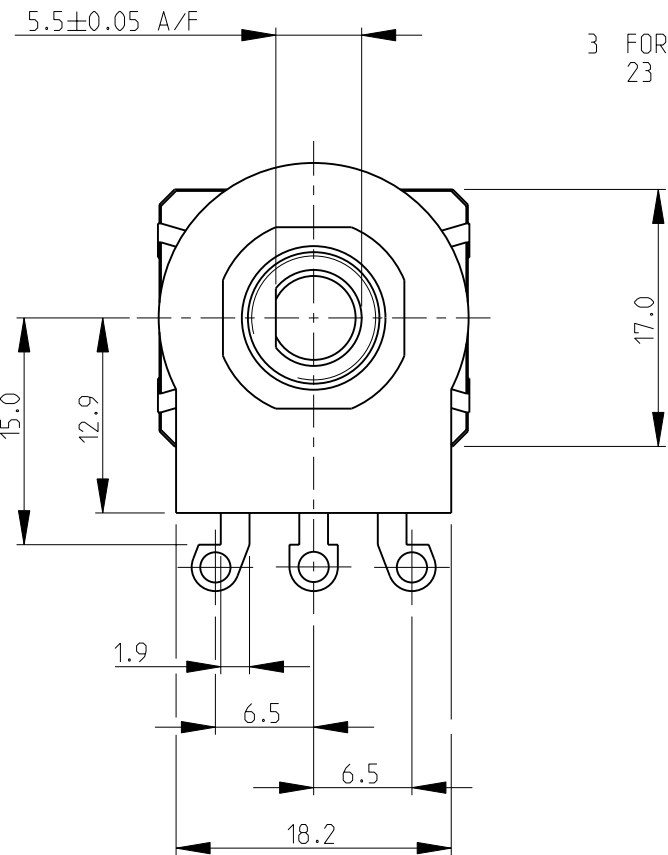
SWITCH : DPST



SWITCH : SPST

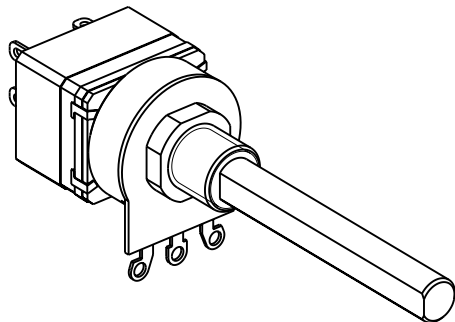


- 1 SWITCH TYPE: DPST (4A) SHOWN, TYPE SPST (4A) ALSO AVAILABLE
- 2 AVAILABLE IN DIFFERENT SHAFT LENGTHS (L) SEE DATA SHEET
- 3 FOR FURTHER INFORMATION SEE DATA SHEET FOR 23 SERIES-SPINDLE OPERATED POTENTIOMETER

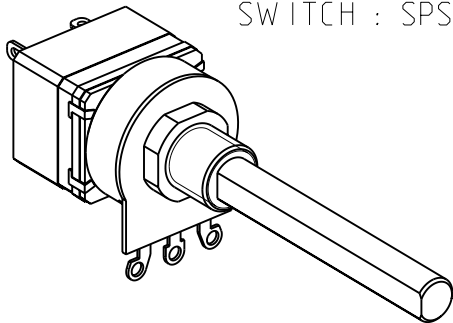



RoHS Compliant

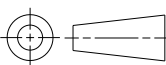
SWITCH : DPST



SWITCH : SPST



| | | | | | | |
|--|--|-----------------------|-----------|--|--|--|
| THIS DRAWING IS A CONTROLLED DOCUMENT FOR TYCO ELECTRONICS CORPORATION IT IS SUBJECT TO CHANGE AND THE CONTROLLING ENGINEERING ORGANIZATION SHOULD BE CONTACTED FOR THE LATEST REVISION. | | DWN SUBHASH.M | 30-Jul-08 |  Tyco Electronics Corporation Dorcan, Swindon, SN3 5HH | | |
| | | CHK PRAKASH.S | 30-Jul-08 | | | |
| | | APVD STEPHEN.P | 30-Jul-08 | NAME SPINDLE OPERATED POTENTIOMETER SERIES 23E | | |
| | | PRODUCT SPEC - | | | | |
| | | APPLICATION SPEC - | | SIZE A 3 | | |
| | | WEIGHT - | | | | |
| | | CUSTOMER DRAWING | | SCALE 2:1 | | |
| | | | | SHEET 1 OF 1 | | |
| | | | | REV BA | | |

| | | | |
|---|-------------|--|--|
| DIMENSIONS: mm | | TOLERANCES UNLESS OTHERWISE SPECIFIED: | |
|  | | 0 PLC ±0.5 1 PLC ±0.2 2 PLC ±0.1 3 PLC ±- 4 PLC ±- ANGLES ±5° | |
| MATERIAL - | FINISH - | | |

Mouser Electronics

Authorized Distributor

Click to View Pricing, Inventory, Delivery & Lifecycle Information:

[TE Connectivity:](#)

[23ESB103MMF50AF](#)