

4

3

2

1

LOC E	DIST B	REVISIONS					
		P	LTR	DESCRIPTION	DATE	DWN	APVD
			BA	NEW RELEASE	30-Jul-08	SM	St.P

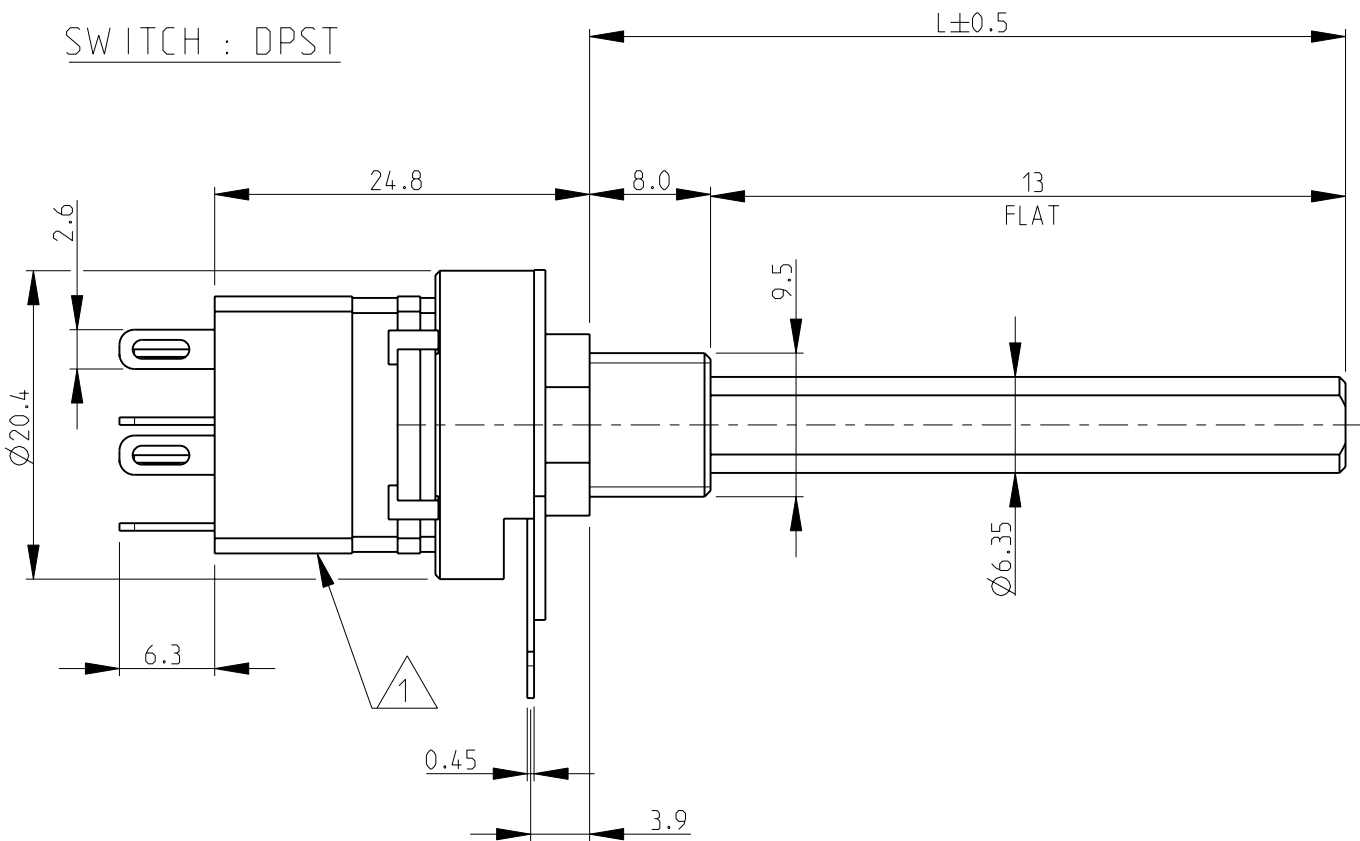
D

C

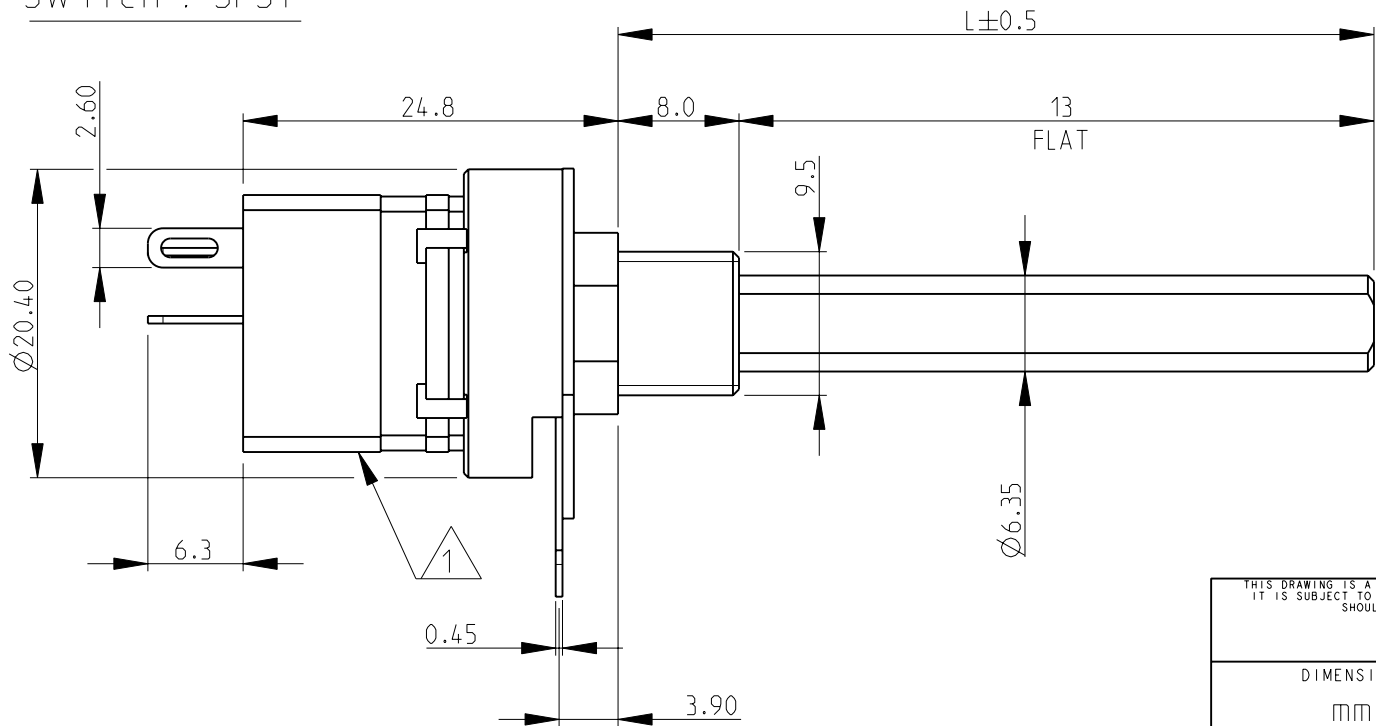
B

A

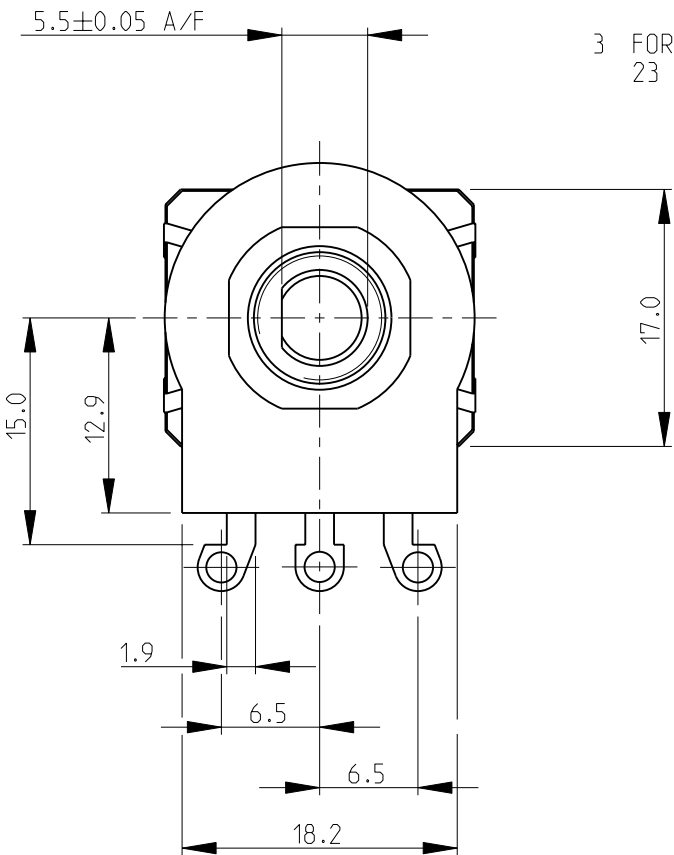
SWITCH : DPST



SWITCH : SPST

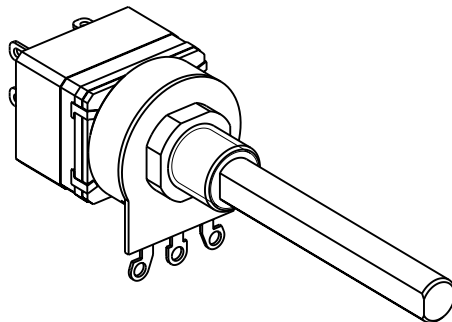


- 1 SWITCH TYPE: DPST (4A) SHOWN, TYPE SPST (4A) ALSO AVAILABLE
- 2 AVAILABLE IN DIFFERENT SHAFT LENGTHS (L) SEE DATA SHEET
- 3 FOR FURTHER INFORMATION SEE DATA SHEET FOR 23 SERIES-SPINDLE OPERATED POTENTIOMETER

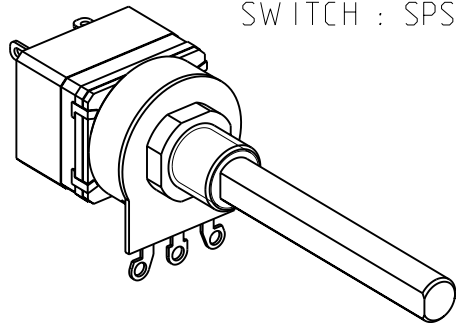



RoHS Compliant

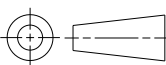
SWITCH : DPST



SWITCH : SPST



THIS DRAWING IS A CONTROLLED DOCUMENT FOR TYCO ELECTRONICS CORPORATION IT IS SUBJECT TO CHANGE AND THE CONTROLLING ENGINEERING ORGANIZATION SHOULD BE CONTACTED FOR THE LATEST REVISION.		DWN SUBHASH.M	30-Jul-08	 Tyco Electronics Corporation Dorcan, Swindon, SN3 5HH	
		CHK PRAKASH.S	30-Jul-08		
		APVD STEPHEN.P	30-Jul-08	NAME SPINDLE OPERATED POTENTIOMETER SERIES 23E	
		PRODUCT SPEC -			
		APPLICATION SPEC -		SIZE A 3	
		WEIGHT -			
		CUSTOMER DRAWING		SCALE 2:1	
				SHEET 1 OF 1	
				REV BA	

DIMENSIONS: mm		TOLERANCES UNLESS OTHERWISE SPECIFIED:	
		0 PLC ±0.5 1 PLC ±0.2 2 PLC ±0.1 3 PLC ±- 4 PLC ±- ANGLES ±5°	
MATERIAL -		FINISH -	

Mouser Electronics

Authorized Distributor

Click to View Pricing, Inventory, Delivery & Lifecycle Information:

[TE Connectivity:](#)

[23ESB103MMF50B](#)