

4

3

2

1

THIS DRAWING IS UNPUBLISHED.

RELEASED FOR PUBLICATION

2008

© COPYRIGHT 2008

BY TYCO ELECTRONICS CORPORATION. ALL RIGHTS RESERVED.

LOC

DIST

REVISIONS

P

LTR

DESCRIPTION

DATE

DWN

APVD

BA

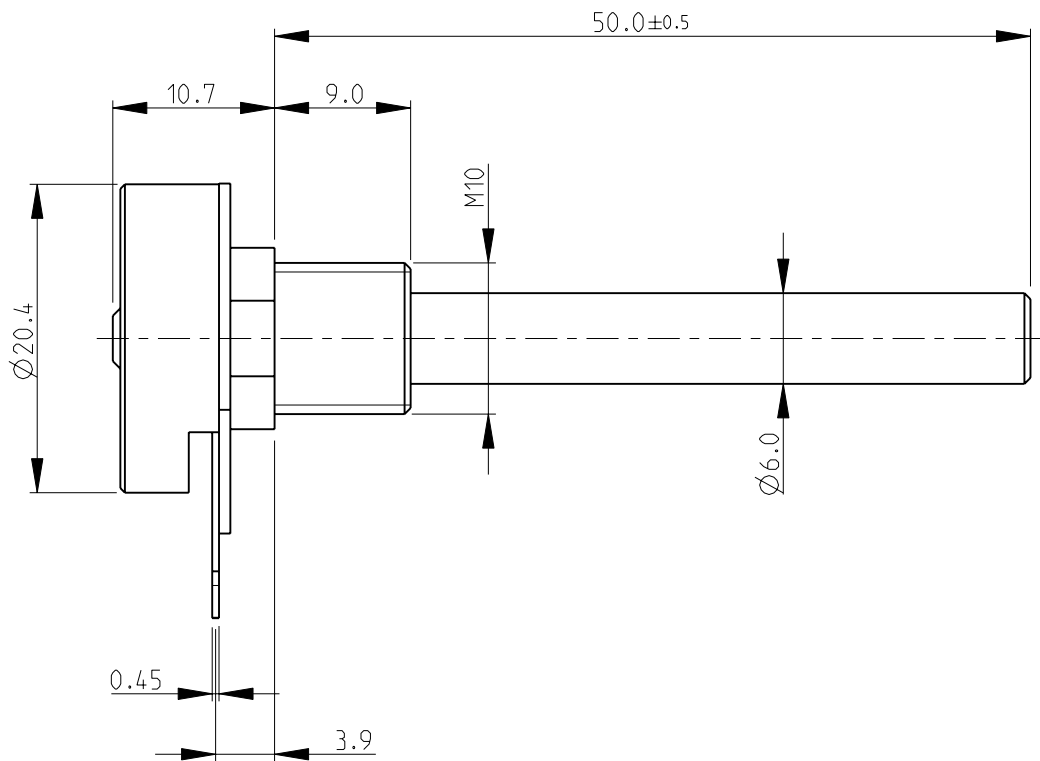
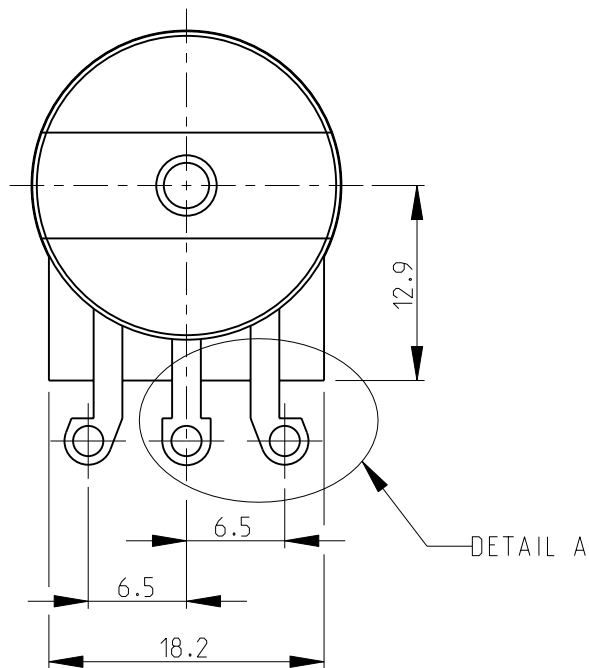
NEW RELEASE

21-NOV-08

SM

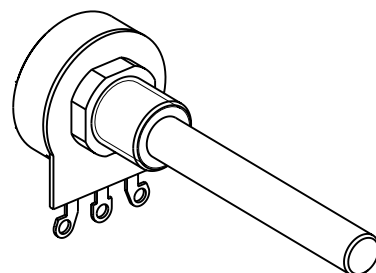
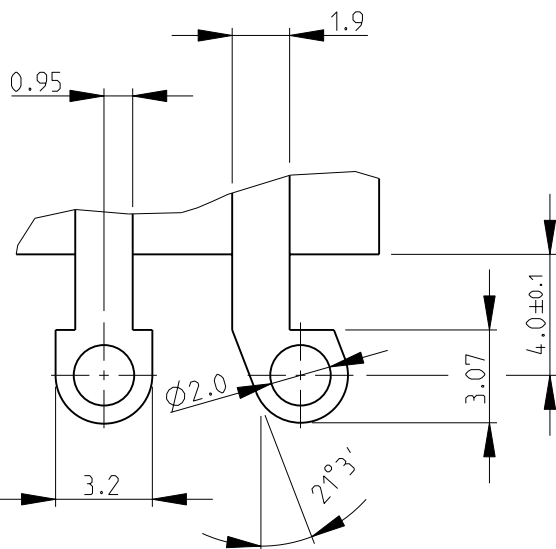
St.P

FOR FURTHER INFORMATION SEE DATA SHEET FOR
23 SERIES-SPINDLE OPERATED POTENTIOMETER



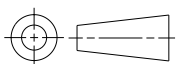
RoHS Compliant

DETAIL A
SCALE 4:1



THIS DRAWING IS A CONTROLLED DOCUMENT FOR TYCO ELECTRONICS CORPORATION
IT IS SUBJECT TO CHANGE AND THE CONTROLLING ENGINEERING ORGANIZATION
SHOULD BE CONTACTED FOR THE LATEST REVISION.

DIMENSIONS:
mm



TOLERANCES UNLESS
OTHERWISE SPECIFIED:

0 PLC ±0.2
1 PLC ±0.1
2 PLC ±-
3 PLC ±-
4 PLC ±-
ANGLES ±5°

MATERIAL

-

FINISH

-

DWN SUBHASH.M 21-NOV-08

CHK PRAKASH.S 21-NOV-08

APVD STEPHEN.P 21-NOV-08

PRODUCT SPEC

-

APPLICATION SPEC

-

WEIGHT

-

CUSTOMER DRAWING

Tyco Electronics

Tyco Electronics Corporation

Dorcan, Swindon, SN3 5HH

NAME
SPINDLE OPERATED POTENTIOMETER
SERIES 23E

SIZE

CAGE CODE

DRAWING NO

RESTRICTED TO

A3

00779

1624143

-

SCALE 2:1

SHEET 1 OF 1

REV BA

Mouser Electronics

Authorized Distributor

Click to View Pricing, Inventory, Delivery & Lifecycle Information:

[TE Connectivity:](#)

[23ESA473MLA50N](#)