

4

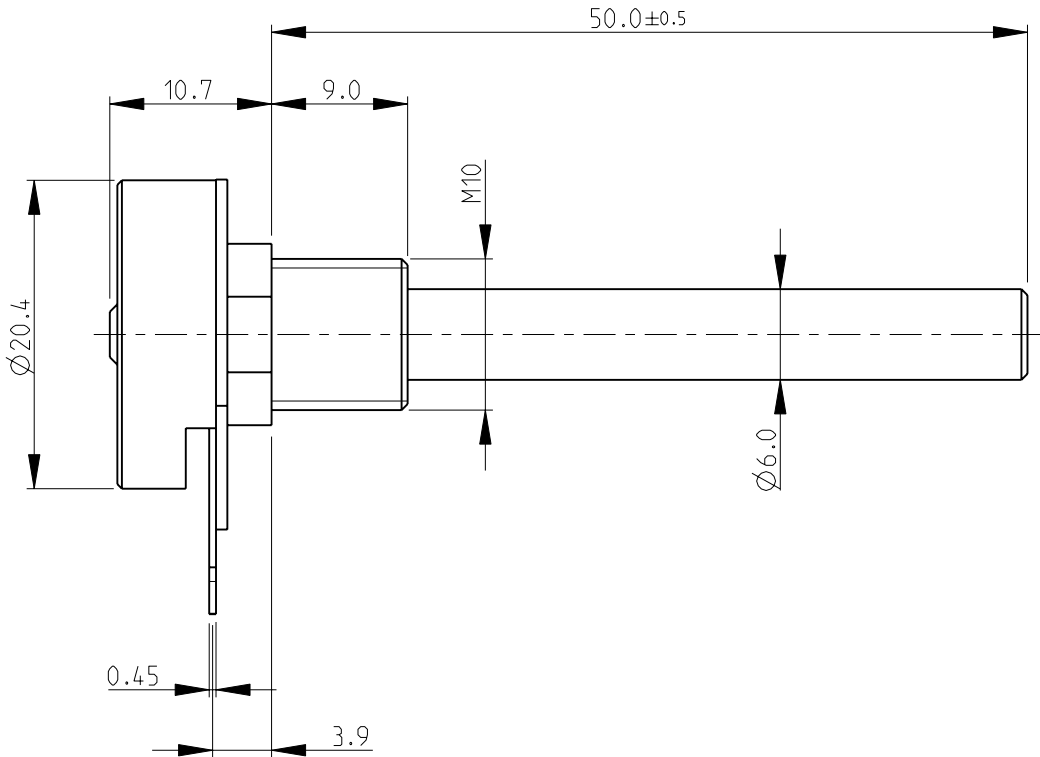
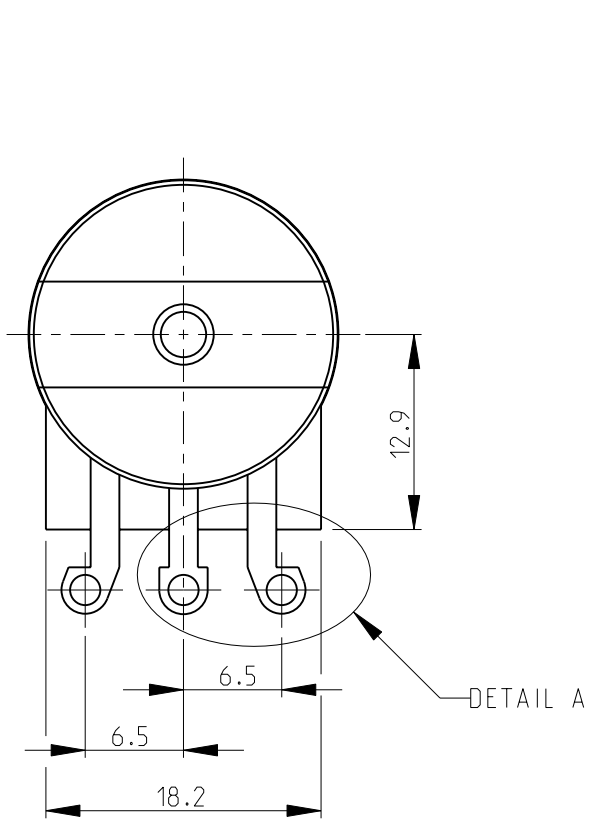
3

2

1

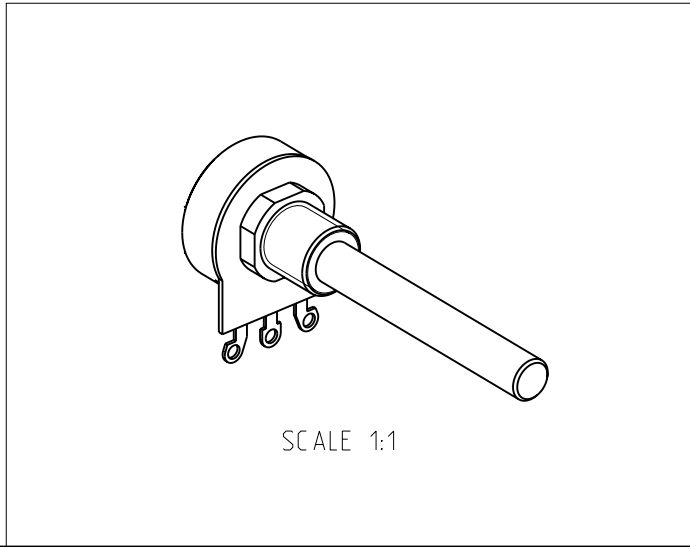
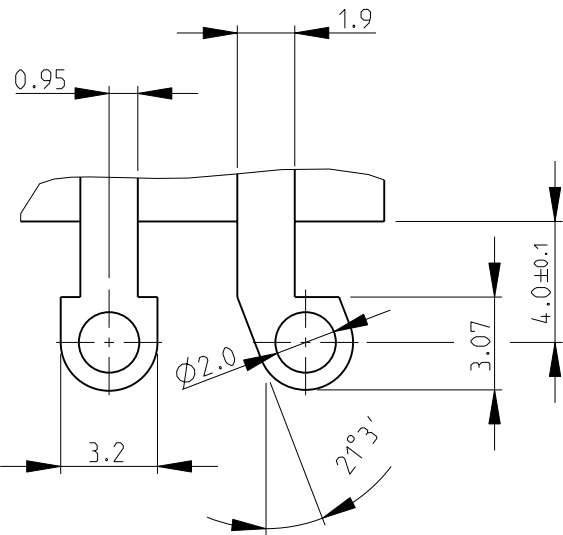
LOC E	DIST B	REVISIONS					
		P	LTR	DESCRIPTION	DATE	DWN	APVD
			BA	NEW RELEASE	19-NOV-08	SM	St.P

FOR FURTHER INFORMATION SEE DATA SHEET FOR
23 SERIES-SPINDLE OPERATED POTENTIOMETER

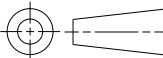



RoHS Compliant

DETAIL A
SCALE 4:1



SCALE 1:1

THIS DRAWING IS A CONTROLLED DOCUMENT FOR TYCO ELECTRONICS CORPORATION IT IS SUBJECT TO CHANGE AND THE CONTROLLING ENGINEERING ORGANIZATION SHOULD BE CONTACTED FOR THE LATEST REVISION.		DWN SUBHASH.M 19-NOV-08		<div><div><div></div></div><div>Tyco Electronics</div></div> <div>Tyco Electronics Corporation Dorcan, Swindon, SN3 5HH</div>	
DIMENSIONS: mm		CHK PRAKASH.S 19-NOV-08			
		APVD STEPHEN.P 19-NOV-08		NAME SPINDLE OPERATED POTENTIOMETER SERIES 23E	
		PRODUCT SPEC -			
		APPLICATION SPEC -		SIZE A 3	
		WEIGHT -			
MATERIAL -		FINISH -		CAGE CODE 00779	
				DRAWING NO C= 1624138	
				RESTRICTED TO -	
CUSTOMER DRAWING				SCALE 2:1	
				SHEET 1 OF 1	
				REV BA	

Mouser Electronics

Authorized Distributor

Click to View Pricing, Inventory, Delivery & Lifecycle Information:

[TE Connectivity:](#)

[23ESA472MLA50N](#)