

4

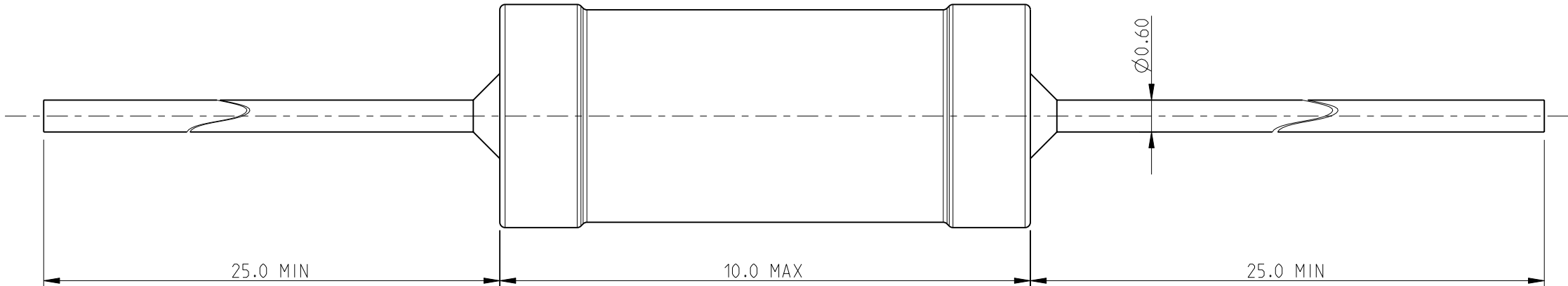
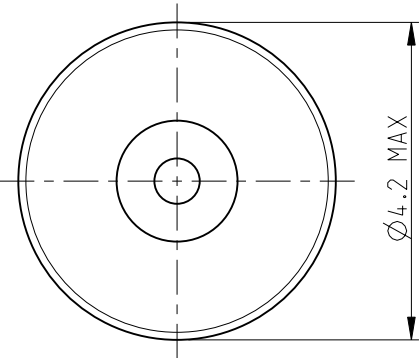
3

2

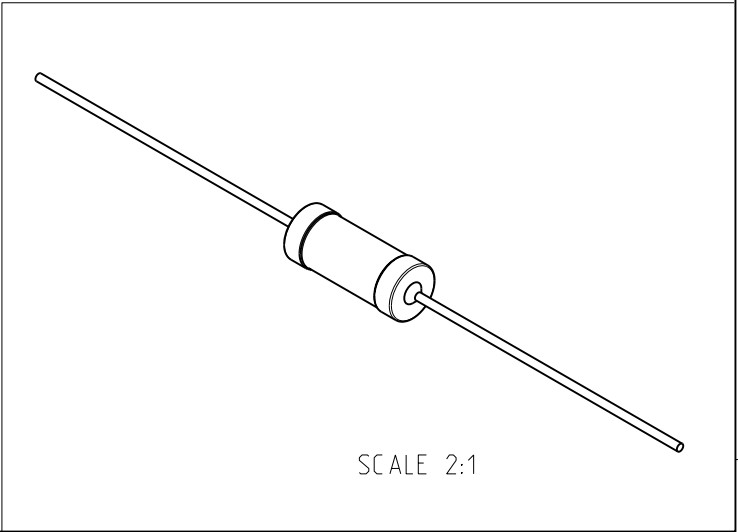
1

LOC E	DIST B	REVISIONS					
		P	LTR	DESCRIPTION	DATE	DWN	APVD
			BA	NEW RELEASE	04-MAR-10	MRS	St.P


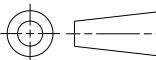
FOR FURTHER INFORMATION SEE DATA SHEET FOR
SERIES SC - AXIAL LEADED POWER INDUCTORS



RoHS Compliant



SCALE 2:1

THIS DRAWING IS A CONTROLLED DOCUMENT FOR TYCO ELECTRONICS CORPORATION IT IS SUBJECT TO CHANGE AND THE CONTROLLING ENGINEERING ORGANIZATION SHOULD BE CONTACTED FOR THE LATEST REVISION.		DWN MAHARUDRA 04-MAR-10		 Tyco Electronics Corporation Dorcan, Swindon, SN3 5HH					
		CHK ALLAN.P 04-MAR-10							
		APVD STEPHEN.P 04-MAR-10		NAME AXIAL LEADED POWER INDUCTORS SERIES SC10					
		PRODUCT SPEC -							
		APPLICATION SPEC -		SIZE		CAGE CODE	DRAWING NO	RESTRICTED TO	
		WEIGHT -		A3		00779	C-1623976	-	
		CUSTOMER DRAWING				SCALE 10:1		SHEET 1 OF 1	REV BA
DIMENSIONS: mm		TOLERANCES UNLESS OTHERWISE SPECIFIED:							
		0 PLC ±0.2 1 PLC ±0.1 2 PLC ± 3 PLC ± 4 PLC ± ANGLES ±5°							
MATERIAL -		FINISH -							

Mouser Electronics

Authorized Distributor

Click to View Pricing, Inventory, Delivery & Lifecycle Information:

[TE Connectivity:](#)

[SC10R68KT](#)