

4

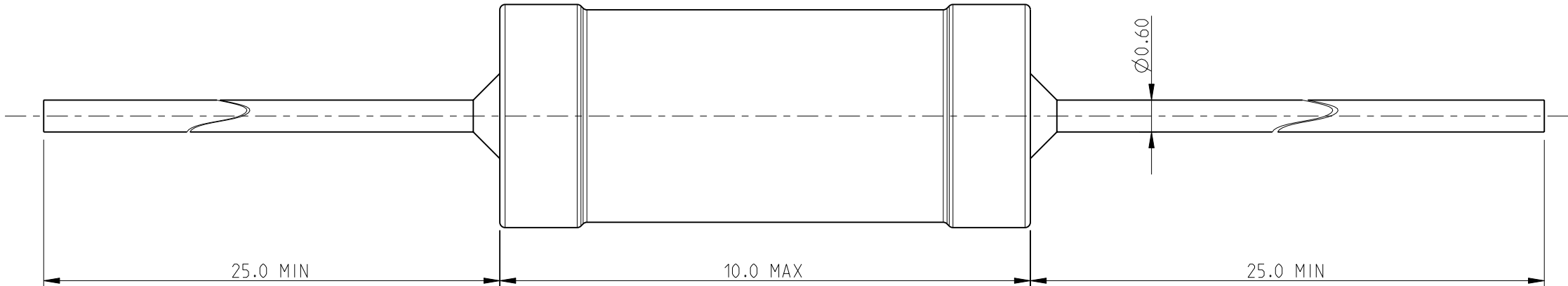
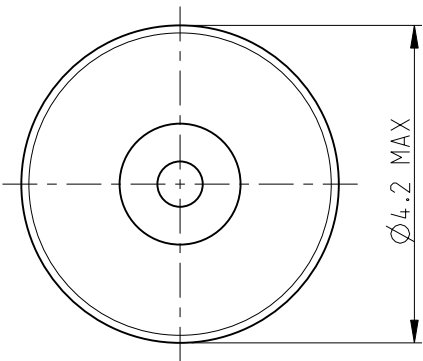
3

2

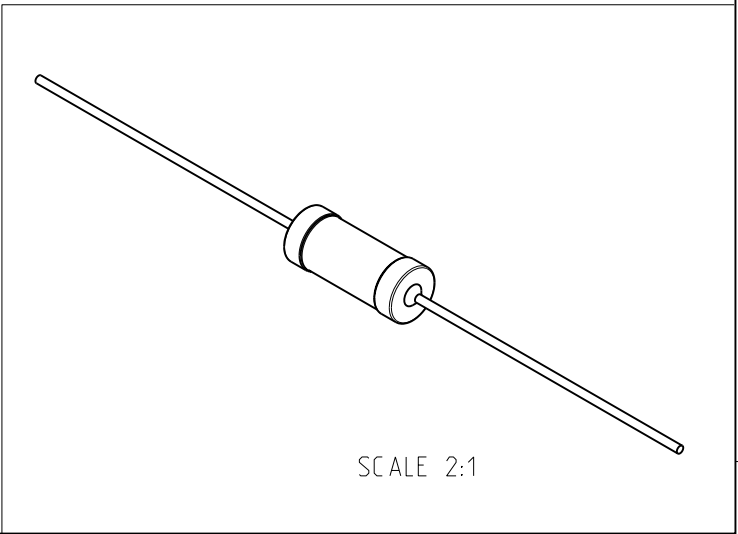
1


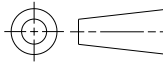
LOC	DIST	REVISIONS					
		P	LTR	DESCRIPTION	DATE	DWN	APVD
E	B		BA	NEW RELEASE	04-MAR-10	MRS	St.P

FOR FURTHER INFORMATION SEE DATA SHEET FOR  
SERIES SC - AXIAL LEADED POWER INDUCTORS



RoHS Compliant



THIS DRAWING IS A CONTROLLED DOCUMENT FOR TYCO ELECTRONICS CORPORATION IT IS SUBJECT TO CHANGE AND THE CONTROLLING ENGINEERING ORGANIZATION SHOULD BE CONTACTED FOR THE LATEST REVISION.		DWN MAHARUDRA 04-MAR-10		 Tyco Electronics Corporation Dorcan, Swindon, SN3 5HH											
		CHK ALLAN.P 04-MAR-10													
DIMENSIONS:  mm		TOLERANCES UNLESS OTHERWISE SPECIFIED:		APVD STEPHEN.P 04-MAR-10		NAME  AXIAL LEADED POWER INDUCTORS SERIES SC10									
				PRODUCT SPEC  -											
		0 PLC ±0.2 1 PLC ±0.1 2 PLC ± 3 PLC ± 4 PLC ± ANGLES ±5°		APPLICATION SPEC  -		SIZE A3		CAGE CODE 00779		DRAWING NO C-1623963		RESTRICTED TO  -			
				WEIGHT -											
MATERIAL -		FINISH -		CUSTOMER DRAWING						SCALE 10:1		SHEET 1 OF 1		REV BA	

# Mouser Electronics

Authorized Distributor

Click to View Pricing, Inventory, Delivery & Lifecycle Information:

[TE Connectivity:](#)

[SC10681KT](#)