

4

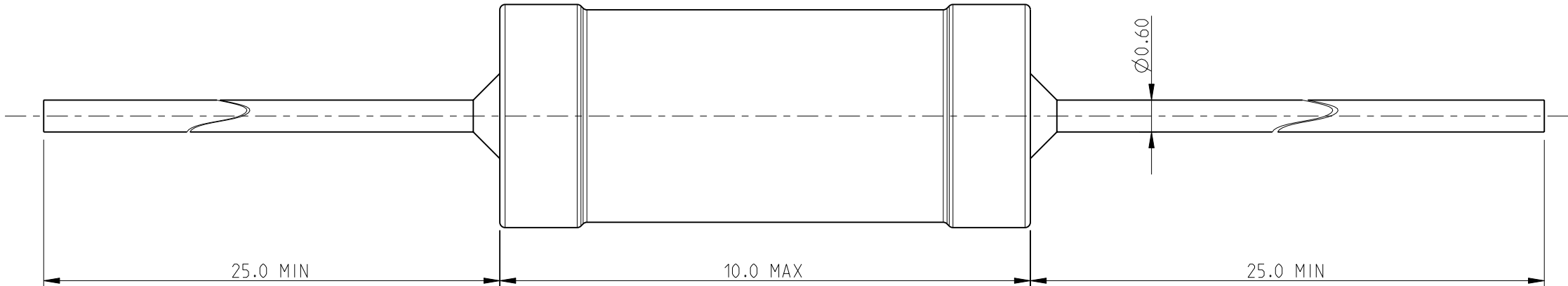
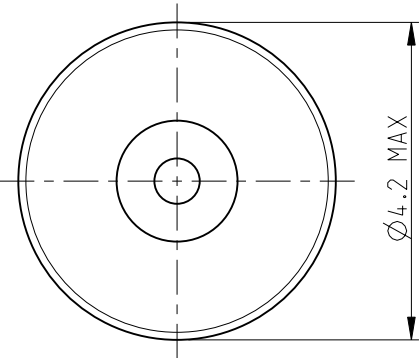
3

2

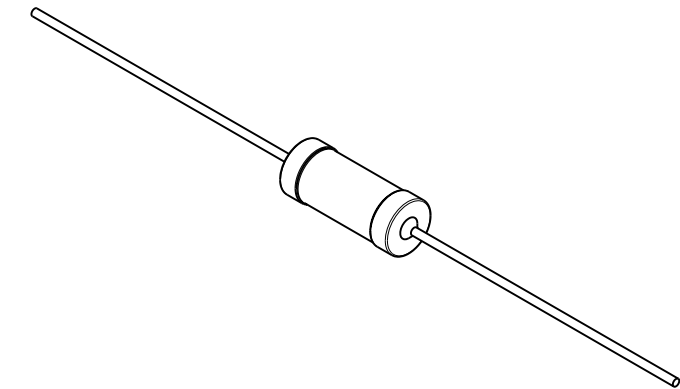
1

LOC	DIST	REVISIONS					
		P	LTR	DESCRIPTION	DATE	DWN	APVD
E	B		BA	NEW RELEASE	04-MAR-10	MRS	St.P


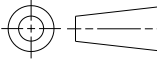
FOR FURTHER INFORMATION SEE DATA SHEET FOR  
SERIES SC - AXIAL LEADED POWER INDUCTORS



RoHS Compliant



SCALE 2:1

THIS DRAWING IS A CONTROLLED DOCUMENT FOR TYCO ELECTRONICS CORPORATION IT IS SUBJECT TO CHANGE AND THE CONTROLLING ENGINEERING ORGANIZATION SHOULD BE CONTACTED FOR THE LATEST REVISION.		DWN MAHARUDRA 04-MAR-10		 Tyco Electronics Corporation Dorcan, Swindon, SN3 5HH					
		CHK ALLAN.P 04-MAR-10							
DIMENSIONS: mm		TOLERANCES UNLESS OTHERWISE SPECIFIED:		APVD STEPHEN.P 04-MAR-10		NAME AXIAL LEADED POWER INDUCTORS SERIES SC10			
		0 PLC ±0.2		PRODUCT SPEC					
		1 PLC ±0.1		-					
		2 PLC ±-		APPLICATION SPEC					
		3 PLC ±-		-		SIZE A 3			
		4 PLC ±-		WEIGHT					
		ANGLES ±5°		-		DRAWING NO C-1623959			
MATERIAL -		FINISH -		-					
				CUSTOMER DRAWING		SCALE 10:1			
						REV BA			

# Mouser Electronics

Authorized Distributor

Click to View Pricing, Inventory, Delivery & Lifecycle Information:

[TE Connectivity:](#)

[SC104R7KT](#)