

4

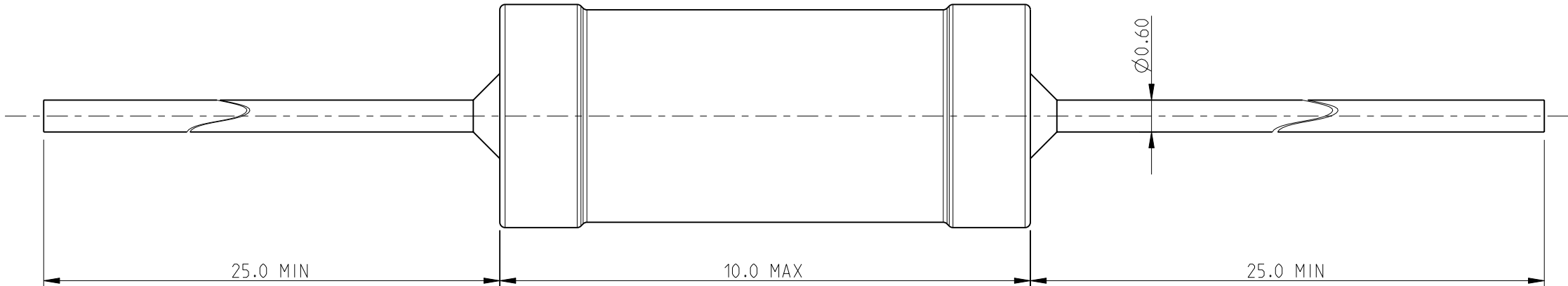
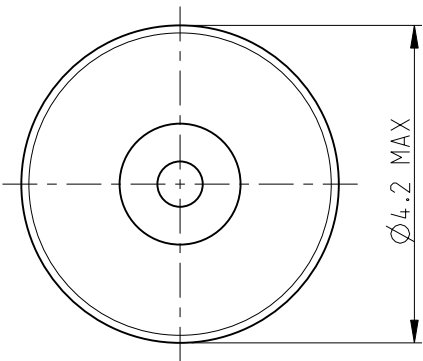
3

2

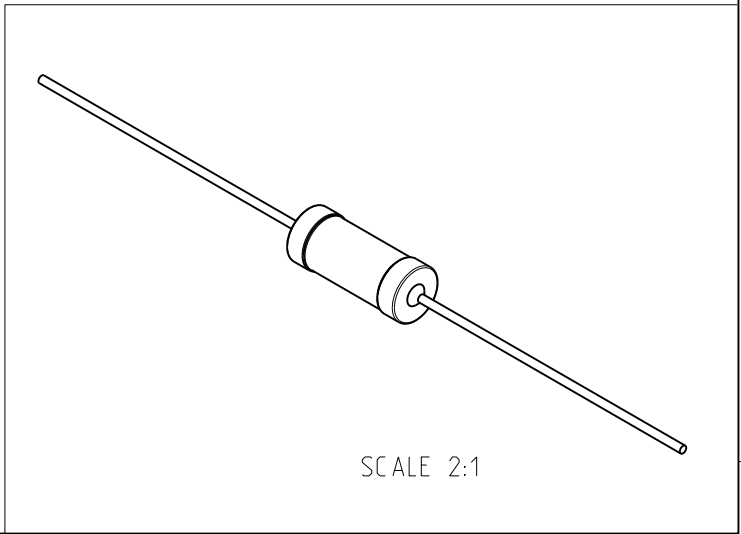
1

LOC	DIST	REVISIONS					
		P	LTR	DESCRIPTION	DATE	DWN	APVD
E	B		BA	NEW RELEASE	04-MAR-10	MRS	St.P

FOR FURTHER INFORMATION SEE DATA SHEET FOR
SERIES SC - AXIAL LEADED POWER INDUCTORS



RoHS Compliant



SCALE 2:1

THIS DRAWING IS A CONTROLLED DOCUMENT FOR TYCO ELECTRONICS CORPORATION IT IS SUBJECT TO CHANGE AND THE CONTROLLING ENGINEERING ORGANIZATION SHOULD BE CONTACTED FOR THE LATEST REVISION.		DWN MAHARUDRA 04-MAR-10	<div><div><div></div></div><div>Tyco Electronics</div></div> <div>Tyco Electronics Corporation Dorcan, Swindon, SN3 5HH</div>			
DIMENSIONS: mm		CHK ALLAN.P 04-MAR-10				
		APVD STEPHEN.P 04-MAR-10	NAME AXIAL LEADED POWER INDUCTORS SERIES SC10			
		PRODUCT SPEC -				
TOLERANCES UNLESS OTHERWISE SPECIFIED:		APPLICATION SPEC -	SIZE A3			
0 PLC ±0.2 1 PLC ±0.1 2 PLC ±- 3 PLC ±- 4 PLC ±- ANGLES ±5°		WEIGHT -				
MATERIAL -		FINISH -	CAGE CODE 00779		DRAWING NO C-1623958	
		CUSTOMER DRAWING		SCALE 10:1	SHEET 1 OF 1	REV BA

Mouser Electronics

Authorized Distributor

Click to View Pricing, Inventory, Delivery & Lifecycle Information:

[TE Connectivity:](#)

[SC10471KT](#)