

4

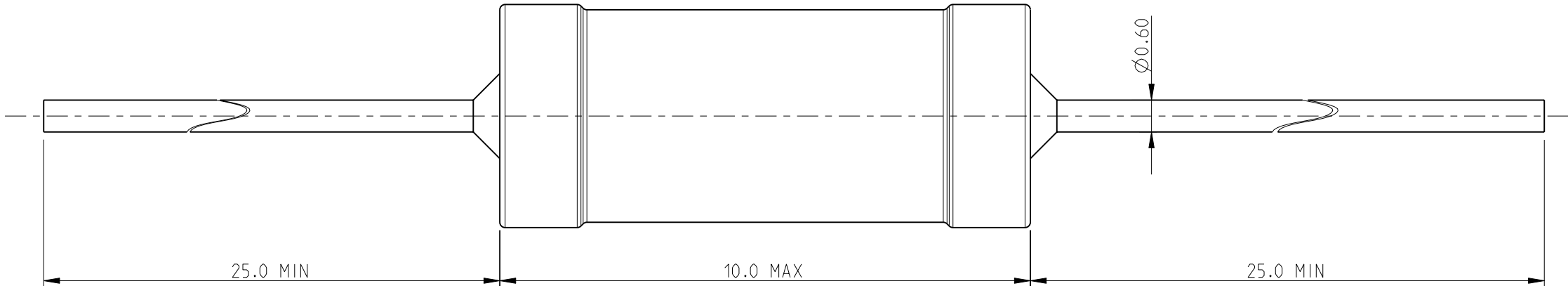
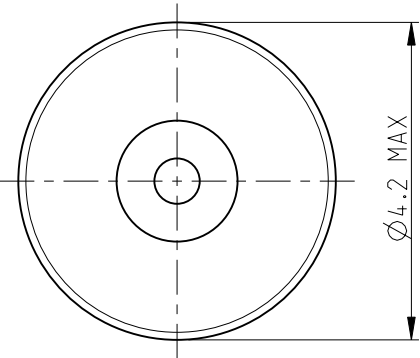
3

2

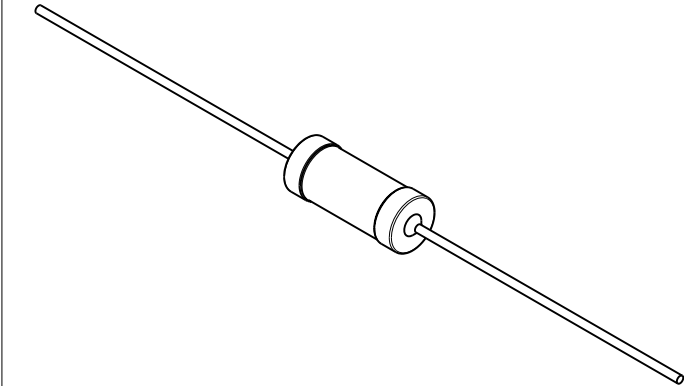
1

LOC	DIST	REVISIONS					
		P	LTR	DESCRIPTION	DATE	DWN	APVD
E	B		BA	NEW RELEASE	04-MAR-10	MRS	St.P


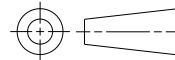
FOR FURTHER INFORMATION SEE DATA SHEET FOR
SERIES SC - AXIAL LEADED POWER INDUCTORS



RoHS Compliant



SCALE 2:1

THIS DRAWING IS A CONTROLLED DOCUMENT FOR TYCO ELECTRONICS CORPORATION IT IS SUBJECT TO CHANGE AND THE CONTROLLING ENGINEERING ORGANIZATION SHOULD BE CONTACTED FOR THE LATEST REVISION.		DWN MAHARUDRA 04-MAR-10		 Tyco Electronics Corporation Dorcan, Swindon, SN3 5HH							
DIMENSIONS: mm		CHK ALLAN.P 04-MAR-10									
		APVD STEPHEN.P 04-MAR-10		NAME AXIAL LEADED POWER INDUCTORS SERIES SC10							
		PRODUCT SPEC -									
		APPLICATION SPEC -									
		WEIGHT -									
TOLERANCES UNLESS OTHERWISE SPECIFIED:		0 PLC ±0.2 1 PLC ±0.1 2 PLC ±- 3 PLC ±- 4 PLC ±- ANGLES ±5°		SIZE A3		CAGE CODE 00779		DRAWING NO C-1623947		RESTRICTED TO -	
MATERIAL -		FINISH -		CUSTOMER DRAWING							
				SCALE 10:1		SHEET 1		OF 1		REV BA	

Mouser Electronics

Authorized Distributor

Click to View Pricing, Inventory, Delivery & Lifecycle Information:

[TE Connectivity:](#)

[SC10220KT](#)