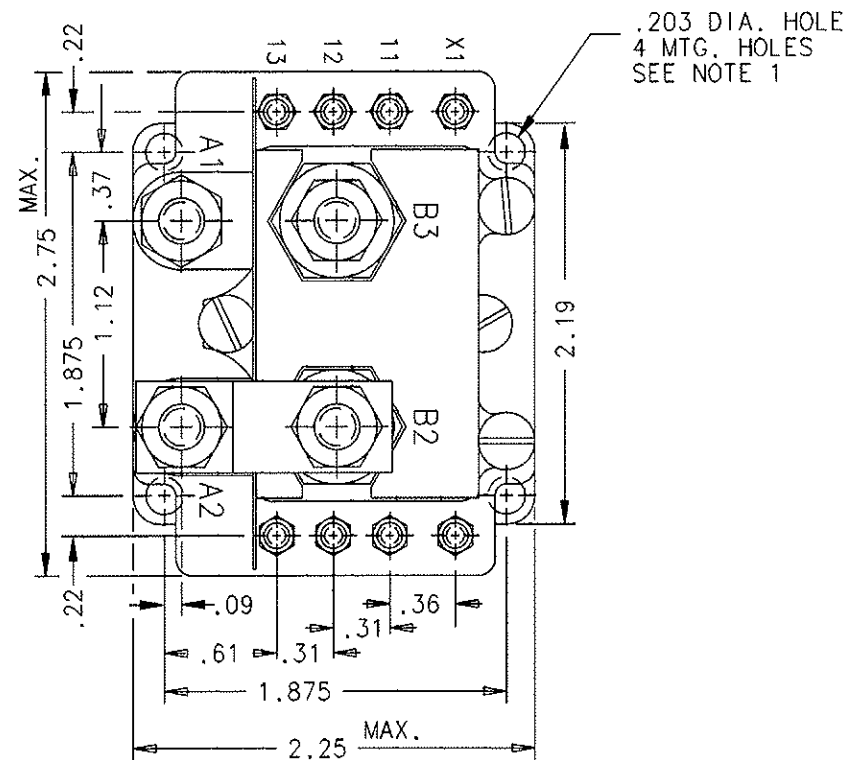


FAA/PMA

REVISIONS			RELEASED	
SYN	DESCRIPTION	DATE	APPROVED	
S 21709	REDRAWN, ADDED "SILASTIC SEALED" TO CONSTRUCTION	92/01/10	RM	
T 32527	FIND NOS 13 & 14 ADDED	97/03/31	RS	
U 34615	FIND NO 14 WAS 39529-014	97/12/18	RS	
V 40524	8 STUDS WAS 5 ON 6-32 UNC-2A	99/08/31	RS	
W 41679	VIEWS UPDATED TO SHOW LUG NUTS	00/02/07	RS	
Y 42113	NOTE 1 ADDED	00/03/31	RS	
AA 0471-04	REMOVED ITEM 13, ITEM 5 WAS 41695-001	04/06/01	CJ	



CONSTRUCTION  
MAIN CONTACTS  
CONFIGURATION  
VOLTAGE (NOM.)  
CURRENT RES.  
INRUSH

GASKET SEALED, SILASTIC SEALED

SPDT  
28 VDC  
230 AMP  
600 AMP CARRY ONLY

AUXILIARY CONTACTS  
CONFIGURATION  
VOLTAGE  
CURRENT RES.  
IND.

D.P.D.T.  
28 VDC.  
5 AMP  
3 AMP

COIL DATA  
MAX OPERATE  
MIN OPERATE  
PICKUP AT 25°C  
DROPOUT  
RES AT 25°C  
DUTY CYCLE

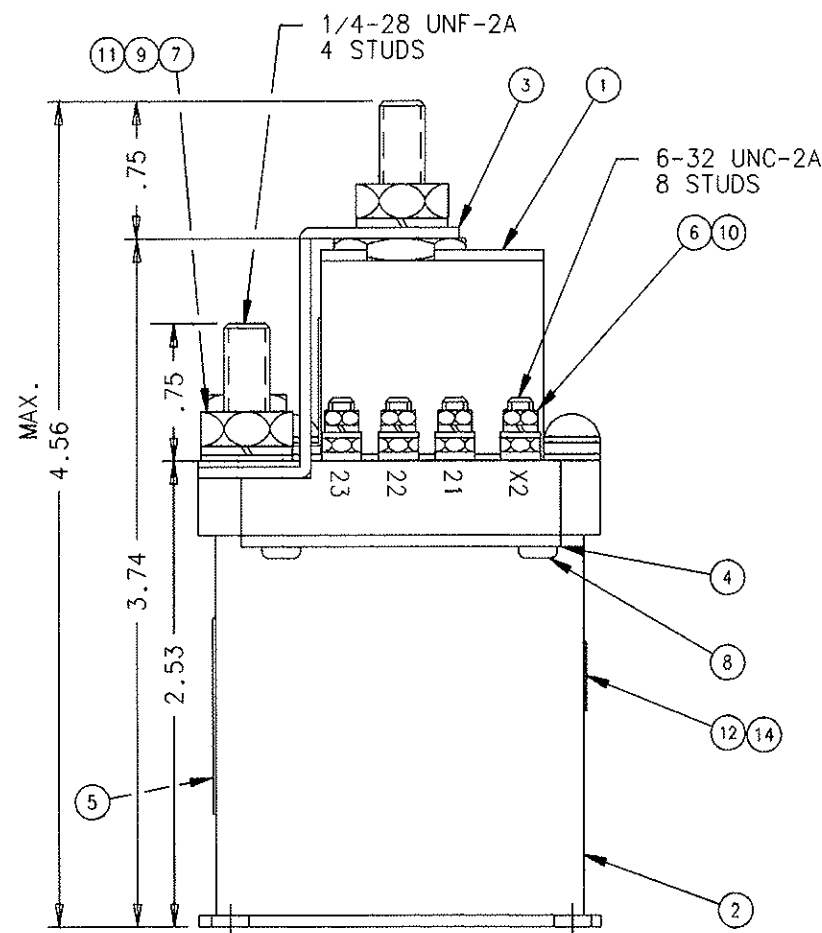
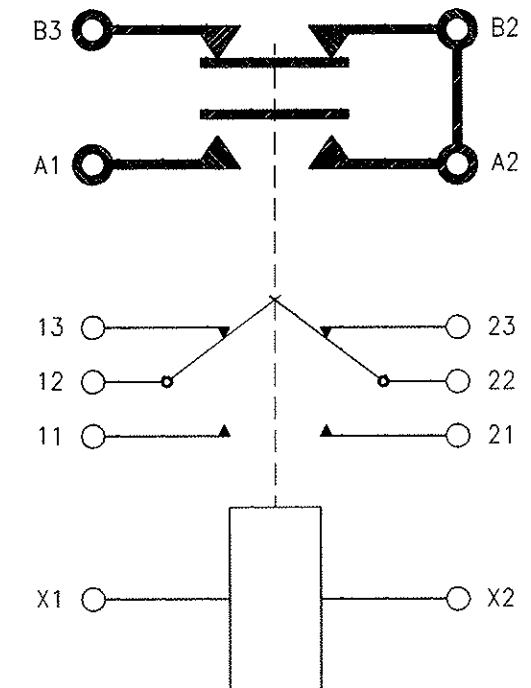
30 VDC  
24 VDC  
16.5 V. MAX.  
0.5 TO 7 V  
50 OHM ±20%  
CONTINUOUS

ENVIRONMENTAL DATA  
AMBIENT TEMP  
LIFE ELECTRICAL  
LIFE MECHANICAL  
WEIGHT MAX

-55°C TO + 71°C  
50,000 CYCLES MIN  
100,000 CYCLES MIN  
1 LB 15 OZ.

## NOTE:

1. PAINT REMOVED FROM 2 OPPOSITE MTG HOLES, TOP & BOTTOM, FOR GROUNDING PURPOSES.



14	1	39529-024	OVERLAY - FAA/PMA			
12	1	58400-064	PLATE - FAA/PMA			
11	4	51807-034	WASHER LOCK, NO. 1/4 SPLIT			BRONZE
10	8	51806-014	WASHER LOCK, NO. 6 SPLIT			BRONZE
9	4	51703-064	WASHER 1/2 X 17/64 X .032 FLAT			BRASS
8	4	51200-020	SCREW #4 X 1/4 PAN HD, SHEET METAL			S. STEEL
7	4	50407-364	NUT 1/4-28 X 7/16 X 3/16 HEX			BRASS
6	8	50406-014	NUT 6-32 X 3/16 X 5/64 HEX			BRASS
5	1	47618-001	PLATE - NAME			
4	2	34290-001	PLATE - COVER			
3	1	33896-001	BUS BAR			
2	1	33502-030	CONTACTOR ASSEMBLY - PRIMARY			
1	1	33344-001	PLATE - COVER			
FIND NO	QTY REQD	PART OR IDENTIFYING NO	NOMENCLATURE OR DESCRIPTION	FSCM NO	DRAWING OR SPECIFICATION	MATERIAL OR NOTE
			REF: SIKORSKY 76550-00902-101	<b>tyco Electronics</b> Hartman Division 175 N. DIAMOND STREET WANSFIELD, OHIO 44902		
			DR BY: RLS 00/05/16	<b>CONTACTOR - S.P.D.T.</b> 230 AMP, 28 VDC 093		
			CHK BY: RS 00/05/16			
			ENGR: JL 00/05/17			
			MFG: CC 00/05/18			
			SIZE: C 74063	DWG NO. A-1077B REF TYCO P/N 0-1616081-1		
2 PL DEC, 3 PL DEC, ANGLES			SCALE: NONE	SHEET		
± .06			± .010			± 1°

# Mouser Electronics

Authorized Distributor

Click to View Pricing, Inventory, Delivery & Lifecycle Information:

[TE Connectivity:](#)

[A1077B](#)