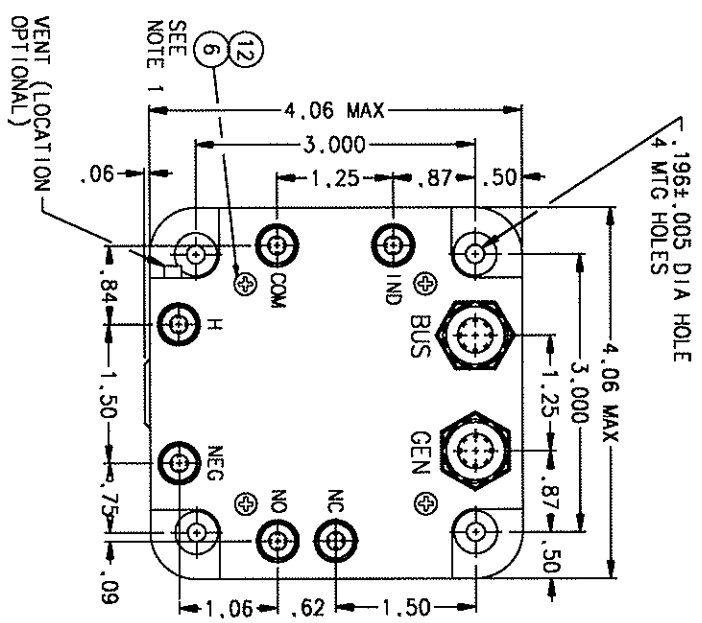


A-703			REV.
REV.	DESCRIPTION	DATE	APPROVED
1	31853 REDRAWN, FIND NO 11 ADDED	97/01/14	RS
2	44317 ADDED ITEM 12: UPDATED NOTE	01/03/14	



CONSTRUCTION  
MAIN CONTACTS  
CONFIGURATION  
VOLTAGE (NOMINAL)  
CURRENT

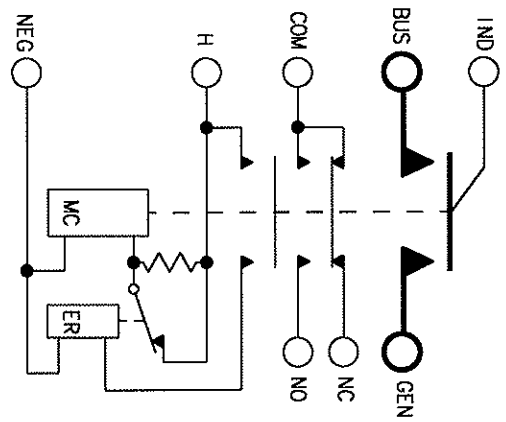
AUXILIARY CONTACTS  
CONFIGURATION  
VOLTAGE  
CURRENT

COIL DATA  
VOLTAGE  
PICKUP  
PULL THROUGH  
ECONOMIZING  
DROPOUT  
RESISTANCE AT 25°C  
PICKUP  
HOLDING  
PEAK INRUSH  
DUTY  
AMBIENT TEMP.  
LIFE ELECTRICAL  
WEIGHT MAX.

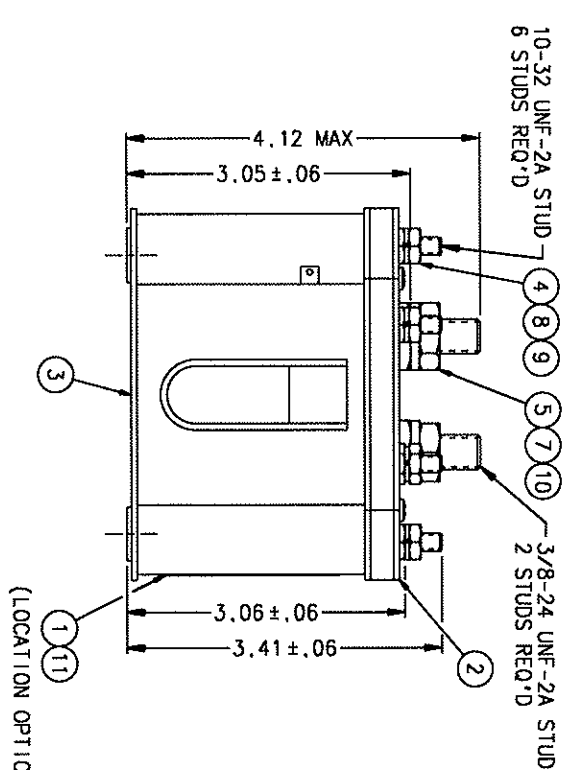
GASKET SEALED (VENTED)

SPST N.O.  
28 VDC  
400 AMP  
1000 AMP FOR 30 SEC  
1500 AMP INRUSH

24 TO 30 VDC  
12 VOLTS MAX  
6 VOLTS MAX AT 25°C  
12-15 VOLTS  
0.5 - 7 V.  
±20%  
14 OHM ±20%  
64 OHM ±20%  
3 AMP MAX  
CONTINUOUS (ECONOMIZING)  
-55°C TO +71°C  
50,000 CYCLES MIN.  
2 LBS. 11 OZ.



NOTES:  
1. GLYP TOL 1 SCREW PER PP-11022.



12	AR	54102-001	GLYP TOL			
11	1	39529-001	OVERLAY - NAME PLATE			
10	2	51704-024	WASHER 5/8 X 25/64 X .062 FLAT			BRASS
9	6	51702-844	WASHER 3/8 X 13/64 X .032 FLAT			BRASS
8	6	51810-054	WASHER-LOCK NO. 10 X .337 X .047 SPLIT			BRONZE
7	2	51807-084	WASHER-LOCK 3/8 X .688 X .094 SPLIT			BRONZE
6	4	51200-020	SCREW-NO. 4 X 1/4 SHEETMETAL			S. STEEL
5	2	50407-164	NUT-3/8-24 X 5/8 X 7/32 HEX.			BRASS
4	6	50410-084	NUT-10-32 X 3/8 X 1/8 HEX.			BRASS
3	1	32354-010	RELAY ASSEMBLY - PRIMARY			
2	1	32060-002	PLATE-BASE COVER			
1	1	16043-001	PLATE - NAME			

QTY	PART OR IDENTIFYING NO	NOMENCLATURE OR DESCRIPTION	FSCM NO	DRAWING OR SPECIFICATION	MATERIAL OR NOTE
1	1	16043-001			

UNLESS OTHERWISE SPECIFIED DIMENSIONS ARE IN INCHES TOLERANCES ON			HARTMAN® MANSFIELD, OHIO		
2 PL DEC. 13 PL DEC. JANGLES	DR BY	CSC	01/03/27	KLC/KSR	
±.06	±.010	±.1*		400 AMP, 28 VDC	
	CHK BY	CC	01/03/28	SIZE	
	ENGR	TI	01/03/28	CODE IDENT	DWG NO.
	MFG	NH	01/03/28	C	74063
	RELEASE			A-703	
	CONTR NO.			SCALE	
	GOVT APPVL			SHEET	

093
-----

# Mouser Electronics

Authorized Distributor

Click to View Pricing, Inventory, Delivery & Lifecycle Information:

[TE Connectivity:](#)

[A703](#)