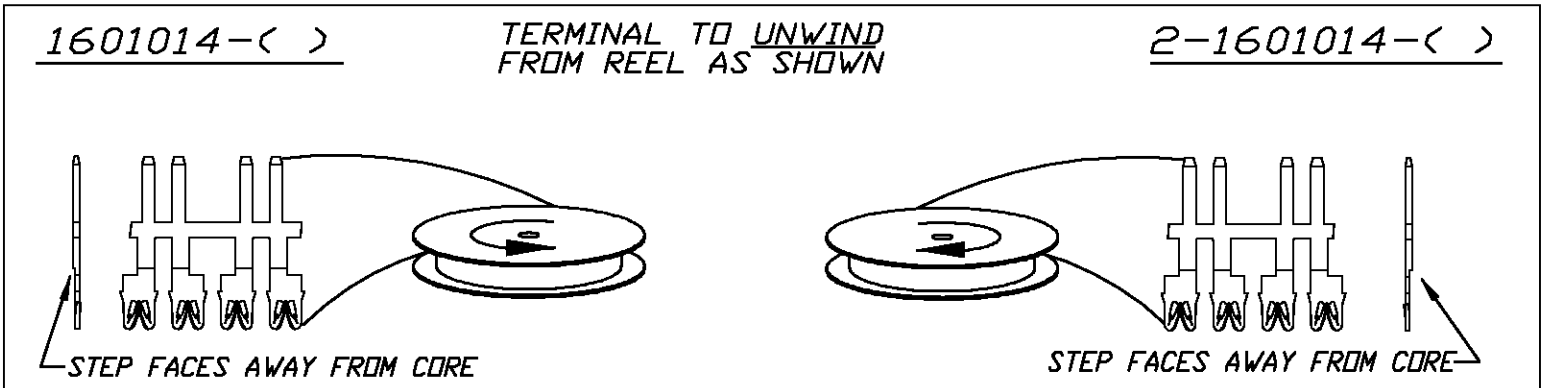
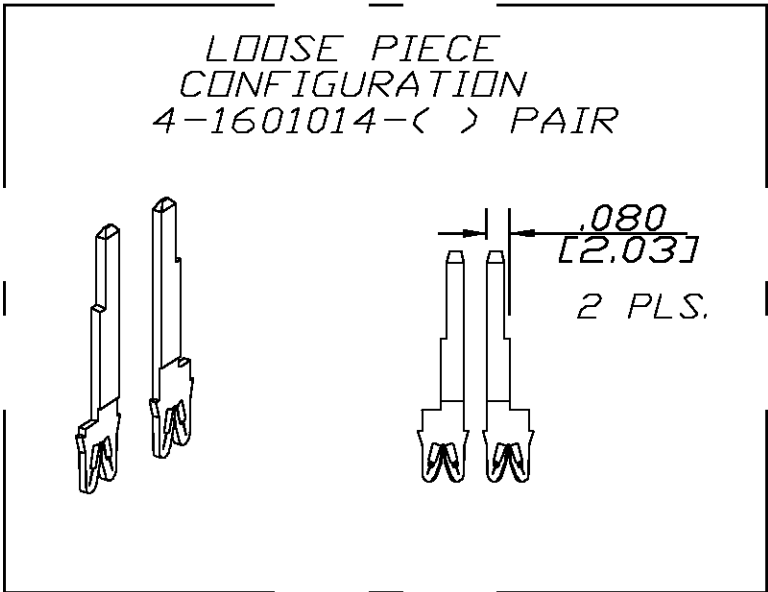
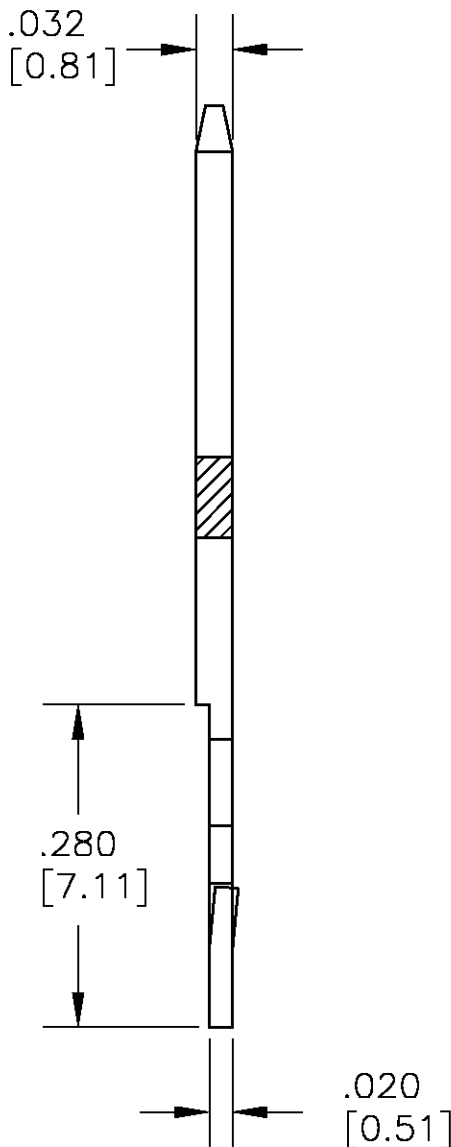
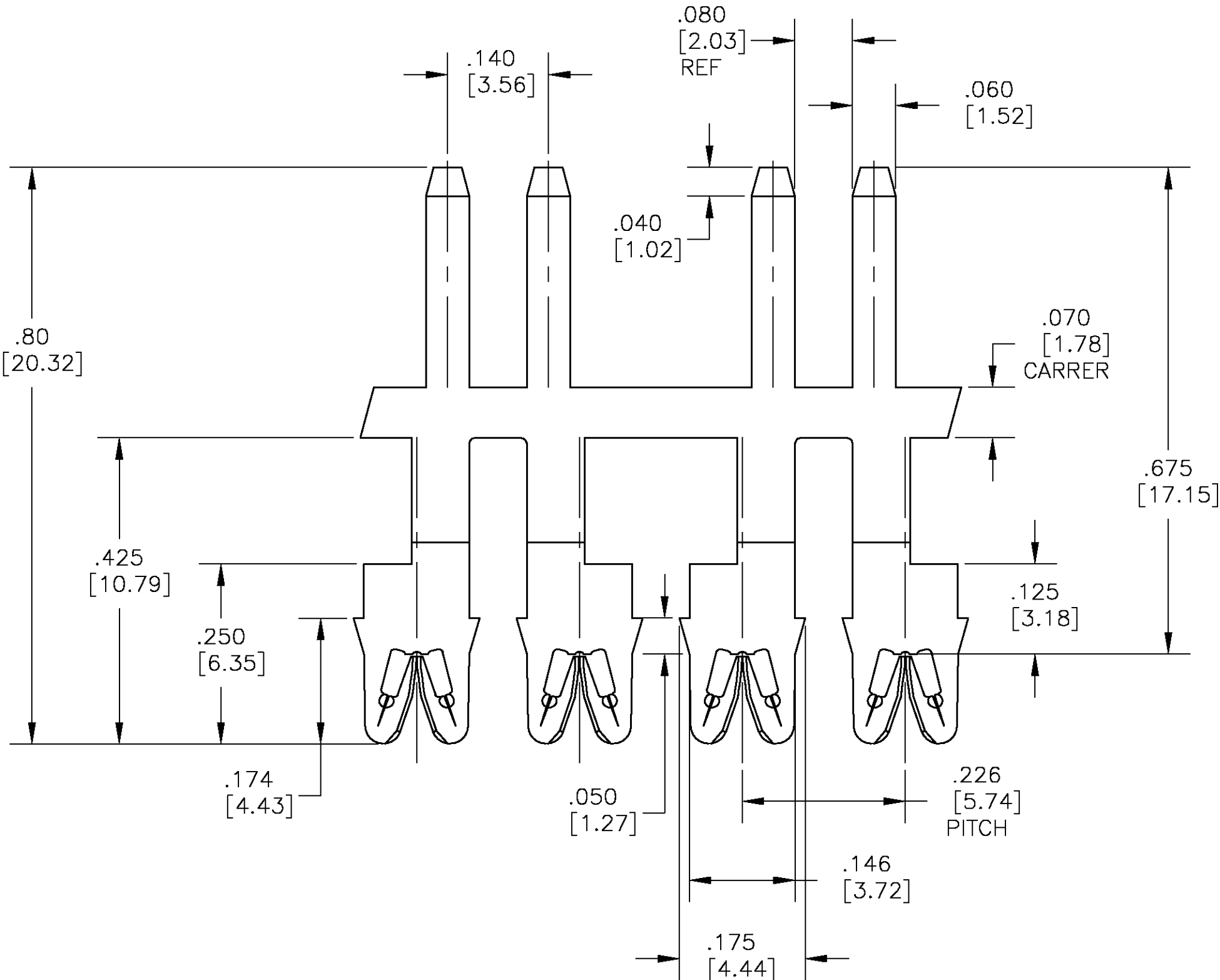


| LOC | DIST | REVISIONS | | | | | |
|-----|------|-----------|-----|----------------------|---------|-----|------|
| AF | 50 | P | LTR | DESCRIPTION | DATE | DWN | APVD |
| | | | C | REV PER 0663-0020-03 | 25APR02 | RF | GJ |

1. SPECIFICATIONS:
MAGNET WIRE #34 - #18 AWG,
.006" [0.16mm] - .040" [1.02mm] DIA.
OTHER SIZES MAY BE ACCOMMODATED,
CONSULT TYCO ELECTRONICS FOR APPROVAL.
2. POCKET RECOMMENDATION:
#1601427
3. NOTES:
EACH PART NO. REPRESENTS ONE
PAIR OF TERMINALS, ONE LEFT
HAND & ONE RIGHT HAND AS SHOWN



| | | |
|--|---|--|
| - | - | - |
| - | - | - |
| - | - | - |
| - | - | - |
| Pre-Tin Plate over Copper Underplate | 131-034-014 | 2-1601014-2 |
| Pre-Tin Plate over Copper Underplate | 131-033-014 | 1601014-2 |
| FINISH | REFERENCE PART NUMBER | TYCO PART NUMBER |
| THIS DRAWING IS A CONTROLLED DOCUMENT. | DWN J.WELLER 11JAN2002 CHK M.FEHER 11JAN2002 APVD K.RANDOLPH 11JAN2002 | NAME Tyco Electronics Corporation Harrisburg, PA 17105-3608 |
| DIMENSIONS: INCHES | TOLERANCES UNLESS OTHERWISE SPECIFIED: 0 PLC ± - 1 PLC ± - 2 PLC ± .01[0.25] 3 PLC ± .005[0.13] 4 PLC ± - ANGLES ± 2° | PRODUCT SPEC 108-2085 APPLICATION SPEC 408-8629 |
| MATERIAL BRASS, 3/4 HARD | FINISH SEE TABLE | WEIGHT - |
| CUSTOMER DRAWING | | SCALE 6:1 SHEET 1 OF 1 REV C |

Mouser Electronics

Authorized Distributor

Click to View Pricing, Inventory, Delivery & Lifecycle Information:

[TE Connectivity:](#)

[2-1601014-2](#)