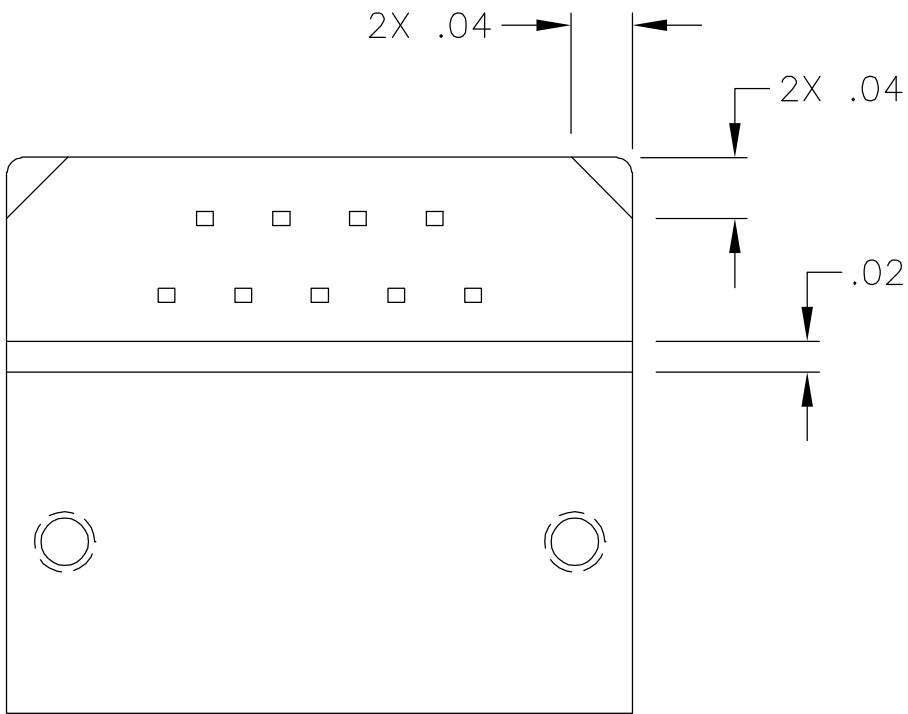
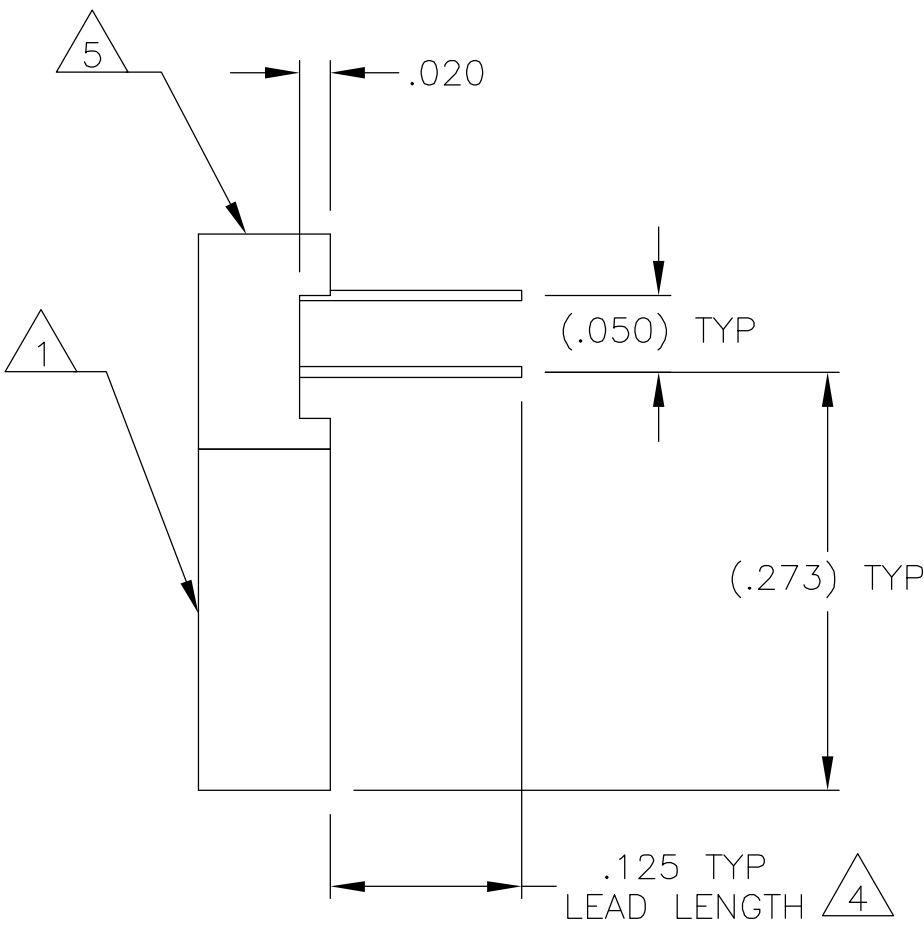
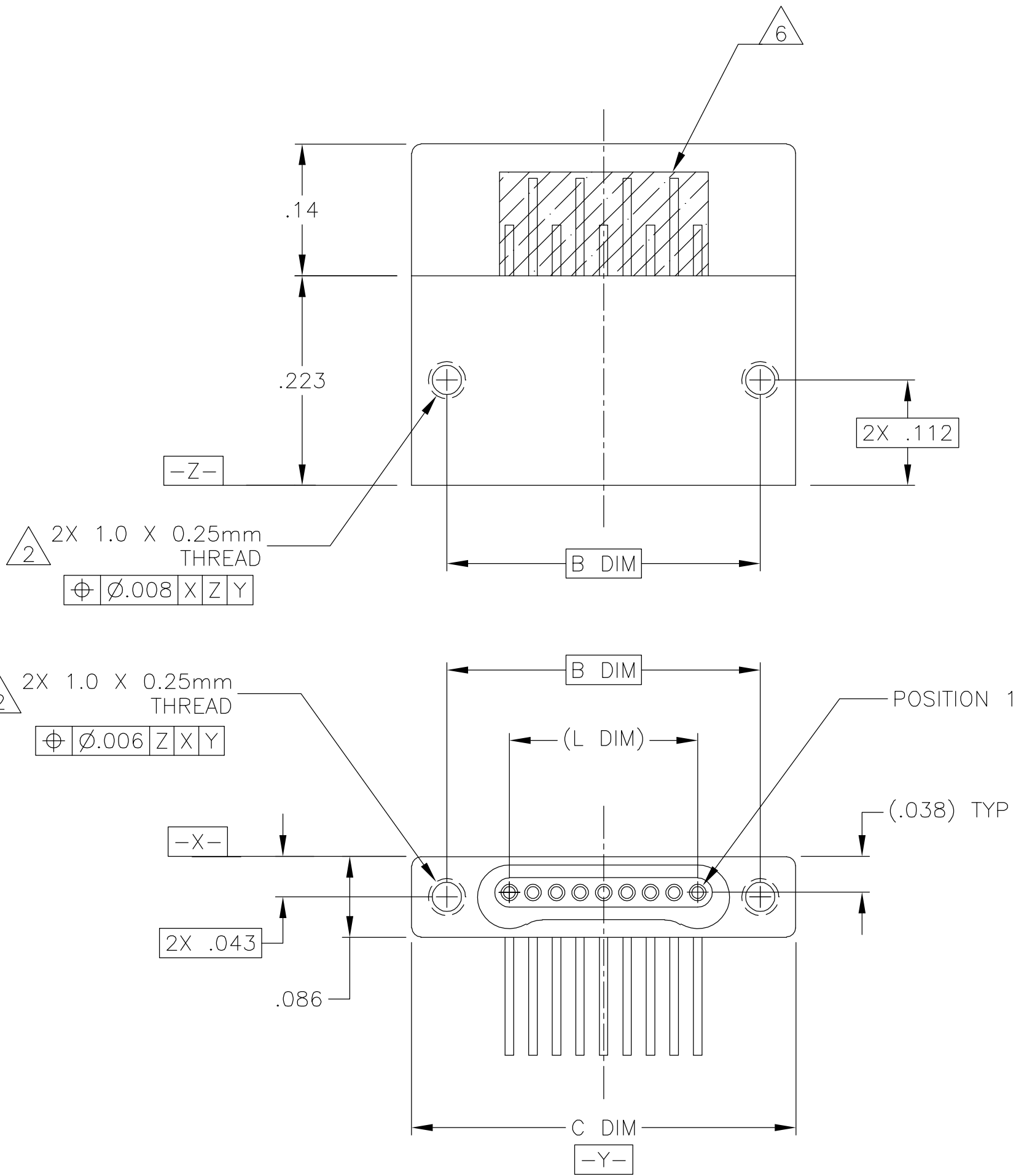



LOC	DIST	REVISIONS				
P	LTR	DESCRIPTION		DATE	DWN	APVD
	B	UPDATE PER ECO-06-001864		25 JAN 06	MJS	MKS

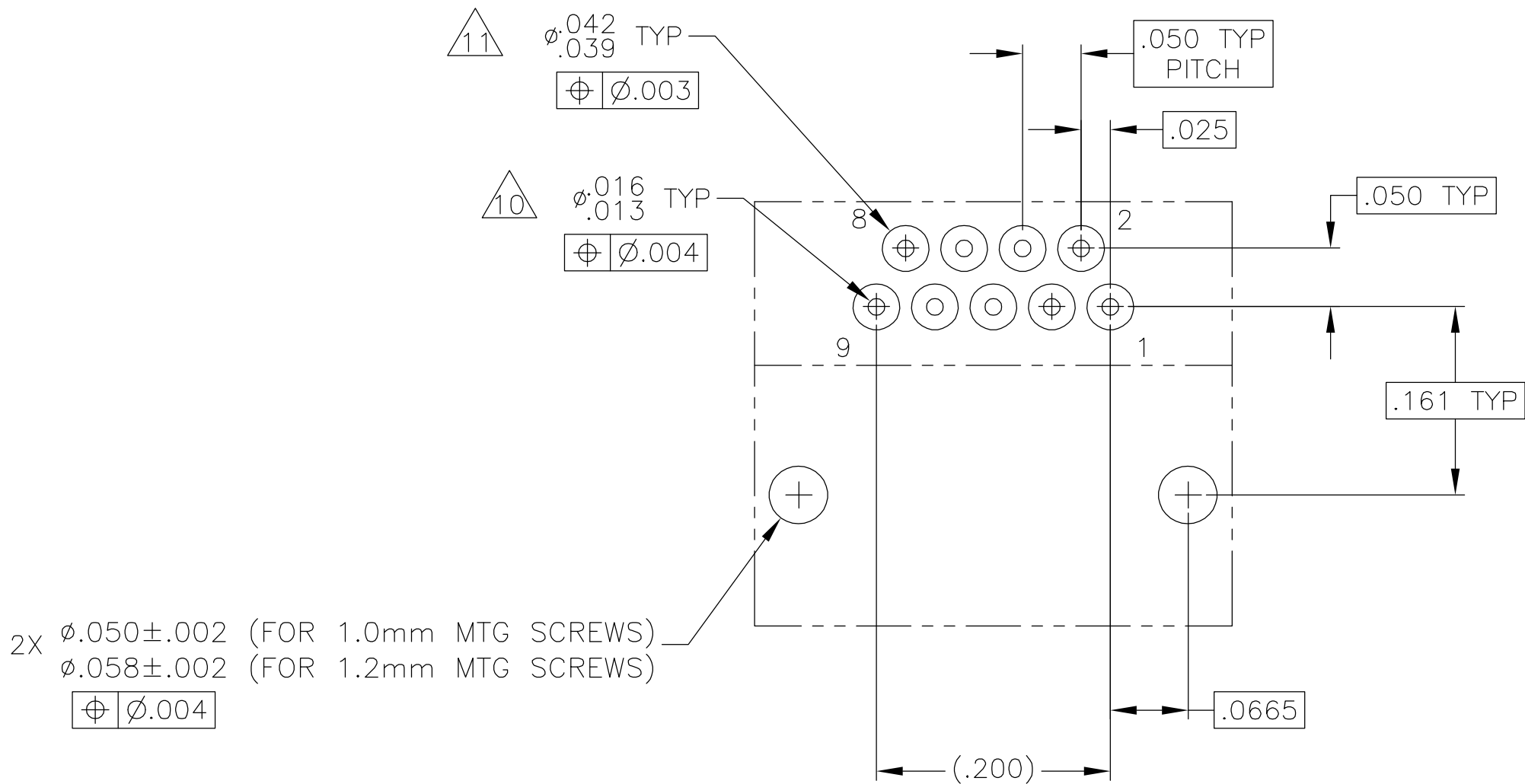
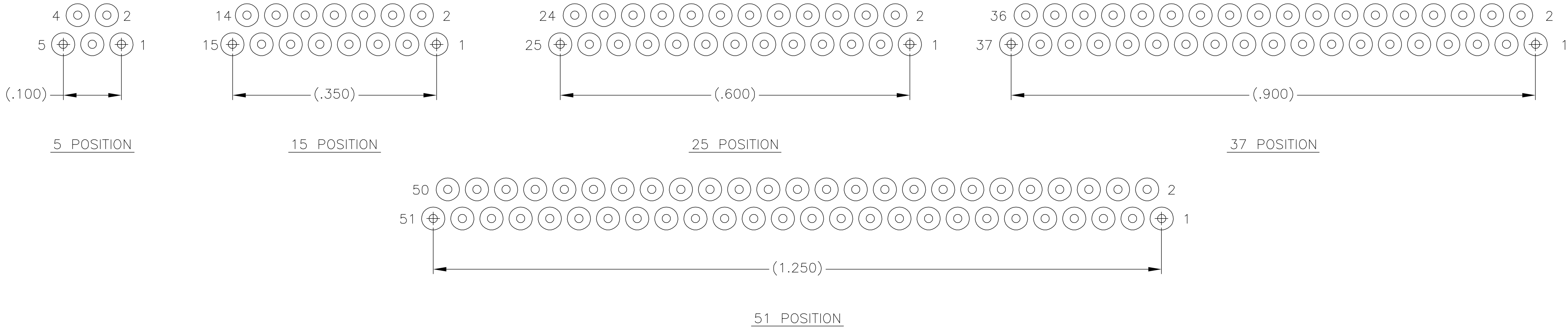


SIZE	B DIM	C DIM ±.0050	(L DIM)
05	.233	.3085	(.100)
09	.333	.4085	(.200)
15	.483	.5585	(.350)
25	.733	.8085	(.600)
37	1.033	1.1085	(.900)
51	1.383	1.4585	(1.250)

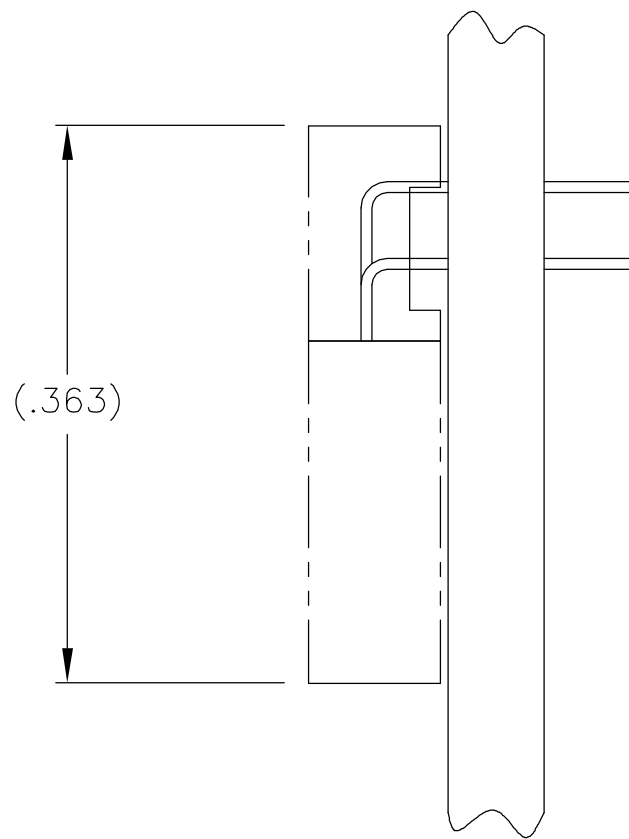
1. SHELL OPTIONS (TO BE SPECIFIED IN NANONICS PART NUMBER):  
METAL: 6061-T6 ALUMINUM, ELECTROLESS NICKEL PLATED PER SAE-AMS-C-26074 (STANDARD) OR GOLD PLATED PER ASTM B488  
303 STAINLESS STEEL, PASSIVATED PER SAE-AMS-2700  
INSULATOR MATERIAL FOR ALL METAL SHELLS IS LIQUID CRYSTAL POLYMER (LCP) PER MIL-M-24519 OR PER ASTM D5138  
PLASTIC: LIQUID CRYSTAL POLYMER (LCP) PER MIL-M-24519 OR PER ASTM D5138
2. STANDARD 1.0 X 0.25mm JACKSCREW AND MOUNTING THREADS ARE SHOWN FOR REFERENCE ONLY AND MUST BE SPECIFIED IN THE NANONICS PART NUMBER WHEN REQUIRED. 1.2 X 0.25mm THREADS ALSO AVAILABLE.
3. MOUNTING HARDWARE IS AVAILABLE WITH THIS CONFIGURATION (NOT SHOWN). HARDWARE MUST BE SPECIFIED IN THE NANONICS PART NUMBER. CONSULT TYCO ELECTRONICS FOR DETAILS.
4. LEADS ARE HH BRASS, TIN LEAD PLATED 60/40 COMPOSITION PER SAE-AMS-P-81728
5. LEAD ORGANIZER MATERIAL IS LIQUID CRYSTAL POLYMER PER ASTM D5138
6. THROUGH HOLE LEADS ARE EPOXY ENCAPSULATED WITHIN THE LEAD ORGANIZER
7. TERMINATION CODE: M61
8. THIS DRAWING PREVIOUSLY IDENTIFIED AS NANONICS N10138/165

THIS DRAWING IS A CONTROLLED DOCUMENT.		DWN C SCHOLL 4 NOV 04	<b>tyco</b> <b>Electronics</b> Tyco Electronics Corporation Harrisburg, PA 17105				
		CHK M. STORRY 4 NOV 04					
DIMENSIONS: INCHES		TOLERANCES UNLESS OTHERWISE SPECIFIED:		NAME			
		0 PLC ± - 1 PLC ± - 2 PLC ± .010 3 PLC ± .005 4 PLC ± - ANGLES ± 1° FINISH		RECEPTACLE ASSEMBLY, HORIZONTAL MOUNT, THROUGH HOLE, 1 ROW TO 2 ROW, .050 SPACING, PLASTIC OR METAL			
MATERIAL SEE NOTES		SEE NOTES		SIZE A2	CAGE CODE 0PJN9	DRAWING NO C=1589899	RESTRICTED TO -
CUSTOMER DRAWING				SCALE 8:1	SHEET 1 of 2	REV B	

LOC —	DIST —	REVISIONS					
		P	LTR	DESCRIPTION	DATE	DWN	APVD
			—	SEE SHEET 1	—	—	—



TYPICAL PCB LAYOUT  
SIZE 09 SHOWN FOR REFERENCE



9.

POSITIONAL TOLERANCES FOR BASIC DIMENSIONED FEATURES ARE RELATIVE TO FIDUCIALS OR SOME SIMILAR DATUM REFERENCES DEFINED BY PCB DESIGNER.
10.

PLATED THROUGH HOLES
11.

SOLDER PADS
12.

ALL THROUGH HOLE LAYOUTS ARE AS VIEWED FROM TOP OF PCB.

THIS DRAWING IS A CONTROLLED DOCUMENT.		DWN C SCHOLL	4 NOV 04	<b>tyco</b> <b>Electronics</b> Tyco Electronics Corporation Harrisburg, PA 17105				
DIMENSIONS: INCHES		CHK M. STORRY	4 NOV 04					
	TOLERANCES UNLESS OTHERWISE SPECIFIED: 0 PLC ± - 1 PLC ± - 2 PLC ± .010 3 PLC ± .005 4 PLC ± - ANGLES ± 1°	APVD -		NAME		RECEPTACLE ASSEMBLY, HORIZONTAL MOUNT, THROUGH HOLE, 1 ROW TO 2 ROW, .050 SPACING, PLASTIC OR METAL		
		PRODUCT SPEC -						
		APPLICATION SPEC -						
		MATERIAL		FINISH		SIZE	CAGE CODE	DRAWING NO
SEE NOTES		SEE NOTES		WEIGHT -	A2	OPJN9	C=1589899	-
CUSTOMER DRAWING				SCALE	8:1	SHEET	2 of 2	REV B

# Mouser Electronics

Authorized Distributor

Click to View Pricing, Inventory, Delivery & Lifecycle Information:

[TE Connectivity:](#)

[1589899-2](#)