

SIZE	A DIM	B DIM	C DIM $\pm .0050$	(L DIM)
09	.050	.229	.3085	(.100)
15	.0875	.304	.3835	(.175)
25	.150	.429	.5085	(.300)
37	.225	.579	.6585	(.450)
51	.3125	.754	.8335	(.625)
65	.400	.929	1.0085	(.800)

THIS DRAWING IS UNPUBLISHED.

RELEASED FOR PUBLICATION

© COPYRIGHT - BY TYCO ELECTRONICS CORPORATION. ALL RIGHTS RESERVED.

LOC	DF
-----	----

DIST	DC
------	----

REVISIONS

	P
--	---

LTR

DESCRIPTION

DATE _____

DWN

APVD

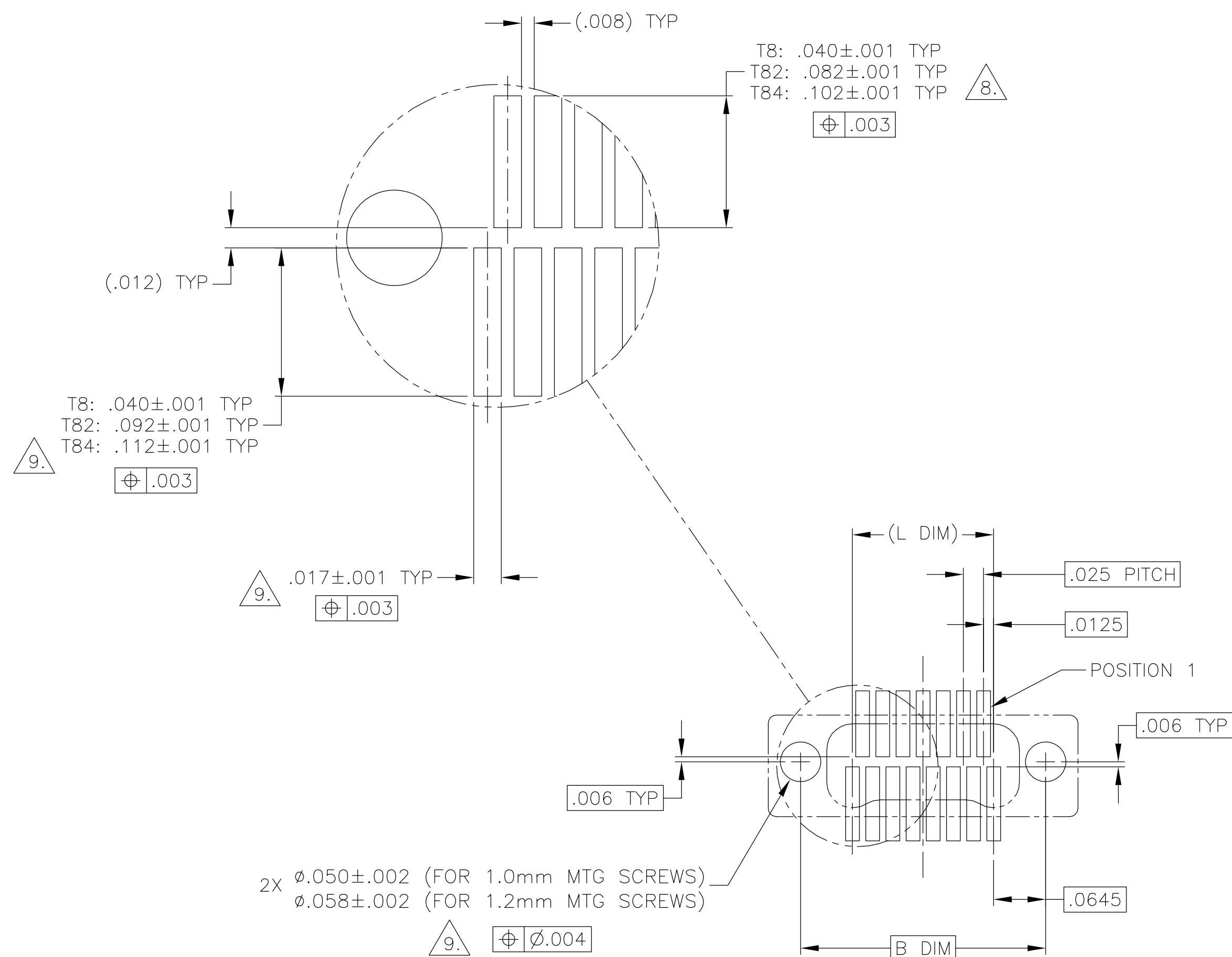
	F
--	---

UPDATE PER 0H2Y-0164-04

12 MAY 04

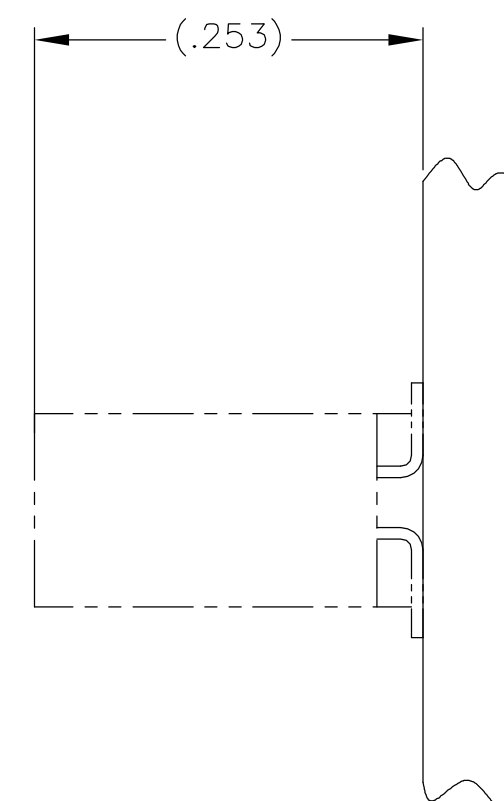
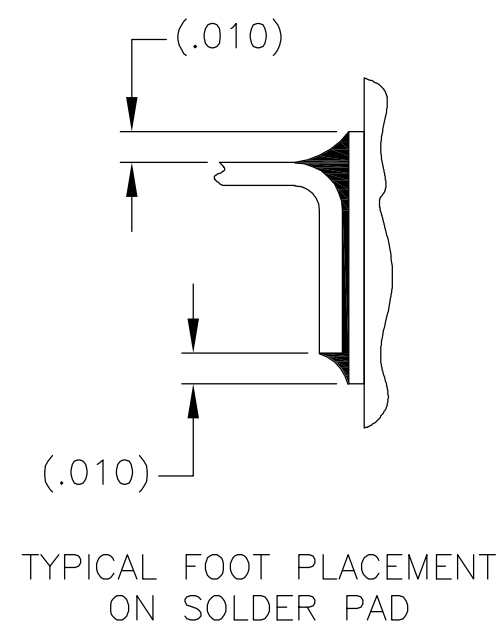
CAS

MK S



SIZE 15 SHOWN FOR REFERENCE

TYPICAL PCB LAYOUT



9. POSITIONAL TOLERANCES FOR BASIC DIMENSIONED FEATURES ARE RELATIVE TO FIDUCIALS OR SOME SIMILAR DATUM REFERENCE DEFINED BY THE PCB DESIGNER.

THIS DRAWING IS A CONTROLLED DOCUMENT.

DWN	13 JAN 04
M STORRY	

CHK	—
-----	---

—	
APVD	—

—	
PRODUCT SPEC	

APPLICATION SPEC

[illegible]

tyco Electronics	Tyco Electronics Corporation Harrisburg, PA 17105
-----------------------------------	--

NAME	RECEPTACLE ASSEMBLY, VERTICAL SURFACE MOUNT, TWO ROW DUALLOBE, GOLD PLATED LEADS, METAL SHELL, W/INTEGRATED STANDOFFS
------	---

SIZE	CAGE CODE	DRAWING NO	RESTRICTED TO
------	-----------	------------	---------------

A2 00779 C-1589842	—
--------------------	---

AMP 1471-9 REV 31MAR2000

Mouser Electronics

Authorized Distributor

Click to View Pricing, Inventory, Delivery & Lifecycle Information:

[TE Connectivity:](#)

[STG025T84HN](#)