



SIZE	A DIM	B DIM	C DIM $\pm .0050$	(L DIM)
09	.050	.229	.3085	(.100)
15	.0875	.304	.3835	(.175)
25	.150	.429	.5085	(.300)
37	.225	.579	.6585	(.450)
51	.3125	.754	.8335	(.625)
65	.400	.929	1.0085	(.800)

1. SHELL OPTIONS (TO BE SPECIFIED IN NANONICS PART NUMBER):
 METAL: 6061-T6 ALUMINUM, ELECTROLESS NICKEL PLATED PER MIL-C-26074 (STANDARD) OR GOLD PLATED PER MIL-G-45204
 303 STAINLESS STEEL, PASSIVATED PER SAE-AMS-QQ-P-35
 INSULATOR MATERIAL FOR ALL METAL SHELLS IS LIQUID CRYSTAL POLYMER (LCP) PER MIL-M-24519 OR PER ASTM D5138
 PLASTIC: LIQUID CRYSTAL POLYMER (LCP) PER MIL-M-24519 OR PER ASTM D5138
 2. STANDARD 1.0 X 0.25mm MOUNTING AND JACKSCREW THREADS ARE SHOWN FOR REFERENCE ONLY AND MUST BE SPECIFIED IN THE NANONICS PART NUMBER WHEN REQUIRED. 1.2 X 0.25mm THREADS ALSO AVAILABLE.
 3. MOUNTING HARDWARE IS AVAILABLE WITH THIS CONFIGURATION (NOT SHOWN). HARDWARE MUST BE SPECIFIED IN THE NANONICS PART NUMBER. CONSULT TYCO ELECTRONICS FOR DETAILS.
 4. SMT LEADS ARE BeCu, GOLD PLATED PER MIL-G-45204 OVER NICKEL PLATE PER SAE-AMS-QQ-N-290
 5. NANONICS TERMINATION CODE: T2
 6. THIS DRAWING PREVIOUSLY IDENTIFIED AS NANONICS N10138/270

THIS DRAWING IS A CONTROLLED DOCUMENT.		DWN C. SCHOLL		6 AUG 03		 Tyco Electronics Corporation Harrisburg, PA 17105	
		CHK M. STORRY		6 AUG 03			
DIMENSIONS: INCHES		TOLERANCES UNLESS OTHERWISE SPECIFIED:		APVD —		NAME RECEPTACLE ASSEMBLY, HORIZONTAL SURFACE MOUNT, TWO ROW DUALOBE, GOLD PLATED LEADS, PLASTIC OR METAL	
		0 PLC ± —		PRODUCT SPEC			
		1 PLC ± —		—			
		2 PLC ± .010		APPLICATION SPEC			
		3 PLC ± .005		—		SIZE	
		4 PLC ± —		—		CAGE CODE	
ANGLES ± 1						DRAWING NO	
MATERIAL		FINISH		WEIGHT		RESTRICTED TO	
SEE NOTES		SEE NOTES		—		A2 00779 C-1589815	
CUSTOMER DRAWING				SCALE		SHEET	
				8.1		1 OF 2	
						REV B	

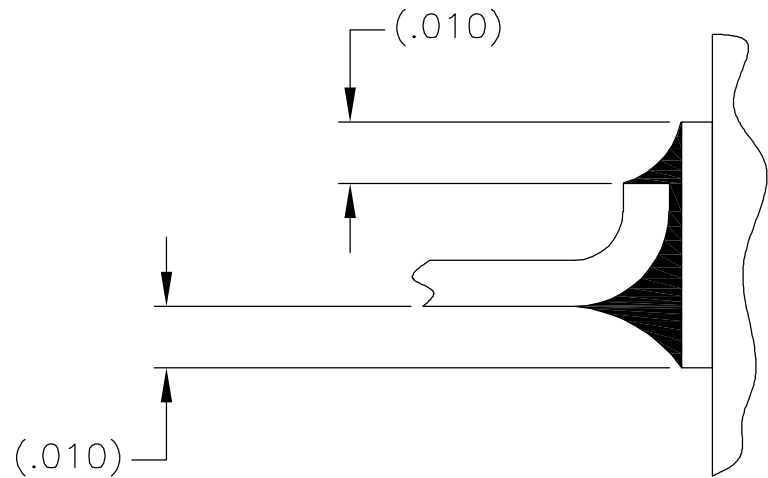
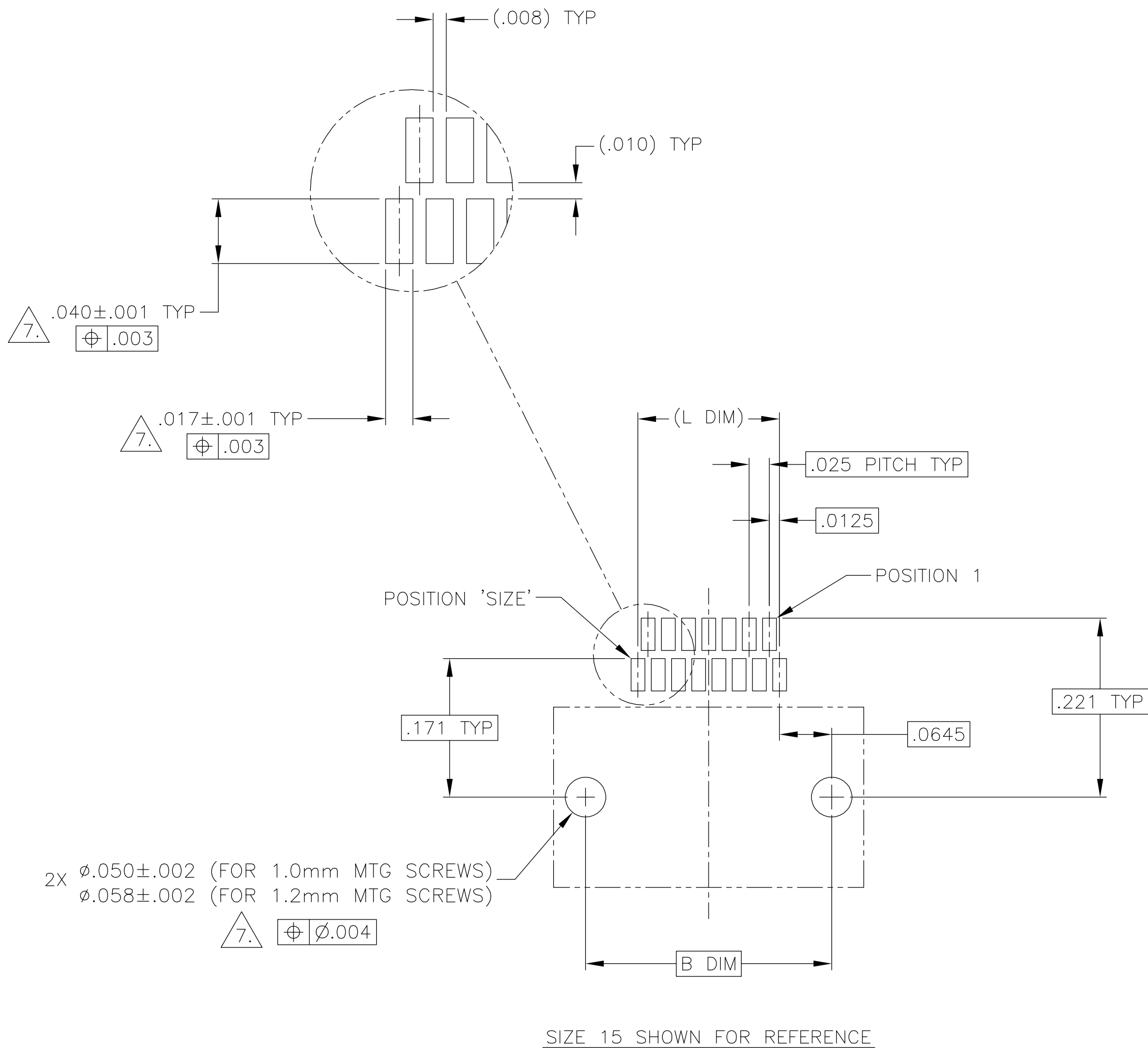
A

THIS DRAWING IS UNPUBLISHED.

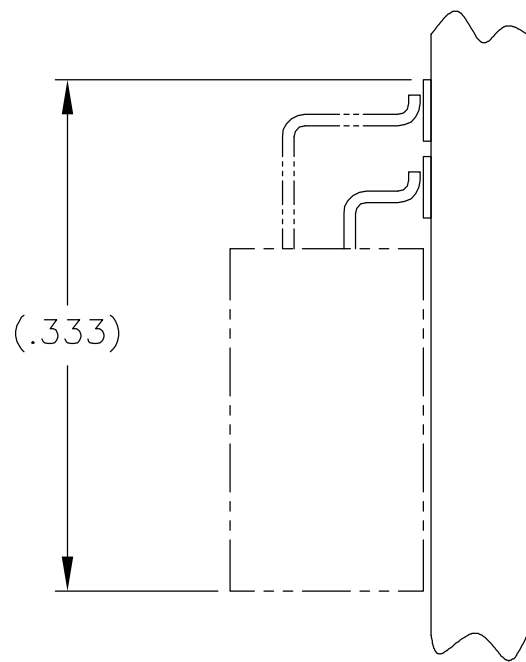
RELEASED FOR PUBLICATION

© COPYRIGHT - BY TYCO ELECTRONICS CORPORATION. ALL RIGHTS RESERVED.

LOC	DIST	REVISIONS				
DF	D0	P	LTR	DESCRIPTION	DATE	DWN APVD
		B		UPDATE PER 0H2Y-0164-04	12 MAY 04	CAS MKS



TYPICAL FOOT PLACEMENT
ON SOLDER PAD



TYPICAL PCB LAYOUT

$\triangle 7.$ POSITIONAL TOLERANCES FOR BASIC DIMENSIONED FEATURES ARE RELATIVE TO FIDUCIALS OR SOME SIMILAR DATUM REFERENCE DEFINED BY THE PCB DESIGNER.

THIS DRAWING IS A CONTROLLED DOCUMENT.

DIMENSIONS:	TOLERANCES UNLESS OTHERWISE SPECIFIED:
INCHES	
	0 PLC ± -
	1 PLC ± -
	2 PLC ± -
	3 PLC ± -
	4 PLC ± -
	ANGLES ± -
MATERIAL -	FINISH -

DWN	6 AUG 03
CHK	6 AUG 03
APVD	-
PRODUCT SPEC	-
APPLICATION SPEC	-
WEIGHT	-
CUSTOMER DRAWING	

C. SCHOLL		6 AUG 03	
M. STORRY		6 AUG 03	
APVD		-	
NAME		-	
tyco Electronics		Tyco Electronics Corporation Harrisburg, PA 17105	
RECEPTACLE ASSEMBLY, HORIZONTAL SURFACE MOUNT, TWO ROW DUALLOBE, GOLD PLATED LEADS, PLASTIC OR METAL		RESTRICTED TO -	
SIZE	CAGE CODE	DRAWING NO	
A2	00779	C=1589815	
SCALE	8:1	SHEET	2 OF 2
REV	B		

Mouser Electronics

Authorized Distributor

Click to View Pricing, Inventory, Delivery & Lifecycle Information:

[TE Connectivity:](#)

[STG051T2AQ](#)