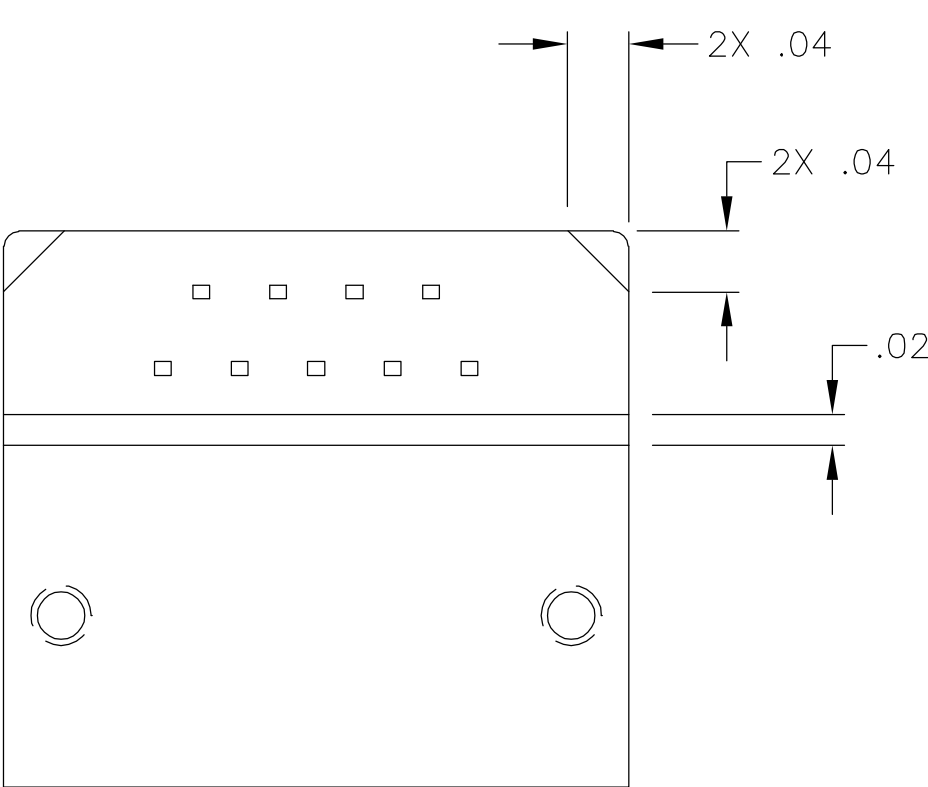
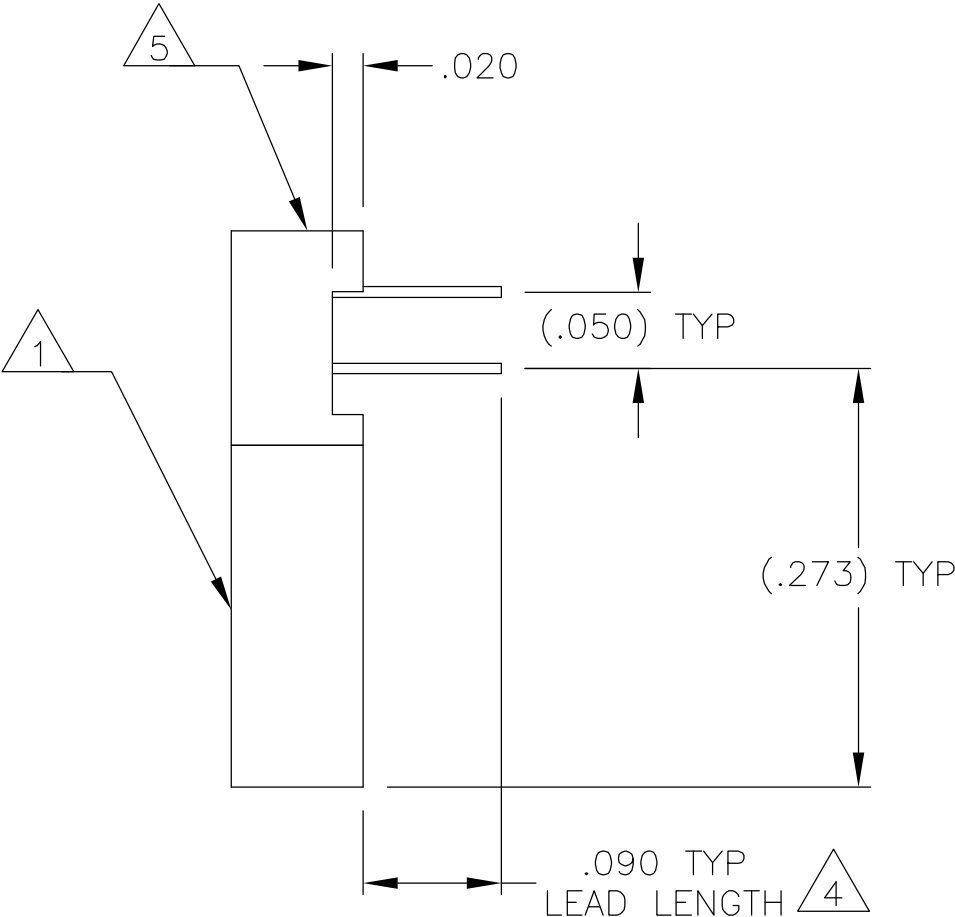
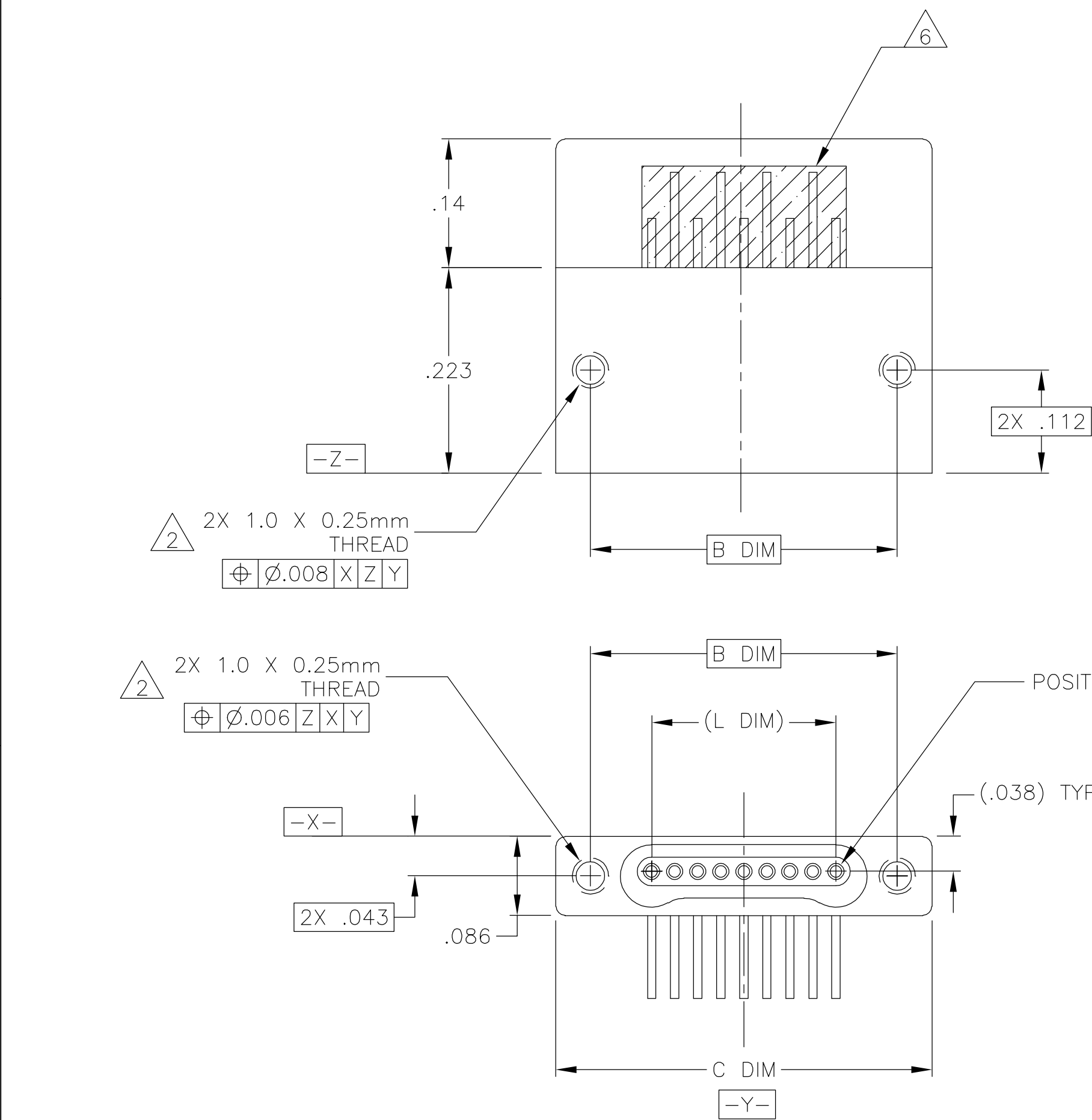


		1					
LOC	DIST	REVISIONS					
—	—	P	LTR	DESCRIPTION	DATE	DWN	APVD
			C	UPDATE PER ECO-06-001864	25 JAN 06	MJS	MKS



1.

SHELL OPTIONS (TO BE SPECIFIED IN NANONICS PART NUMBER):
METAL: 6061-T6 ALUMINUM, ELECTROLESS NICKEL PLATED PER SAE-AMS-C-26074 (STANDARD) OR GOLD PLATED PER ASTM B488
303 STAINLESS STEEL, PASSIVATED PER SAE-AMS-2700
INSULATOR MATERIAL FOR ALL METAL SHELLS IS LIQUID CRYSTAL POLYMER (LCP) PER MIL-M-24519 OR PER ASTM D5138
PLASTIC: LIQUID CRYSTAL POLYMER (LCP) PER MIL-M-24519 OR PER ASTM D5138
2.

STANDARD 1.0 X 0.25mm JACKSCREW AND MOUNTING THREADS ARE SHOWN FOR REFERENCE ONLY AND MUST BE SPECIFIED IN THE NANONICS PART NUMBER WHEN REQUIRED. 1.2 X 0.25mm THREADS ALSO AVAILABLE.
3.

MOUNTING HARDWARE IS AVAILABLE WITH THIS CONFIGURATION (NOT SHOWN). HARDWARE MUST BE SPECIFIED IN THE NANONICS PART NUMBER. CONSULT TYCO ELECTRONICS FOR DETAILS.
4.

LEADS ARE HH BRASS, GOLD PLATED PER ASTM B488 OVER NICKEL PLATE PER SAE-AMS-QQ-N-290
5.

LEAD ORGANIZER MATERIAL IS LIQUID CRYSTAL POLYMER PER ASTM D5138
6.

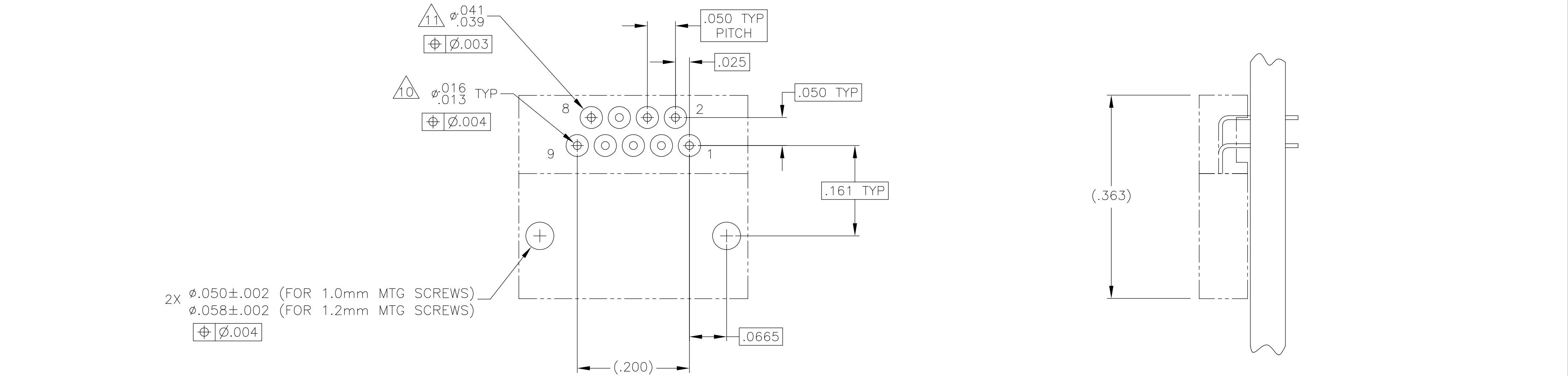
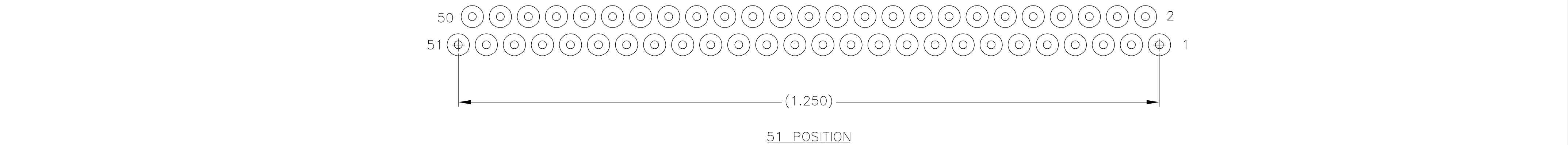
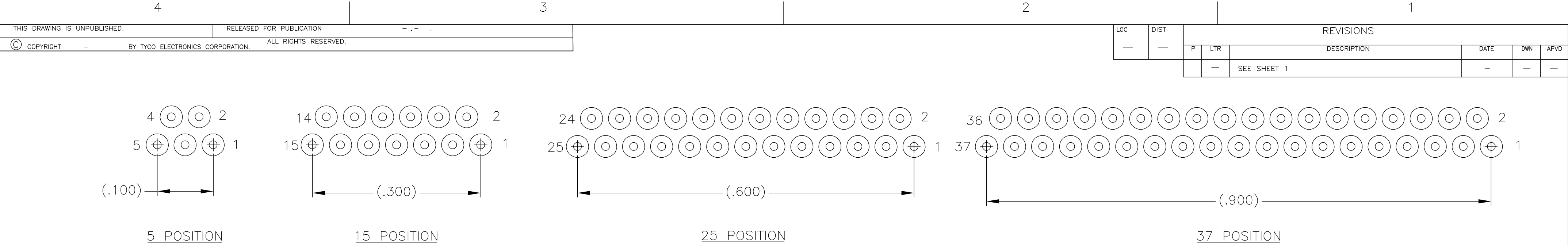
THROUGH HOLE LEADS ARE EPOXY ENCAPSULATED WITHIN THE LEAD ORGANIZER
7.

TERMINATION CODE: W6.
8.

THIS DRAWING PREVIOUSLY IDENTIFIED AS NANONICS N10138/151

SIZE	B DIM	C DIM ±.0050	(L DIM)
05	.233	.3085	(.100)
09	.333	.4085	(.200)
15	.483	.5585	(.350)
25	.733	.8085	(.600)
37	1.033	1.1085	(.900)
51	1.383	1.4585	(1.250)

THIS DRAWING IS A CONTROLLED DOCUMENT.		DWN C. SCHOLL	6 AUG 03	tyco Electronics Tyco Electronics Corporation Harrisburg, PA 17105		
DIMENSIONS: INCHES		CHK M. STORRY	6 AUG 03			
TOLERANCES UNLESS OTHERWISE SPECIFIED:		APVD —	—	NAME RECEPTACLE ASSEMBLY, HORIZONTAL MOUNT, THROUGH HOLE, 1 ROW TO 2 ROW, .050 SPACING, GOLD PLATED LEADS, PLASTIC OR METAL		
MATERIAL SEE NOTES		PRODUCT SPEC —	—	SIZE A2	CAGE CODE 0PJN9	DRAWING NO C=1589812
FINISH SEE NOTES		APPLICATION SPEC —	—	RESTRICTED TO —	SCALE 8:1	
WEIGHT —		CUSTOMER DRAWING	—	SHEET 1 of 2	REV C	



TYPICAL PCB LAYOUT

SIZE 09 SHOWN FOR REFERENCE

9

9. POSITIONAL TOLERANCES FOR BASIC DIMENSIONED FEATURES ARE RELATIVE TO FIDUCIALS OR SOME SIMILAR DATUM REFERENCES DEFINED BY PCB DESIGNER.
10. PLATED THROUGH HOLES
11. SOLDER PADS
12. ALL THROUGH HOLE LAYOUTS ARE AS VIEWED FROM TOP OF PCB.

THIS DRAWING IS A CONTROLLED DOCUMENT.

DWN

C. SCHOLL

6 AUG 03

CHK

M. STORRY

6 AUG 03

APVD

—

—

DIMENSIONS:

INCHES

TOLERANCES UNLESS OTHERWISE SPECIFIED:

0 PLC

\pm

—

1 PLC

\pm

—

2 PLC

\pm

.010

3 PLC

\pm

.005

4 PLC

\pm

—

ANGLES

\pm

1

FINISH

SEE NOTES

MATERIAL

SEE NOTES

WEIGHT

—

CUSTOMER DRAWING

DWN

C. SCHOLL

6 AUG 03

CHK

M. STORRY

6 AUG 03

APVD

—

—

PRODUCT SPEC

—

APPLICATION SPEC

—

WEIGHT

—

NAME

RECEPTACLE ASSEMBLY, HORIZONTAL MOUNT, THROUGH HOLE, 1 ROW TO 2 ROW, .050 SPACING, GOLD PLATED LEADS, PLASTIC OR METAL

SIZE

A2

CAGE CODE

0PJN9

DRAWING NO

C=1589812

RESTRICTED TO

—

SCALE

8:1

SHEET

2 of 2

REV

C

tyco

Electronics

Tyco Electronics Corporation

Harrisburg, PA 17105

Mouser Electronics

Authorized Distributor

Click to View Pricing, Inventory, Delivery & Lifecycle Information:

[TE Connectivity:](#)

[SSG051W6HN](#)