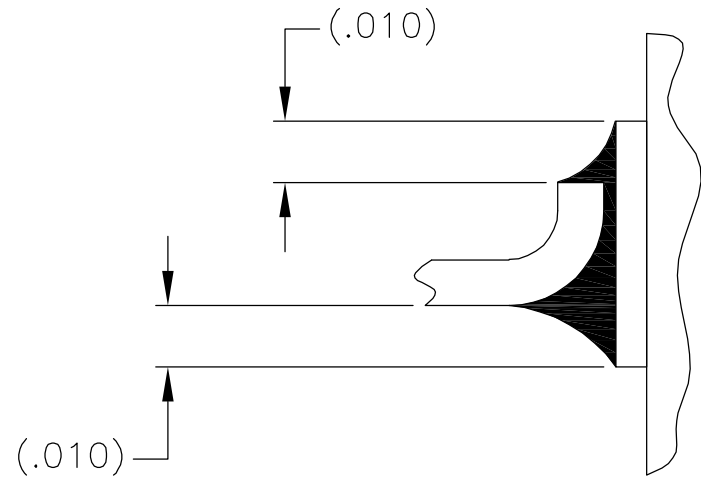
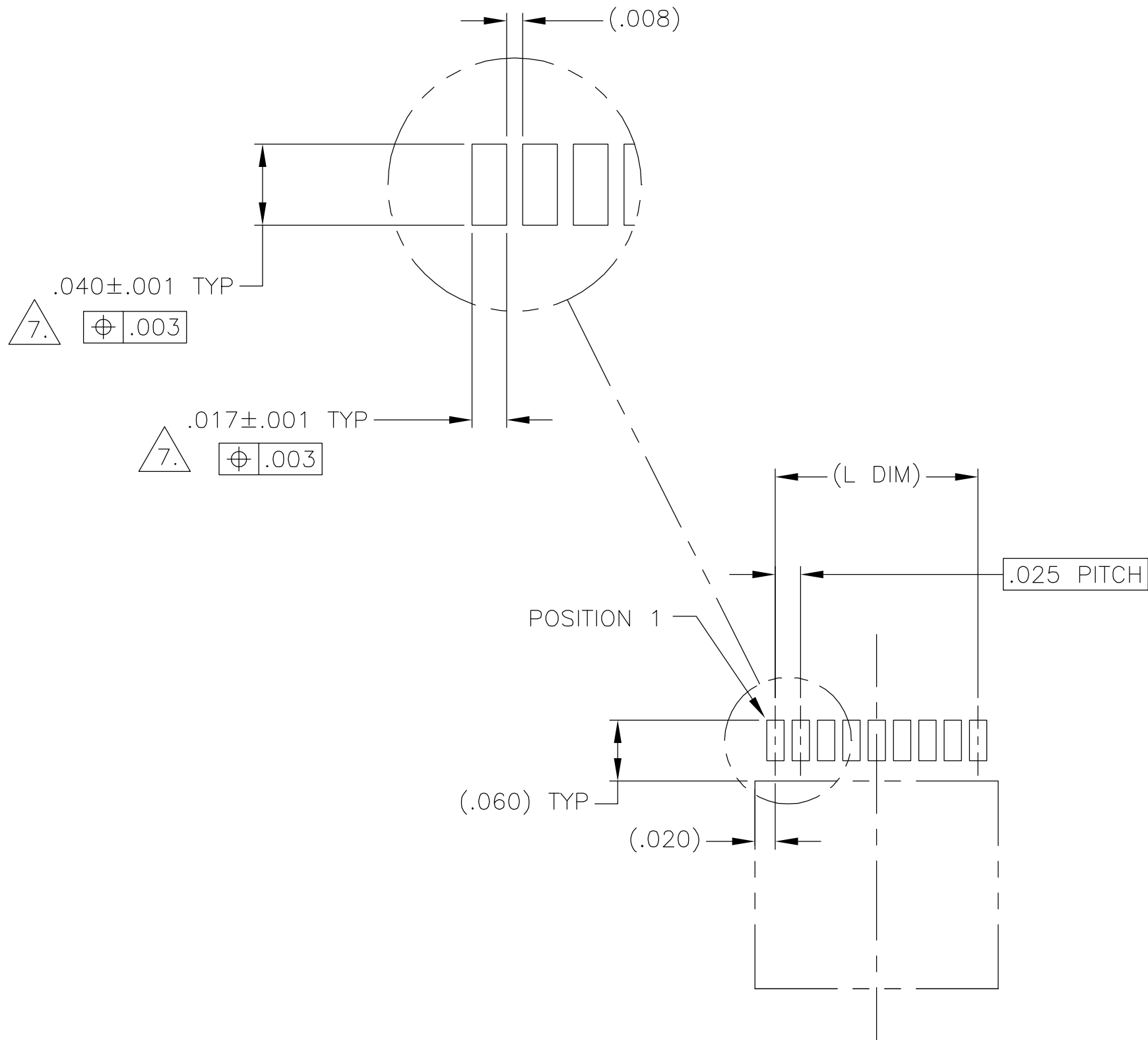
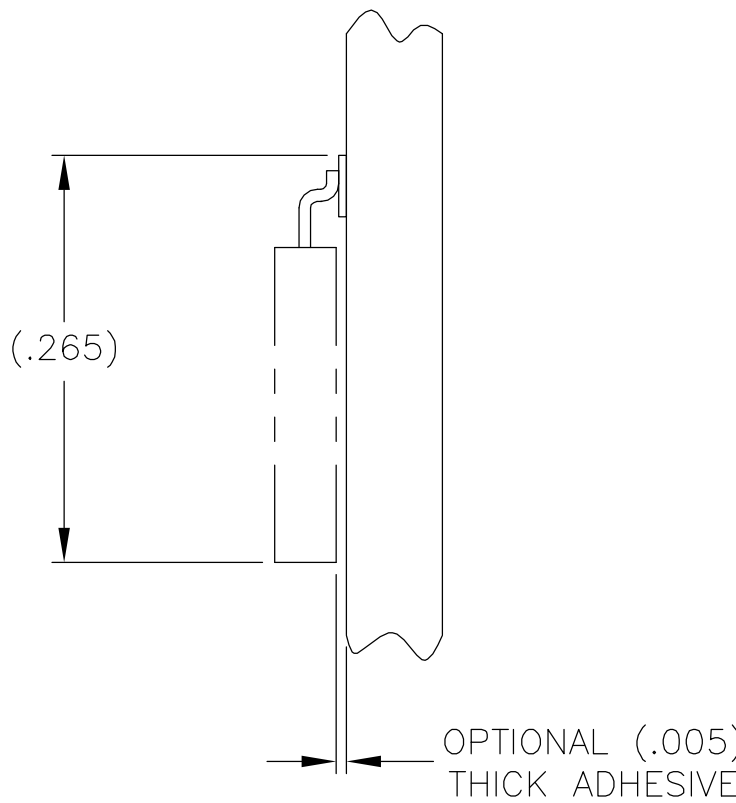


| LOC | DIST | REVISIONS | | | | |
|-----|------|-----------|-----|-------------------------|----------|----------|
| DF | D0 | P | LTR | DESCRIPTION | DATE | DWN APVD |
| | | B | | UPDATE PER 0H2Y-0026-04 | 08-05-03 | JDM MKS |



TYPICAL FOOT PLACEMENT
ON SOLDER PAD



TYPICAL PCB LAYOUT

7. POSITIONAL TOLERANCES FOR BASIC DIMENSIONED FEATURES ARE RELATIVE TO FIDUCIALS OR SOME SIMILAR DATUM REFERENCE DEFINED BY THE PCB DESIGNER.

| | | | | | | | | | |
|--|--|--------------------------------|---|--------------------|-------------------------|--------------------|--------------|-----------------|----------|
| THIS DRAWING IS A CONTROLLED DOCUMENT. | | DWN C. SCHOLL 08-06-03 | tyco Electronics Tyco Electronics Corporation Harrisburg, PA 17105 | | | | | | |
| DIMENSIONS: INCHES | | CHK M. STORRY 08-06-03 | NAME PLUG ASSEMBLY, UNSHROUDED STRIP, HORIZONTAL SMT, GOLD PLATED LEADS, PLASTIC | | | | | | |
| | TOLERANCES UNLESS OTHERWISE SPECIFIED: | APVD D. MORALES 01-27-04 | | | | | | | |
| | 0 PLC ± - | PRODUCT SPEC — | SIZE A2 | CAGE CODE 00779 | DRAWING NO C=1589811 | RESTRICTED TO — | | | |
| | 1 PLC ± - | APPLICATION SPEC — | | | | | | | |
| | 2 PLC ± .010 3 PLC ± .005 4 PLC ± - ANGLES ± 1° | — | | | | | | | |
| MATERIAL — | FINISH — | WEIGHT — | CUSTOMER DRAWING | | | | SCALE 8:1 | SHEET 2 OF 2 | REV B |

Mouser Electronics

Authorized Distributor

Click to View Pricing, Inventory, Delivery & Lifecycle Information:

[TE Connectivity:](#)

[1589811-2](#)