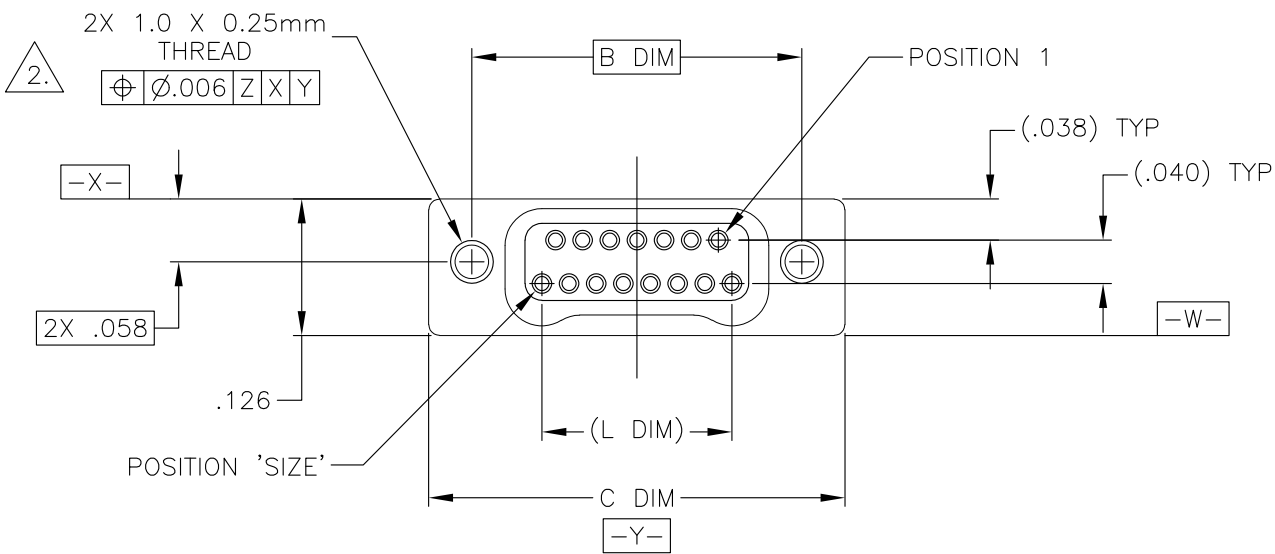
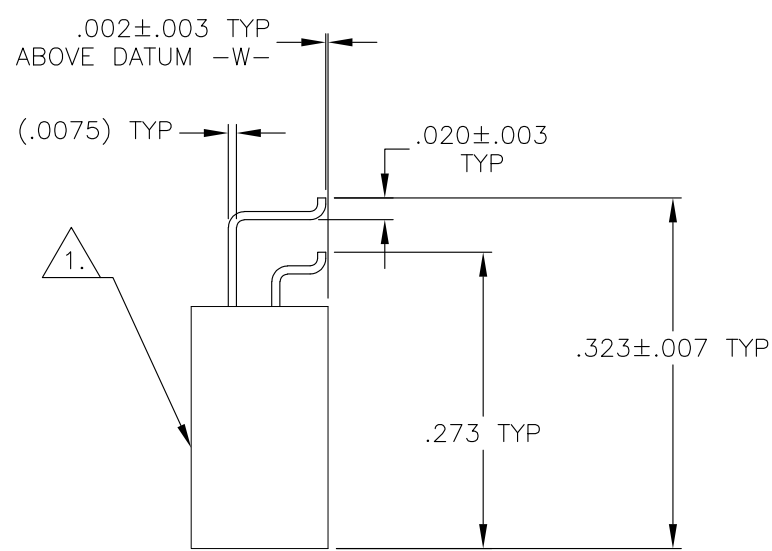
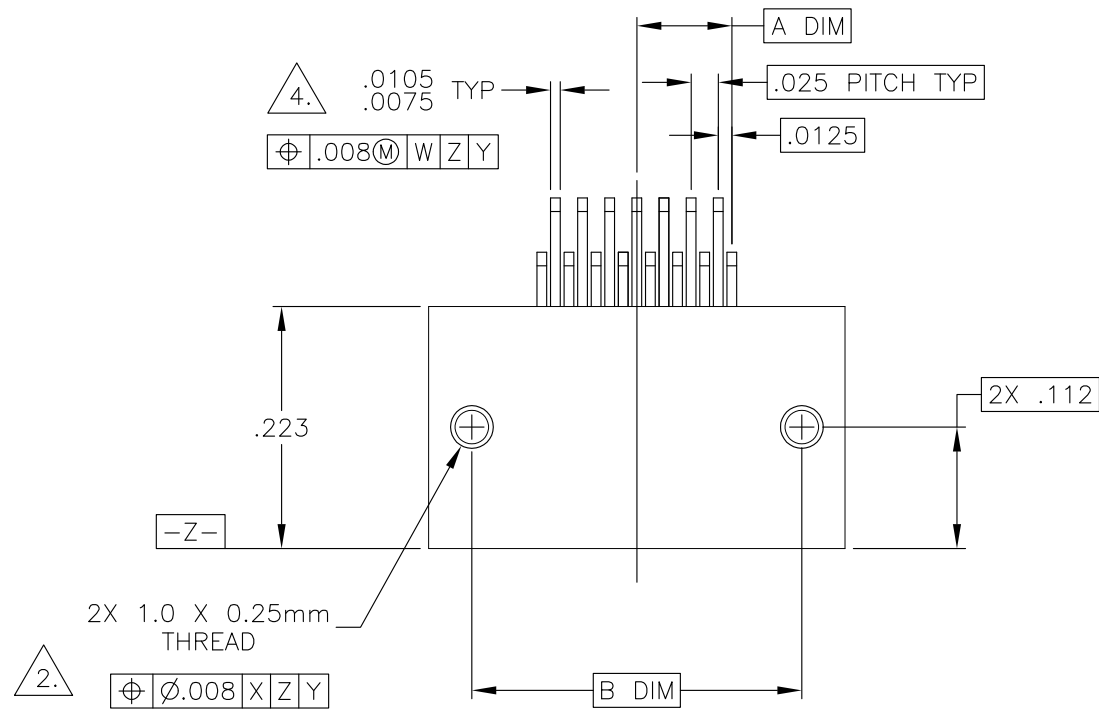


LOC	DIST	REVISIONS					
		P	LTR	DESCRIPTION	DATE	DWN	APVD
DF	D0		U2	REVISED PER ECO-14-013212	09OCT14	MGM	CT



SIZE	A DIM	B DIM	C DIM ±.0050	(L DIM)
09	.050	.229	.3085	(.100)
15	.0875	.304	.3835	(.175)
25	.150	.429	.5085	(.300)
37	.225	.579	.6585	(.450)
51	.3125	.754	.8335	(.625)
65	.400	.929	1.0085	(.800)

1. SHELL OPTIONS (TO BE SPECIFIED IN NANONICS PART NUMBER):  
METAL: 6061-T6 ALUMINUM, ELECTROLESS NICKEL PLATED PER MIL-C-26074 (STANDARD) OR GOLD PLATED PER MIL-G-45204  
303 STAINLESS STEEL, PASSIVATED PER SAE-AMS-QQ-P-35  
INSULATOR MATERIAL FOR ALL METAL SHELLS IS LIQUID CRYSTAL POLYMER (LCP) PER MIL-M-24519 OR PER ASTM D5138  
PLASTIC: LIQUID CRYSTAL POLYMER (LCP) PER MIL-M-24519 OR PER ASTM D5138
2. STANDARD 1.0 X 0.25mm MOUNTING AND JACKSCREW THREADS ARE SHOWN FOR REFERENCE ONLY AND MUST BE SPECIFIED IN THE NANONICS PART NUMBER WHEN REQUIRED. 1.2 X 0.25mm THREADS ALSO AVAILABLE.
3. MOUNTING HARDWARE IS AVAILABLE WITH THIS CONFIGURATION (NOT SHOWN). HARDWARE MUST BE SPECIFIED IN THE NANONICS PART NUMBER. CONSULT TE CONNECTIVITY FOR DETAILS.
4. SMT LEADS ARE BeCu, TIN LEAD PLATED 60/40 COMPOSITION PER SAE-AMS-P-81728.
5. NANONICS TERMINATION CODE: L2
6. THIS DRAWING PREVIOUSLY IDENTIFIED AS NANONICS N10138/230

THIS DRAWING IS A CONTROLLED DOCUMENT.

DIMENSIONS:  
INCHES

MATERIAL  
SEE NOTES

TOLERANCES UNLESS OTHERWISE SPECIFIED:

0 PLC ± -  
1 PLC ± -  
2 PLC ± .010  
3 PLC ± .005  
4 PLC ± -  
ANGLES ± 1°  
FINISH  
SEE NOTES

DWN M. STORRY 15 FEB 01  
CHK S. KAIN 15 FEB 01  
APVD -  
PRODUCT SPEC -  
APPLICATION SPEC -  
WEIGHT -  
CUSTOMER DRAWING

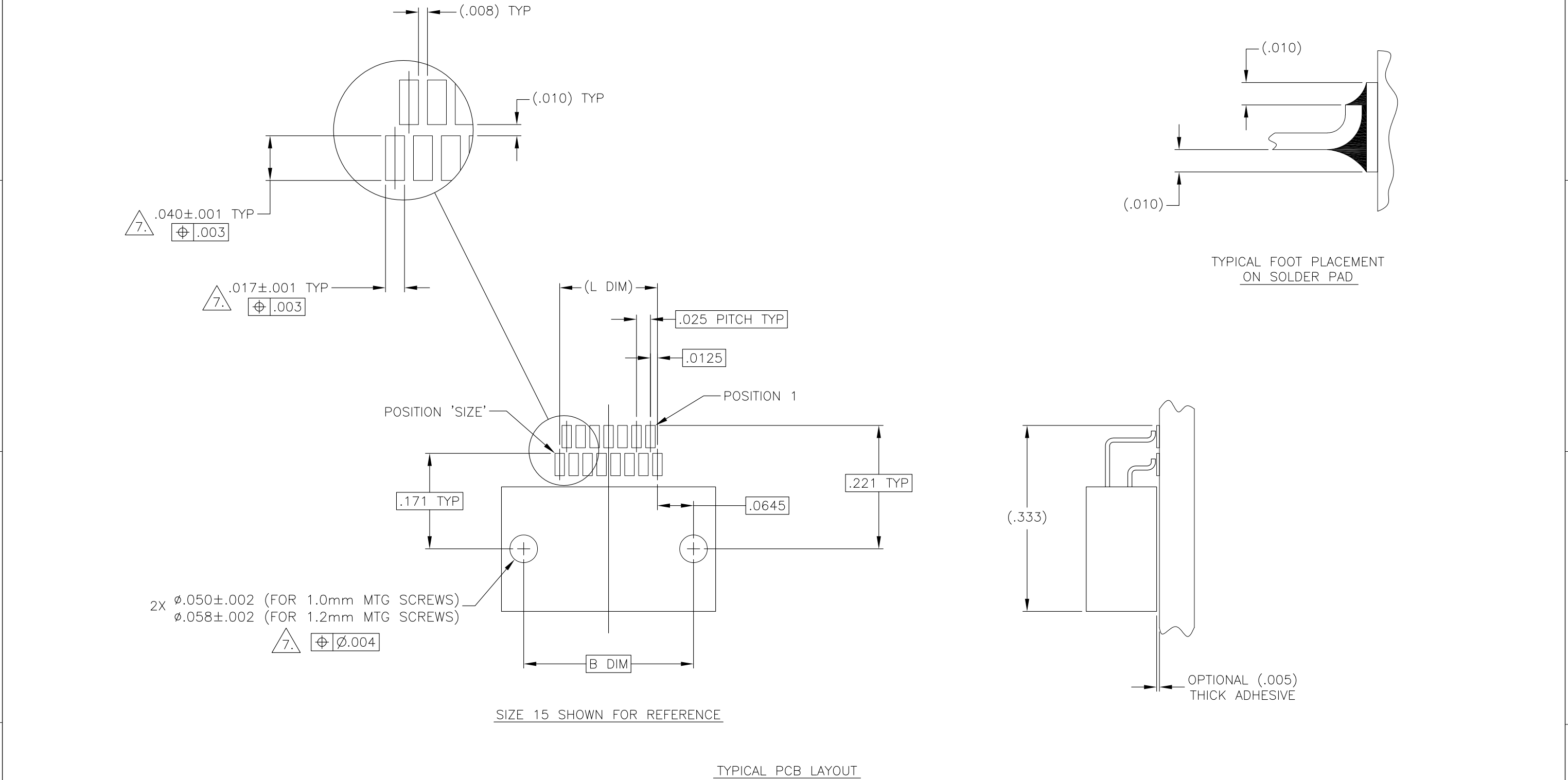
TE Connectivity

RECEPTACLE ASSEMBLY, HORIZONTAL SURFACE  
MOUNT, TWO ROW DUALLOBE,  
PLASTIC OR METAL

SIZE A2  
CAGE CODE 00779  
DRAWING NO C=1589483  
SCALE 8:1  
SHEET 1 of 2  
REV U2

RESTRICTED TO -

1471-9 (3/11)



7. POSITIONAL TOLERANCES FOR BASIC DIMENSIONED FEATURES ARE RELATIVE TO FIDUCIALS OR SOME SIMILAR DATUM REFERENCE DEFINED BY THE PCB DESIGNER.

THIS DRAWING IS A CONTROLLED DOCUMENT.		DWN M. STORRY 15 FEB 01	TE Connectivity	
DIMENSIONS: INCHES		CHK S. KAIN 15 FEB 01	NAME	
TOLERANCES UNLESS OTHERWISE SPECIFIED:		APVD —	RECEPTACLE ASSEMBLY, HORIZONTAL SURFACE MOUNT, TWO ROW DUALLOBE, PLASTIC OR METAL	
0 PLC ± — 1 PLC ± — 2 PLC ± — 3 PLC ± — 4 PLC ± — ANGLES ± —		PRODUCT SPEC —	SIZE A2	CAGE CODE 00779
MATERIAL —		APPLICATION SPEC —	DRAWING NO C=1589483	RESTRICTED TO —
FINISH —		WEIGHT —	SCALE 8:1	SHEET 2 OF 2
		CUSTOMER DRAWING	REV U2	

# Mouser Electronics

Authorized Distributor

Click to View Pricing, Inventory, Delivery & Lifecycle Information:

[TE Connectivity:](#)

[STL009L2DQ](#)