

This exploded view diagram illustrates the assembly of a mechanical component, likely a valve or actuator. The central part is a main body (46) which houses internal mechanisms. Key components include:

- Top Assembly:** Consists of a cap (39), a seal (45), and a mounting bracket (50). A dimension of 3.25 [±.128 IN] is indicated for the height of the top section.
- Internal Components:** Includes a piston rod (20) with a seal (57), a spring (27), and various guides and pins (e.g., 1, 2, 3, 4, 5, 19, 21, 22, 23, 24, 25, 26, 28, 29, 30, 31, 32, 33, 34).
- Bottom Assembly:** Features a base plate (61), a mounting bracket (66), and a series of pins and washers (e.g., 54, 55, 56, 59, 60, 63).

The diagram uses standard engineering conventions, including dashed lines to show hidden features and arrows to indicate assembly direction. Reference labels like "REF" are used to point to specific parts or sections.

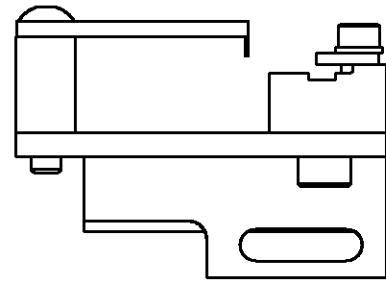
VIEW B ROTATED 180°


POST FEED 40 mm STROKE	POST FEED 30 mm STROKE	PRE FEED 30 mm STROKE	PRE FEED 40 mm STROKE

LOC  
A  
DIST  
66

44 (REF) 49 47 48

ON INSTALLATION, SET WIRE  
DISC TO LARGEST WIRE SIZE  
SETTING. USE OF SETTINGS  
BELOW MIN REQUIRED CRIMP  
HEIGHT SETTING WILL CAUSE  
DAMAGE TO CRIMP TOOLING.



QTY READ PER ASSY				PARTS LIST			
DIMENSIONS: mm [INCHES] DO NOT SCALE PRINT. TOLERANCES UNLESS OTHERWISE SPECIFIED: 1 PLC DEC +- 2 PLC DEC +- 3 PLC DEC +- ANGLES +- SURF TEXTURE: <input checked="" type="checkbox"/>		MATL		HT TR		FIN	
		-		-		-	
		-		-		-	
		-		-		-	
DR 245EP04 APP 245EP04 M.CLIFFORD F.BACKHURST CHK - REL 04-10-04 M.CLIFFORD				Tyco Electronics Harrisburg, PA 17105-3608			
NAME		FINE ADJ SIDE FD HD-I APPL				MACHINE REF HD-I APPL	
SCALE		D		DWG NO		1528444	
-		-		-		-	
-		-		-		-	
REMOVE BURRS, BREAK SHARP EDGES RO.38 MAX						SHEET 1 of 1 REV A	
CASE CODE 00779		CUSTOMER AND ASSEMBLY DRAWING					RESTRICTED TO
-		-					-

# Mouser Electronics

Authorized Distributor

Click to View Pricing, Inventory, Delivery & Lifecycle Information:

[TE Connectivity:](#)

[1528444-1](#)