

4

3

2

1

THIS DRAWING IS UNPUBLISHED.

RELEASED FOR PUBLICATION

© COPYRIGHT

ALL RIGHTS RESERVED.

LOC

DIST


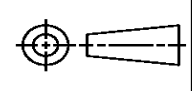
REVISIONS


P	LTR	DESCRIPTION	DATE	DWN	APVD
	H1	ECR-15-004848	27MAR2015	GK	HMR

REPLACED BY OCEAN STYLE APPLICATOR PART
NUMBER 2151225-1

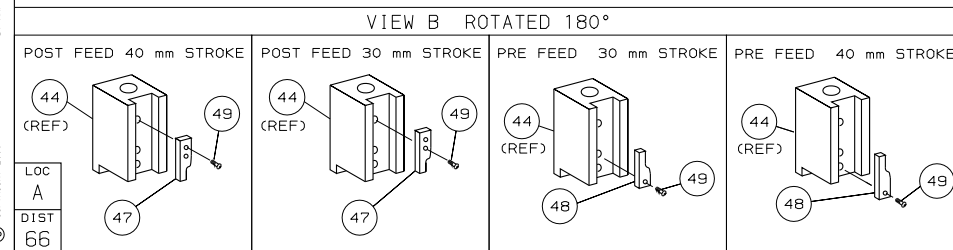
FOR REPLACEMENT PARTS FOR APPLICATOR 1528041
REFER TO ADDITIONAL PAGE(S). SPARE PARTS KIT (IF LISTED)
WILL REMAIN AVAILABLE.

THE REPLACEMENT OCEAN STYLE APPLICATOR HAS THE
SAME TERMINATOR/PRESS INTERFACE AS APPLICATOR
1528041

THIS DRAWING IS A CONTROLLED DOCUMENT.		DWN GOPALAKRISHNA HV		 TE Connectivity			
DIMENSIONS:		CHK RAGHAVENDRA					
		APVD RAGHAVENDRA		NAME FINE ADJ SIDE FD HD-I APPL			
		PRODUCT SPEC					
		APPLICATION SPEC					
MATERIAL		WEIGHT		SIZE A3	CAGE CODE	DRAWING NO C- 1528041	RESTRICTED TO
FINISH		CUSTOMER DRAWING		SCALE		SHEET 1 OF 2	REV H1



1. RECOMMENDED SPARE PARTS.
2. GREASE RAM, CAM, CAM FOLLOWER AND FEED ROD LIGHTLY.
3. LUBRICATE DAILY PER THE APPLICATOR INSTRUCTION SHEET SUPPLIED WITH THE APPLICATOR.



* WARNING:
ON INSTALLATION, SET WIRE DISC TO LARGEST WIRE SIZE
SETTING. USE OF SETTINGS BELOW MIN REQ'D CRIMP
HEIGHT SETTING WILL CAUSE DAMAGE TO CRIMP TOOLING.

	-	1	1	1	1	1	1	1528041	PRINT, APPLICATOR LOG SHEET	72
	-	1	1	1	1	1	1	1338705-3	DOCUMENTATION PACKAGE	71
										70
										69
										68
	-	1	1	1	1	1	1	461264-5	PLATE, IDENTIFICATION	67
	-	2	2	2	2	2	2	21017-2	SCR,DRIVE (#2x.19) ID PLATE	66
										65
										64
	-	1	1	1	1	1	1	3-18031-0	SCR,SKT SET (M6X6) RAM	63
										62
	-	2	2	2	2	2	2	1-18024-5	SCR,BHC (M5X25) DRAG	61
	-	1	1	1	1	1	1	18024-7	SCR,BHC (M4X10) ANVIL	60
	-	1	1	1	1	1	1	5-18022-2	SCR,HEX (M4XB) FEED FINGER	59
										58
										57
	-	1	1	1	1	1	1	1338685-1	PAWL, FEED	56
										55
	-	4	4	4	4	4	4	18024-8	SCR,BHC (M4x12) SHEAR HOLDER	54
										53
	-	1	1	1	1	1	1	18030-1	NUT, HEX (M3) HOLD DOWN	52
	-	1	1	1	1	1	1	811242-5	BUMPER, HOLDDOWN	51
	-	1	1	1	1	1	1	690753-2	SPACER, TONKER	50
	-	1	1	1	1	1	1	18024-3	SCR, BHC (M3X10) CAM	49
	-	-	1	-	-	1	-	1338675-1	CAM, PRE FEED 30 & 40 mm ST	48
	-	1	-	1	1	-	1	1338676-1	CAM, POST FEED 30 & 40 mm ST	47
	-	1	1	1	1	1	1	1320999-3	APPLICATOR BASIC SUBASSY	46
	-	1	1	1	1	1	1	690191-1	PLUG, NYLON	45
	-	1	1	1	1	1	1	1338660-1	RAM	44
										43
										42
	-	1	1	1	1	1	1	2-18024-6	SCR,BHC (M8X25) RAM	41
										40
	-	1	1	1	1	1	1	690125-1	SHIM SUBASSY	39
	-	1	1	1	1	1	1	469367-8	SPACER, FINE ADJUST	38
	-	1	1	1	1	1	1	879103-3	FINE ADJUST HEAD SUBASSY	37
										36
										35
	-	1	1	1	1	1	1	1424186-2	SUPPORT, TERMINAL	34
	-	2	2	2	2	2	2	1-18024-0	SCR,BHC (M4X20) STRIP GUIDE	33
	-	1	1	1	1	1	1	18027-2	WASHER, FLAT (M4)	32
	-	3	3	3	3	3	3	1-18023-2	SCR,SKT CAP (M4X12) MOUNT BLOCK	31
	-	1	1	1	1	1	1	1320908-3	SPACER, STRIP GUIDE	30
	-	1	1	1	1	1	1	1633073-1	STRIP GUIDE PLATE ASSY	29
	-	1	1	1	1	1	1	1-455888-0	SPACER, FRONT SHEAR DEP	28
	-	2	2	2	2	2	2	1-22284-0	SPRING, DRAG	27
	-	1	1	1	1	1	1	356835-1	LEVER, DRAG RELEASE	26
	-	1	1	1	1	1	1	240792-1	DRAG, TERMINAL	25
	-	1	1	1	1	1	1	1320928-2	PLATE, STRIP GUIDE	24
	-	1	1	1	1	1	1	980371-4	SCR,SHC SHLD	23
	-	1	-	1	1	-	1	690472-2	STRIPPER	22
	-	1	1	1	1	1	1	1-18023-1	SCR,SHC (M4X10) STRIPPER	21
	-	4	4	4	4	4	4	18025-2	WASHER, LOCK (M4) STRIPPER	20
	-	-	1	-	-	1	-	1424364-1	STRIPPER WIRE STOP ASSY	19
										18
↑	-	1	-	-	1	-	-	1338684-1	HOLDER, SHEAR, FRONT (NO-CUT)	17
										16
										15
										14
										13
	-	1	1	1	1	1	1	5-22280-0	SPRING, SHEAR	12
	-	1	1	1	1	1	1	356885-4	STOP, SHEAR	11
↑	-	-	1	1	-	1	1	1320921-1	HOLDER, SHEAR, FRONT (CUT)	10
↑	-	1	1	1	1	1	1	454276-1	SHEAR, FLOAT (FRONT)	9
↑	1	2	2	2	1	1	1	3-1333201-0	ANVIL	8
										7
										6
	-	1	1	1	1	1	1	455889-9	DEPRESSOR, SHEAR (FRONT)	5
	-	1	1	1	1	1	1	1-238011-7	SPACER, BLOCK CRIMPER	4
↑	1	2	2	2	1	1	1	2-456134-9	CRIMPER, INSULATION	3
↑	-	1	1	1	1	1	1	455888-3	SPACER, CRIMPER	2
	1	2	2	2	1	1	1	1-456402-0	CRIMPER, WIRE	1
	-77	-76	-72	-71	-6	-2	-1	PART NO	DESCRIPTION	ITEM NO
								← REVISION OF EACH ASSY NO (WHEN BLANK, USE DWG REVISION)		
								QTY REQD PER ASSY		PARTS LIST
								DIMENSIONS, mm [INCHES]	MATL	
								DO NOT SCALE PRINT.		
								TOLERANCES UNLESS OTHERWISE SPECIFIED.		
								1 PLC DEC ±0.5 (.02 IN)		
								3 PLC DEC ±-		
								ANGLES ±-		
								DR L.LOFTHOUSE	22AUG01	APP F.BACKHURST
								CHK -	REL 26SEP01	L.LOFTHOUSE
								NAME	FINE ADJ SIDE FD HD-I APPL	MACHINE REF
								SCALE -	DWG NO 1528041	HD-I APPL

Mouser Electronics

Authorized Distributor

Click to View Pricing, Inventory, Delivery & Lifecycle Information:

[TE Connectivity:](#)

[1528041-2](#)