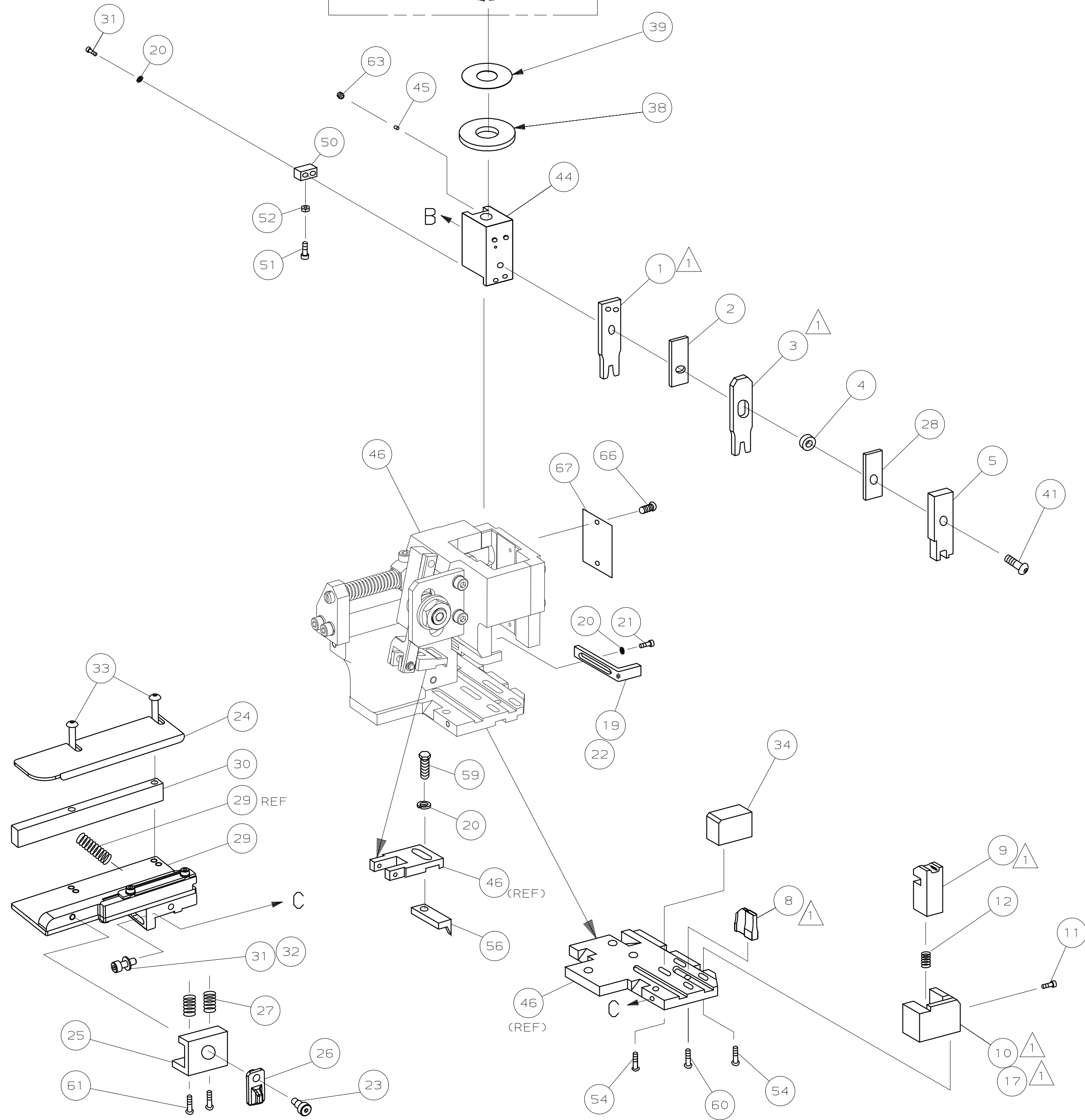
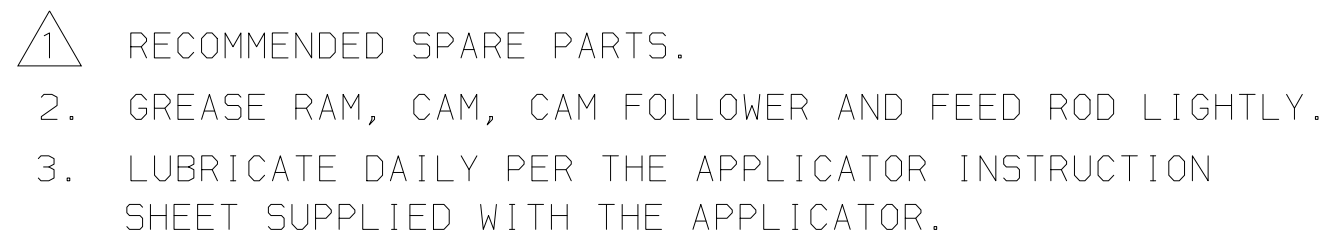
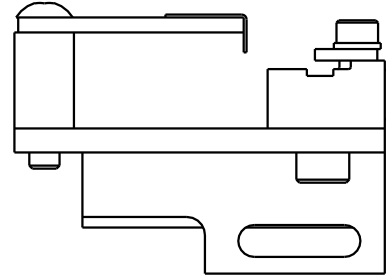


[illegible]


VIEW B ROTATED 180°

POST FEED 40 mm STROKE	POST FEED 30 mm STROKE	PRE FEED 30 mm STROKE	PRE FEED 40 mm STROKE

* WARNING:
ON INSTALLATION, SET WIRE DISC TO LARGEST WIRE SIZE
SETTING. USE OF SETTINGS BELOW MIN REQ'D CRIMP
HEIGHT SETTING WILL CAUSE DAMAGE TO CRIMP TOOLING.



P	F	C LTR	ECR-06-003689 REVISION RECORD	RK APP	FEBOE DATE	

DIMENSIONS: mm (INCHES)		MAT'L		HT TR		FIN	
DO NOT SCALE PRINT.		-		-		-	
TOLERANCES UNLESS OTHERWISE SPECIFIED:		DR 08AUG01		APP 08AUG01			
1 PLC DEC ±0.5 [0.2 IN]		L.L.OFHOUSE		F.BACHURST		 AMP Incorporated Harrisburg, PA 17105-3608	
2 PLC DEC ±		CHK -		REL 12SEP01			
3 ANGLE ±				L.L.OFHOUSE			
SURF TEXTURE: ✓		NAME SIDE FEED HD-1 F/ADJ APPL				MACHINE REF	
REMOVE BURRS, BREAK SHARP EDGES RO.3R MAX		SCALE -				HD-1 APPL	
		D		DWG NO 1528039		SHEET 1 of 1	
						REV C	

	-	1	1	1	1	1	1	1528039	PRINT, APPLICATOR LOG SHEET	73
	-	1	1	1	1	1	1	1338705-3	DOCUMENTATION PACKAGE	72
										71
										70
										69
										68
	-	1	1	1	1	1	1	461264-5	PLATE, IDENTIFICATION	67
	-	2	2	2	2	2	2	21017-2	SCR,DRIVE (#2x.19) ID PLATE	66
										65
										64
	-	1	1	1	1	1	1	3-18031-0	SCR,SKT SET (M6X6) RAM	63
										62
	-	2	2	2	2	2	2	1-18024-5	SCR,BHC (M5X25) DRAG	61
	-	1	1	1	1	1	1	18024-7	SCR,BHC (M4X10) ANVIL	60
	-	1	1	1	1	1	1	5-18022-2	SCR,HEX (M4X8) FEED FINGER	59
										58
										57
	-	1	1	1	1	1	1	1338685-1	PAWL, FEED	56
										55
	-	4	4	4	4	4	4	18024-8	SCR,BHC (M4x12) SHEAR HOLDER	54
										53
	-	1	1	1	1	1	1	18030-1	NUT, HEX (M3) HOLD DOWN	52
	-	1	1	1	1	1	1	811242-5	BUMPER, HOLDDOWN	51
	-	1	1	1	1	1	1	690753-2	SPACER, TONKER	50
	-	1	1	1	1	1	1	18024-3	SCR,BHC (M3X10) CAM	49
	-	-	1	-	-	1	-	1338675-1	CAM, PRE FEED 30 & 40 mm ST	48
	-	1	-	1	1	-	1	1338676-1	CAM, POST FEED 30 & 40 mm ST	47
	-	1	1	1	1	1	1	1320999-3	APPLICATOR BASIC SUBASSY	46
	-	1	1	1	1	1	1	690191-1	PLUG, NYLON	45
	-	1	1	1	1	1	1	1338660-1	RAM	44
										43
										42
	-	1	1	1	1	1	1	2-18024-6	SCR,BHC (M8X25) RAM	41
										40
	-	1	1	1	1	1	1	690125-1	SHIM SUBASSY	39
	-	1	1	1	1	1	1	469367-1	SPACER, FINE ADJUST	38
	-	1	1	1	1	1	1	879103-2	FINE ADJUST HEAD SUBASSY	37
										36
										35
	-	1	1	1	1	1	1	1320934-1	SUPPORT, TERMINAL	34
	-	2	2	2	2	2	2	1-18024-0	SCR,BHC (M4X20) STRIP GUIDE	33
	-	1	1	1	1	1	1	18027-2	WASHER, FLAT (M4)	32
	-	3	3	3	3	3	3	1-18023-2	SCR,SKT CAP (M4X12) MOUNT BLOCK	31
	-	1	1	1	1	1	1	1320908-6	SPACER, STRIP GUIDE	30
	-	1	1	1	1	1	1	1633073-1	STRIP GUIDE PLATE ASSY	29
	-	1	1	1	1	1	1	1-455888-4	SPACER, FRONT SHEAR DEP	28
	-	2	2	2	2	2	2	1-22284-0	SPRING, DRAG	27
	-	1	1	1	1	1	1	356835-1	LEVER, DRAG RELEASE	26
	-	1	1	1	1	1	1	240792-1	DRAG, TERMINAL	25
	-	1	1	1	1	1	1	1320928-1	PLATE, STRIP GUIDE	24
	-	1	1	1	1	1	1	980371-4	SCR,SHC SHLD	23
	-	1	-	1	1	-	1	690472-2	STRIPPER	22
	-	1	1	1	1	1	1	1-18023-1	SCR,SHC (M4X10) STRIPPER	21
	-	4	4	4	4	4	4	18025-2	WASHER, LOCK (M4) STRIPPER	20
	-	-	1	-	-	1	-	690472-1	STRIPPER	19

Mouser Electronics

Authorized Distributor

Click to View Pricing, Inventory, Delivery & Lifecycle Information:

[TE Connectivity:](#)

[1528039-2](#)