

4

3

2

1

THIS DRAWING IS UNPUBLISHED.

RELEASED FOR PUBLICATION

© COPYRIGHT

ALL RIGHTS RESERVED.

LOC

DIST


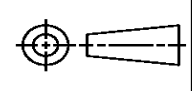
REVISIONS

P	LTR	DESCRIPTION	DATE	DWN	APVD
	H1	ECR-14-003108	03MAR2014	GK	HMR

REPLACED BY OCEAN STYLE APPLICATOR PART  
NUMBER 2151268-1

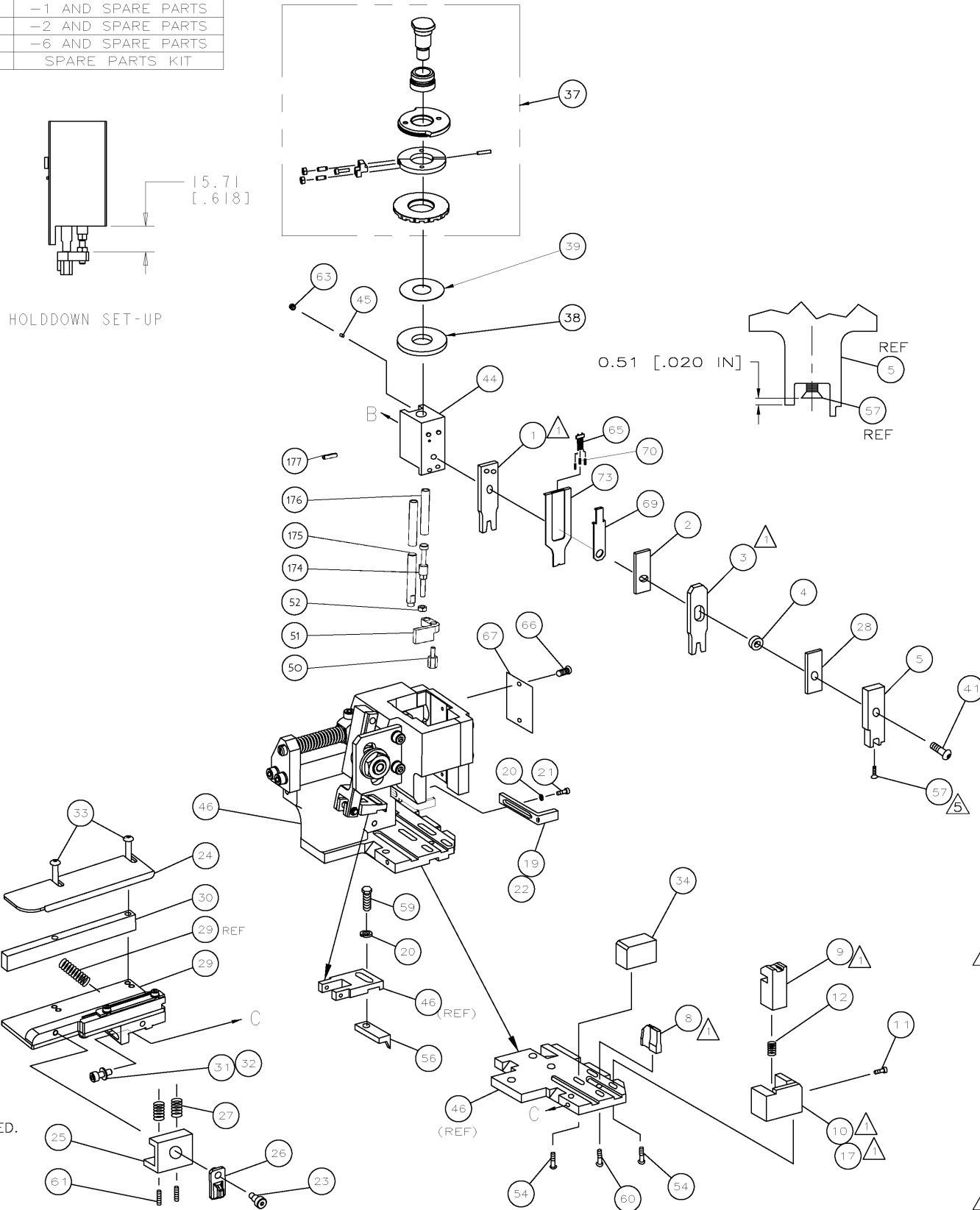
FOR REPLACEMENT PARTS FOR APPLICATOR 1528027  
REFER TO ADDITIONAL PAGE(S). SPARE PARTS KIT (IF LISTED)  
WILL REMAIN AVAILABLE.

THE REPLACEMENT OCEAN STYLE APPLICATOR HAS THE  
SAME TERMINATOR/PRESS INTERFACE AS APPLICATOR  
1528027

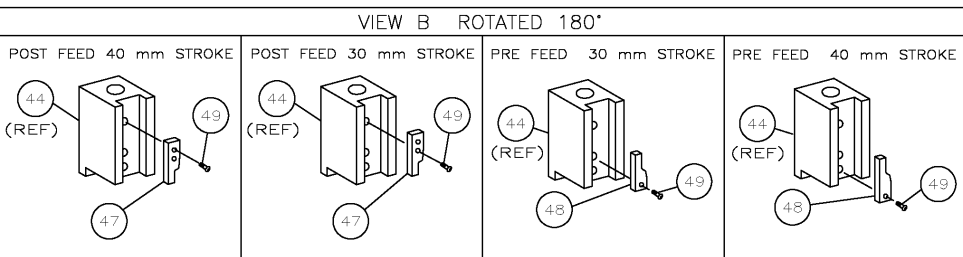
THIS DRAWING IS A CONTROLLED DOCUMENT.		DWN	GOPALAKRISHNA HV		 TE Connectivity	
DIMENSIONS:		CHK	RAGHAVENDRA			
		APVD	RAGHAVENDRA		NAME SIDE FEED HD-I F/ADJ APPL	
		PRODUCT SPEC				
		APPLICATION SPEC				
MATERIAL		WEIGHT	SIZE	CAGE CODE	DRAWING NO	RESTRICTED TO
FINISH			A3		©- 1528027	
CUSTOMER DRAWING				SCALE	SHEET 1 OF 2	REV H1

LOC	DIST	REVISIONS					
A	66	P	LTR	DESCRIPTION	DATE	DWN	APVD
			H	ECR-11-017641	26AUG2011	LZ	SX

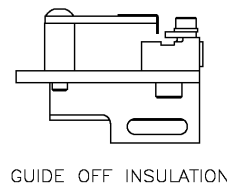
PART NUMBER	REV	FIRST USED	TERMINATOR	FEED TYPE	DESCRIPTION
1528027-1	H	-	LEADMAKER	MECH POST FEED	CUTS CARRIER
1528027-2	H	-	BENCH	MECH PRE FEED	CUTS CARRIER
1528027-6	H	-	LEADMAKER	MECH POST FEED	CONTINUOUS CARRIER
7-1528027-1	H	-	LEADMAKER	MECH POST FEED	-1 AND SPARE PARTS
7-1528027-2	H	-	BENCH	MECH PRE FEED	-2 AND SPARE PARTS
7-1528027-6	H	-	LEADMAKER	MECH POST FEED	-6 AND SPARE PARTS
7-1528027-7	A	-	-	-	SPARE PARTS KIT

[illegible]

	1	1	1	1		1	1	993111-8	PIN, SLOTTED SPRING 3.0X12.0	177
	2	2	2	2	2	2		3-22280-7	SPRING, COMPRESSION	176
	1	1	1	1	1	1		1752353-1	GUIDE PIN, HOLD DOWN	175
	1	1	1	1	1	1		1901680-1	GUIDE PIN, HOLD DOWN	174
	1	1	1	1	1	1		1490525-3	DEPRESSOR, WIRE	73
	1	1	1	1	1	1		1528027	PRINT, APPLICATOR LOG SHEET	72
	1	1	1	1	1	1		1338705-3	DOCUMENTATION PACKAGE	71
	3	3	3	3	3	3		1-23147-4	SPRING, DEPRESSOR	70
	1	1	1	1	1	1		1490524-1	SPACER, DEPRESSOR	69
	1	1	1	1	1	1		461264-5	PLATE, IDENTIFICATION	67
	2	2	2	2	2	2		21017-2	SCR,DRIVE(#2x.19)ID PLATE	66
	1	1	1	1	1	1		1424350-1	HOLDER, PIN, WIRED	65
	1	1	1	1	1	1		3-18031-0	SCR,SKT SET(M6X6)RAM	63
	2	2	2	2	2	2		2-18032-5	SCR,SET(M5X20)DRAG	6
	1	1	1	1	1	1		18024-7	SCR,BHC(M4X10)ANVIL	60
	1	1	1	1	1	1		5-18022-2	SCR,HEX(M4X8)FEED FINGER	59
										58
	1	1	1	1	1	1		985575-3	SCR,FHC(M3X10)DEP	57
	1	1	1	1	1	1		1338685-1	PAWL, FEED	56
										55
	4	4	4	4	4	4		18024-8	SCR,BHC(M4x12)SHEAR HOLDER	54
										53
	1	1	1	1	1	1		1-18030-0	NUT, HEX, REG M3.5	52
	1	1	1	1	1	1		1901681-1	HOLD DOWN, TERMINAL	51
	1	1	1	1	1	1		2-1752354-5	STANDOFF, HOLD-DOWN	50
	1	1	1	1	1	1		18024-3	SCR,BHC(M3X10)CAM	49
	-	1	-	-	1	-		1338675-1	CAM, PRE FEED 30 & 40 mm ST	48
	1	-	1	1	-	1		1338676-1	CAM, POST FEED 30 & 40 mm ST	47
	1	1	1	1	1	1		1320999-3	APPLICATOR BASIC SUBASSY	46
	1	1	1	1	1	1		690191-1	PLUG, NYLON	45
	1	1	1	1	1	1		1633724-1	RAM	44
										43
										42
	1	1	1	1	1	1		2-18024-6	SCR,BHC(M8X25)RAM	41
										40
	1	1	1	1	1	1		690125-1	SHIM SUBASSY	39
	1	1	1	1	1	1		469367-8	SPACER, FINE ADJUST	38
	1	1	1	1	1	1		879103-2	FINE ADJUST HEAD SUBASSY	37
										36
										35
	1	1	1	1	1	1		1-1752356-7	SUPPORT, TERMINAL	34
	2	2	2	2	2	2		1-18024-0	SCR,BHC(M4X20)STRIP GUIDE	33
	1	1	1	1	1	1		18027-2	WASHER, FLAT(M4)	32
	1	1	1	1	1	1		1-18023-2	SCR,SKT CAP(M4X12)MOUNT BLOCK	31
	1	1	1	1	1	1		1320908-1	SPACER, STRIP GUIDE	30
	1	1	1	1	1	1		1633073-1	STRIP GUIDE PLATE ASSY	29
	1	1	1	1	1	1		1-455888-6	SPACER, FRONT SHEAR DEP	28
	2	2	2	2	2	2		1-22284-0	SPRING, DRAG	27
	1	1	1	1	1	1		356835-1	LEVER, DRAG RELEASE	26
	1	1	1	1	1	1		240792-1	DRAG, TERMINAL	25
	1	1	1	1	1	1		1320928-1	PLATE, STRIP GUIDE	24
	1	1	1	1	1	1		980371-4	SCR,SHC SHLD	23
	1	-	1	1	-	1		690472-2	STRIPPER	22
	1	1	1	1	1	1		1-18023-1	SCR,SHC(M4X10)STRIPPER	21
	2	2	2	2	2	2		18025-2	WASHER,LOCK(M4)STRIPPER	20
	-	-	1	-	-	1	-	690472-1	STRIPPER	19
1	-	1	-	-	1	-	-	1338684-2	HOLDER, SHEAR, FRONT (NO-CUT)	18
										16
										15
										14
										13
	1	1	1	1	1	1		3-22280-3	SPRING, SHEAR	12
	1	1	1	1	1	1		356885-5	STOP, SHEAR	11
	-	-	1	1	-	1	1	1-1320921-0	HOLDER, SHEAR, FRONT (CUT)	10
	1	1	1	1	1	1		318707-1	SHEAR, FLOAT (FRONT)	9
	1	2	2	2	1	1	1	1333202-9	ANVIL	8
										7
										6
	1	1	1	1	1	1		1338680-2	DEPRESSOR, SHEAR (FRONT)	5
	1	1	1	1	1	1		238011-2	SPACER, BLOCK CRIMPER	4
1	1	2	2	2	1	1	1	3-456135-7	CRIMPER, INSULATION	3
	1	1	1	1	1	1		455888-3	SPACER, CRIMPER	2
1	1	2	2	2	1	1	1	1-456403-3	CRIMPER, WIRE	1
-77	-76	-72	-71	-6	-2	-1		PART NO	DESCRIPTION	ITEM NO
								PARTS LIST		
								QTY REQD PER ASSY		



\* **WARNING:**  
ON INSTALLATION, SET WIRE DISC TO LARGEST WIRE SIZE  
SETTING. USE OF SETTINGS BELOW MIN REQ'D CRIMP  
HEIGHT SETTING WILL CAUSE DAMAGE TO CRIMP TOOLING.



# Mouser Electronics

Authorized Distributor

Click to View Pricing, Inventory, Delivery & Lifecycle Information:

[TE Connectivity:](#)

[1528027-1](#)