

4

3

2

1

THIS DRAWING IS UNPUBLISHED.

RELEASED FOR PUBLICATION

© COPYRIGHT

ALL RIGHTS RESERVED.

LOC

DIST

REVISIONS

P	LTR	DESCRIPTION	DATE	DWN	APVD

D

C

B

A

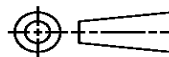
REPLACED BY OCEAN STYLE APPLICATOR PART NUMBER

FOR REPLACEMENT PARTS FOR APPLICATOR REFER TO ADDITIONAL PAGE(S). SPARE PARTS KIT (IF LISTED) WILL REMAIN AVAILABLE.

THE REPLACEMENT OCEAN STYLE APPLICATOR HAS THE SAME TERMINATOR/PRESS INTERFACE AS APPLICATOR

THIS DRAWING IS A CONTROLLED DOCUMENT.

DIMENSIONS:



TOLERANCES UNLESS OTHERWISE SPECIFIED:

0 PLC	±
1 PLC	±
2 PLC	±
3 PLC	±
4 PLC	±
ANGLES	±

MATERIAL

FINISH

DWN

CHK

APVD

PRODUCT SPEC

APPLICATION SPEC

WEIGHT

TE Connectivity

NAME

SIZE

CAGE CODE

DRAWING NO

RESTRICTED TO

A3

C-

SCALE

SHEET OF

REV

1470-19 (3/11)

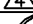

Pro/ENGINEER DRAWING

DRAWING MADE IN THIRD ANGLE PROJECTION

PART NUMBER	REV	FIRST USED	TERMINATOR	FEED TYPE	DESCRIPTION
1528025-1	K	-	LEADMAKER	MECH POST FEED	CUTS CARRIER
1528025-2	K	-	BENCH	MECH PRE FEED	CUTS CARRIER
1528025-6	K	-	LEADMAKER	MECH POST FEED	CONTINUOUS CARRIER
7-1528025-1	K	-	LEADMAKER	MECH POST FEED	-1 AND SPARE PARTS
7-1528025-2	K	-	BENCH	MECH PRE FEED	-2 AND SPARE PARTS
7-1528025-6	K	-	LEADMAKER	MECH POST FEED	-6 AND SPARE PARTS
7-1528025-7	D	-	-	-	SPARE PARTS KIT

CRIMP DATA (AMP TERMINAL)

TERMINAL NAME: JUNIOR POWER TIMER CONTACT A


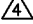
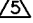
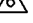
CRIMP	SIZE	TYPE	RANGE
WIRE	1.57 [.062 IN]	F	0.20-0.50mm ²
INSUL	3.94 [.155 IN]	0	3.4 MAX [.134 IN] 
WIRE STRIP LENGTH	3.2-3.8 [.126-.150 IN]	APPL INSTRUCTION 408-8322 & 408-8490 	

TERMINAL	114-18050 (A)	-	FEED
APPL SPEC	114-18051 (B)	-	14.0 [.551 IN]

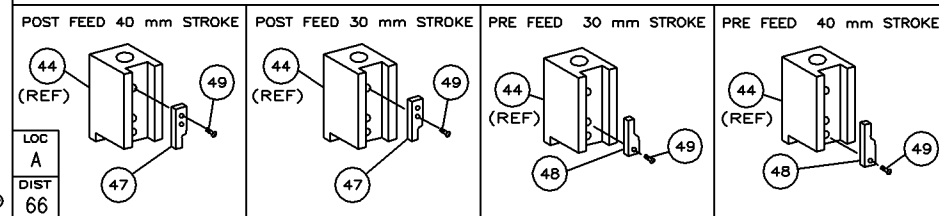
TERMINALS APPLIED

TERMINAL	SEAL	SEAL	-	-
964282 (A)	963293	963294	-	-
964298 (B)	963293	963294	-	-
1241864 (A)	-	-	-	-
2141894 (A)	-	-	-	-
2141876 (B)	-	-	-	-
-	-	-	-	-
-	-	-	-	-

WIRE SIZE mm ² AWG	CRIMP HEIGHT *	REF SETTING
0.50mm ²	1.12 ±0.03 [.044 ±0.01 IN]	B 4
0.35mm ²	1.08 ±0.03 [.043 ±0.01 IN]	B 6
0.35mm ²	1.05 ±0.03 [.041 ±0.01 IN]	B 9
0.25mm ²	1.00 ±0.03 [.039 ±0.01 IN]	C 3
0.20mm ²	0.98 ±0.03 [.039 ±0.01 IN]	C 3
-	-	-
-	-	-
-	-	-
-	-	-
-	-	-
-	-	-
-	-	-
-	-	-
-	-	-

-  RECOMMENDED SPARE PARTS.
2. GREASE RAM, CAM, CAM FOLLOWER AND FEED ROD LIGHTLY.
3. LUBRICATE DAILY PER THE APPLICATOR INSTRUCTION SHEET SUPPLIED WITH THE APPLICATOR.
-  THIS APPLICATOR APPLIES TERMINAL WITH A SEAL. INSULATION DIA QUOTED IS OUTSIDE DIAMETER OF SEAL. WIRE INSULATION DIA IS DEPENDENT ON SEAL BEING APPLIED.
-  APPLY TORQ-SEAL IN ALLEN SOCKET TO FILL HOLE AFTER FLAT HD HAS BEEN ADJUSTED TO CORRECT HEIGHT AT QUALIFICATION. APPLY #1-23419-5 LOC-TITE TO THREADS.
-  ON TERMINAL 2141894 AND 2141876 SHOULD USE THE CRIMP HEIGHT: 1.08±0.03 FOR WIRE 0.35mm². PLS. REFER TO THE TERMINAL APPLICATOR INSTRUCTION.

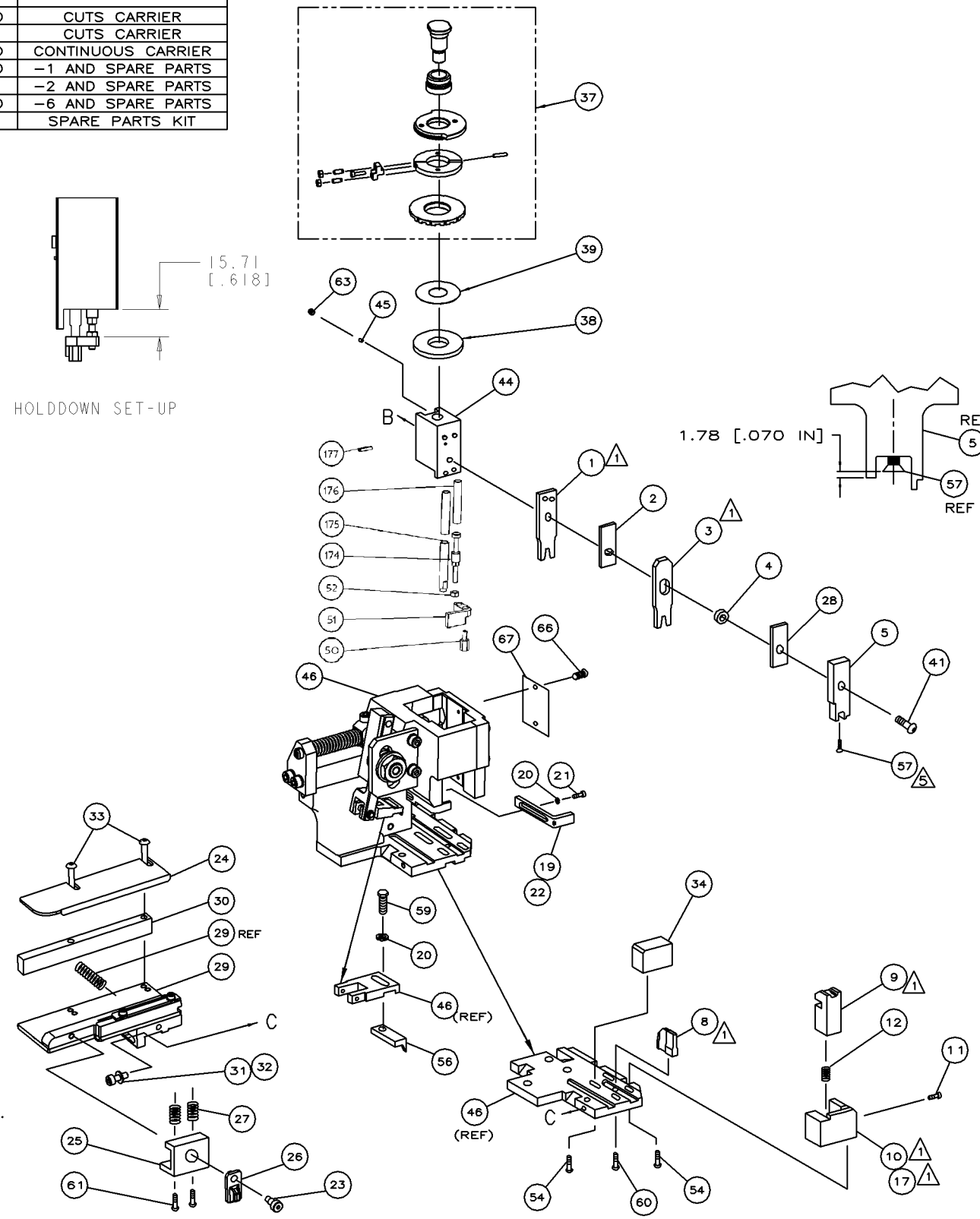
VIEW B ROTATED 180°



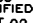
*** WARNING:**
ON INSTALLATION, SET WIRE DISC TO LARGEST WIRE SIZE SETTING. USE OF SETTINGS BELOW MIN REQ'D CRIMP HEIGHT SETTING WILL CAUSE DAMAGE TO CRIMP TOOLING.

GUIDE OFF
INSULATION BARREL

HOLDDOWN SET-UP



-	1	1	1	1	1	1	993111-8	PIN,SLOTTED SPRING 3.0X12.0	177
-	2	2	2	2	2	2	3-22280-7	SPRING,COMPRESSION	176
-	1	1	1	1	1	1	1752353-1	GUIDE PIN,HOLDDOWN	175
-	1	1	1	1	1	1	1901680-1	GUIDE PIN,HOLDDOWN	174
-	1	1	1	1	1	1	1528025	PRINT, APPLICATOR LOG SHEET	72
-	1	1	1	1	1	1	1338705-3	DOCUMENTATION PACKAGE	71
-	1	1	1	1	1	1	461264-5	PLATE, IDENTIFICATION	67
-	2	2	2	2	2	2	21017-2	SCR,DRIVE(#2x.19)ID PLATE	66
-	-	-	-	-	-	-	-	-	65
-	-	-	-	-	-	-	-	-	64
-	1	1	1	1	1	1	3-18031-0	SCR,SKT SET(M6X6 LW)RAM	63
-	-	-	-	-	-	-	-	-	62
-	2	2	2	2	2	2	2-18032-5	SCR,SOC SET(M5X20)DRAG	61
-	1	1	1	1	1	1	18024-7	SCR,BHC(M4X10)ANVIL	60
-	1	1	1	1	1	1	5-18022-2	SCR,HEX(M4X8)FEED FINGER	59
-	-	-	-	-	-	-	-	-	58
-	1	1	1	1	1	1	985575-3	SCR,FHC(M3X10)DEP	57
-	1	1	1	1	1	1	1338685-1	PAWL, FEED	56
-	-	-	-	-	-	-	-	-	55
-	4	4	4	4	4	4	18024-8	SCR,BHC(M4X12)SHEAR HOLDER	54
-	-	-	-	-	-	-	-	-	53
-	1	1	1	1	1	1	1-18030-0	NUT,HEX,REG M3.5	52
-	1	1	1	1	1	1	1901681-1	HOLD-DOWN,TERMINAL	51
-	1	1	1	1	1	1	2-1752354-3	STANDOFF,HOLD-DOWN	50
-	1	1	1	1	1	1	18024-3	SCR,BHC(M3X10)CAM	49
-	-	-	-	-	-	-	1338675-1	CAM, PRE FEED 30 & 40 mm ST	48
-	1	-	1	1	1	1	1338676-1	CAM, POST FEED 30 & 40 mm ST	47
-	1	1	1	1	1	1	1320999-3	APPLICATOR BASIC SUBASSY	46
-	1	1	1	1	1	1	690191-1	PLUG, NYLON	45
-	1	1	1	1	1	1	1633724-1	RAM	44
-	-	-	-	-	-	-	-	-	43
-	-	-	-	-	-	-	-	-	42
-	1	1	1	1	1	1	2-18024-6	SCR,BHC(M8X25)RAM	41
-	-	-	-	-	-	-	-	-	40
-	1	1	1	1	1	1	690125-1	SHIM SUBASSY	39
-	1	1	1	1	1	1	469367-8	SPACER, FINE ADJUST	38
-	1	1	1	1	1	1	879103-3	FINE ADJUST HEAD SUBASSY	37
-	-	-	-	-	-	-	-	-	36
-	-	-	-	-	-	-	-	-	35
-	1	1	1	1	1	1	1-1752356-3	SUPPORT, TERMINAL	34
-	2	2	2	2	2	2	1-18024-0	SCR,BHC(M4X20)STRIP GUIDE	33
-	1	1	1	1	1	1	18027-2	WASHER, FLAT(M4)	32
-	1	1	1	1	1	1	1-18023-2	SCR,SKT CAP(M4X12)MOUNT BLOCK	31
-	1	1	1	1	1	1	1320908-1	SPACER, STRIP GUIDE	30
-	1	1	1	1	1	1	1633073-2	STRIP GUIDE PLATE ASSY	29
-	1	1	1	1	1	1	1-455888-4	SPACER, FRONT SHEAR DEP	28
-	2	2	2	2	2	2	1-22284-0	SPRING, DRAG	27
-	1	1	1	1	1	1	356835-1	LEVER, DRAG RELEASE	26
-	1	1	1	1	1	1	240792-1	DRAG, TERMINAL	25
-	1	1	1	1	1	1	1320928-3	PLATE, STRIP GUIDE	24
-	1	1	1	1	1	1	980371-4	SCR,SHC SHLD	23
-	1	-	1	1	1	1	690472-2	STRIPPER	22
-	1	1	1	1	1	1	1-18023-1	SCR,SHC(M4X10)STRIPPER	21
-	2	2	2	2	2	2	18025-2	WASHER,LOCK(M4)STRIPPER	20
-	-	1	-	-	1	-	690472-1	STRIPPER	19
-	-	-	-	-	-	-	-	-	18
-	1	-	-	1	-	-	1338684-2	HOLDER, SHEAR, FRONT (NO-CUT)	17
-	-	-	-	-	-	-	-	-	16
-	-	-	-	-	-	-	-	-	15
-	-	-	-	-	-	-	-	-	14
-	-	-	-	-	-	-	-	-	13
-	1	1	1	1	1	1	3-22280-3	SPRING, SHEAR	12
-	1	1	1	1	1	1	356885-5	STOP, SHEAR	11
-	-	1	1	-	1	1	1-1320921-0	HOLDER, SHEAR, FRONT (CUT)	10
-	1	1	1	1	1	1	318707-1	SHEAR, FLOAT (FRONT)	9
-	1	2	2	2	1	1	1333202-3	ANVIL	8
-	-	-	-	-	-	-	-	-	7
-	-	-	-	-	-	-	-	-	6
-	1	1	1	1	1	1	1338680-2	DEPRESSOR, SHEAR (FRONT)	5
-	1	1	1	1	1	1	238011-4	SPACER, BLOCK CRIMPER	4
-	1	2	2	2	1	1	2-904741-1	CRIMPER, INSULATION	3
-	1	1	1	1	1	1	1-455888-0	SPACER, CRIMPER	2
-	1	2	2	2	1	1	1-456403-3	CRIMPER, WIRE	1
-	-77	-76	-72	-71	-6	-2	-1	PART NO	ITEM NO
-	-	-	-	-	-	-	-	REVISION OF EACH ASSY NO. (WHEN BLANK, USE DWG REVISION)	A

QTY REQD PER ASSY				PARTS LIST			
MATL	-	HT TR	-	FIN	-	-	-
DIMENSIONS: mm [INCHES] DO NOT SCALE PRINT.							
TOLERANCES UNLESS OTHERWISE SPECIFIED:							
2 PLC DEC ±0.5 [.02 IN]							
3 PLC DEC ±-							
4 PLC DEC ±-							
ANGLES ±-							
SURF TEXTURE: 							
REMOVE BURRS, BREAK SHARP EDGES R0.38 MAX							
DATE CODE 00779							
CUSTOMER AND ASSEMBLY DRAWING							

THIS DRAWING IS A CONTROLLED DOCUMENT.

LAYOUT
L1426011SET UP GAGE
458637-3

JULY 14, 2001

RELEASED FOR PUBLICATION
BY AMP INCORPORATED. ALL RIGHTS RESERVED.THIS DRAWING IS UNCLASSIFIED
DATE 06-06-2001 BY AMP INCORPORATED

AMP 1758 REV 3-92 Downloaded from 060406115309 (YIMING HUANG) at 12:21

Mouser Electronics

Authorized Distributor

Click to View Pricing, Inventory, Delivery & Lifecycle Information:

[TE Connectivity:](#)

[1528025-6](#)