

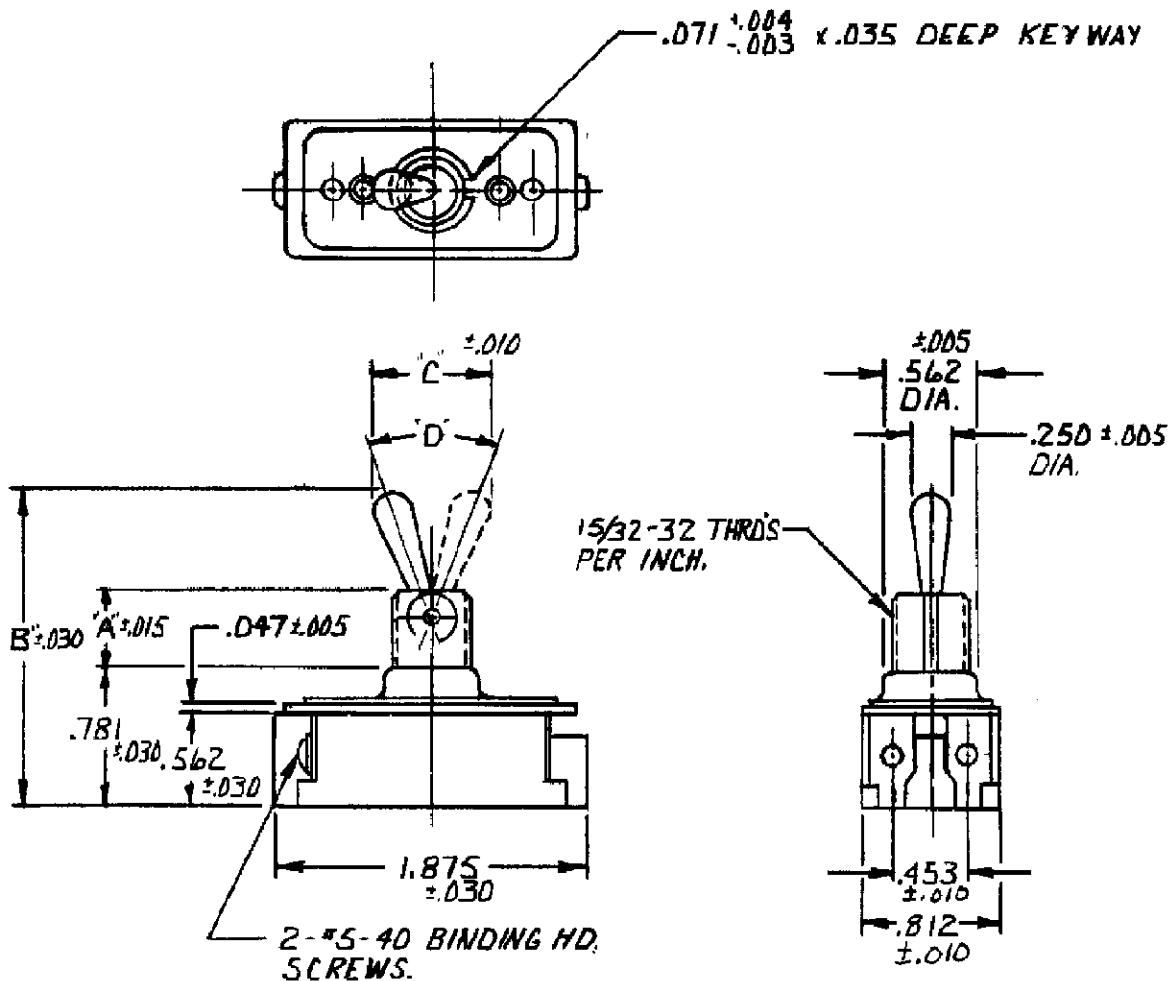
TITLE DIMENSIONS FOR DBL. POLE TOOL HD'L. SW. FOR EUROPEAN USE

ORDER NO. 702A575014

BASIC SPECS. SUMMARY

A	REVISED PER ECO-11-005294	18APR11	HMR	M. R. R. 12-16-76	DR MICHAEL WHITEO 1/8/76	APP	1520237	REV	A
				702A575014	CHK. J. SMITH 1-14-76				
LTR	REVISION RECORD	DATE	CHK	M. R. R. 12-16-76	702A575014 R.S.				

TE Connectivity



37° ± 4°	7321	.469	1.922	.719
50° ± 4°	7321	.344	1.766	.844
"D"	CAT. NO.	A	B	C



TITLE
DIMENSIONS FOR SINGLE POLE ONE HANDLE MTG. TOOL HANDLE SWITCH.

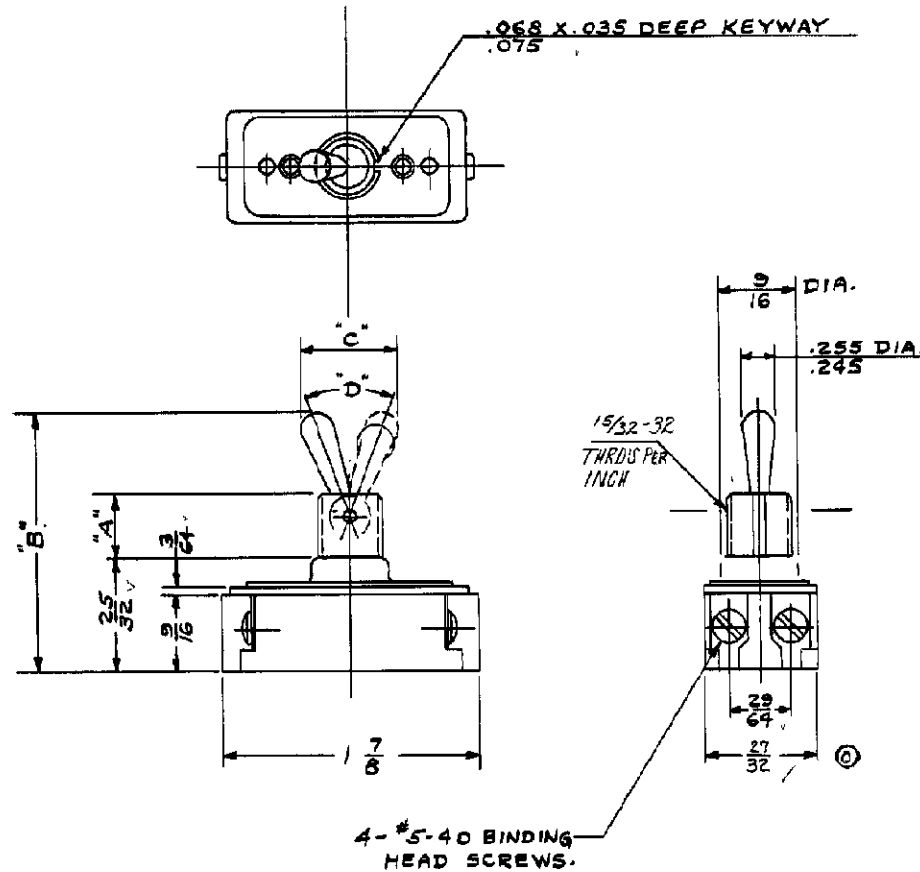
ORDER NO. 9310N10 BASIC SPECS. SUMMARY

DR. JEFF BROTHERS	11/21/94	APP. Bill Newland	1520237	REV A
CHK. GLENN STORY	11/21/94			
SEE SHEET 1				

TE TE Connectivity

1520237

RAW MAT SPEC WITH
PART NO. AND AMOUNT REQ'D.



BULLETIN

DIMENSIONS FOR ~~SWITCH~~, ONE HOLE MTG. TOOL HANDLE SWITCH

DATE	11/18/40	1520237
BY	E. B. Leonard	
CHECKED	J. O. Bach	
APPROVED		
DO NOT SCALE DRAWING. WORK ACCORDING TO DIMENSIONS.	NON-INTERCHANGEABLE	
STANDARD TOLERANCES 50-875 APPLY TO DIMENSIONS FOR WHICH TOLERANCES ARE NOT SPECIFIED.	NON-INTERCHANGEABLE	
SCALE	1" = 1"	
ORDER NO.	DEV.	REV
4041-10	A	A

SEE SHEET 1



TE Connectivity

FORM NO. 7
MAY 1934
N. 1633
15-40
SCHILLER

Mouser Electronics

Authorized Distributor

Click to View Pricing, Inventory, Delivery & Lifecycle Information:

[TE Connectivity:](#)

[7321K3](#)