

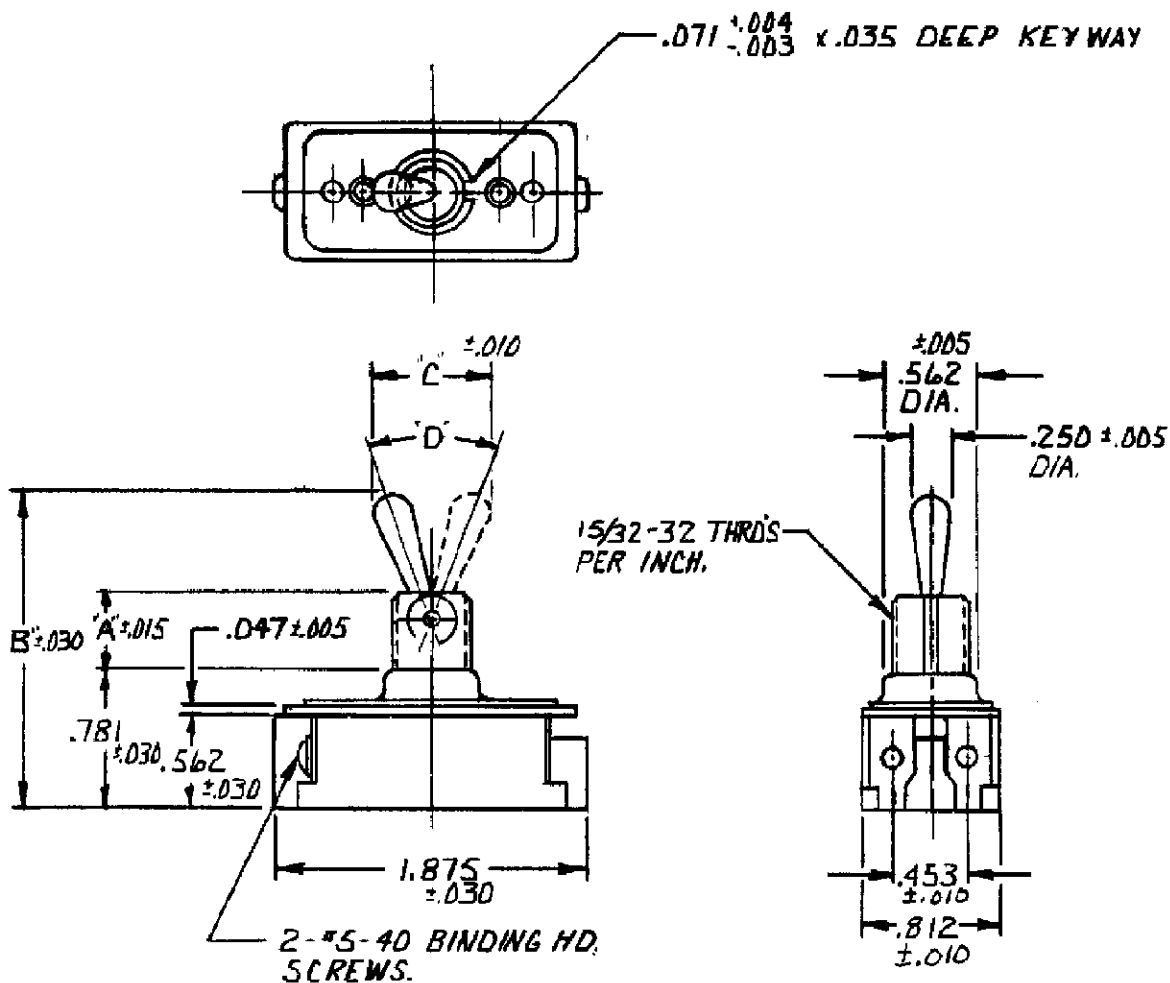
TITLE DIMENSIONS FOR DBL. POLE TOOL HD'L. SW. FOR EUROPEAN USE

ORDER NO. 702A575014

BASIC SPECS. SUMMARY

A	REVISED PER ECO-11-005294	18APR11	HMR	M. R. P. G. 12-16-76	DR MICHAEL WHITEO 1/8/76	APP. Richard S. Sarno	REV A
				702A575014	CHK. J. SMITH 1-14-76	1520237	
LTR	REVISION RECORD	DATE	CHK	702A575014 R.S.			

TE Connectivity



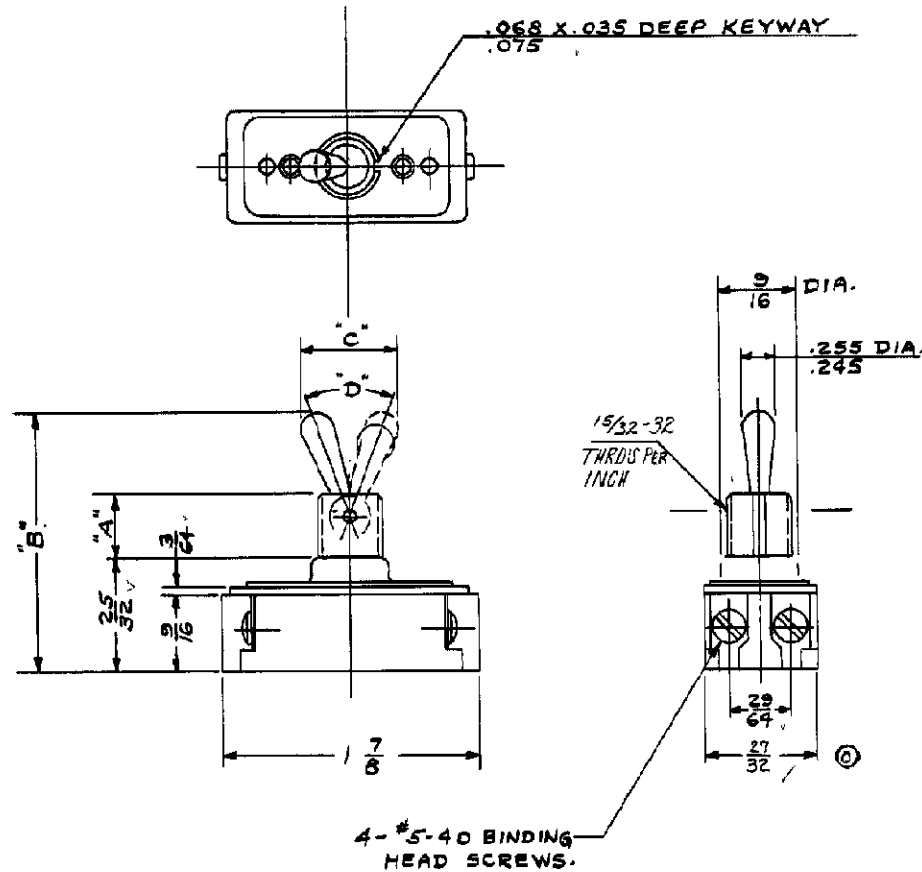
37 \pm 4°	7321	.469	1.922	.719
50 \pm 4°	7321	.344	1.766	.844
"D"	CAT. NO.	A	B	C



TITLE DIMENSIONS FOR SINGLE POLE ONE HANDLE MTG. TOOL HANDLE SWITCH.

ORDER NO.	9310N10	BASIC SPECS. SUMMARY	DR. JEFF BROTHERS	11/21/94	APP. Bill Newland	11/21/94
			CHK. GLENN STORV	11/21/94	1520237	REV A
SEE SHEET 1			TE	TE Connectivity		

1520237

RAW MAT SPEC WITH
PART NO. AND AMOUNT REQ'D.

37±4°	7320	15/32	159/64	21/32
50±4°	7320	11/32	149/64	27/32
"D"	CAT. NO.	A	B	C

BULLETIN

DIMENSIONS FOR ~~SWITCH~~, ONE HOLE MTG. TOOL HANDLE SWITCH

FORM NO. 7	DATE	BY	CHKD	APP	REV
15-40	11/18/40	E. B. Leonard			1520237
15-40	11/14/40	J. B. B. B.			NON-INTERCHANGEABLE
15-40	11/15/40				NON-INTERCHANGEABLE
15-40					SURFACE COATING
DO NOT SCALE DRAWING. WORK ACCORDING TO DIMENSIONS.					
STANDARD TOLERANCES 50-875 APPLY TO DIMENSIONS FOR WHICH TOLERANCES ARE NOT SPECIFIED.					
SCALE 1" = 1"					
SEE SHEET 1					
ORDER NO. 4041-10 DEV. A REV A					

 MADE IN U.S.A.
 DIMENSIONS IN INCHES
 FORM NO. 7

Mouser Electronics

Authorized Distributor

Click to View Pricing, Inventory, Delivery & Lifecycle Information:

[TE Connectivity:](#)

[7320K2](#) [1520237-1](#)