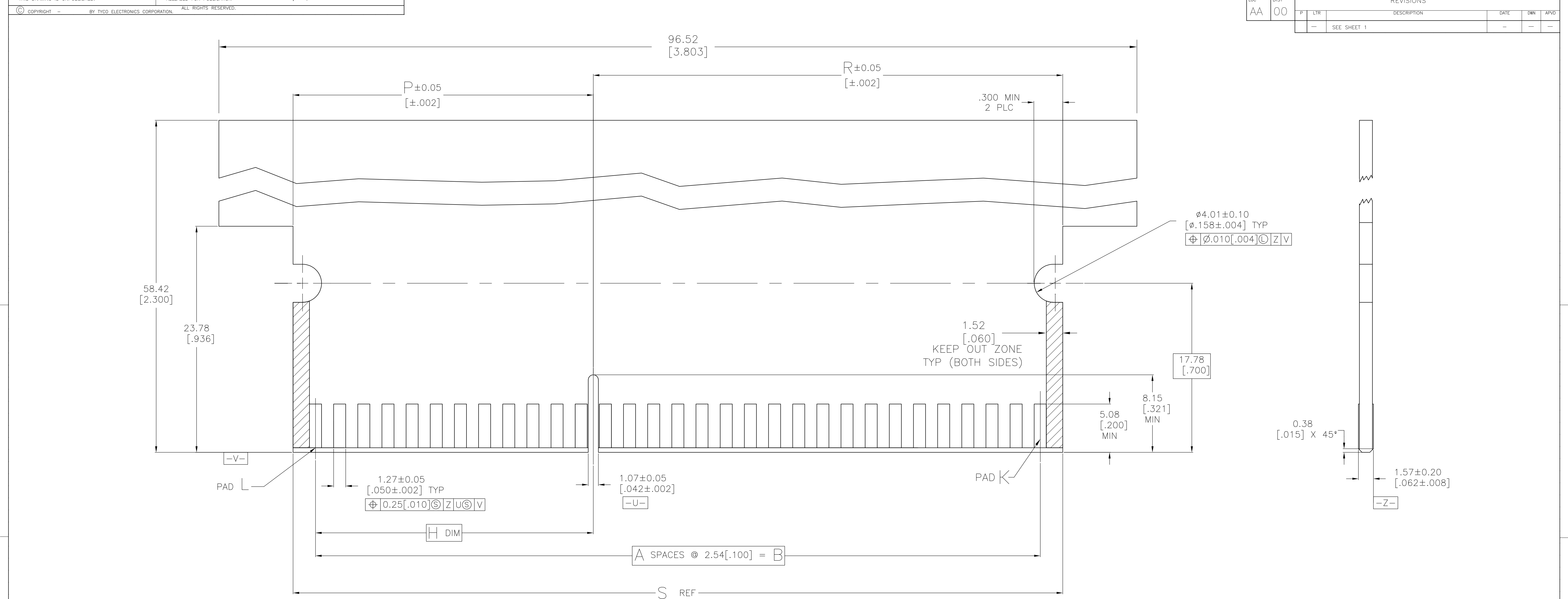
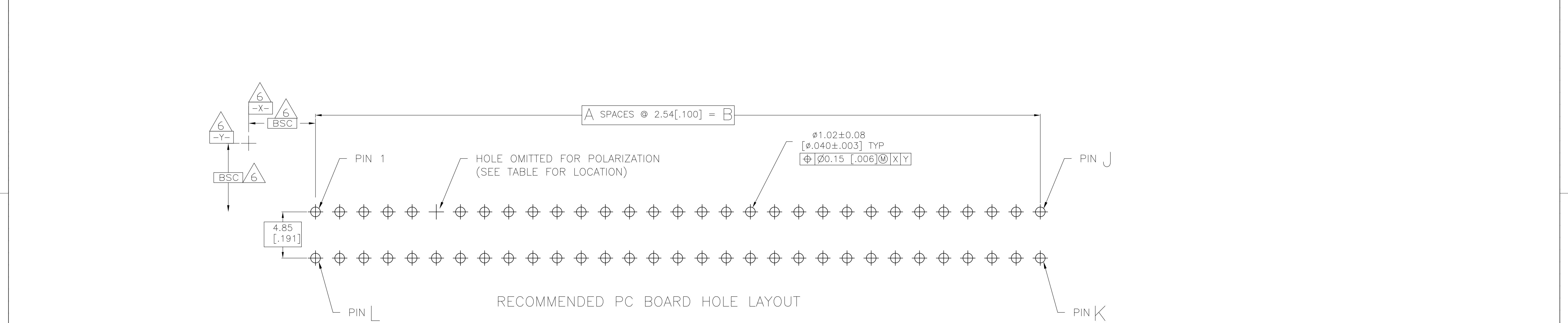


BLACK	9.1, +12V	2,3,29,30,33,34,60,61	12 & 13	6	4	80.92 [3.183]	49.35 [1.943]	31.50 [1.240]	62	32	31	29.21 [1.150]	97.10 [3.823]	113.00 [4.449]	99.92 [3.934]	90.02 [3.544]	82.52 [3.249]	76.20 [3.000]	30	31	1489165-6
WHITE	9.1, +12V	2,3,29,30,33,34,60,61	12 & 13	6	3	80.92 [3.183]	49.35 [1.943]	31.50 [1.240]	62	32	31	29.21 [1.150]	97.10 [3.823]	113.00 [4.449]	99.92 [3.934]	90.02 [3.544]	82.52 [3.249]	76.20 [3.000]	30	31	1489165-5
BLACK	-	2,3,12,13,16,17,26,27	24 & 25	28	3	37.67 [1.483]	26.49 [1.043]	11.18 [0.440]	28	15	14	8.89 [0.350]	53.92 [2.123]	69.82 [2.749]	56.74 [2.234]	46.84 [1.844]	39.34 [1.549]	33.02 [1.300]	13	14	1489165-4
BLACK	9.05, +12V	2,3,29,30,33,34,60,61	11 & 12	6	3	80.92 [3.183]	51.89 [2.043]	28.96 [1.140]	62	32	31	26.67 [1.050]	97.10 [3.823]	113.00 [4.449]	99.92 [3.934]	90.02 [3.544]	82.52 [3.249]	76.20 [3.000]	30	31	1489165-3
BLACK	9.1, +12V	2,3,29,30,33,34,60,61	12 & 13	6	3	80.92 [3.183]	49.35 [1.943]	31.50 [1.240]	62	32	31	29.21 [1.150]	97.10 [3.823]	113.00 [4.449]	99.92 [3.934]	90.02 [3.544]	82.52 [3.249]	76.20 [3.000]	30	31	1489165-1
LATCH COLOR	VRM DESIGNATION	RETENTION FEATURE LOCATION	MOLDED-IN KEYING FEATURE LOCATED BETWEEN PINS	OMITTED PIN AND HOLE	FINISH	S	R	P	L	K	J	H	G	F	E	D	C	B	A	NO OF DUAL POSN	PART NUMBER



RECOMMENDED MATING BOARD EDGE CONFIGURATION



RECOMMENDED PC BOARD HOLE LAYOUT

THIS DRAWING IS A CONTROLLED DOCUMENT.		DWN NF/L.A.MAYER	26MAR2008	Tyco Electronics Corporation Harrisburg, PA 17105-3608	
DIMENSIONS: mm [INCHES]		CHK A.W.FRANTUM	26MAR2008	NAME	
TOLERANCES UNLESS OTHERWISE SPECIFIED:		APP'D S.FLICKINGER	26MAR2008	PRODUCT SPEC	
0 PLC ± -		APPLICATION SPEC		SIZE	
1 PLC ± -		114-13018		CAGE CODE	
2 PLC ± 0.13[.005]		WEIGHT		DRAWING NO	
3 PLC ± -		A100779		RESTRICTED TO	
4 PLC ± -		C=1489165		REV	
ANGLES ± ± 2°		CUSTOMER DRAWING		SCALE	
MATERIAL SEE NOTE 1		SEE NOTE 2		5:1	
				SHEET	
				2	
				OF	
				2	
				REV	
				J	

Mouser Electronics

Authorized Distributor

Click to View Pricing, Inventory, Delivery & Lifecycle Information:

[TE Connectivity:](#)

[1489165-4](#)