

THIS DRAWING IS UNPUBLISHED.

RELEASED FOR PUBLICATION DEC ,2005.

© COPYRIGHT 2005 By -

ALL RIGHTS RESERVED.

LOC	DIST	REVISIONS			
P	LTR	DESCRIPTION	DATE	DWN	APVD
E	B	B	ECO-14-000450	13APR2014	RZ MY

NOTES:

1 SINGLE PACKING: ONE CONNECTOR PER LABELED BAG PACKAGED. LABELED PER TEC-107-115

2 TRAY PACKAGED

3 Ni PLATING

4 Au PLATING

5. ELECTRICAL CHARACTERISTICS

FREQUENCY RANGE:	DC - 1 GHz
NOMINAL IMPEDANCE:	75 Ohm
INSULATION RESISTANCE:	5000 MOhm
WORKING VOLTAGE:	500 Volts RMS at Sea Level
DIELECTRIC WITHSTAND VOLTAGE:	1500 Volts RMS Max
CONTACT RESISTANCE:	
CENTER CONTACT:	1.50 mOhm Max
OUTER CONTACT:	1.00 mOhm Max
VSWR @ 0.3 GHz:	1.8 Max
INSERTION LOSS @ 0.3 GHz:	0.8 dB MAX

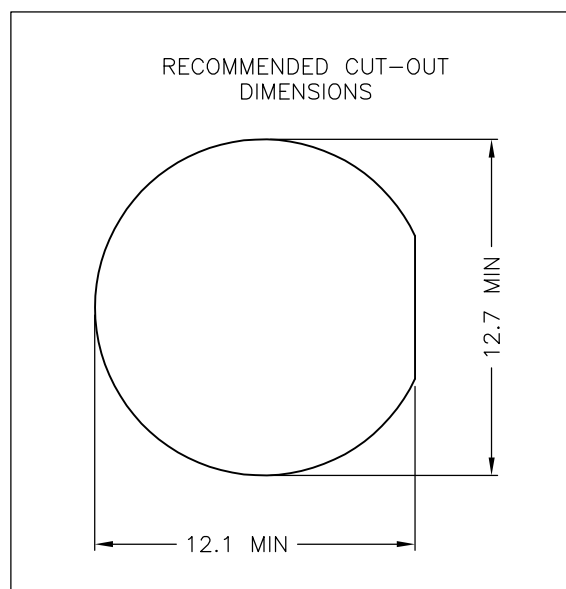
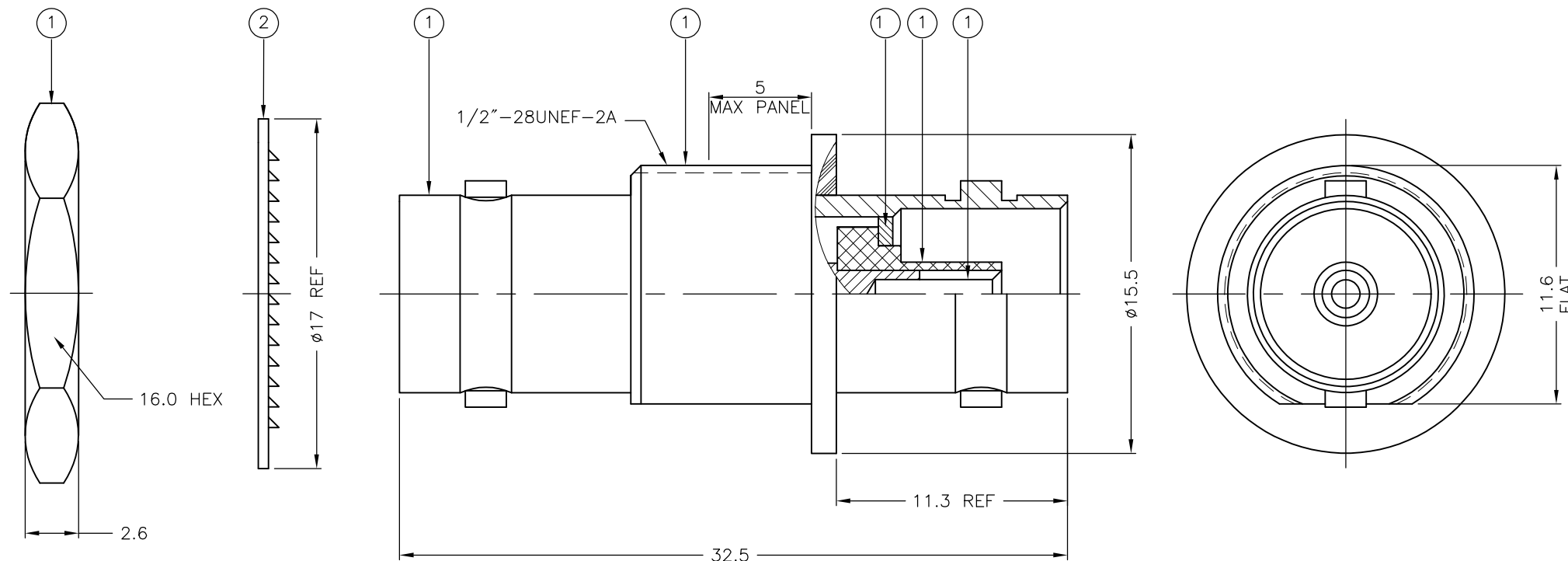
6. MECHANICAL CHARACTERISTICS

DURABILITY: 500 Cycles Min

7. ENVIRONMENTAL CHARACTERISTICS

OPERATING TEMPERATURE: -40 to +60 DegC

8. SUPPLIED SEMI-ASSEMBLED (PACK CONTAINS LOOSE PIECES)



QTY	PLC	QTY	MATERIAL	NOTE	DESCRIPTION	ITEM
1	1	1	BRASS	4	CENTER CONTACT	7
2	2	2	POM		DIELECTRIC	6
1	1	1	BRASS	3	WASHER	5
1	1	1	ABS		ISOLATOR	4
1	1	1	BRASS	3	BODY	3
1	1	1	STEEL	3	LOCKWASHER	2
1	1	1	BRASS	3	NUT	1
6--0	1--0		MATERIAL		DESCRIPTION	ITEM
2	1					
QUANTITY PER ASSY		PARTS LIST				

THIS DRAWING IS A CONTROLLED DOCUMENT.		DWN	R GOODALL	12-9-01	TE Connectivity														
DIMENSIONS: mm		CHK	F W-KING	12-9-01															
TOLERANCES UNLESS OTHERWISE SPECIFIED:		APVD	F W-KING	12-9-01															
<table border="0"> <tr><td>0 PLC</td><td>± -</td></tr> <tr><td>1 PLC</td><td>± 0.2</td></tr> <tr><td>2 PLC</td><td>± 0.1</td></tr> <tr><td>3 PLC</td><td>± -</td></tr> <tr><td>4 PLC</td><td>± -</td></tr> <tr><td>ANGLES</td><td>± -</td></tr> </table>		0 PLC	± -	1 PLC	± 0.2	2 PLC	± 0.1	3 PLC	± -	4 PLC	± -	ANGLES	± -	PRODUCT SPEC	NAME			BNC INSULATED BULKHEAD ADAPTOR JACK 75 OHM	
0 PLC	± -																		
1 PLC	± 0.2																		
2 PLC	± 0.1																		
3 PLC	± -																		
4 PLC	± -																		
ANGLES	± -																		
MATERIAL SEE TABLE		FINISH	-			RESTRICTED TO	-												
		WEIGHT	-			SIZE	A3												
		CUSTOMER DRAWING			CAGE CODE	00779	DRAWING NO	C-1478238											
					SCALE	NTS	SHEET	1 OF 1											
					REV		B												

# Mouser Electronics

Authorized Distributor

Click to View Pricing, Inventory, Delivery & Lifecycle Information:

[TE Connectivity:](#)

[1-1478238-0](#)