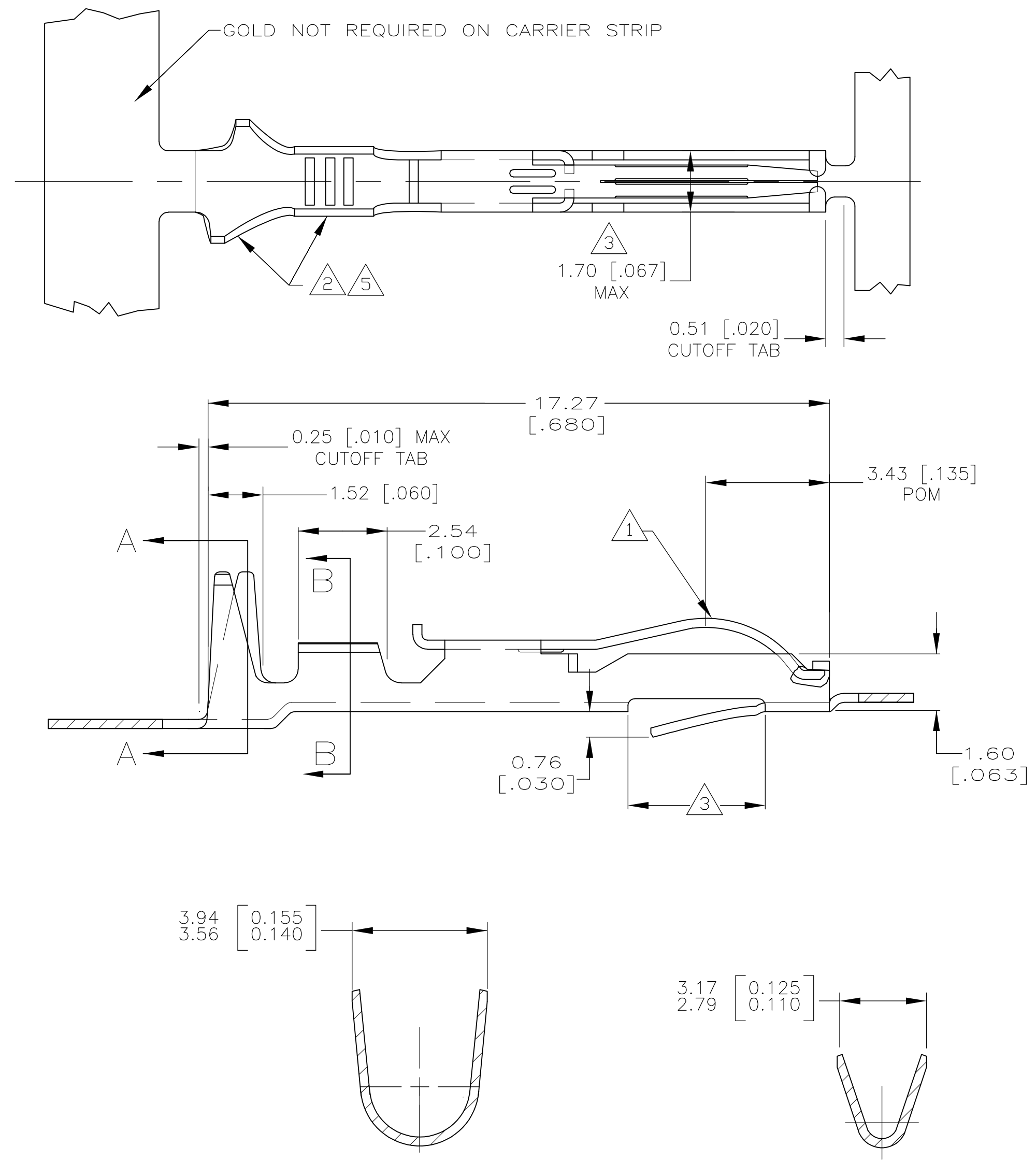


| LOC | DIST | REVISIONS | | | | | |
|-----|------|-----------|-----|--------------------------------|---------|-----|------|
| | | P | LTR | DESCRIPTION | DATE | DWN | APVD |
| GP | 00 | | F | ADDED 9--0 PER EC 0S12-0217-03 | 12MAY03 | AWF | AWF |
| | | | F1 | REVISED PER ECO-09-020689 | 25AUG09 | KK | AEG |


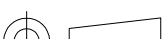


- 1 0.76 μ m [.000030] MIN GOLD OVER 0.76 μ m [.000030] MIN NICKEL IN CONTACT AREA.
- 2 TIN-LEAD IN CRIMP AREA.
- 3 .067 MAX ALLOWED IN LOCKING LANCE AREA.
- 4 REEL QUANTITY = 7000 PIECES.
- 5 TIN PLATE IN CRIMP AREA.
- 6 OBSOLETE PARTS: OBSOLETE CIS STREAMLINING PER D.RENAUD/D.SINISI

SECTION A-A
INSULATION RANGE
.100-.121 DIA

SECTION B-B
WIRE RANGE
#20-16

| | | | | |
|---|------------|--------|------|------------|
| 6 | SUPERSEDED | 1 | 5 | 9-147431-0 |
| | | 1 | 2 | 147431-2 |
| | | FINISH | PART | |

| | | | | | | |
|---|---|------------------|----------------------|------------------------|---|--|
| THIS DRAWING IS A CONTROLLED DOCUMENT. | | DWN | 31JUL00 | |  Tyco Electronics Corporation Harrisburg, PA, 17105 | |
| | | CHK | A.STAUB BG 08 MAR 00 | | | |
| DIMENSIONS: INCHES | TOLERANCES UNLESS OTHERWISE SPECIFIED: | APVD | M.MILLER 08 MAR 00 | | NAME CONTACT, CRIMP-SNAP, 20-16 AWG, TWIN LEAF | |
| | | PRODUCT SPEC | | | | |
|  | 0 PLC ± - 1 PLC ± - 2 PLC ± 0.13 [.005] 3 PLC ± - 4 PLC ± - ANGLES ± - | APPLICATION SPEC | | SIZE A2 | | |
| | | WEIGHT - | | | | |
| MATERIAL COPPER ALLOY | | CUSTOMER DRAWING | | CAGE CODE 00779 | | |
| | | | | DRAWING NO C=147431 | | |
| | | | | RESTRICTED TO - | | |
| | | | | SCALE 10:1 | | |
| | | | | SHEET 1 OF 1 | | |
| | | | | REV F1 | | |

Mouser Electronics

Authorized Distributor

Click to View Pricing, Inventory, Delivery & Lifecycle Information:

[TE Connectivity:](#)

[147431-2](#)