

4

3

2

1

THIS DRAWING IS UNPUBLISHED.

RELEASED FOR PUBLICATION

© COPYRIGHT - By TE CONNECTIVITY

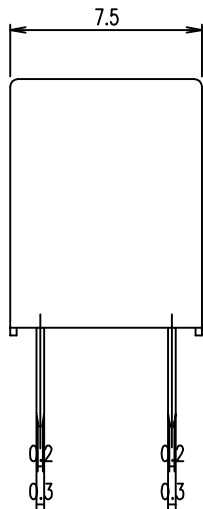
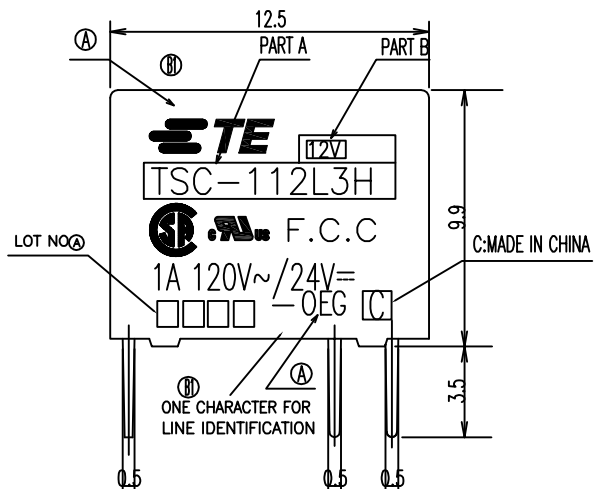
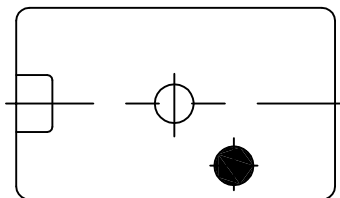
ALL RIGHTS RESERVED.

LOC
HB

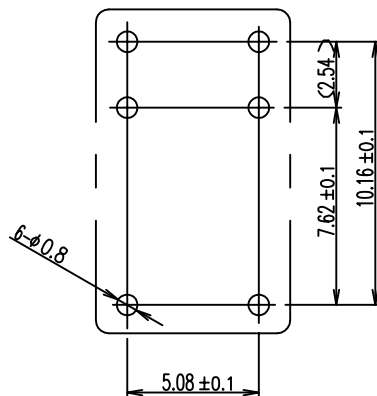
DIST
-

REVISIONS

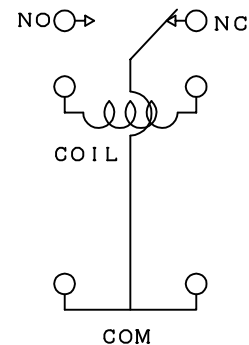
| P | LTR | DESCRIPTION | DATE | DWN | APVD |
|----|-----|--|---------------|-----------|-------------|
| B1 | | 1.CHANGE TE LOGO 2.ADD LINE IDENTIFICATION 3.PN OBSOLETE 4.TERMINALS TOLERANCE CLARIFICATION | ECO-11-018616 | 04-MAY-12 | P.L. B.H.Y. |



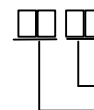
DRILLING DIAGRAM (BOTTOM VIEW)



CONNECTION DIAGRAM (BOTTOM VIEW)

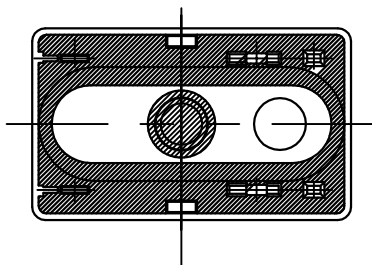


(B1) NOTES:
1.LOT NO. SYSTEM AS FOLLOWING:



WEEK
YEAR

2.TERMINAL DIMENSIONS BEFORE SOLDER DIP
3.FOR THE TIN-PLATING OF THE PINS:
+0.1mm FOR WIDTH, THICKNESS AND DIAMETER
+0.5mm FOR LENGTH



| | | | | | |
|---|--|-------------------|--|-------------------------|--|
| THIS DRAWING IS A CONTROLLED DOCUMENT. | | DWN N.FUNAYAMA | | TE Connectivity | |
| DIMENSIONS: mm | | CHK H.SASAKI | | | |
| TOLERANCES UNLESS OTHERWISE SPECIFIED: | | APVD A.NAGAI | | NAME | |
| 0 PLC ± - 1 PLC ± - 2 PLC ± - 3 PLC ± - 4 PLC ± - ANGLES ± - | | PRODUCT SPEC - | | TSC SPECIA;L TYPE | |
| MATERIAL | | FINISH | | APPLICATION SPEC - | |
| - | | - | | WEIGHT - | |
| | | | | SIZE A3 | |
| | | | | CAGE CODE 00779 | |
| | | | | DRAWING NO C=1461185 | |
| | | | | RESTRICTED TO - | |
| | | | | SCALE 5:1 | |
| | | | | SHEET 1 of 2 | |
| | | | | REV B1 | |
| CUSTOMER DRAWING | | | | | |

THIS DRAWING IS UNPUBLISHED.

RELEASED FOR PUBLICATION

-. - .

© COPYRIGHT - By TE CONNECTIVITY

ALL RIGHTS RESERVED.

LOC HB DIST -

REVISIONS

| P | LTR | DESCRIPTION | DATE | DWN | APVD |
|---|-----|-------------|------|-----|------|
| - | - | SEE SHEET 1 | - | - | - |

GENERAL TOLERANCE

| DIAGRAM DIMENSION | TOLERANCE |
|-------------------|-----------|
| 0.99mm max. | ±0.1mm |
| 1 - 2.99mm | ±0.2mm |
| 3mm min. | ±0.3mm |



| | | | | | |
|-----|-------------|------------|--------|-----------------|----------|
| n | 5-144007-3 | TSC-124D3H | 24V | 108-79510 | ACTIVE |
| m | 1461185-4 | TSC-118D3H | 18V | 108-79509 | OBSOLETE |
| l | 2-1419130-1 | TSC-112D3H | 12V | 108-79508 | ACTIVE |
| k | 1461185-3 | TSC-109D3H | 9V | 108-79507 | OBSOLETE |
| j | 1-1419130-4 | TSC-106D3H | 6V | 108-79506 | OBSOLETE |
| i | 1-1419130-0 | TSC-105D3H | 5V | 108-79505 | ACTIVE |
| h | 1461185-2 | TSC-103D3H | 3V | 108-79504 | OBSOLETE |
| g | 2-1419130-8 | TSC-124L3H | 24V | 108-79503 | ACTIVE |
| f | 1461185-1 | TSC-118L3H | 18V | 108-79502 | OBSOLETE |
| e | 2-1419130-4 | TSC-112L3H | 12V | 108-79501 | ACTIVE |
| d | 1-1419130-8 | TSC-109L3H | 9V | 108-79500 | ACTIVE |
| c | 1-1419130-5 | TSC-106L3H | 6V | 108-79499 | OBSOLETE |
| b | 1-1419130-2 | TSC-105L3H | 5V | 108-79498 | ACTIVE |
| a | 5-144007-2 | TSC-103L3H | 3V | 108-79497 | ACTIVE |
| No. | TE PART NO. | PART A | PART B | PRODUCT SPEC NO | STATUS |

RELAY TYPE

| UL-94 | FINISH | MATERIAL | DESCRIPTION | ITEM |
|-------|------------|-------------|---------------------------|------|
| | | | UV SEAL (FOR SEALED TYPE) | 15 |
| | | EPOXY RESIN | SEAL (CASE&BASE) MIX | 14 |
| | SOLDER DIP | Cu ALLOY | COIL TERMINAL | 13 |
| 94V-0 | | PBT | BOBBIN | 12 |
| | | UEW | MAGNETIC WIRE | 11 |
| 94V-0 | | PBT | CASE | 10 |
| | Ni P | STEEL | YOKE | 9 |
| | Ni P | STEEL | ARMATURE | 8 |
| | Ni P | STEEL | CORE | 7 |
| | SOLDER DIP | Cu ALLOY | MOVABLE SPRING | 6 |
| | SOLDER DIP | Cu ALLOY | B TERMINAL | 5 |
| | SOLDER DIP | Cu ALLOY | M TERMINAL | 4 |
| | GS CLAD | Ag ALLOY | MOVABLE CONTACT | 3 |
| | GS CLAD | Ag ALLOY | B CONTACT | 2 |
| | GS CLAD | Ag ALLOY | M CONTACT | 1 |

| | | | | | |
|--|--|------------------|--|-------------------------------|--|
| THIS DRAWING IS A CONTROLLED DOCUMENT. | | DWN N.FUNAYAMA | | TE Connectivity | |
| | | CHK H.SASAKI | | | |
| DIMENSIONS: mm | | APVD A.NAGAI | | NAME | |
| TOLERANCES UNLESS OTHERWISE SPECIFIED: | | PRODUCT SPEC | | TSC SPECIA;L TYPE | |
| 0 PLC ± - | | APPLICATION SPEC | | SIZE CAGE CODE DRAWING NO | |
| 1 PLC ± - | | WEIGHT | | A3 00779 C=1461185 | |
| 2 PLC ± - | | CUSTOMER DRAWING | | RESTRICTED TO | |
| 3 PLC ± - | | | | SCALE 5:1 SHEET 2 OF 2 REV B1 | |
| 4 PLC ± - | | | | | |
| ANGLES ± - | | | | | |
| MATERIAL | | | | | |
| FINISH | | | | | |

Mouser Electronics

Authorized Distributor

Click to View Pricing, Inventory, Delivery & Lifecycle Information:

[TE Connectivity:](#)

[TSC-105L3H,000](#)