

D

C

B

A

D

C

B

A

LOC	DIST	REVISIONS					
		P	LTR	DESCRIPTION	DATE	DWN	APVD
AD	00		B	ECO-06-000585	10AUG06	BSV	MK

SPECIFICATIONS:

MATERIALS:  
CASE: HIGH TEMPERATURE POLYESTER.  
ACTUATOR BUTTON: POLYAMIDE, COLOR: SEE CHART BELOW.  
MOVING CONTACT: COPPER ALLOY,GOLD OVER NICKEL PLATE.  
FIXED CONTACT/TERMINAL: COPPER ALLOY. TIN/LEAD PLATE.  
TERMINAL SEAL: EPOXY.

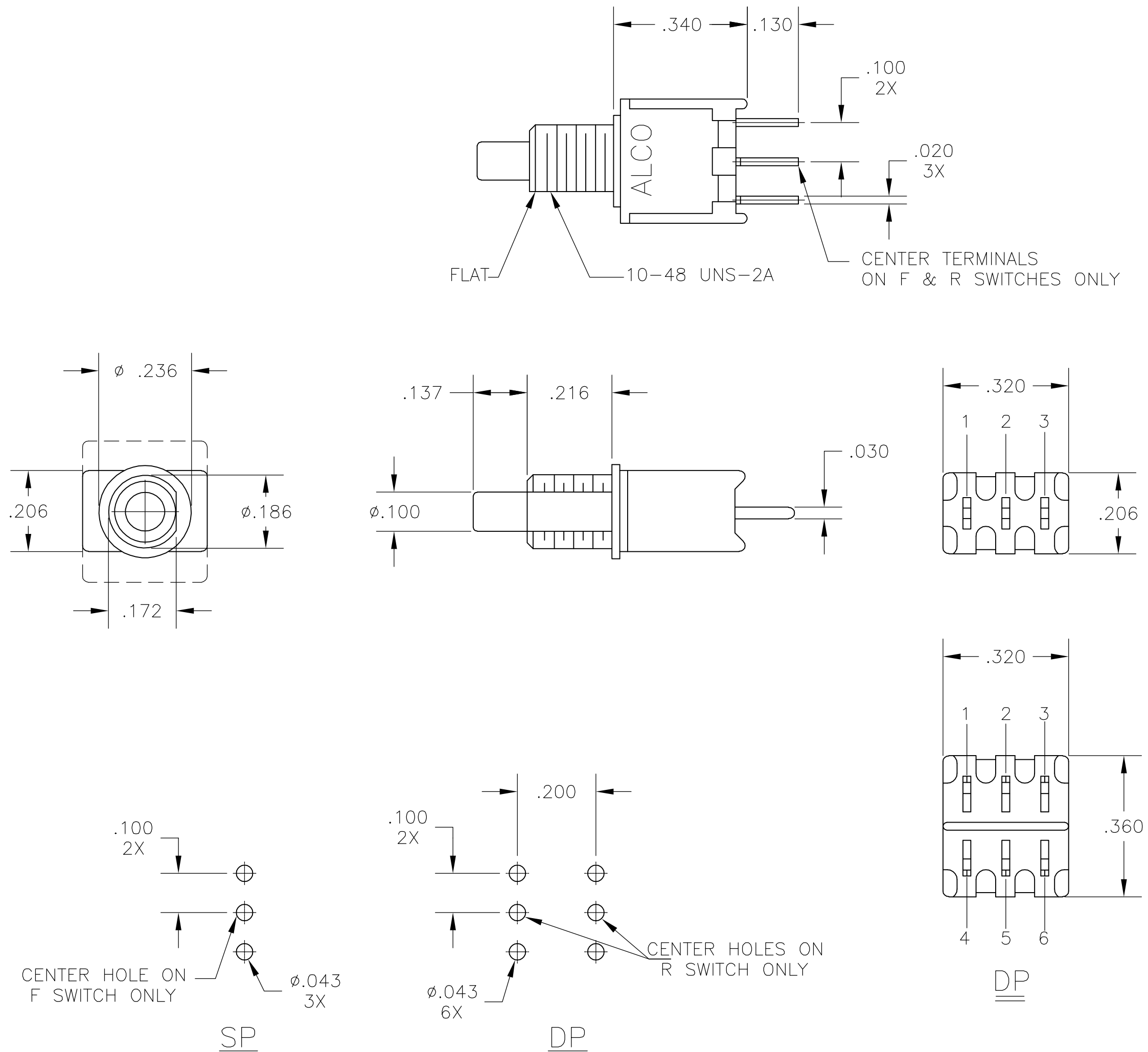
ELECTRICAL:  
CONTACT RATING: 0.4 VA MAX. @ 20 VDC OR PEAK AC.  
INITIAL CONTACT RESISTANCE: 20 MILLIOHMS MAX.  
INSULATION RESISTANCE: 1.000 MEGOHMS @ 500 VDC MIN.  
DIELECTRIC STRENGTH: 1.000 VOLTS RMS @ SEA LEVEL.  
LIFE EXPECTANCY: 100.000 CYCLES.

MECHANICAL:  
ACTUATION FORCE: 50 TO 400 GRAMS.  
ACTUATION TRAVEL: .030".

ENVIROMENTAL:  
OPERATING TEMPERATURE: -22°F TO +149°F (-30°C TO +65°C)  
STORAGE TEMPERATURE : -22°F TO +149°F (-30°C TO +65°C)

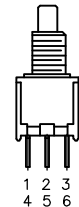
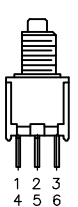
NOTES:

1. INTERPRET DRAWING PER ANSI Y14.5M-1982.
2. MOUNTING HARDWARE SUPPLIED: (1) LOCKWASHER  
(1) HEX NUT.

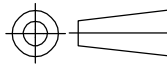


RECOMMENDED HOLE LAYOUT  
TOLERANCE  $\pm .002$  UNLESS  
OTHERWISE NOTED

(*)	ACTUATOR BUTTON COLORS
(0)	BLACK
(2)	RED
(6)	BLUE

TERMINALS CONNECTED WITH BUTTON IN POSITIONS SHOWN.		
MODEL NO.		
TPC21RG-PC (*)	2 TO 1 (MOM) 5 TO 4	2 TO 3 (MOM) 5 TO 6
TPC21RG-PC (*)	OFF	1 TO 3 (MOM) 4 TO 6
TPC11FG-PC (*)	2 TO 1	2 TO 3 (MOM)
TPC11CG-PC (*)	OFF	1 TO 3 (MOM)
NOTE: DESIGNATION NUMBERS ARE FOR REFERENE ONLY AND DO NOT APPEAR ON THE SWITCHES		

AUGAT D/N 40313-SD

THIS DRAWING IS A CONTROLLED DOCUMENT.		DWN S.KIRCORIAN	03OCT96	<b>tyco</b> <b>Electronics</b>		Tyco Electronics Corporation Harrisburg, Pa 17105-3608	
DIMENSIONS: INCHES		CHK —	—	NAME  PUSHBUTTON SWITCH SP & DP PC (TPC11-PC & TPC21-PC)			
		APVD —	—				
		PRODUCT SPEC —					
		APPLICATION SPEC —					
MATERIAL SEE SPECIFICATIONS		WEIGHT —	—	SIZE A2	CAGE CODE 00779	DRAWING NO C-1437572-3	RESTRICTED TO —
FINISH SEE SPECIFICATIONS		CUSTOMER DRAWING			SCALE 4:1	SHEET 1 OF 1	REV B

# Mouser Electronics

Authorized Distributor

Click to View Pricing, Inventory, Delivery & Lifecycle Information:

[TE Connectivity:](#)

[TPC21RGPC0](#)