

D

C

B

A

D

C

B

A

LOC	DIST	REVISIONS					
		P	LTR	DESCRIPTION	DATE	DWN	APVD
AD	00		B	ECO-06-000585	10AUG06	BSV	MK

SPECIFICATIONS:

MATERIALS:
CASE: HIGH TEMPERATURE POLYESTER.
ACTUATOR BUTTON: POLYAMIDE, COLOR: SEE CHART BELOW.
MOVING CONTACT: COPPER ALLOY,GOLD OVER NICKEL PLATE.
FIXED CONTACT/TERMINAL: COPPER ALLOY. TIN/LEAD PLATE.
TERMINAL SEAL: EPOXY.

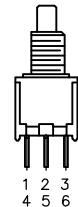
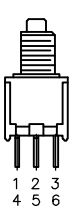
ELECTRICAL:
CONTACT RATING: 0.4 VA MAX. @ 20 VDC OR PEAK AC.
INITIAL CONTACT RESISTANCE: 20 MILLIOHMS MAX.
INSULATION RESISTANCE: 1.000 MEGOHMS @ 500 VDC MIN.
DIELECTRIC STRENGTH: 1.000 VOLTS RMS @ SEA LEVEL.
LIFE EXPECTANCY: 100.000 CYCLES.

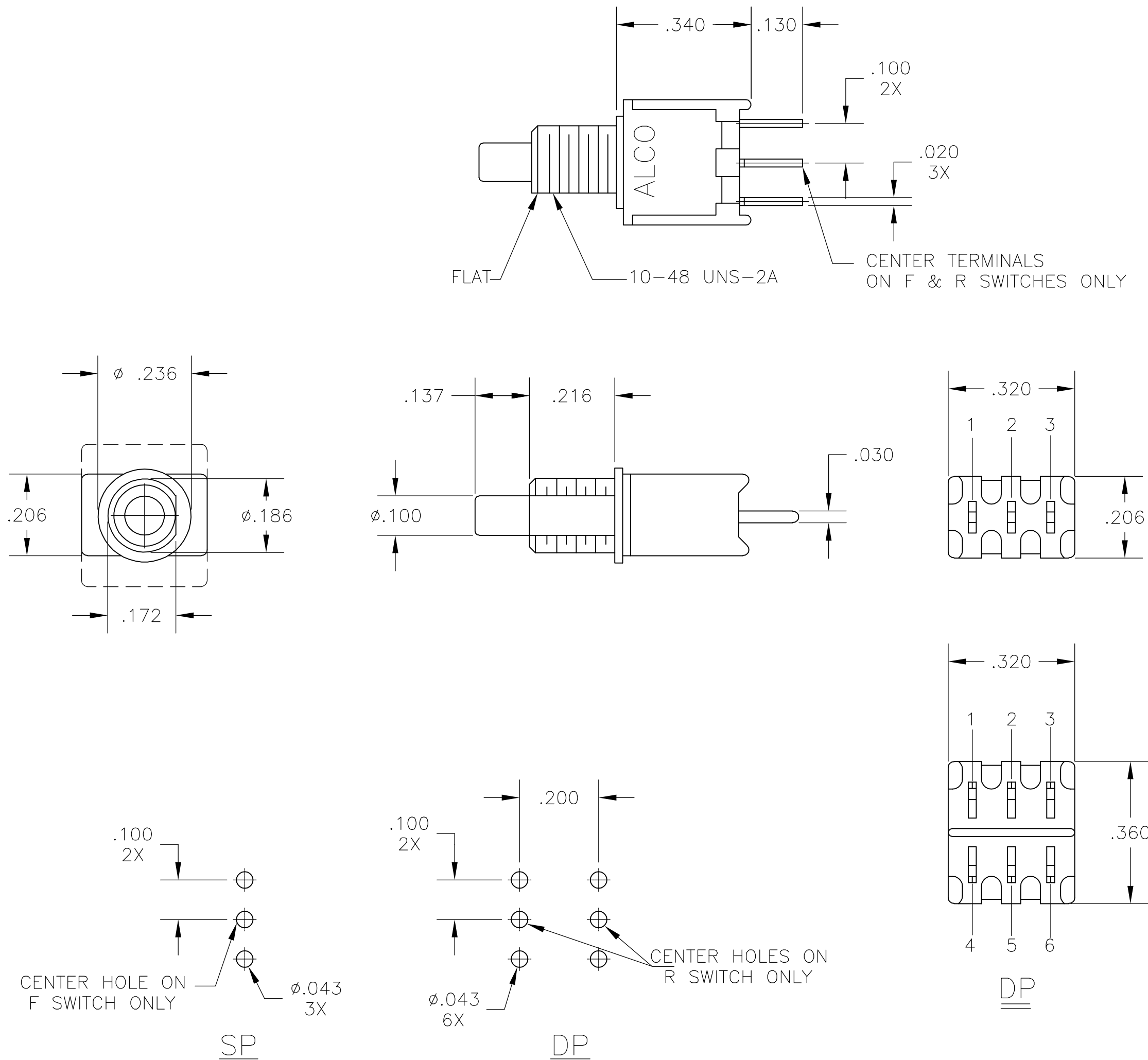
MECHANICAL:
ACTUATION FORCE: 50 TO 400 GRAMS.
ACTUATION TRAVEL: .030°.

ENVIROMENTAL:
OPERATING TEMPERATURE: -22°F TO +149°F (-30°C TO +65°C)
STORAGE TEMPERATURE : -22°F TO +149°F (-30°C TO +65°C)

NOTES:

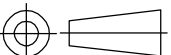
- INTERPRET DRAWING PER ANSI Y14.5M-1982.
- MOUNTING HARDWARE SUPPLIED: (1) LOCKWASHER
(1) HEX NUT.

TERMINALS CONNECTED WITH BUTTON IN POSITIONS SHOWN.		
MODEL NO.		
TPC21RG-PC (*)	2 TO 1 (MOM) 5 TO 4	2 TO 3 (MOM) 5 TO 6
TPC21RG-PC (*)	OFF	1 TO 3 (MOM) 4 TO 6
TPC11FG-PC (*)	2 TO 1	2 TO 3 (MOM)
TPC11CG-PC (*)	OFF	1 TO 3 (MOM)
NOTE: DESIGNATION NUMBERS ARE FOR REFERENE ONLY AND DO NOT APPEAR ON THE SWITCHES		



RECOMMENDED HOLE LAYOUT
TOLERANCE ±.002 UNLESS
OTHERWISE NOTED

(*)	ACTUATOR BUTTON COLORS
(0)	BLACK
(2)	RED
(6)	BLUE

THIS DRAWING IS A CONTROLLED DOCUMENT.		DWN S.KIRCORIAN	03OCT96	tyco Electronics		Tyco Electronics Corporation Harrisburg, Pa 17105-3608			
DIMENSIONS: INCHES		CHK —	—	NAME PUSHBUTTON SWITCH SP & DP PC (TPC11-PC & TPC21-PC)					
		APVD —	—						
		PRODUCT SPEC —							
TOLERANCES UNLESS OTHERWISE SPECIFIED:		APPLICATION SPEC —		SIZE		CAGE CODE	DRAWING NO	RESTRICTED TO	
0 PLC ± — 1 PLC ± — 2 PLC ± — 3 PLC ± .010 4 PLC ± — ANGLES ± —		WEIGHT —		A2		00779	C= 1437572-3	—	
MATERIAL SEE SPECIFICATIONS		FINISH SEE SPECIFICATIONS		CUSTOMER DRAWING		SCALE 4:1		SHEET 1 of 1	REV B

Mouser Electronics

Authorized Distributor

Click to View Pricing, Inventory, Delivery & Lifecycle Information:

[TE Connectivity:](#)

[TPC11CGPC0](#)