

LOC	DIST	REVISIONS				
		P	LTR	DESCRIPTION	DATE	DWN APVD
AD	00		A1	REVISED PER ECO-11-004917	11MAR11	RK HMR

SPECIFICATIONS:

MATERIALS:
MOVEABLE CONTACT: COPPER ALLOY, GOLD PLATE
OVER SILVER CLAD.
FIXED CONTACT: COPPER ALLOY, GOLD PLATE
OVER SILVER CLAD.

ELECTRICAL:
CONTACT RATING: 0.4VA @ 20VDC OR PEAK AC.
5 AMPS @ 250VAC OR 24VDC (RESISTANCE).
INITIAL CONTACT RESISTANCE: 20 MILLIOHMS MAX
INSULATION RESISTANCE: 100 MEGOHMS MINIMUM
DIELECTRIC STRENGTH: 1500 VOLTS RMS @ SEA LEVEL
LIFE EXPECTANCY: 100,000 OPERATIONS AT RATED CURRENT

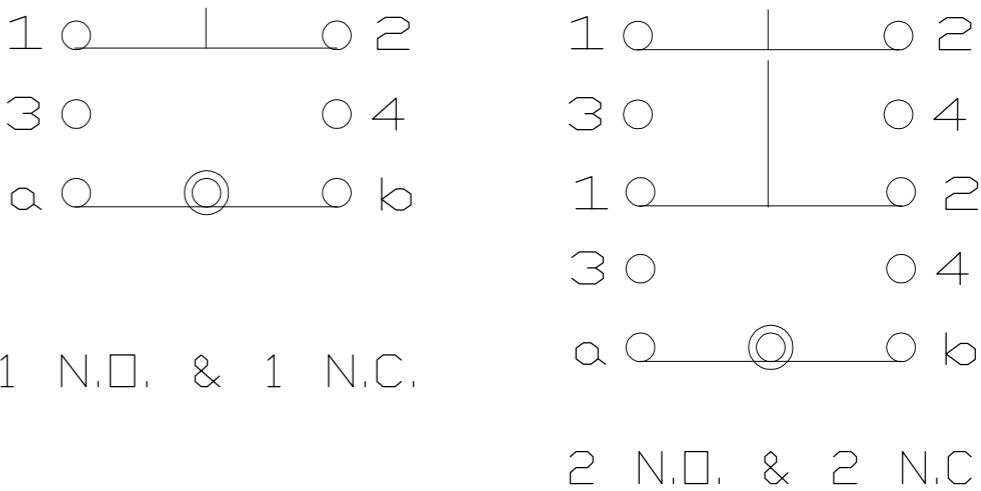
ENVIRONMENTAL:
OPERATING TEMPERATURE: -4 F TO 122 F
(-20 C TO 50 C)
STORAGE TEMPERATURE: -4 F TO 122 F
(-20 C TO 50 C)

- NOTES:
- INTERPRET DRAWING PER ASME Y14.5M-1994
 - DILTIGHT MODELS MEET NEMA 1, 12, 13 REQUIREMENTS
 - UL RECOGNIZED E-51302
 - PANEL THICKNESS: NON-DILTIGHT = 0.230 MAX
DILTIGHT = 0.210 MAX

- 5 THE PLATINGS CONTAINED IN THIS PART SHALL CONTAIN NO LEAD.
- 6 PRELIMINARY PART, NOT RELEASED FOR PRODUCTION.

* DENOTES DILTIGHT VERSION DIMENSIONS



** ORDER BUTTON AND LAMP SEPARATELY: SEE
REF 80810 & 80811



CONTACT DIAGRAM
(BUTTON NOT DEPRESSED)

WAS DWG 80809

1571543-3			164EL522		2 N.O. & N.C.	PUSH ON/PUSH OFF
1571543-2			164EL511		1 N.O. & N.C.	PUSH ON/PUSH OFF
1571543-1			164EL11		1 N.O. & N.C.	MOMENTARY
			165EL533		3 N.O. & N.C.	PUSH ON/PUSH OFF
4-1437569-5			165EL522		2 N.O. & N.C.	PUSH ON/PUSH OFF
4-1437569-4			165EL511		1 N.O. & N.C.	PUSH ON/PUSH OFF
			165EL33		3 N.O. & N.C.	MOMENTARY
4-1437569-3			165EL22		2 N.O. & N.C.	MOMENTARY
4-1437569-2			165EL11		1 N.O. & N.C.	MOMENTARY
1437569-7			164EL533		3 N.O. & N.C.	PUSH ON/PUSH OFF
1437569-6			164EL522		2 N.O. & N.C.	PUSH ON/PUSH OFF
1437569-5			164EL511		1 N.O. & N.C.	PUSH ON/PUSH OFF
1437569-4			164EL5		-	PUSH ON/PUSH OFF
			164EL33		3 N.O. & N.C.	MOMENTARY
1437569-3			164EL22		2 N.O. & N.C.	MOMENTARY
1437569-2			164EL11		1 N.O. & N.C.	MOMENTARY
1437569-1			164EL		-	MOMENTARY
PART No.	COMMENTS		MODEL NON DILTIGHT	MODEL DILTIGHT	CONTACTS	ACTION

THIS DRAWING IS A CONTROLLED DOCUMENT.		DWN CMM 11-4-87		 TE Connectivity				
		CHK JB 12-8-87						
DIMENSIONS: INCHES		APVD SMM 12-9-87		NAME ILUMINASTED PUSHBUTTON (164EL SERIES)				
		PRODUCT SPEC —						
		APPLICATION SPEC —						
MATERIAL —		WEIGHT —		SIZE A2	CAGE CODE 00779	DRAWING NO C=1437569-1	RESTRICTED TO —	
FINISH —		CUSTOMER DRAWING				SCALE NTS	SHEET 1 of 1	REV A1

Mouser Electronics

Authorized Distributor

Click to View Pricing, Inventory, Delivery & Lifecycle Information:

[TE Connectivity:](#)

[165EL511](#)