

LOC		DIST		REVISONS			
P	LTR	DESCRIPTION			DATE	DWN	APVD
		A2	REVISED	PER ECO-15-003687			
					10MAR2015	AP	DD

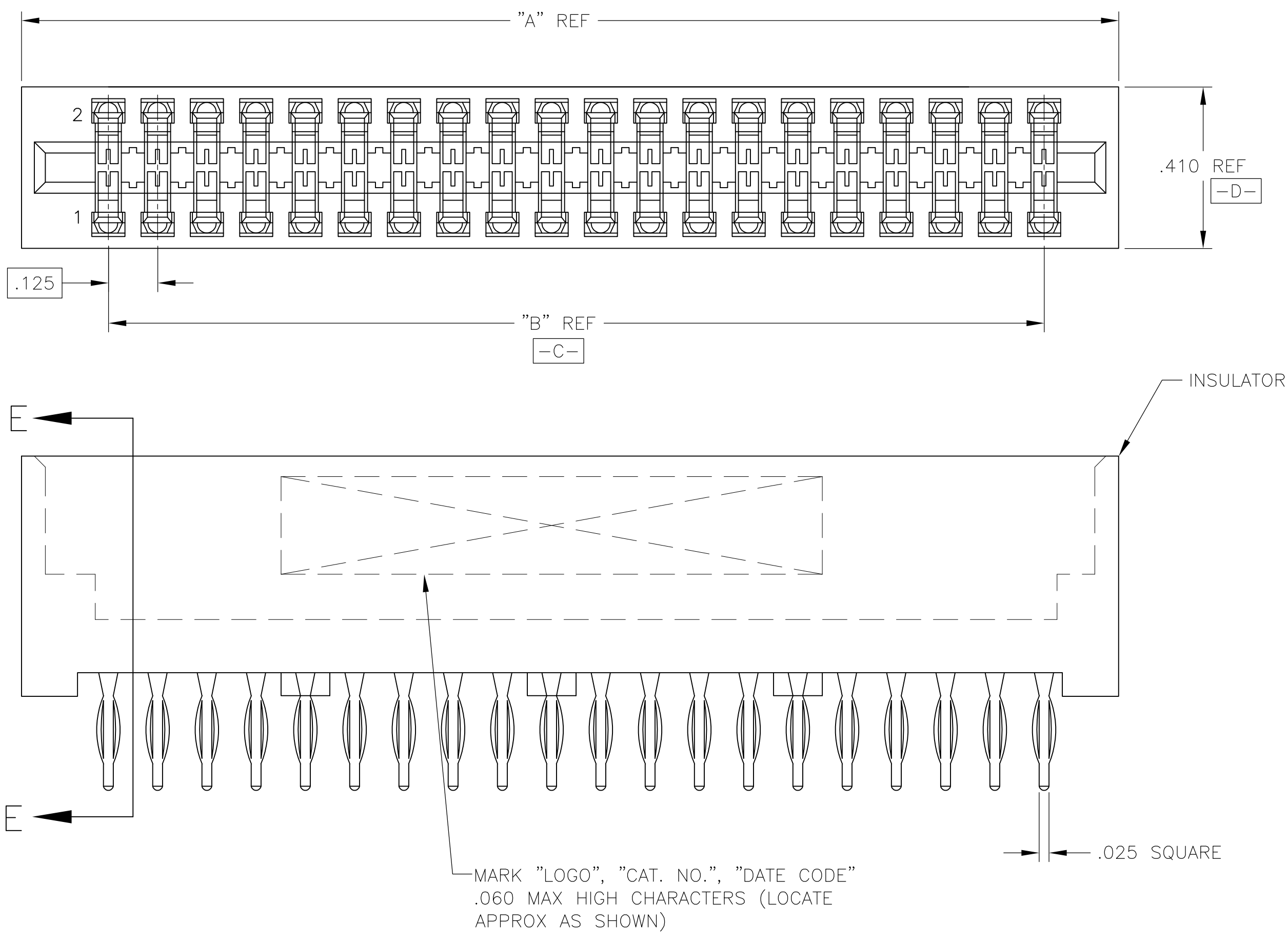
- 1
- INTERPRET GEOMETRIC CHARACTERISTIC SYMBOLS PER STANDARD ANSI Y14.5M (1982).
- △
- OBSOLETE PARTS: OBSOLETE CIS STREAMLINING PER D.RENAUD/D.SINISI

D

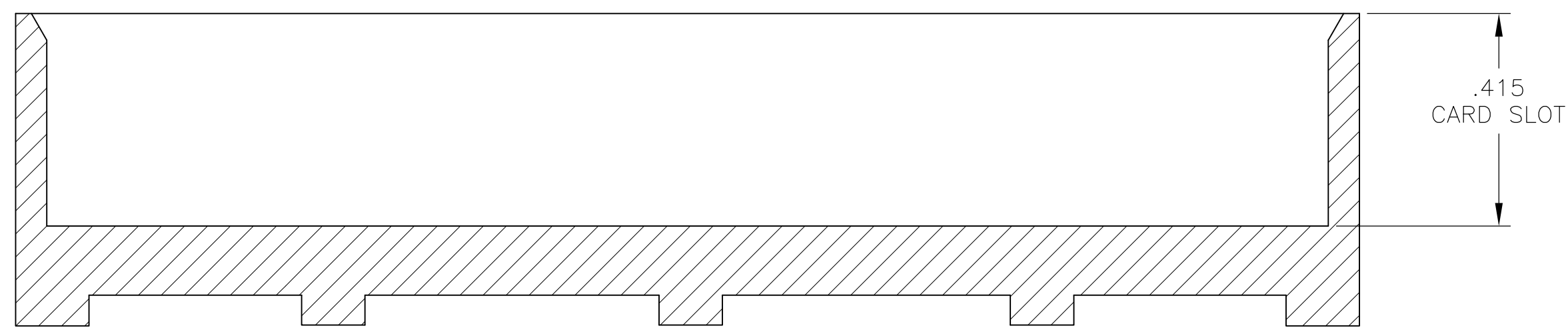
C

B

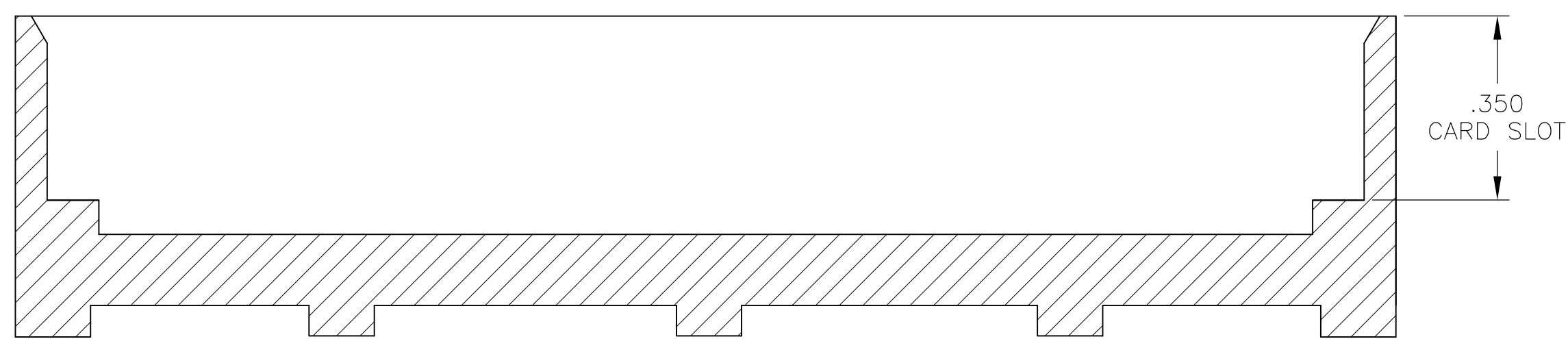
A



MOUNTING STYLE "01", 20 POSITION ILLUSTRATED
(ADDITIONAL MOUNTING STYLES AS SHOWN)



MOUNTING STYLE "04"



MOUNTING STYLE "13"

20244 D ** **

DRAWING NUMBER

DOUBLE READOUT

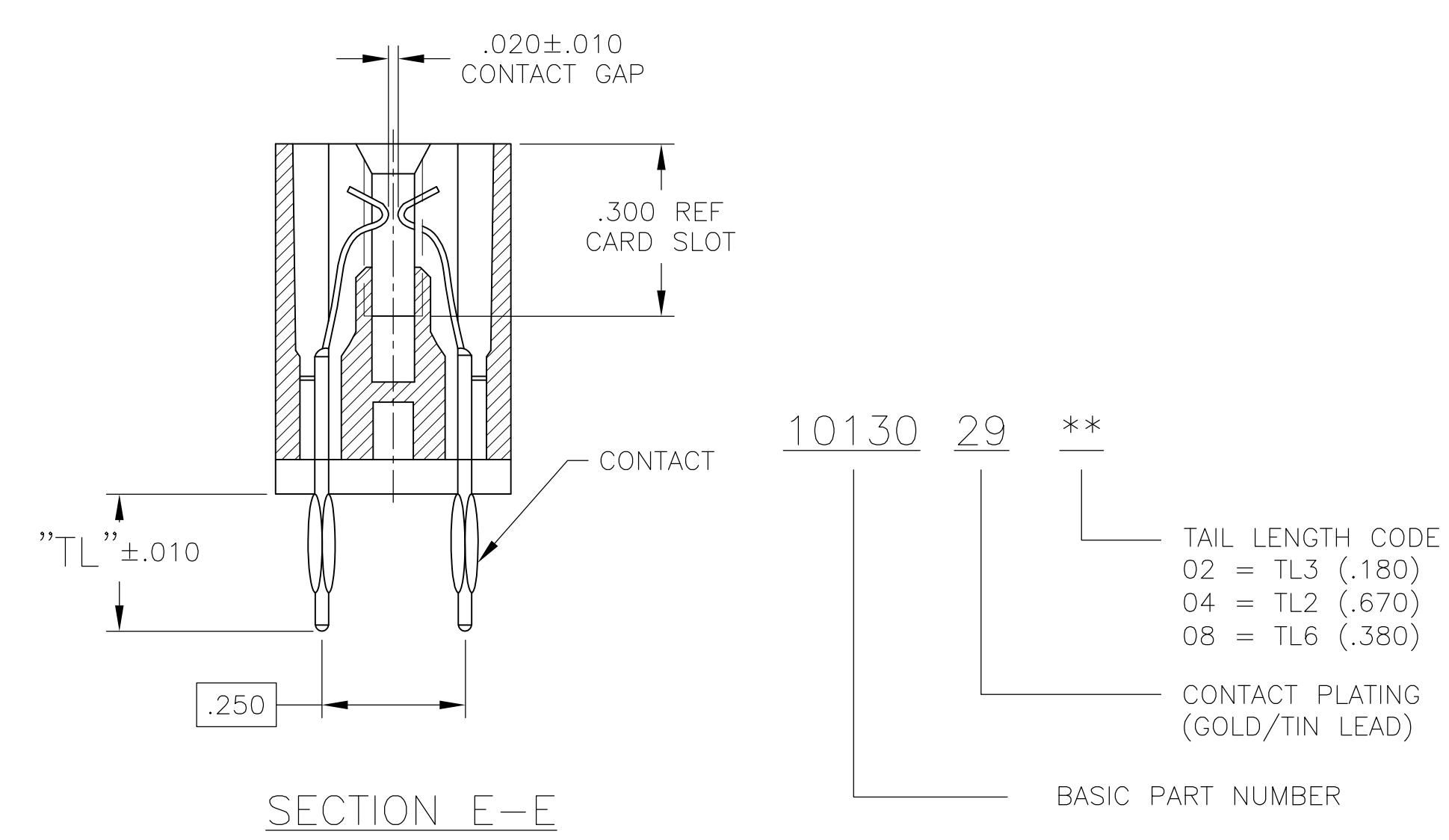
NUMBER OF CONTACT ROWS
03 THRU 65 POSITIONS

MOUNTING STYLE

01 = CLOSED END/.300 CARD SLOT/STANDOFF

04 = CLOSED END/.415 CARD SLOT/STANDOFF

13 = CLOSED END/.350 CARD SLOT/STANDOFF



CATALOG NUMBER CODE DESCRIPTION

C7 D ** PF 29 ** * M***

SERIES DESIGNATOR
(.125 X .250)

DOUBLE READOUT

NUMBER OF CONTACT ROWS
03 THRU 65 POSITIONS

TERMINATION STYLE
(PRESS FIT)

CONTACT PLATING
(GOLD/TIN LEAD)

SPECIAL OR CUSTOMER MODIFICATIONS
("M" FOLLOWED BY THREE DIGIT
FACTORY ASSIGNED NUMBER)

"TL" CONTACT TAIL LENGTH

2 = .670

3 = .180

6 = .380

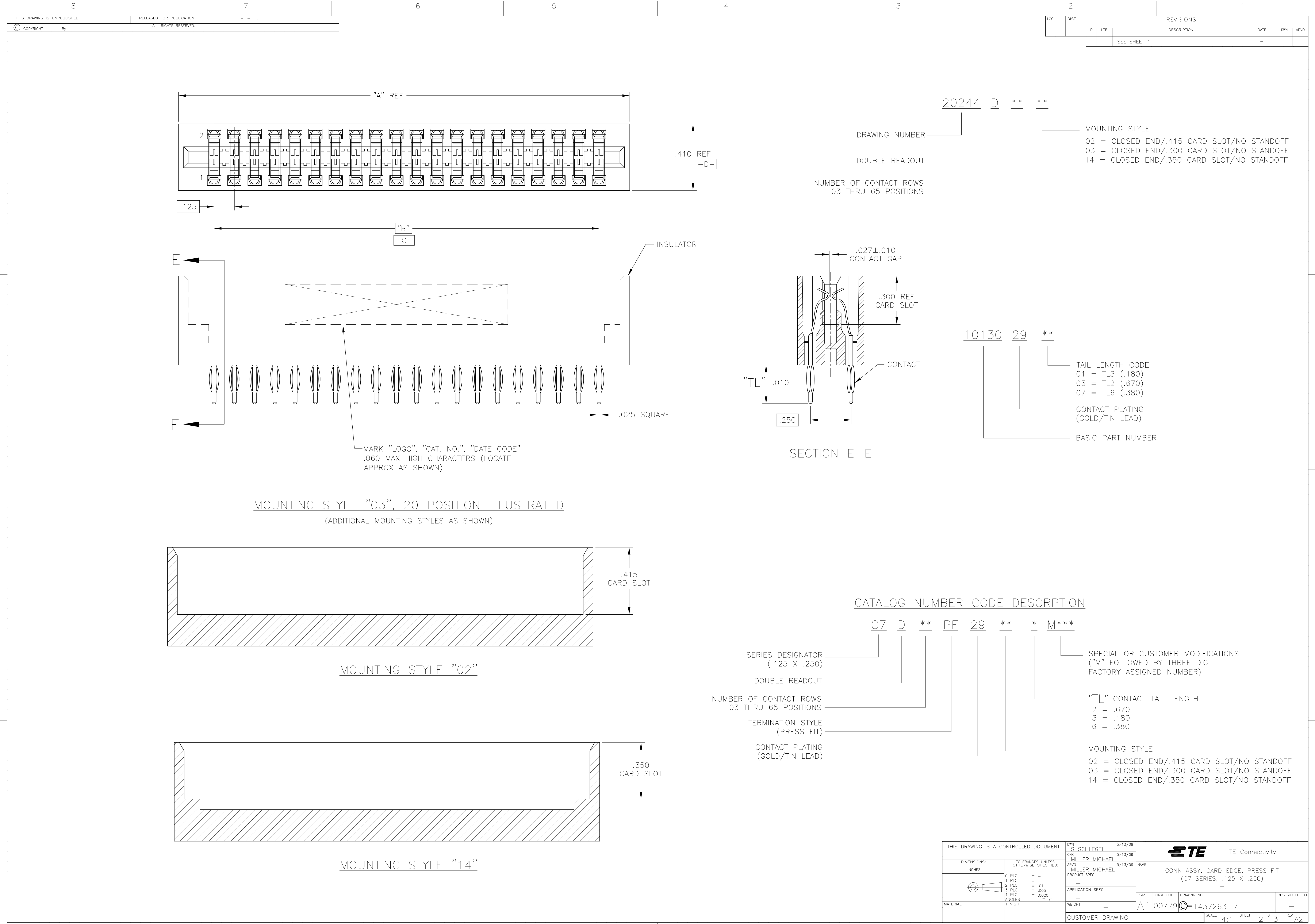
MOUNTING STYLE

01 = CLOSED END/.300 CARD SLOT/STANDOFF

04 = CLOSED END/.415 CARD SLOT/STANDOFF

13 = CLOSED END/.350 CARD SLOT/STANDOFF

THIS DRAWING IS A CONTROLLED DOCUMENT.		DWN S SCHLEGEL 5/13/09	TE Connectivity	
		CHK MILLER MICHAEL 5/13/09		
DIMENSIONS: INCHES		APVD MILLER MICHAEL 5/13/09		NAME
		PRODUCT SPEC		CONN ASSY, CARD EDGE, PRESS FIT (C7 SERIES, .125 X .250)
		APPLICATION SPEC		
MATERIAL -		WEIGHT -		SIZE A1
FINISH -		CUSTOMER DRAWING		SCALE 4:1
		SHEET 1 OF 3		REV A2



D

C

B

A

D

C

B

A

LOC		DIST		REVISONS			
P	L	T	R	DESCRIPTION	DATE	DWN	APVD
-	-	-	-	SEE SHEET 1	-	-	-

MOUNTING STYLE "03", 20 POSITION ILLUSTRATED
(ADDITIONAL MOUNTING STYLES AS SHOWN)


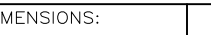
SECTION E-E

MOUNTING STYLE "02"

MOUNTING STYLE "14"

CATALOG NUMBER CODE DESCRIPTION

C7	D	**	PF	29	**	*	M***	
SERIES DESIGNATOR (.125 X .250)	DOUBLE READOUT	NUMBER OF CONTACT ROWS 03 THRU 65 POSITIONS	TERMINATION STYLE (PRESS FIT)	CONTACT PLATING (GOLD/TIN LEAD)	"TL" CONTACT TAIL LENGTH 2 = .670 3 = .180 6 = .380	MOUNTING STYLE 02 = CLOSED END/.415 CARD SLOT/NO STANDOFF 03 = CLOSED END/.300 CARD SLOT/NO STANDOFF 14 = CLOSED END/.350 CARD SLOT/NO STANDOFF	SPECIAL OR CUSTOMER MODIFICATIONS ("M" FOLLOWED BY THREE DIGIT FACTORY ASSIGNED NUMBER)	

THIS DRAWING IS A CONTROLLED DOCUMENT.		DWN S SCHLEGEL	5/13/09	 TE Connectivity	
DIMENSIONS: INCHES		CHK MILLER MICHAEL	5/13/09	NAME CONN ASSY, CARD EDGE, PRESS FIT (C7 SERIES, .125 X .250)	
		APVD MILLER MICHAEL	5/13/09	RESTRICTED TO	
		PRODUCT SPEC			
		APPLICATION SPEC			
		SIZE A1			
		CAGE CODE 00779			
TOLERANCES UNLESS OTHERWISE SPECIFIED:		WEIGHT —		DRAWING NO 1437263-7	
0 PLC ± —		CUSTOMER DRAWING		SCALE 4:1	
1 PLC ± —				SHEET 2 OF 3	
2 PLC ± .01				REV A2	
3 PLC ± .005					
4 PLC ± .0020					
ANGLES ± 2°					
MATERIAL —					
FINISH —					

Mouser Electronics

Authorized Distributor

Click to View Pricing, Inventory, Delivery & Lifecycle Information:

[TE Connectivity:](#)

[C7D50DS29B3](#)