

4

3

2

1

THIS DRAWING IS UNPUBLISHED.

RELEASED FOR PUBLICATION

© COPYRIGHT

ALL RIGHTS RESERVED.

LOC

DIST

REVISIONS

P	LTR	DESCRIPTION	DATE	DWN	APVD

D

C

B

A

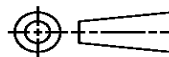
REPLACED BY OCEAN STYLE APPLICATOR PART NUMBER

FOR REPLACEMENT PARTS FOR APPLICATOR REFER TO ADDITIONAL PAGE(S). SPARE PARTS KIT (IF LISTED) WILL REMAIN AVAILABLE.

THE REPLACEMENT OCEAN STYLE APPLICATOR HAS THE SAME TERMINATOR/PRESS INTERFACE AS APPLICATOR

THIS DRAWING IS A CONTROLLED DOCUMENT.

DIMENSIONS:



TOLERANCES UNLESS OTHERWISE SPECIFIED:

0 PLC	±
1 PLC	±
2 PLC	±
3 PLC	±
4 PLC	±
ANGLES	±

MATERIAL

FINISH

DWN

CHK

APVD

PRODUCT SPEC

APPLICATION SPEC

WEIGHT

TE Connectivity

NAME

SIZE

CAGE CODE

DRAWING NO

RESTRICTED TO

A3

C-


SCALE

SHEET OF

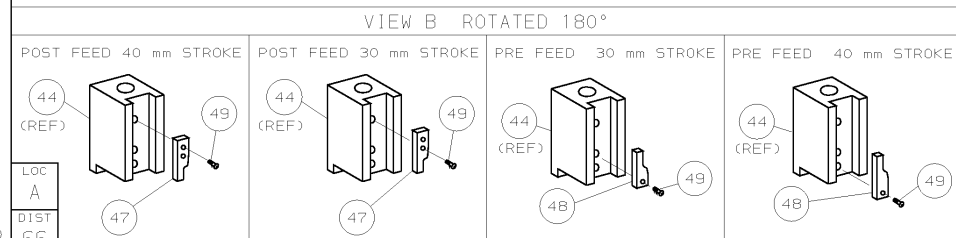
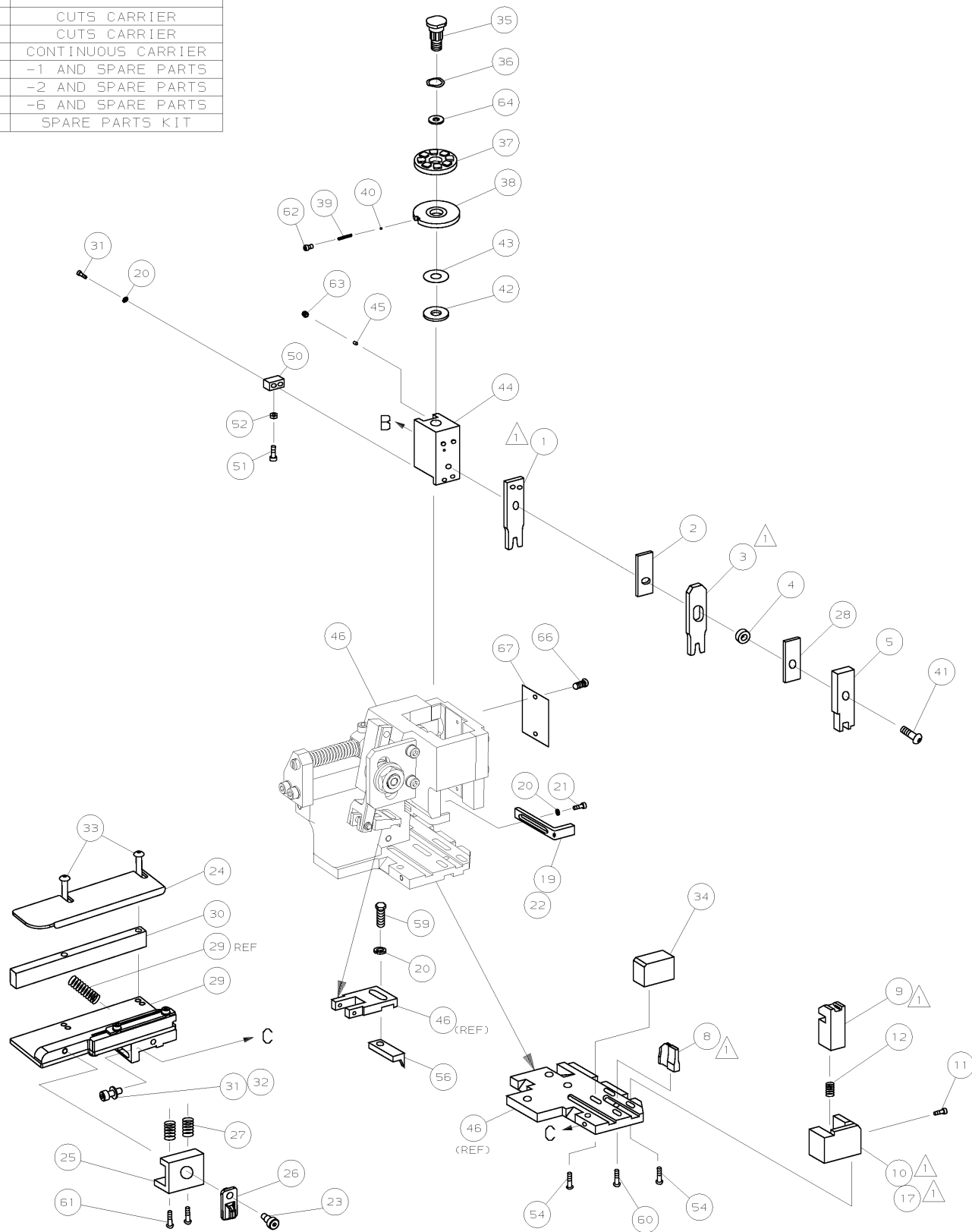
REV

1470-19 (3/11)

Pro/ENGINEER DRAWING

 RECOMMENDED SPARE PARTS.

2. GREASE RAM, CAM, CAM FOLLOWER AND FEED ROD LIGHTLY.
3. LUBRICATE DAILY PER THE APPLICATOR INSTRUCTION SHEET SUPPLIED WITH THE APPLICATOR.



SHORT POSITION  
GUIDE OFF WIRE BARREL

-	1	1	1	1	1	1	1426475	PRINT, APPLICATOR LOG SHEET	72		
-	1	1	1	1	1	1	1338705-1	DOCUMENTATION PACKAGE	71		
									70		
									69		
									68		
-	1	1	1	1	1	1	461264-1	PLATE, IDENTIFICATION	67		
-	2	2	2	2	2	2	21017-2	SCR,DRIVE (#2x.19) ID PLATE	66		
									65		
-	1	1	1	1	1	1	986950-1	WASHER, FLAT PRECISION	64		
-	1	1	1	1	1	1	3-18031-0	SCR,SKT SET (M6X6) RAM	63		
-	1	1	1	1	1	1	18023-9	SCR,5HC (M4X6) IN5 DISC	62		
-	2	2	2	2	2	2	1-18024-5	SCR,BHC (M5X25) DRAG	61		
-	1	1	1	1	1	1	18024-7	SCR,BHC (M4X10) ANVIL	60		
-	1	1	1	1	1	1	5-18022-2	SCR,HEX (M4X8) FEED FINGER	59		
									58		
									57		
-	1	1	1	1	1	1	1338685-1	PAWL, FEED	56		
									55		
-	4	4	4	4	4	4	18024-8	SCR,BHC (M4x12) SHEAR HOLDER	54		
									53		
-	1	1	1	1	1	1	18030-1	NUT,HEX (M3) HOLD DOWN	52		
-	1	1	1	1	1	1	811242-5	BUMPER, HOLDDOWN	51		
-	1	1	1	1	1	1	690753-2	SPACER, TONKER	50		
-	1	1	1	1	1	1	18024-3	SCR,BHC (M3X10) CAM	49		
-	-	1	-	-	1	-	1338675-1	CAM, PRE FEED 30 & 40 mm ST	48		
-	1	-	1	1	-	1	1338676-1	CAM, POST FEED 30 & 40 mm ST	47		
-	1	1	1	1	1	1	1320999-3	APPLICATOR BASIC SUBASSY	46		
-	1	1	1	1	1	1	690191-1	PLUG, NYLON	45		
-	1	1	1	1	1	1	1338660-1	RAM	44		
-	1	1	1	1	1	1	690125-1	WASHER, LAMINATED	43		
-	1	1	1	1	1	1	690124-1	WASHER, RAM	42		
-	1	1	1	1	1	1	2-18024-6	SCR,BHC (M8X25) RAM	41		
-	1	1	1	1	1	1	23241-1	BALL, STEEL	40		
-	1	1	1	1	1	1	2-22278-7	SPRING, COMPRESSION	39		
-	1	1	1	1	1	1	1320922-1	DISC, INSULATION	38		
-	1	1	1	1	1	1	354777-1	WIRE DISC, PLASTIC	37		
-	1	1	1	1	1	1	22480-5	WASHER, SPRING	36		
-	1	1	1	1	1	1	690212-1	POST, RAM	35		
-	1	1	1	1	1	1	1-1320934-2	SUPPORT, TERMINAL	34		
-	2	2	2	2	2	2	1-18024-0	SCR,BHC (M4X20) STRIP GUIDE	33		
-	1	1	1	1	1	1	18027-2	WASHER, FLAT (M4)	32		
-	3	3	3	3	3	3	1-18023-2	SCR,SKT CAP (M4X12) MOUNT BLOCK	31		
-	1	1	1	1	1	1	1-1320908-0	SPACER, STRIP GUIDE	30		
-	1	1	1	1	1	1	1633073-1	STRIP GUIDE PLATE ASSY	29		
-	1	1	1	1	1	1	1-455888-5	SPACER, FRONT SHEAR DEP	28		
-	2	2	2	2	2	2	1-22284-0	SPRING, DRAG	27		
-	1	1	1	1	1	1	356835-1	LEVER, DRAG RELEASE	26		
-	1	1	1	1	1	1	240792-1	DRAG, TERMINAL	25		
-	1	1	1	1	1	1	1320928-1	PLATE, STRIP GUIDE	24		
-	1	1	1	1	1	1	980371-4	SCR,5HC SHLD	23		
-	1	-	1	1	-	1	690472-2	STRIPPER	22		
-	1	1	1	1	1	1	1-18023-1	SCR,5HC (M4X10) STRIPPER	21		
-	4	4	4	4	4	4	18025-2	WASHER,LOCK (M4) STRIPPER	20		
-	-	1	-	-	1	-	690472-1	STRIPPER	19		
									18		
-	1	-	-	1	-	-	1338684-1	HOLDER, SHEAR, FRONT (NO-CUT)	17		
									16		
									15		
									14		
									13		
-	1	1	1	1	1	1	5-22280-0	SPRING, SHEAR	12		
-	1	1	1	1	1	1	356885-4	STOP, SHEAR	11		
-	-	1	1	-	1	1	1320921-1	HOLDER, SHEAR, FRONT (CUT)	10		
-	1	1	1	1	1	1	454276-1	SHEAR, FLOAT (FRONT)	9		
1	2	2	2	1	1	1	1333209-1	ANVIL	8		
									7		
									6		
-	1	1	1	1	1	1	3-455889-8	DEPRESSOR, SHEAR (FRONT)	5		
-	1	1	1	1	1	1	238011-4	SPACER, BLOCK CRIMPER	4		
1	2	2	2	1	1	1	1-1213077-0	CRIMPER, INSULATION	3		
-	1	1	1	1	1	1	455888-5	SPACER, CRIMPER	2		
1	2	2	2	1	1	1	456410-4	CRIMPER, WIRE	1		
-77	-76	-72	-71	-6	-2	-1	PART NO	DESCRIPTION	ITEM NO		
							← REVISION OF EACH ASSY NO (WHEN BLANK, USE DWG REVISION)				
QTY REQD PER ASSY							PARTS LIST				
LJL APP	JAN04 DATE	DIMENSIONS: mm (INCHES) DO NOT SCALE PRINT. TOLERANCES UNLESS OTHERWISE SPECIFIED: 1 PLC DEC ±- 2 PLC DEC ±- 3 PLC DEC ±- ANGLES ±- SURF TEXTURE, ✓	MATERIAL - HT TR - FIN -	DR M. CLIFFORD		APP 08JAN04	F. BACKHURST		AMP Type Electronics Harrisburg, PA 17105-3608		
				CHK -		REL 29JAN04	L. LOFTHOUSE				
				NAME		SIDE FEED HD-I APPLICATOR				MACHINE REF	
				SCALE -		DWG NO 1426475	SHEET 1 OF 1			REV A	
CASE CODE 00779 CUSTOMER AND ASSEMBLY DRAWING RESTRICTED TO -											

# Mouser Electronics

Authorized Distributor

Click to View Pricing, Inventory, Delivery & Lifecycle Information:

[TE Connectivity:](#)

[1426475-6](#)