
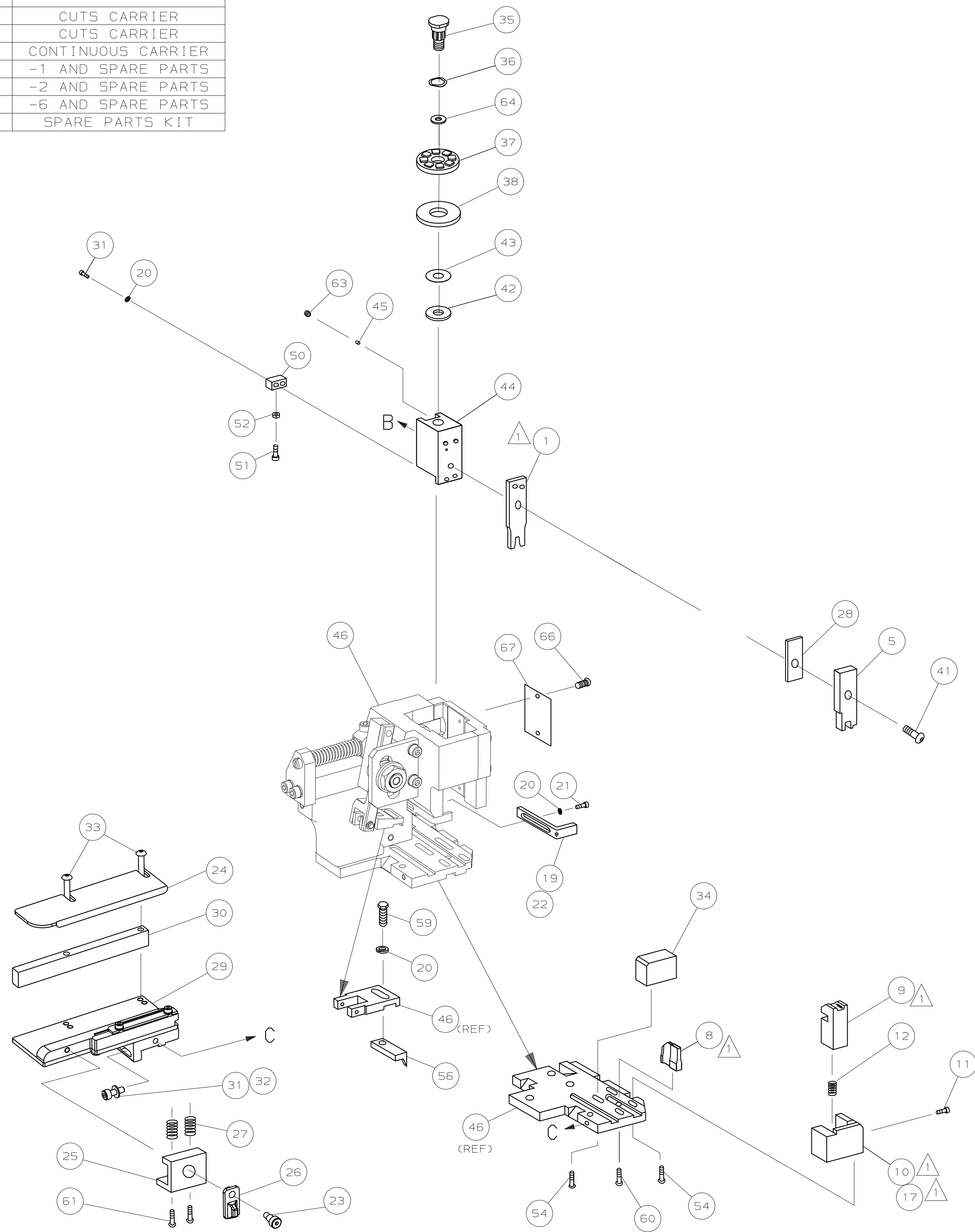
 1. RECOMMENDED SPARE PARTS.



2. GREASE RAM, CAM, CAM FOLLOWER AND FEED ROD LIGHTLY.

3. LUBRICATE DAILY PER THE APPLICATOR INSTRUCTION SHEET SUPPLIED WITH THE APPLICATOR.

 4. APPL. SPEC. 114-2036 TO BE USED FOR ALL OTHER CRIMP INFORMATION NOT STATED ABOVE.



DIMENSIONS: mm [INCHES]
DO NOT SCALE PRINT.
TOLERANCES UNLESS
OTHERWISE SPECIFIED:
1 PLC DEC \pm -
2 PLC DEC \pm -
3 PLC DEC \pm -
ANGLES \pm -
SURF TEXTURE: $\sqrt{\quad}$
REMOVE BURRS, BREAK
SHARP EDGES R0.38 MAX

MATL		-		HT TR		-		FIN		-			
DR 05NOV02		APP 05NOV02				AMP Incorporated Harrisburg, PA 17105-3608							
L.L.OFTHOUSE		F. BACKHURST											
CHK -		REL 09MAY03		L.L.OFTHOUSE									
NAME SIDE FEED HD-I APPLICATOR										MACHINE HD-I		REF APPL	
SCALE -				Dwg NO		1426397				SHEET 1 OF 1		REV B	

	-	1	1	1	1	1	1	1426397	PRINT, APPLICATOR LOG SHEET	73
	-	1	1	1	1	1	1	1338705-1	DOCUMENTATION PACKAGE	72
										71
										70
										69
	-	1	1	1	1	1	1	461264-1	PLATE, IDENTIFICATION	68
	-	2	2	2	2	2	2	21017-2	SCR,DRIVE (#2x.19) ID PLATE	67
										66
	-	1	1	1	1	1	1	986950-1	WASHER, FLAT PRECISION	65
	-	1	1	1	1	1	1	3-18031-0	SCR,SKT SET(M6X6) RAM	64
										63
	-	2	2	2	2	2	2	2-18032-5	SCR,SET(M5X20) DRAG	62
	-	1	1	1	1	1	1	18024-7	SCR,BHC(M4X10) ANVIL	61
	-	1	1	1	1	1	1	5-18022-2	SCR,HEX(M4X8)FEED FINGER	60
										59
										58
	-	1	1	1	1	1	1	1338685-1	PAWL, FEED	57
										56
	-	4	4	4	4	4	4	18024-8	SCR,BHC(M4x12)SHEAR HOLDER	55
										54
	-	1	1	1	1	1	1	18030-1	NUT, HEX(M3)HOLD DOWN	53
	-	1	1	1	1	1	1	811242-5	BUMPER, HOLDDOWN	52
	-	1	1	1	1	1	1	690753-2	SPACER, TONKER	51
	-	1	1	1	1	1	1	18024-3	SCR,BHC(M3X10) CAM	50
	-	-	1	-	-	1	-	1338675-1	CAM, PRE FEED 30 & 40 mm ST	49
	-	1	-	1	1	-	1	1338676-1	CAM, POST FEED 30 & 40 mm ST	48
	-	1	1	1	1	1	1	1320999-3	APPLICATOR BASIC SUBASSY	47
	-	1	1	1	1	1	1	690191-1	PLUG, NYLON	46
	-	1	1	1	1	1	1	1338660-1	RAM	45
	-	1	1	1	1	1	1	690125-1	WASHER, LAMINATED	44
	-	1	1	1	1	1	1	690124-1	WASHER, RAM	43
	-	1	1	1	1	1	1	2-18024-6	SCR,BHC(M8X25) RAM	42
										41
										40
	-	1	1	1	1	1	1	690223-2	SPACER, INSULATION DISC	39
	-	1	1	1	1	1	1	354777-1	WIRE DISC, PLASTIC	38
	-	1	1	1	1	1	1	22480-5	WASHER, SPRING	37
	-	1	1	1	1	1	1	690212-1	POST, RAM	36
	-	1	1	1	1	1	1	1320934-5	SUPPORT, TERMINAL	35
	-	2	2	2	2	2	2	1-18024-0	SCR,BHC(M4X20)STRIP GUIDE	34
	-	1	1	1	1	1	1	18027-2	WASHER, FLAT(M4)	33
	-	3	3	3	3	3	3	1-18023-2	SCR,SKT CAP(M4X12)MOUNT BLOCK	32
	-	1	1	1	1	1	1	1320908-9	SPACER, STRIP GUIDE	31
	-	1	1	1	1	1	1	1633073-1	STRIP GUIDE PLATE ASSY	30
	-	1	1	1	1	1	1	1-455888-0	SPACER, FRONT SHEAR DEP	29
	-	2	2	2	2	2	2	1-22284-0	SPRING, DRAG	28
	-	1	1	1	1	1	1	356835-1	LEVER, DRAG RELEASE	27
	-	1	1	1	1	1	1	240792-1	DRAG, TERMINAL	26
	-	1	1	1	1	1	1	1320928-1	PLATE, STRIP GUIDE	25
	-	1	1	1	1	1	1	980371-4	SCR,SHC SHLD	24
	-	1	-	1	1	-	1	690472-2	STRIPPER	23
	-	1	1	1	1	1	1	1-18023-1	SCR,SHC(M4X10)STRIPPER	22
	-	4	4	4	4	4	4	18025-2	WASHER,LOCK(M4)STRIPPER	21
	-	-	1	-	-	1	-	690472-1	STRIPPER	20
										19
	-	1	-	-	1	-	-	1338684-1	HOLDER, SHEAR, FRONT (NO-CUT)	18
										17
										16
										15
										14
										13
	-	1	1	1	1	1	1	5-22280-0	SPRING, SHEAR	12
	-	1	1	1	1	1	1	356885-4	STOP, SHEAR	11
	-	-	1	1	-	1	1	1320921-1	HOLDER, SHEAR, FRONT (CUT)	10
	-	1	1	1	1	1	1	454276-1	SHEAR, FLOAT (FRONT)	9
	1	2	2	2	1	1	1	1333227-9	ANVIL	8
										7
										6
	-	1	1	1	1	1	1	455889-9	DEPRESSOR, SHEAR (FRONT)	5
										4
										3
										2
	1	2	2	2	1	1	1	1-456405-5	CRIMPER, WIRE	1
-77	-76	-72	-71	-6	-2	-1		PART NO	DESCRIPTION	ITEM NO
← REVISION OF EACH ASSY NO (WHEN BLANK, USE DWG REVISION)										

Mouser Electronics

Authorized Distributor

Click to View Pricing, Inventory, Delivery & Lifecycle Information:

[TE Connectivity:](#)

[1426397-6](#)