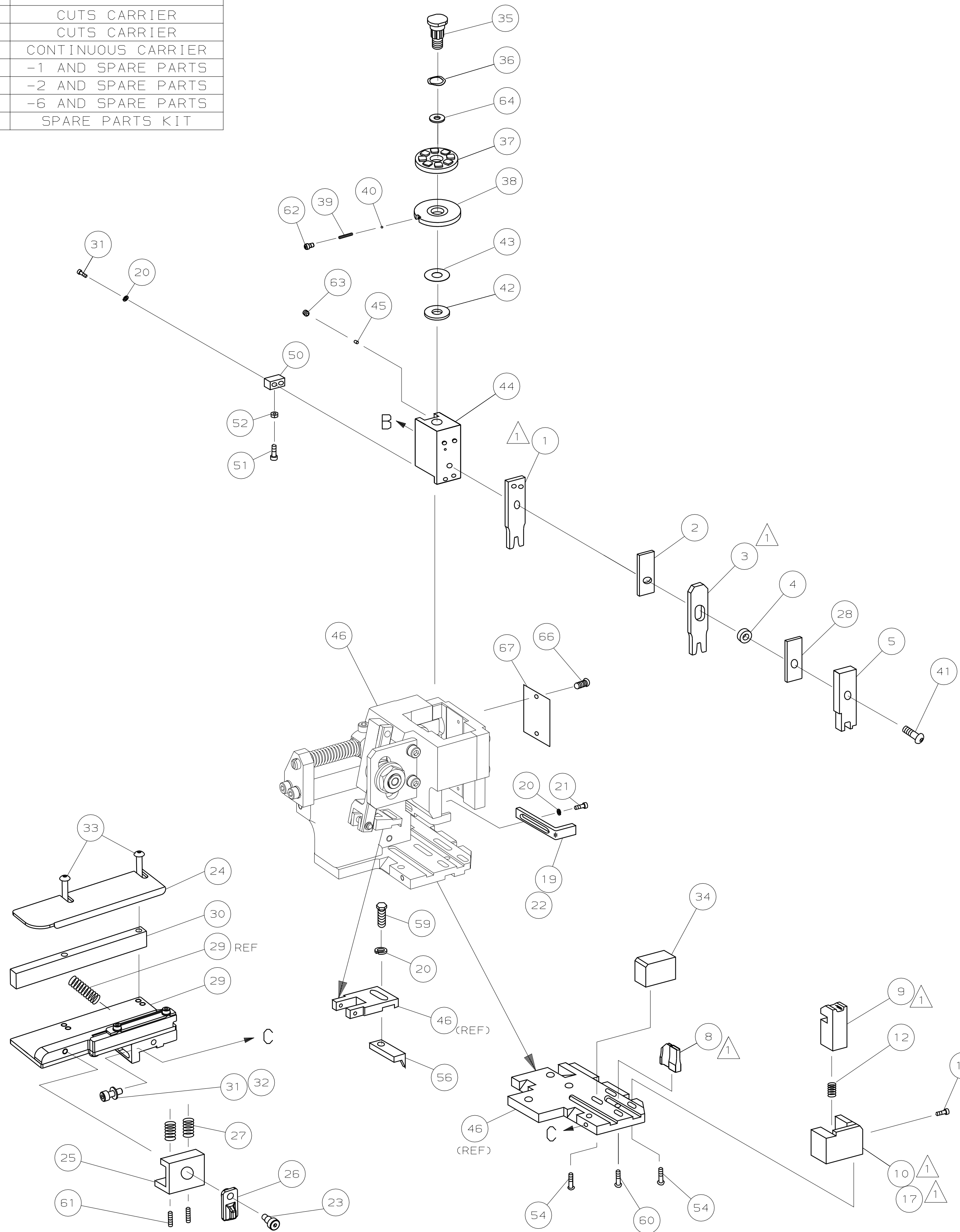



1. RECOMMENDED SPARE PARTS.
2. GREASE RAM, CAM, CAM FOLLOWER AND FEED ROD LIGHTLY.
3. LUBRICATE DAILY PER THE APPLICATOR INSTRUCTION SHEET SUPPLIED WITH THE APPLICATOR.



GUIDE OFF
INSULATION BARREL

DIMENSIONS: mm [INCHES]		MATL		HT TR		FIN	
DO NOT SCALE PRINT.							
TOLERANCES UNLESS OTHERWISE SPECIFIED:							
1 PLC DEC ± 0.5 [0.2 IN]		DR 13NOV01	APP 13NOV01			AMP Incorporated Harrisburg, PA 17105-3608	
2 PLC DEC \pm		L. LOFTHOUSE	F. BACKHURST				
3 PLC DEC \pm		CHK	REL 14-12-01	L. LOFTHOUSE			
ANGLES \pm		NAME SIDE FEED HD-I APPLICATOR				MACHINE HD-I	REF
SURF TEXTURE: \checkmark						APPL	
REMOVE BURRS, BREAK SHARP EDGES RO. 38 MAX		SCALE	D	DWG NO	1426268		SHEET 1 OF 1
							REV C

	-	1	1	1	1	1	1	1426268	PRINT, APPLICATOR LOG SHEET	73
	-	1	1	1	1	1	1	1338705-1	DOCUMENTATION PACKAGE	72
										71
										70
										69
										68
	-	1	1	1	1	1	1	461264-1	PLATE, IDENTIFICATION	67
	-	2	2	2	2	2	2	21017-2	SCR,DRIVE (#2x.19) ID PLATE	66
										65
	-	1	1	1	1	1	1	986950-1	WASHER, FLAT PRECISION	64
	-	1	1	1	1	1	1	3-18031-0	SCR,SKT SET(M6X6)RAM	63
	-	1	1	1	1	1	1	18023-9	SCR,SHC(M4X6)INS DISC	62
	-	2	2	2	2	2	2	2-18032-5	SCR,SKT SET(M5X20)DRAG	61
	-	1	1	1	1	1	1	18024-7	SCR,BHC(M4X10)ANVIL	60
	-	1	1	1	1	1	1	5-18022-2	SCR,HEX(M4X8)FEED FINGER	59
										58
										57
	-	1	1	1	1	1	1	1338685-1	PAWL, FEED	56
										55
	-	4	4	4	4	4	4	18024-8	SCR,BHC(M4x12)SHEAR HOLDER	54
										53
	-	1	1	1	1	1	1	18030-1	NUT, HEX(M3)HOLD DOWN	52
	-	1	1	1	1	1	1	811242-5	BUMPER, HOLDDOWN	51
	-	1	1	1	1	1	1	690753-2	SPACER, TONKER	50
	-	1	1	1	1	1	1	18024-3	SCR,BHC(M3X10)CAM	49
	-	-	-	-	-	-	-	1338675-1	CAM, PRE FEED 30 & 40 mm ST	48
	-	1	-	1	1	-	1	1338676-1	CAM, POST FEED 30 & 40 mm ST	47
	-	1	1	1	1	1	1	1320999-3	APPLICATOR BASIC SUBASSY	46
	-	1	1	1	1	1	1	690191-1	PLUG, NYLON	45
	-	1	1	1	1	1	1	1338660-1	RAM	44
	-	1	1	1	1	1	1	690125-1	WASHER, LAMINATED	43
	-	1	1	1	1	1	1	690124-1	WASHER, RAM	42
	-	1	1	1	1	1	1	2-18024-6	SCR,BHC(M8X25)RAM	41
	-	1	1	1	1	1	1	23241-1	BALL, STEEL	40
	-	1	1	1	1	1	1	2-22278-7	SPRING, COMPRESSION	39
	-	1	1	1	1	1	1	1320922-1	DISC, INSULATION	38
	-	1	1	1	1	1	1	354777-1	WIRE DISC, PLASTIC	37
	-	1	1	1	1	1	1	22480-5	WASHER, SPRING	36
	-	1	1	1	1	1	1	690212-1	POST, RAM	35
	-	1	1	1	1	1	1	1320934-1	SUPPORT, TERMINAL	34
	-	2	2	2	2	2	2	1-18024-0	SCR,BHC(M4X20)STRIP GUIDE	33
	-	1	1	1	1	1	1	18027-2	WASHER, FLAT(M4)	32
	-	3	3	3	3	3	3	1-18023-2	SCR,SKT CAP(M4X12)MOUNT BLOCK	31
	-	1	1	1	1	1	1	1320908-1	SPACER, STRIP GUIDE	30
	-	1	1	1	1	1	1	1633073-1	STRIP GUIDE PLATE ASSY	29
	-	1	1	1	1	1	1	1-455888-0	SPACER, FRONT SHEAR DEP	28
	-	2	2	2	2	2	2	1-22284-0	SPRING, DRAG	27
	-	1	1	1	1	1	1	356835-1	LEVER, DRAG RELEASE	26
	-	1	1	1	1	1	1	240792-1	DRAG, TERMINAL	25
	-	1	1	1	1	1	1	1320928-1	PLATE, STRIP GUIDE	24
	-	1	1	1	1	1	1	980371-4	SCR,SHC SHLD	23
	-	1	-	1	1	-	1	690472-2	STRIPPER	22
	-	1	1	1	1	1	1	1-18023-1	SCR,SHC(M4X10)STRIPPER	21
	-	4	4	4	4	4	4	18025-2	WASHER,LOCK(M4)STRIPPER	20
	-	-	1	-	-	1	-	690472-1	STRIPPER	19
	-	1	-	-	1	-	-	1338684-1	HOLDER, SHEAR, FRONT (NO-CUT)	18
										17
										16
										15
										14
										13
	-	1	1	1	1	1	1	3-22280-3	SPRING, SHEAR	12
	-	1	1	1	1	1	1	356885-4	STOP, SHEAR	11
	-	-	1	1	-	1	1	1320921-1	HOLDER, SHEAR, FRONT (CUT)	10
	-	1	1	1	1	1	1	462006-1	SHEAR, FLOAT (FRONT)	9
	1	2	2	2	1	1	1	2-1333203-3	ANVIL	8
										7
										6
	-	1	1	1	1	1	1	2-455889-0	DEPRESSOR, SHEAR (FRONT)	5
	-	1	1	1	1	1	1	238011-7	SPACER, BLOCK CRIMPER	4
	1	2	2	2	1	1	1	1424909-6	CRIMPER, INSULATION	3
	-	1	1	1	1	1	1	455888-9	SPACER, CRIMPER	2
	1	2	2	2	1	1	1	4-456404-7	CRIMPER, WIRE	1
-77	-76	-72	-71	-6	-2	-1		PART NO	DESCRIPTION	ITEM NO
								← REVISION OF EACH ASSY NO (WHEN BLANK, USE DWG REVISION)		
								PARTS LIST		
QTY READ PER ASSY										

Mouser Electronics

Authorized Distributor

Click to View Pricing, Inventory, Delivery & Lifecycle Information:

[TE Connectivity:](#)

[1426268-2](#)