

4

3

2

1

THIS DRAWING IS UNPUBLISHED.

RELEASED FOR PUBLICATION

© COPYRIGHT

ALL RIGHTS RESERVED.

LOC

DIST

REVISIONS

P	LTR	DESCRIPTION	DATE	DWN	APVD
	C2	ECR-14-010131	18AUG2014	GK	HMR

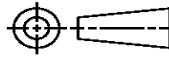
REPLACED BY OCEAN STYLE APPLICATOR PART
NUMBER 2266323-1

FOR REPLACEMENT PARTS FOR APPLICATOR 1426254
REFER TO ADDITIONAL PAGE(S). SPARE PARTS KIT (IF LISTED)
WILL REMAIN AVAILABLE.

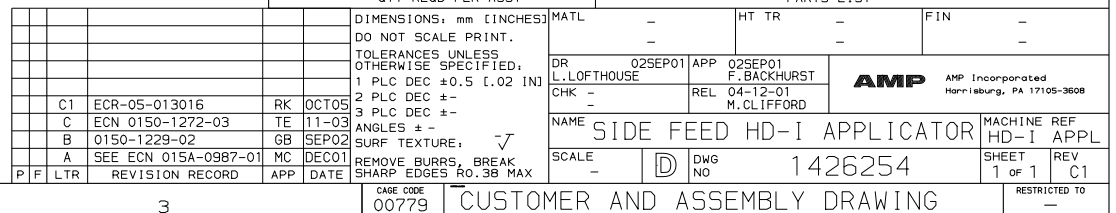
THE REPLACEMENT OCEAN STYLE APPLICATOR HAS THE
SAME TERMINATOR/PRESS INTERFACE AS APPLICATOR
1426254

THIS DRAWING IS A CONTROLLED DOCUMENT.		DWN	GOPALAKRISHNA HV			
		CHK	RAGHAVENDRA			
		APVD	RAGHAVENDRA			
		PRODUCT SPEC				
		APPLICATION SPEC				
		WEIGHT				
		CUSTOMER DRAWING		SCALE	SHEET 1 OF 2	
				REV	C2	

TE Connectivity			
SIDE FEED HD-I APPLICATOR			
SIZE	CAGE CODE	DRAWING NO	RESTRICTED TO
A3		©- 1426254	

DIMENSIONS:	TOLERANCES UNLESS OTHERWISE SPECIFIED:
	0 PLC ± 1 PLC ± 2 PLC ± 3 PLC ± 4 PLC ± ANGLES ± FINISH
MATERIAL	

AMP 1756 REV 3-92 27-OCT-05 13:33:14 us024474



-	1	1	1	1	1	1	1	1490525-3	DEPRESSOR, WIRE	73	
-	1	1	1	1	1	1	1	1426254	PRINT, APPLICATOR LOG SHEET	72	
-	1	1	1	1	1	1	1	1338705-1	DOCUMENTATION PACKAGE	71	
-	3	3	3	3	3	3	3	2-23147-1	SPRING, DEPRESSOR	70	
-	1	1	1	1	1	1	1	1490524-1	SPACER, DEPRESSOR	69	
-	2	2	2	2	2	2	2	18025-1	WASHER, LOCK (M3) STR GDE	68	
-	1	1	1	1	1	1	1	461264-1	PLATE, IDENTIFICATION	67	
-	2	2	2	2	2	2	2	21017-2	SCR, DRIVE (#2x.19) ID PLATE	66	
-	1	1	1	1	1	1	1	1424350-1	HOLDER, PIN, WIRED	65	
-	1	1	1	1	1	1	1	986950-1	WASHER, FLAT PRECISION	64	
-	1	1	1	1	1	1	1	3-18031-0	SCR, SKT SET (M6X6) RAM	63	
-	1	1	1	1	1	1	1	18023-9	SCR, SHC (M4X6) INS DISC	62	
-	2	2	2	2	2	2	2	2-18032-5	SCR, SET (M5X20) DRAG	61	
-	1	1	1	1	1	1	1	18024-7	SCR, BHC (M4X10) ANVIL	60	
-	1	1	1	1	1	1	1	5-18022-2	SCR, HEX (M4X8) FEED FINGER	59	
										58	
										57	
-	1	1	1	1	1	1	1	1338683-1	PAWL, FEED	56	
-	1	-	-	1	-	-	-	1338723-1	HOLDER, SHEAR, REAR (NO CUT)	55	
-	4	4	4	4	4	4	4	18024-8	SCR, BHC (M4X12) SHEAR HOLDER	54	
-	2	2	2	2	2	2	2	1-18023-3	SCR, SHC (M4X16) TERM HLD DWN	53	
										52	
										51	
										50	
-	1	1	1	1	1	1	1	18024-3	SCR, BHC (M3X10) CAM	49	
-	-	1	-	-	1	-	-	1338675-1	CAM, PRE FEED 30 & 40 mm ST	48	
-	1	-	1	1	-	1	-	1338676-1	CAM, POST FEED 30 & 40 mm ST	47	
-	1	1	1	1	1	1	1	1320999-3	APPLICATOR BASIC SUBASSY	46	
-	1	1	1	1	1	1	1	690191-1	PLUG, NYLON	45	
-	1	1	1	1	1	1	1	1338660-1	RAM	44	
-	1	1	1	1	1	1	1	690125-1	WASHER, LAMINATED	43	
-	1	1	1	1	1	1	1	690124-1	WASHER, RAM	42	
-	1	1	1	1	1	1	1	2-18024-6	SCR, BHC (M8X25) RAM	41	
-	1	1	1	1	1	1	1	23241-1	BALL, STEEL	40	
-	1	1	1	1	1	1	1	2-22278-7	SPRING, COMPRESSION	39	
-	1	1	1	1	1	1	1	1320922-1	DISC, INSULATION	38	
-	1	1	1	1	1	1	1	354777-1	WIRE DISC, PLASTIC	37	
-	1	1	1	1	1	1	1	22480-5	WASHER, SPRING	36	
-	1	1	1	1	1	1	1	690212-1	POST, RAM	35	
										34	
-	2	2	2	2	2	2	2	18023-2	SCREW, SHC (M3X6) FRT STRP GDE	33	
-	1	1	1	1	1	1	1	18027-2	WASHER, FLAT (M4)	32	
-	1	1	1	1	1	1	1	1-18023-2	SCR, SKT CAP (M4X12) MOUNT BLOCK	31	
										30	
-	1	1	1	1	1	1	1	1633082-1	STRIP GUIDE PLATE ASSY	29	
-	1	1	1	1	1	1	1	1-455888-5	SPACER, FRONT SHEAR DEP	28	
-	2	2	2	2	2	2	2	1-22284-0	SPRING, DRAG	27	
-	1	1	1	1	1	1	1	356835-1	LEVER, DRAG RELEASE	26	
-	1	1	1	1	1	1	1	240792-1	DRAG, TERMINAL	25	
-	1	1	1	1	1	1	1	1-690487-7	GUIDE, STRIP (FRONT)	24	
-	1	1	1	1	1	1	1	980371-4	SCR, SHC SHLD	23	
-	1	-	1	1	-	1	-	690472-6	STRIPPER	22	
-	1	1	1	1	1	1	1	1-18023-1	SCR, SHC (M4X10) STRIPPER	21	
-	4	4	4	4	4	4	4	18025-2	WASHER, LOCK (M4) STRIPPER	20	
-	-	1	-	-	1	-	-	690472-5	STRIPPER	19	
-	1	1	1	1	1	1	1	2-690518-9	HOLDER, TERMINAL	18	
-	1	-	-	1	-	1	-	1338684-1	HOLDER, SHEAR, FRONT (NO-CUT)	17	
-	2	2	2	2	2	2	2	18023-2	SCR, SHC (M3X6) REAR SHEAR PL	16	
-	1	1	1	1	1	1	1	1-690691-1	PLATE, SHEAR (REAR)	15	
-	-	1	1	-	1	1	-	1320920-1	HOLDER, SHEAR, REAR (CUT)	14	
-	1	1	1	1	1	1	1	690463-1	SHEAR, FLOAT (REAR)	13	
-	2	2	2	2	2	2	2	5-22280-0	SPRING, SHEAR	12	
-	2	2	2	2	2	2	2	356885-4	STOP, SHEAR	11	
-	-	1	1	-	1	1	1	1320921-1	HOLDER, SHEAR, FRONT (CUT)	10	
-	1	1	1	1	1	1	1	462006-1	SHEAR, FLOAT (FRONT)	9	
1	2	2	2	1	1	1	1	3-1333201-6	ANVIL	8	
-	1	1	1	1	1	1	1	4-240641-6	SPACER, DEPRESSOR (REAR)	7	
-	1	1	1	1	1	1	1	690468-2	DEPRESSOR, SHEAR (REAR)	6	
-	1	1	1	1	1	1	1	2-455889-0	DEPRESSOR, SHEAR (FRONT)	5	
-	1	1	1	1	1	1	1	238011-7	SPACER, BLOCK CRIMPER	4	
1	2	2	2	1	1	1	1	8-456135-3	CRIMPER, INSULATION	3	
										2	
1	2	2	2	1	1	1	1	2-456402-5	CRIMPER, WIRE	1	
-77	-76	-72	-71	-6	-2	-1		PART NO	DESCRIPTION	ITEM NO	
								← REVISION OF EACH ASSY NO (WHEN BLANK, USE DWG REVISION)			
								PARTS LIST			
								QTY	REQD	PFR	ASSY

Mouser Electronics

Authorized Distributor

Click to View Pricing, Inventory, Delivery & Lifecycle Information:

[TE Connectivity:](#)

[1426254-6](#)