

4

3

2

1

THIS DRAWING IS UNPUBLISHED.

RELEASED FOR PUBLICATION

© COPYRIGHT

ALL RIGHTS RESERVED.

LOC

DIST


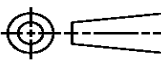
REVISIONS


P	LTR	DESCRIPTION	DATE	DWN	APVD
	D1	ECR-14-002338	18FEB2014	GK	HMR

REPLACED BY OCEAN STYLE APPLICATOR PART
NUMBER 2151379-1

FOR REPLACEMENT PARTS FOR APPLICATOR 1426197
REFER TO ADDITIONAL PAGE(S). SPARE PARTS KIT (IF LISTED)
WILL REMAIN AVAILABLE.

THE REPLACEMENT OCEAN STYLE APPLICATOR HAS THE
SAME TERMINATOR/PRESS INTERFACE AS APPLICATOR
1426197

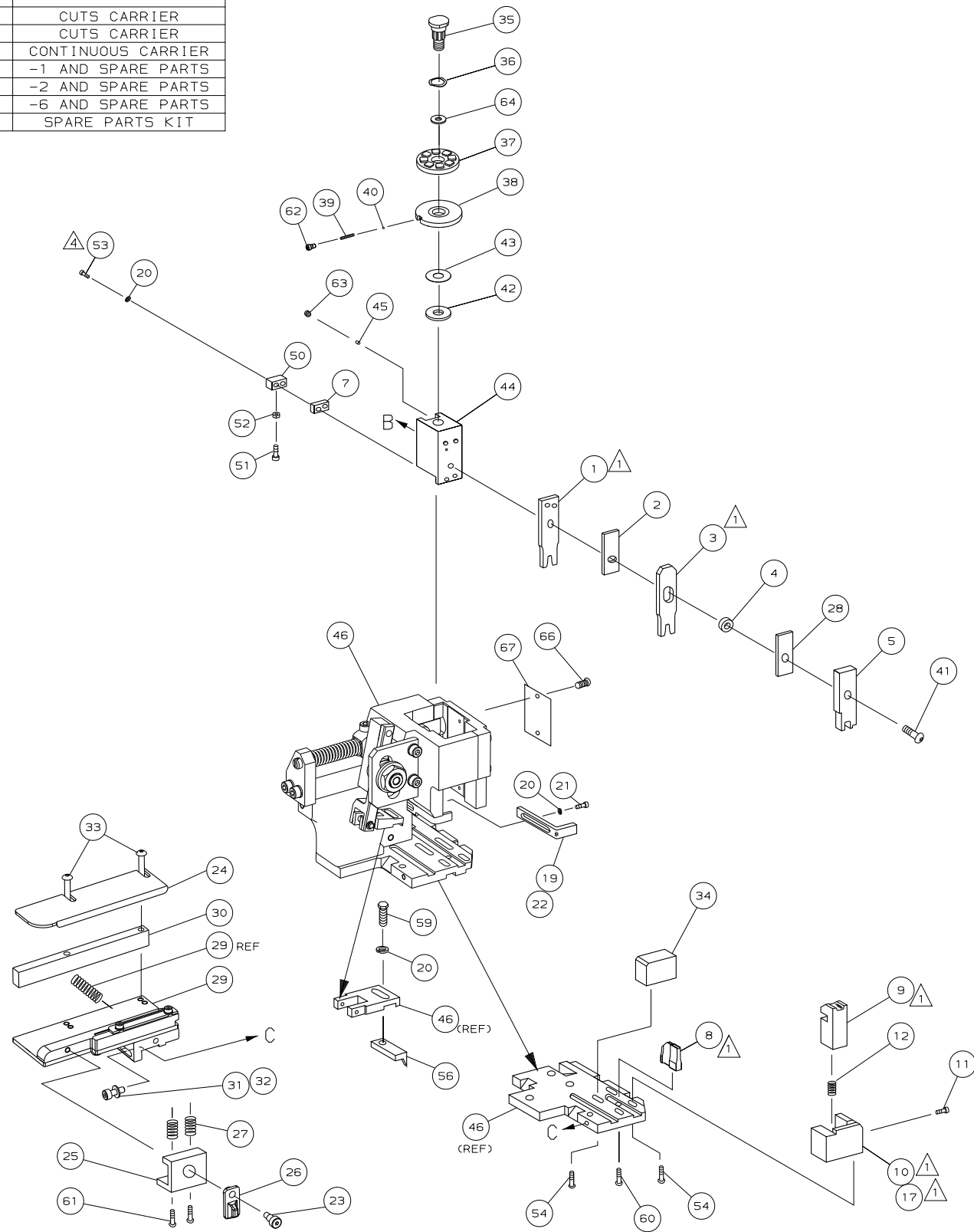
THIS DRAWING IS A CONTROLLED DOCUMENT.		DWN GOPALAKRISHNA HV		 TE Connectivity			
DIMENSIONS:		CHK RAGHAVENDRA					
		APVD RAGHAVENDRA		NAME SIDE FEED HD-I APPLICATOR			
		PRODUCT SPEC					
		APPLICATION SPEC					
MATERIAL		WEIGHT		SIZE A3	CAGE CODE	DRAWING NO C- 1426197	RESTRICTED TO
FINISH		CUSTOMER DRAWING		SCALE		SHEET 1 OF 2	REV D1


 **1** RECOMMENDED SPARE PARTS.

2. GREASE RAM, CAM, CAM FOLLOWER AND FEED ROD LIGHTLY.

3. LUBRICATE DAILY PER THE APPLICATOR INSTRUCTION SHEET SUPPLIED WITH THE APPLICATOR.

4 CUT TO LENGTH AT ASSY.



				DIMENSIONS, mm [INCHES]		MATL		HT TR		FIN			
				DO NOT SCALE PRINT.									
				TOLERANCES UNLESS OTHERWISE SPECIFIED,		DR 27APR01		APP 27APR01		 AMP Incorporated Harrisburg, PA 17105-3608			
				1 PLC DEC ±0.5 [0.2 IN]		L.L.OFHOUSE		F.BACKHURST					
				2 PLC DEC ±		CHK -		REL 24-05-01					
				3 PLC DEC ±				M.C.LIFFORD					
				ANGLES ±		NAME		SIDE FEED HD-I APPLICATOR				MACHINE REF	
				SURF. TEXTURE. ✓		SCALE		D				DWG NO	
				REMOVE BURRS, BREAK SHARP EDGES R0.38 MAX				1426197				SHEET	
												1 OF 1	
												REV	
												D	
D ECR-06-029509				TM	DEC06								
C 0150-0782-03				RK	JUL03								
B 0150-1444-02				BH	NOV02								
A SEE ECR 015A-0428-01				MC	MAY01								
P	F	L	T	R									
REVISION RECORD				APP	DATE								
3				CAGE CODE						CUSTOMER AND ASSEMBLY DRAWING			
				00779						RESTRICTED TO			
										-			

Mouser Electronics

Authorized Distributor

Click to View Pricing, Inventory, Delivery & Lifecycle Information:

[TE Connectivity:](#)

[1426197-1](#)