

DRAWING MADE IN THIRD ANGLE PROJECTION

PART NUMBER	REV	FIRST USED	TERMINATOR	FEED TYPE	DESCRIPTION
1426132-1	C	-	LEADMAKER	MECH POST FEED	CUTS CARRIER
1426132-2	C	-	BENCH	MECH PRE FEED	CUTS CARRIER
1426132-6	C	-	LEADMAKER	MECH POST FEED	CONTINUOUS CARRIER
7-1426132-1	C	-	LEADMAKER	MECH POST FEED	-1 AND SPARE PARTS
7-1426132-2	C	-	BENCH	MECH PRE FEED	-2 AND SPARE PARTS
7-1426132-6	C	-	LEADMAKER	MECH POST FEED	-6 AND SPARE PARTS
7-1426132-7	B	-	-	-	SPARE PARTS KIT

CRIMP DATA AMP TERMINAL AMP CRIMP SPECS

TERMINAL NAME: CONTACT .070" SER MINI MIC RECEPTACLE

CRIMP	SIZE	TYPE	RANGE
WIRE	1.78 [.070 IN]	F	0.5mm ² - 1.0mm ²
INSUL	3.05 [.120 IN]	0	1.20-2.00 [.047-.079 IN]
WIRE STRIP LENGTH		APPL INSTRUCTION	
3.20-4.20 [.126-.165 IN]		408-8322	

TERMINAL			FEED
APPL SPEC	114-37007		11.89 [.468 IN]

TERMINALS APPLIED

TERMINAL	SEAL	-	-	-
282438	963530	-	-	-
444541	444049	-	-	-
353038	-	-	-	-
-	-	-	-	-
-	-	-	-	-
-	-	-	-	-
-	-	-	-	-
-	-	-	-	-

WIRE SIZE	CRIMP HEIGHT	PIN PN & LENGTH [IN]
mm ² AWG		
1.00mm ²	1.50 ±0.05 [.059 ±.002 IN]	354779-2 [.3000]
0.85mm ²	1.41 ±0.05 [.0560 ±.002 IN]	354779-9 [.3035]
0.75mm ²	1.37 ±0.05 [.054 ±.002 IN]	1-354779-2 [.3050]
0.50mm ²	1.24 ±0.05 [.049 ±.002 IN]	2-354779-3 [.3105]
-	-	-
-	-	-
-	-	-
-	-	-

-
- 1

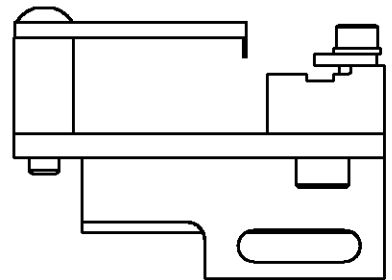
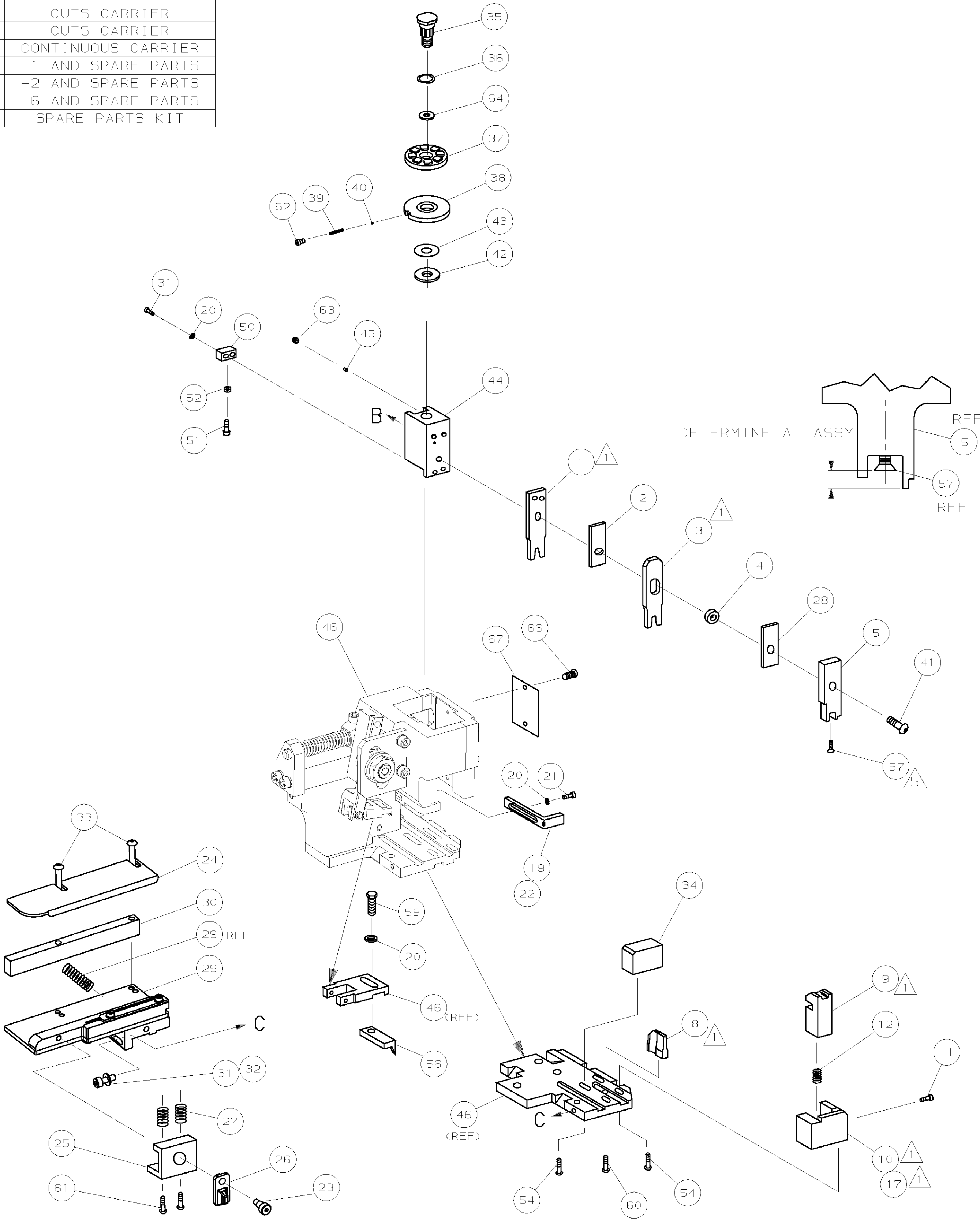
RECOMMENDED SPARE PARTS.
2. GREASE RAM, CAM, CAM FOLLOWER AND FEED ROD LIGHTLY.
3. LUBRICATE DAILY PER THE APPLICATOR INSTRUCTION SHEET SUPPLIED WITH THE APPLICATOR.
- 4

THIS APPLICATOR APPLIES TERMINAL WITH A SEAL.
- 5

APPLY TORQ-SEAL IN ALLEN SOCKET TO FILL HOLE AFTER FLAT HD HAS BEEN ADJUSTED TO CORRECT HEIGHT AT QUALIFICATION. APPLY #1-23419-5 LOC-TITE TO THREADS.

VIEW B ROTATED 180°

POST FEED 40 mm STROKE	POST FEED 30 mm STROKE	PRE FEED 30 mm STROKE	PRE FEED 40 mm STROKE
LOC A			
DIST 66			



C	SEE ECN 0150-0798-03	CMR	JUL03
B	SEE ECN 015A-0426-02	LJL	JUN02
A	SEE ECN 015A-0064-01	LJL	JAN01
P	REVISION RECORD	APP	DATE

-	1	1	1	1	1	1	1426132	PRINT, APPLICATOR LOG SHEET	73
-	1	1	1	1	1	1	1338705-1	DOCUMENTATION PACKAGE	72
									71
									70
									69
									68
-	1	1	1	1	1	1	461264-1	PLATE, IDENTIFICATION	67
-	2	2	2	2	2	2	21017-2	SCR,DRIVE (#2x.19) ID PLATE	66
									65
-	1	1	1	1	1	1	986950-1	WASHER, FLAT PRECISION	64
-	1	1	1	1	1	1	3-18031-0	SCR,SKT SET (M6X6) RAM	63
-	1	1	1	1	1	1	18023-9	SCR,SHC (M4X6) INS DISC	62
-	2	2	2	2	2	2	1-18024-5	SCR,BHC (M5X25) DRAG	61
-	1	1	1	1	1	1	18024-7	SCR,BHC (M4X10) ANVIL	60
-	1	1	1	1	1	1	5-18022-2	SCR,HEX (M4X8) FEED FINGER	59
									58
-	1	1	1	1	1	1	985575-3	SCR,FHC (M3X10) DEP	57
-	1	1	1	1	1	1	1338685-1	PAWL, FEED	56
									55
-	4	4	4	4	4	4	18024-8	SCR,BHC (M4x12) SHEAR HOLDER	54
									53
-	1	1	1	1	1	1	18030-1	NUT,HEX (M3) HOLD DOWN	52
-	1	1	1	1	1	1	811242-5	BUMPER, HOLDDOWN	51
-	1	1	1	1	1	1	690753-2	SPACER, TONKER	50
-	1	1	1	1	1	1	18024-3	SCR,BHC (M3X10) CAM	49
-	-	1	-	-	1	-	1338675-1	CAM, PRE FEED 30 & 40 mm ST	48
-	1	-	1	1	-	1	1338676-1	CAM, POST FEED 30 & 40 mm ST	47
-	1	1	1	1	1	1	1320999-3	APPLICATOR BASIC SUBASSY	46
-	1	1	1	1	1	1	690191-1	PLUG, NYLON	45
-	1	1	1	1	1	1	1338660-1	RAM	44
-	1	1	1	1	1	1	690125-1	WASHER, LAMINATED	43
-	1	1	1	1	1	1	690124-1	WASHER, RAM	42
-	1	1	1	1	1	1	2-18024-6	SCR,BHC (M8X25) RAM	41
-	1	1	1	1	1	1	23241-1	BALL, STEEL	40
-	1	1	1	1	1	1	2-22278-7	SPRING, COMPRESSION	39
-	1	1	1	1	1	1	1-1320922-1	DISC, INSULATION	38
-	1	1	1	1	1	1	354777-1	WIRE DISC, PLASTIC	37
-	1	1	1	1	1	1	22480-5	WASHER, SPRING	36
-	1	1	1	1	1	1	690212-1	POST, RAM	35
-	1	1	1	1	1	1	1320934-1	SUPPORT, TERMINAL	34
-	2	2	2	2	2	2	1-18024-0	SCR,BHC (M4X20) STRIP GUIDE	33
-	1	1	1	1	1	1	18027-2	WASHER, FLAT (M4)	32
-	3	3	3	3	3	3	1-18023-2	SCR,SKT CAP (M4X12) MOUNT BLOCK	31
-	1	1	1	1	1	1	1320908-1	SPACER, STRIP GUIDE	30
-	1	1	1	1	1	1	1633073-1	STRIP GUIDE PLATE ASSY	29
-	1	1	1	1	1	1	1-455888-4	SPACER, FRONT SHEAR DEP	28
-	2	2	2	2	2	2	1-22284-0	SPRING, DRAG	27
-	1	1	1	1	1	1	356835-1	LEVER, DRAG RELEASE	26
-	1	1	1	1	1	1	240792-1	DRAG, TERMINAL	25
-	1	1	1	1	1	1	1320928-1	PLATE, STRIP GUIDE	24
-	1	1	1	1	1	1	980371-4	SCR,SHC SHLD	23
-	1	-	1	1	-	1	690472-2	STRIPPER	22
-	1	1	1	1	1	1	1-18023-1	SCR,SHC (M4X10) STRIPPER	21
-	4	4	4	4	4	4	18025-2	WASHER,LOCK (M4) STRIPPER	20
-	-	1	-	-	1	-	690472-1	STRIPPER	19
									18
-	1	-	-	1	-	-	1338684-2	HOLDER, SHEAR, FRONT (NO-CUT)	17
									16
									15
									14
									13
-	1	1	1	1	1	1	5-22280-0	SPRING, SHEAR	12
-	1	1	1	1	1	1	356885-5	STOP, SHEAR	11
-	-	1	1	-	1	1	1-1320921-0	HOLDER, SHEAR, FRONT (CUT)	10
-	1	1	1	1	1	1	318707-1	SHEAR, FLOAT (FRONT)	9
1	2	2	2	1	1	1	1-1333203-1	ANVIL	8
									7
									6
-	1	1	1	1	1	1	1338680-1	DEPRESSOR, SHEAR (FRONT)	5
-	1	1	1	1	1	1	238011-4	SPACER, BLOCK CRIMPER	4
1	2	2	2	1	1	1	1-456135-7	CRIMPER, INSULATION	3
-	1	1	1	1	1	1	455888-7	SPACER, CRIMPER	2
1	2	2	2	1	1	1	456404-1	CRIMPER, WIRE	1
-77	-76	-72	-71	-6	-2	-1	PART NO	DESCRIPTION	ITEM NO
							REVISION OF EACH ASSY NO (WHEN BLANK, USE DWG REVISION)		
QTY REQD PER ASSY							PARTS LIST		
		DIMENSIONS: mm [INCHES] DO NOT SCALE PRINT. TOLERANCES UNLESS OTHERWISE SPECIFIED: 1 PLC DEC ±0.5 [0.02 IN] 2 PLC DEC ± 3 PLC DEC ±				MATL	HT TR	FIN	
						-	-	-	
						DR 19DEC00 L.L.LOFTHOUSE	APP 19DEC00 F.BACKHURST		
						CHK 23JAN01 M.CLIFFORD	REL 23JAN01 L.LOFTHOUSE		
						AMP Incorporated Harrisburg, PA 17105-3508			
CMR	JUL03	ANGLES ± =				NAME SIDE FEED HD-1 APPLICATOR			MACHINE REF
JUN02		SURF TEXTURE: ✓							HD-1 APPL
JAN01		REMOVE BURRS, BREAK SHARP EDGES RO.38 MAX				SCALE -	DWG NO 1426132	SHEET 1 OF 1	REV C
APP	DATE	CAGE CODE 00779				CUSTOMER AND ASSEMBLY DRAWING			RESTRICTED TO -

Mouser Electronics

Authorized Distributor

Click to View Pricing, Inventory, Delivery & Lifecycle Information:

[TE Connectivity:](#)

[1426132-2](#)