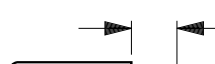




DRAWING MADE IN THIRD ANGLE PROJECTION

PART NUMBER	REV	FIRST USED	TERMINATOR	FEED TYPE	DESCRIPTION
1426028-1	F	-	LEADMAKER	MECH POST FEED	CUTS CARRIER
1426028-2	F	-	BENCH	MECH PRE FEED	CUTS CARRIER
1426028-6	F	-	LEADMAKER	MECH POST FEED	CONTINUOUS CARRIER
7-1426028-1	F	-	LEADMAKER	MECH POST FEED	-1 AND SPARE PARTS
7-1426028-2	F	-	BENCH	MECH PRE FEED	-2 AND SPARE PARTS
7-1426028-6	F	-	LEADMAKER	MECH POST FEED	-6 AND SPARE PARTS
7-1426028-7	D	-	-	-	SPARE PARTS KIT

CONTROLLED DOCUMENT

CRIMP DATA (AMP TERMINAL)				
TERMINAL NAME: PIN & SKT ASSY, .062, TYPE III+				
CRIMP	SIZE	TYPE	RANGE	
WIRE	2.03 [.080 IN]	F	0.50 - 1.50mm <sup>2</sup>	
INSUL	3.05 [.120 IN]	0	2.0-2.5 [.080-.098 IN]	
WIRE STRIP LENGTH			APPL INSTRUCTION	
3.6-4.3 [.141-.171 IN]			408-8322	
TERMINAL	114-19000	-		FEED
APPL SPEC	-	-		12.7 [.5 IN]

TERMINALS APPLIED				
163083	-	-	-	-
163767	-	-	-	-
163081	-	-	-	-
163766	-	-	-	-
164161	-	-	-	-
-	-	-	-	-
-	-	-	-	-
-	-	-	-	-

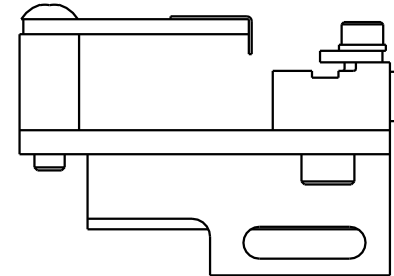
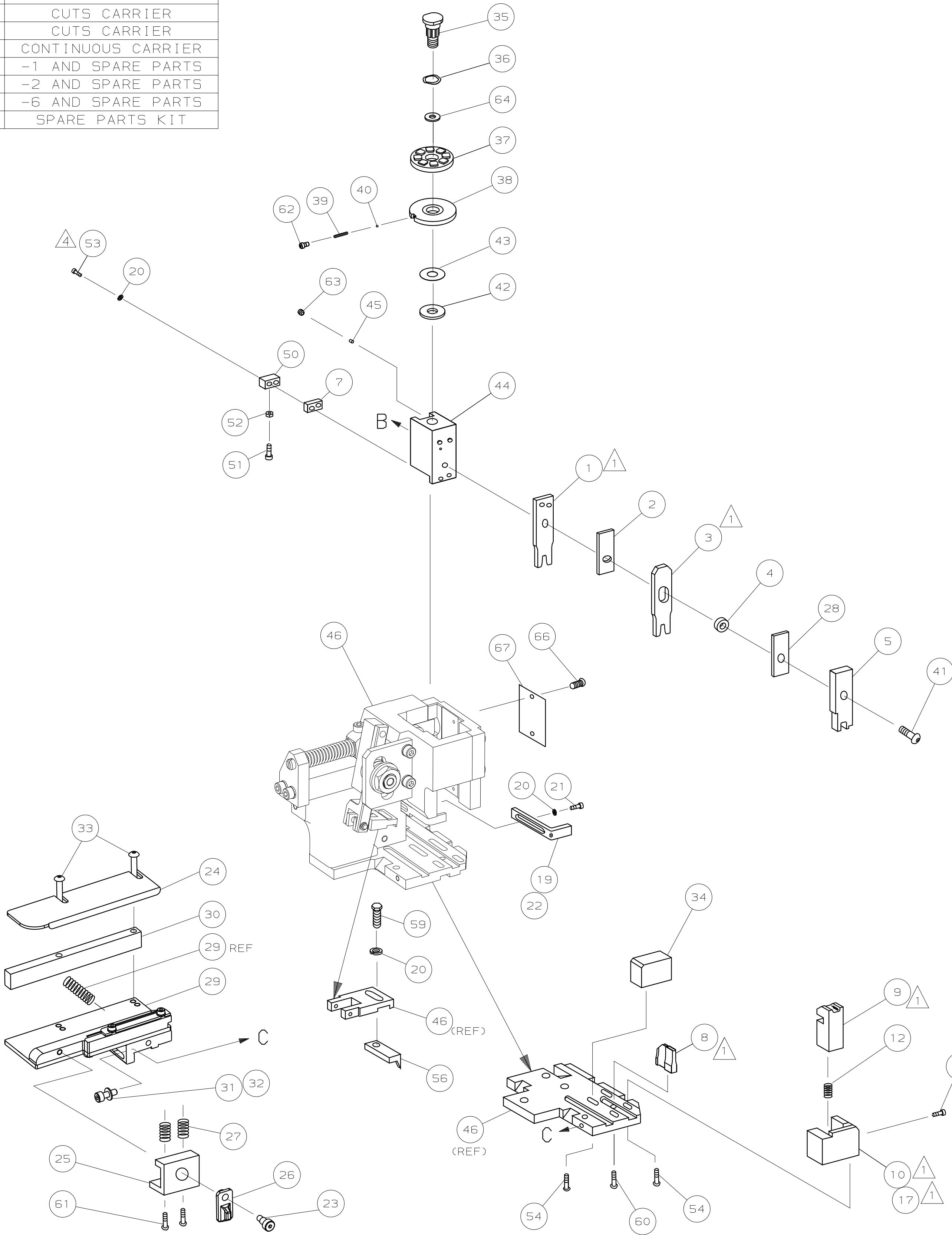
WIRE SIZE	CRIMP HEIGHT	PIN PN & LENGTH [IN]
mm <sup>2</sup> AWG		
16 AWG or 1.50mm <sup>2</sup>	1.40 ±0.05 [.055 ±.002 IN]	1-354779-2 [.3050]
1.00mm <sup>2</sup>	1.32 ±0.05 [.052 ±.002 IN]	1-354779-8 [.3080]
18 AWG or 0.75mm <sup>2</sup>	1.27 ±0.05 [.050 ±.002 IN]	2-354779-2 [.3100]
20 AWG or 0.50mm <sup>2</sup>	1.19 ±0.03 [.047 ±.001 IN]	3-354779-0 [.3140]
-	-	-
-	-	-
-	-	-
-	-	-
-	-	-
-	-	-
-	-	-
-	-	-
-	-	-
-	-	-

- 
- 1

RECOMMENDED SPARE PARTS.
2. GREASE RAM, CAM, CAM FOLLOWER AND FEED ROD LIGHTLY.
3. LUBRICATE DAILY PER THE APPLICATOR INSTRUCTION SHEET SUPPLIED WITH THE APPLICATOR.
- 4

CUT TO LENGTH AT ASSY.

VIEW B ROTATED 180°			
POST FEED 40 mm STROKE	POST FEED 30 mm STROKE	PRE FEED 30 mm STROKE	PRE FEED 40 mm STROKE
LOC A			
DIST 66			



DIMENSIONS: mm [INCHES]				PARTS LIST			
DO NOT SCALE PRINT.				MATERIAL			
TOLERANCES UNLESS OTHERWISE SPECIFIED:				FIN			
2 PLC DEC ±0.5 [0.2 IN]				-			
3 PLC DEC ±				-			
4 PLC DEC ±				-			
ANGLES ±				-			
SURF TEXTURE: ✓				-			
REMOVE BURRS, BREAK SHARP EDGES RO.38 MAX				-			
REVISION RECORD				-			
CAGE CODE				-			
00779				-			

-	1	1	1	1	1	1	1426028	PRINT, APPLICATOR LOG SHEET	73
-	1	1	1	1	1	1	1338705-1	DOCUMENTATION PACKAGE	72
									70
									69
									68
-	1	1	1	1	1	1	461264-1	PLATE, IDENTIFICATION	67
-	2	2	2	2	2	2	21017-2	SCR,DRIVE(#2x.19) ID PLATE	66
									65
-	1	1	1	1	1	1	986950-1	WASHER, FLAT PRECISION	64
-	1	1	1	1	1	1	3-18031-0	SCR,SKT SET (M6X6 LW) RAM	63
-	1	1	1	1	1	1	18023-9	SCR,SHC (M4X6) INS DISC	62
-	2	2	2	2	2	2	2-18032-5	SCR,SOC SET (M5X20) DRAG	61
-	1	1	1	1	1	1	18024-7	SCR,BHC (M4X10) ANVIL	60
-	1	1	1	1	1	1	5-18022-2	SCR,HEX (M4X8) FEED FINGER	59
									58
									57
-	1	1	1	1	1	1	1338685-1	PAWL, FEED	56
									55
-	4	4	4	4	4	4	18024-8	SCR,BHC (M4X12) SHEAR HOLDER	54
-	2	2	2	2	2	2	1-18023-4	SCR,SHC (M4X20) TERM HLD DWN	53
-	1	1	1	1	1	1	18030-1	NUT,HEX (M3) HOLD DOWN	52
-	1	1	1	1	1	1	811242-5	BUMPER, HOLDDOWN	51
-	1	1	1	1	1	1	690753-2	SPACER, TONKER	50
-	1	1	1	1	1	1	18024-3	SCR,BHC (M3X10) CAM	49
-	-	1	-	-	1	-	1338675-1	CAM, PRE FEED 30 & 40 mm ST	48
-	1	-	1	1	-	1	1338676-1	CAM, POST FEED 30 & 40 mm ST	47
-	1	1	1	1	1	1	1320999-3	APPLICATOR BASIC SUBASSY	46
-	1	1	1	1	1	1	690191-1	PLUG, NYLON	45
-	1	1	1	1	1	1	1338660-1	RAM	44
-	1	1	1	1	1	1	690125-1	WASHER, LAMINATED	43
-	1	1	1	1	1	1	690124-1	WASHER, RAM	42
-	1	1	1	1	1	1	2-18024-6	SCR,BHC (M8X25) RAM	41
-	1	1	1	1	1	1	23241-1	BALL, STEEL	40
-	1	1	1	1	1	1	2-22278-7	SPRING, COMPRESSION	39
-	1	1	1	1	1	1	1320922-1	DISC, INSULATION	38
-	1	1	1	1	1	1	354777-1	WIRE DISC, PLASTIC	37
-	1	1	1	1	1	1	22480-5	WASHER, SPRING	36
-	1	1	1	1	1	1	690212-1	POST, RAM	35
-	1	1	1	1	1	1	1320934-1	SUPPORT, TERMINAL	34
-	2	2	2	2	2	2	1-18024-0	SCR,BHC (M4X20) STRIP GUIDE	33
-	1	1	1	1	1	1	18027-2	WASHER, FLAT (M4)	32
-	1	1	1	1	1	1	1-18023-2	SCR,SKT CAP (M4X12) MOUNT BLOCK	31
-	1	1	1	1	1	1	1320908-1	SPACER, STRIP GUIDE	30
-	1	1	1	1	1	1	1633073-1	STRIP GUIDE PLATE ASSY	29
-	1	1	1	1	1	1	1-455888-4	SPACER, FRONT SHEAR DEP	28
-	2	2	2	2	2	2	1-22284-0	SPRING, DRAG	27
-	1	1	1	1	1	1	356835-1	LEVER, DRAG RELEASE	26
-	1	1	1	1	1	1	240792-1	DRAG, TERMINAL	25
-	1	1	1	1	1	1	1320928-1	PLATE, STRIP GUIDE	24
-	1	1	1	1	1	1	980371-4	SCR,SHC SHLD	23
-	1	-	1	1	-	1	690472-2	STRIPPER	22
-	1	1	1	1	1	1	1-18023-1	SCR,SHC (M4X10) STRIPPER	21
-	4	4	4	4	4	4	18025-2	WASHER, LOCK (M4) STRIPPER	20
-	-	1	-	-	1	-	690472-1	STRIPPER	19
									18
-	1	-	-	1	-	-	1338684-1	HOLDER, SHEAR, FRONT (NO-CUT)	17
									16
									15
									14
									13
-	1	1	1	1	1	1	3-22280-3	SPRING, SHEAR	12
-	1	1	1	1	1	1	356885-4	STOP, SHEAR	11
-	-	1	1	-	1	1	1320921-1	HOLDER, SHEAR, FRONT (CUT)	10
-	1	1	1	1	1	1	454276-1	SHEAR, FLOAT (FRONT)	9
1	2	2	2	1	1	1	1333228-1	ANVIL	8
-	1	1	1	1	1	1	240641-3	SPACER, DEPRESSOR (REAR)	7
									6
-	1	1	1	1	1	1	1-455889-4	DEPRESSOR, SHEAR (FRONT)	5
-	1	1	1	1	1	1	238011-6	SPACER, BLOCK CRIMPER	4
1	2	2	2	1	1	1	9-456135-2	CRIMPER, INSULATION	3
-	1	1	1	1	1	1	455888-4	SPACER, CRIMPER	2
1	2	2	2	1	1	1	1-456405-5	CRIMPER, WIRE	1

THIS DRAWING IS A CONTROLLED DOCUMENT.

LAYOUT  
L1426028

SET UP GAGE  
458637-3

2000

RELEASED FOR PUBLICATION  
BY AMP INCORPORATED. ALL RIGHTS RESERVED.

THIS DRAWING IS UNCLASSIFIED.  
© COPYRIGHT 2000

AMP 1756 REV 3-92

25-AUG-06

09:10:35

b8420

7

6

5

4

3

2

1

0

-1

-2

-3

-4

-5

-6

-7

-8

-9

-10

-11

-12

-13

-14

-15

-16

-17

-18

-19

-20

-21

-22

-23

-24

-25

-26

-27

-28

-29

-30

-31

-32

-33

-34

-35

-36

-37

-38

-39

-40

-41

-42

-43

-44

-45

-46

-47

-48

-49

-50

-51

-52

-53

-54

-55

-56

-57

-58

-59

-60

-61

-62

-63

-64

-65

-66

-67

-68

-69

-70

-71

-72

-73

-74

-75

-76

-77

-78

-79

-80

# Mouser Electronics

Authorized Distributor

Click to View Pricing, Inventory, Delivery & Lifecycle Information:

[TE Connectivity:](#)

[1426028-2](#)