

DRAWING MADE IN THIRD ANGLE PROJECTION

PART NUMBER	REV	FIRST USED	TERMINATOR	FEED TYPE	DESCRIPTION
1426006-1	E	-	LEADMAKER	MECH POST FEED	CUTS CARRIER
1426006-2	E	-	BENCH	MECH PRE FEED	CUTS CARRIER
1426006-6	E	-	LEADMAKER	MECH POST FEED	CONTINUOUS CARRIER
7-1426006-1	E	-	LEADMAKER	MECH POST FEED	-1 AND SPARE PARTS
7-1426006-2	E	-	BENCH	MECH PRE FEED	-2 AND SPARE PARTS
7-1426006-6	E	-	LEADMAKER	MECH POST FEED	-6 AND SPARE PARTS
7-1426006-7	D	-	-	-	SPARE PARTS KIT

CRIMP DATA (AMP TERMINAL)

TERMINAL NAME: TAB 5.8 X 0.8 - ASSY

CRIMP	SIZE	TYPE	RANGE
WIRE	3.30 [1.130 IN]	F	3.00-4.00mm ²
INSUL	4.57 [1.180 IN]	OV	3.30-4.50 [1.130-.177 IN]

WIRE STRIP LENGTH4.70 [1.185 IN]

APPL INSTRUCTION408-8322

TERMINAL-
APPL SPEC114-18052

FEED19.50 [1.768 IN]

TERMINALS APPLIED


954308	-	-	-	-
-	-	-	-	-
-	-	-	-	-
-	-	-	-	-
-	-	-	-	-
-	-	-	-	-
-	-	-	-	-
-	-	-	-	-
-	-	-	-	-
-	-	-	-	-

WIRE SIZEmm² AWG

CRIMP HEIGHT

PIN PN & LENGTH [IN]

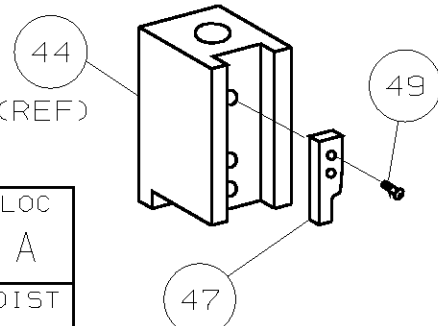
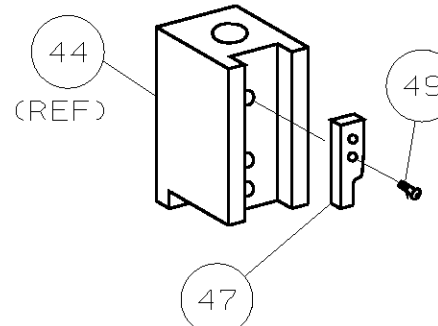
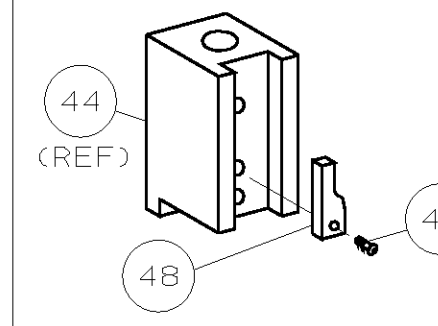
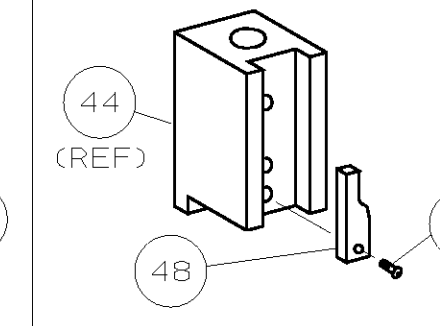
4.00mm ²	2.33 ±0.05 [1.092 ±.002 IN]	4-354778-0 [1.2695]
3.50mm ²	2.23 ±0.05 [1.088 ±.002 IN]	4-354778-9 [1.2740]
3.00mm ²	2.11 ±0.05 [1.083 ±.002 IN]	5-354778-7 [1.2780]
-	-	-
-	-	-
-	-	-
-	-	-
-	-	-
-	-	-
-	-	-
-	-	-
-	-	-

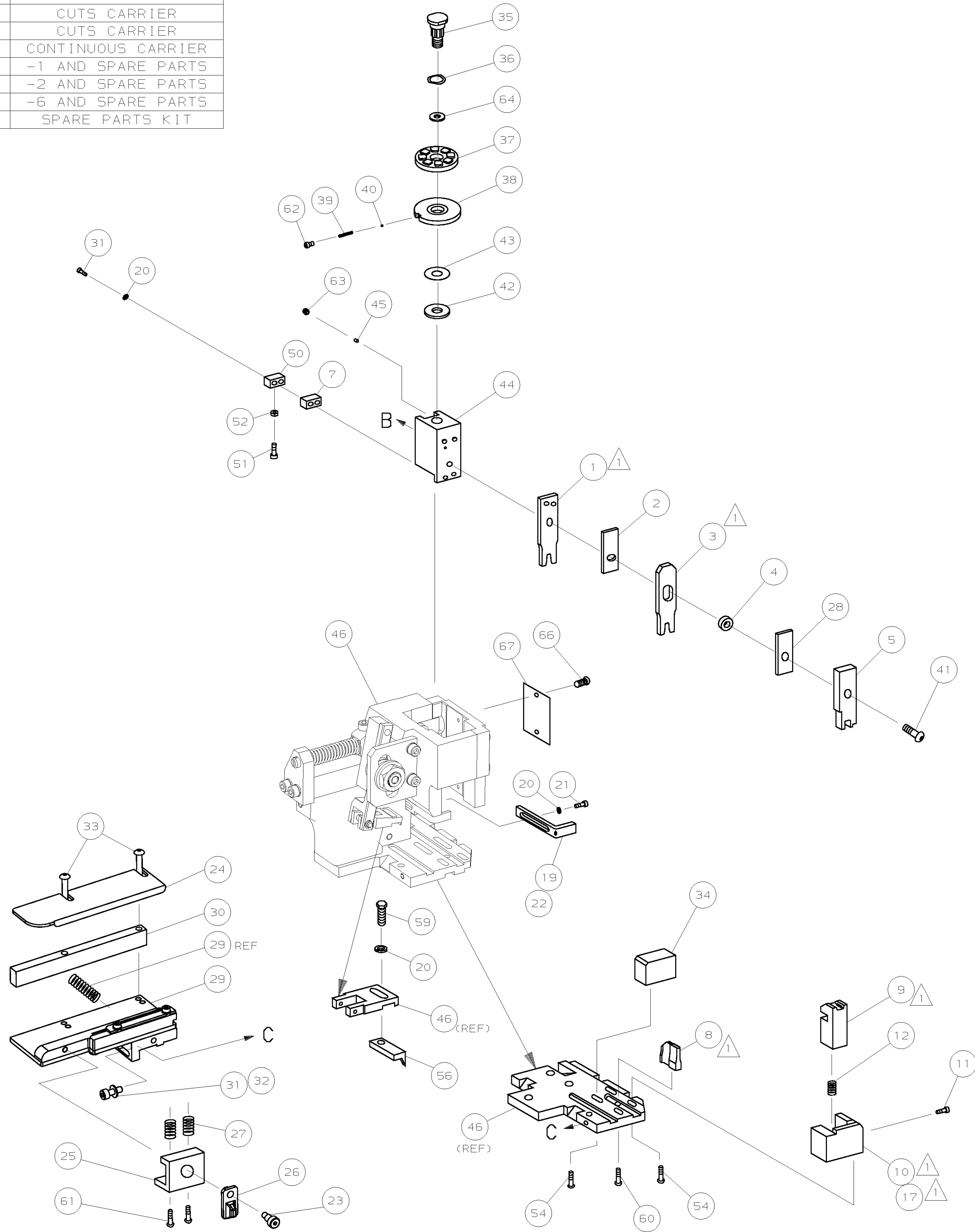
-  RECOMMENDED SPARE PARTS.
2.

GREASE RAM, CAM, CAM FOLLOWER AND FEED ROD LIGHTLY.
3.

LUBRICATE DAILY PER THE APPLICATOR INSTRUCTION SHEET SUPPLIED WITH THE APPLICATOR.

VIEW B ROTATED 180°

POST FEED 40 mm STROKE	POST FEED 30 mm STROKE	PRE FEED 30 mm STROKE	PRE FEED 40 mm STROKE
			
LOC A	LOC A	LOC A	LOC A
DIST 66	DIST 66	DIST 66	DIST 66



Mouser Electronics

Authorized Distributor

Click to View Pricing, Inventory, Delivery & Lifecycle Information:

[TE Connectivity:](#)

[1426006-1](#)