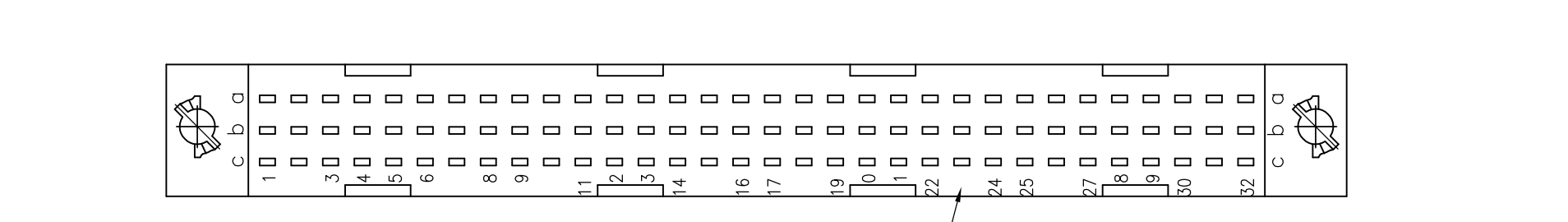
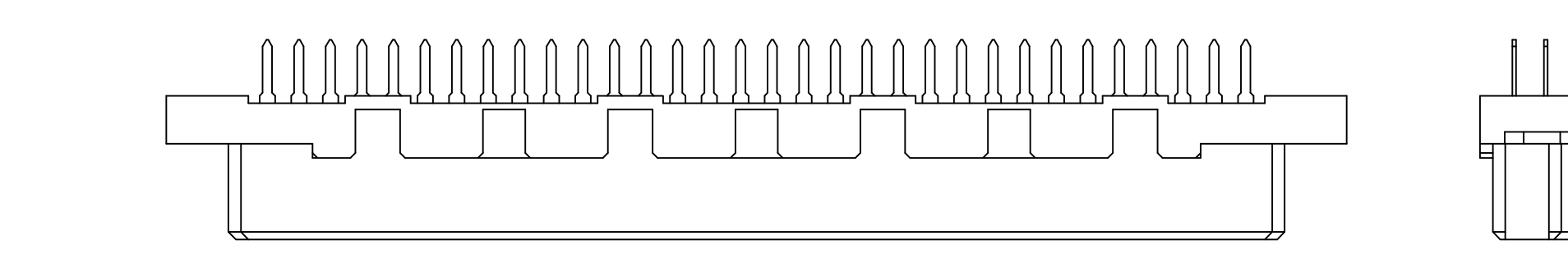
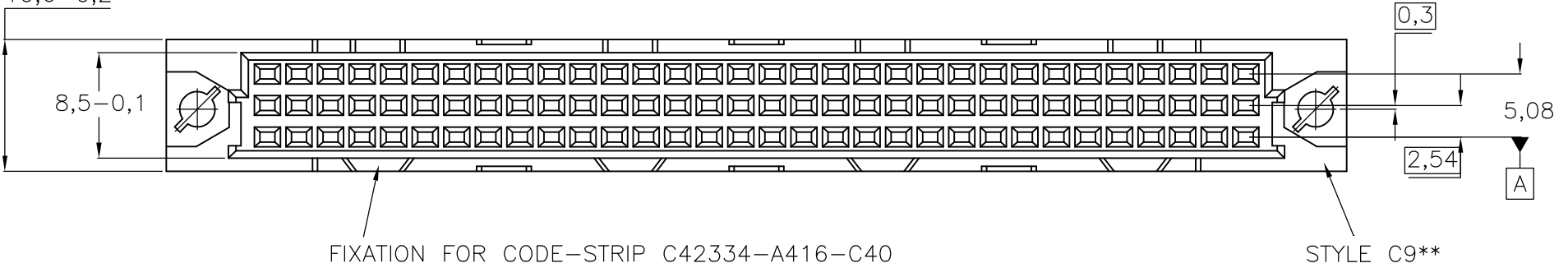
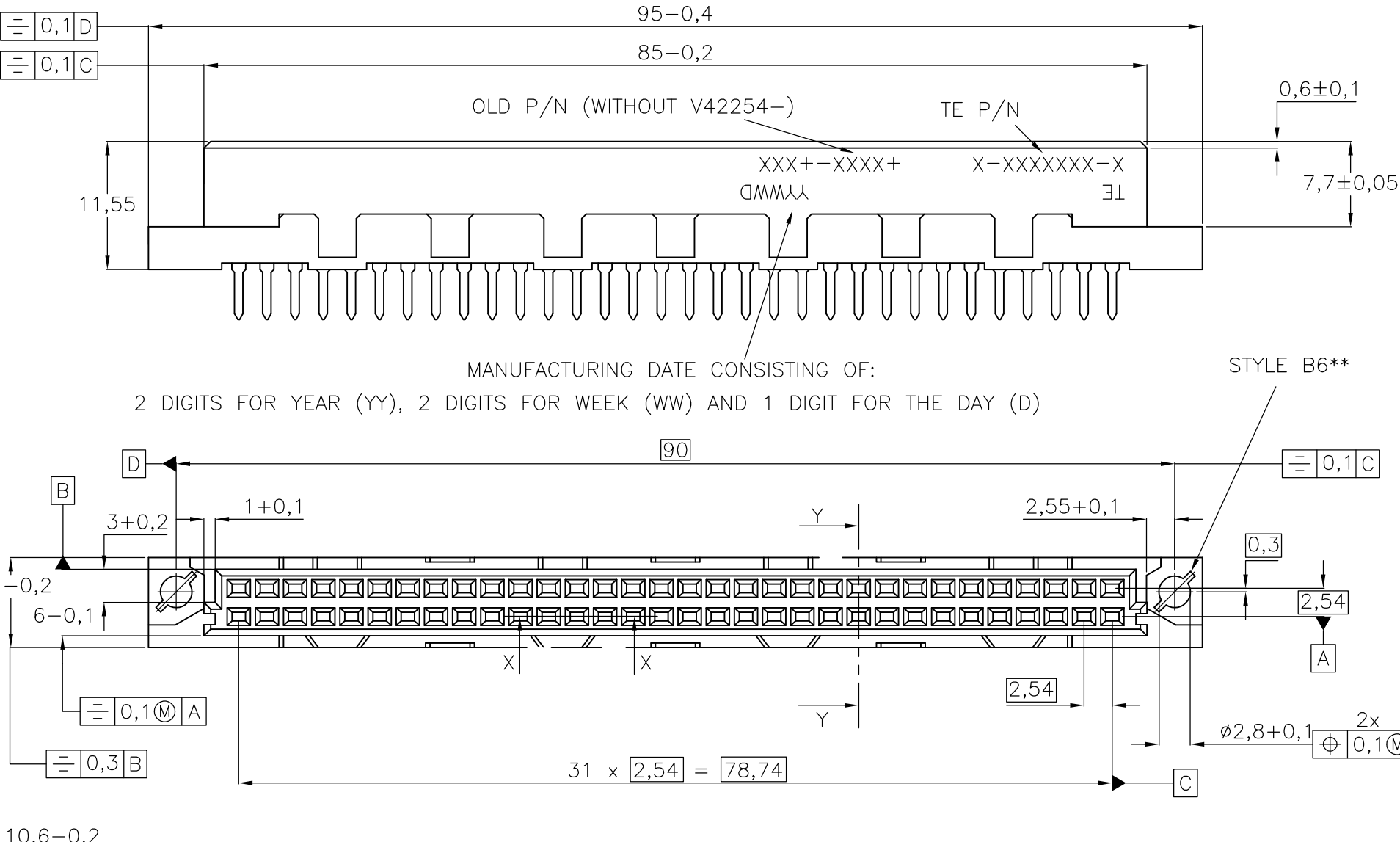
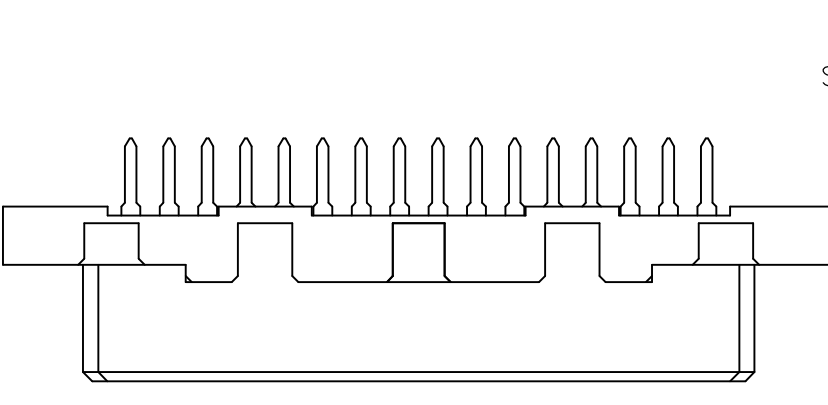
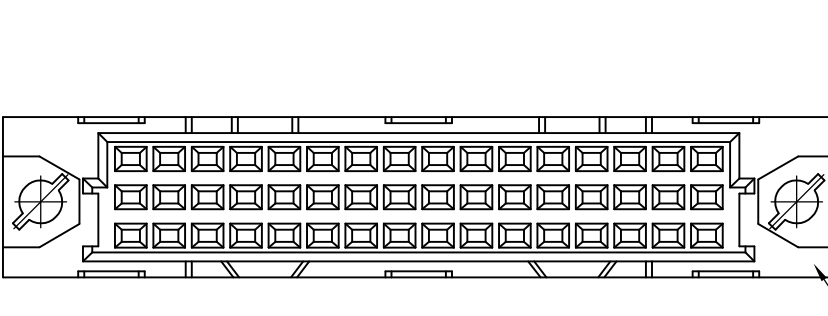
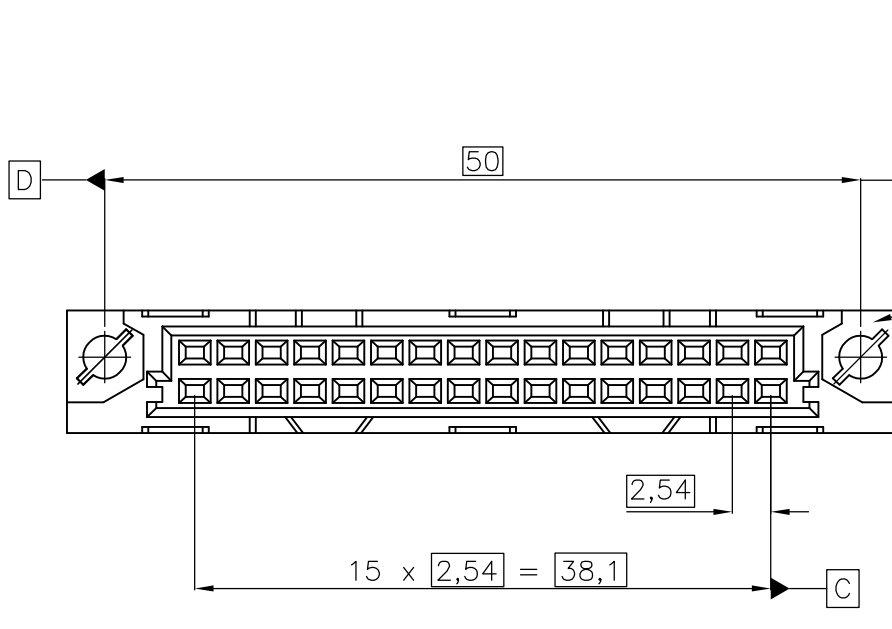
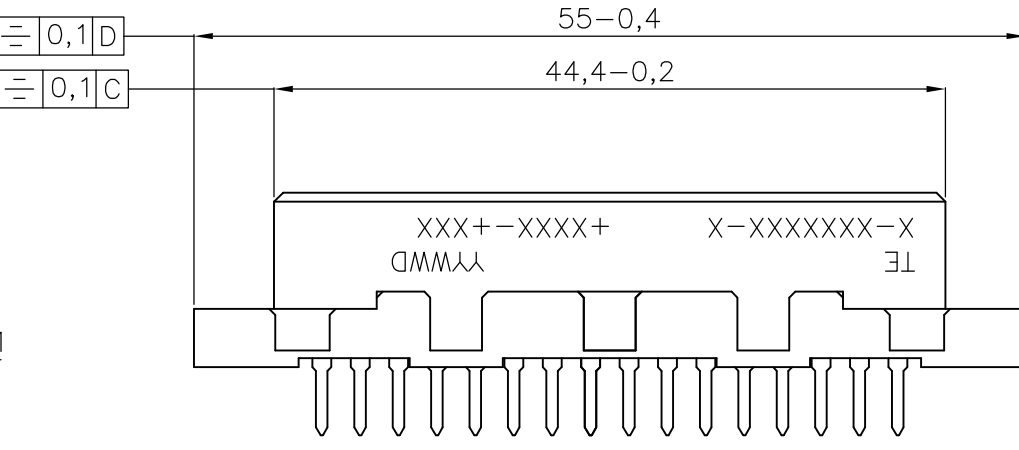


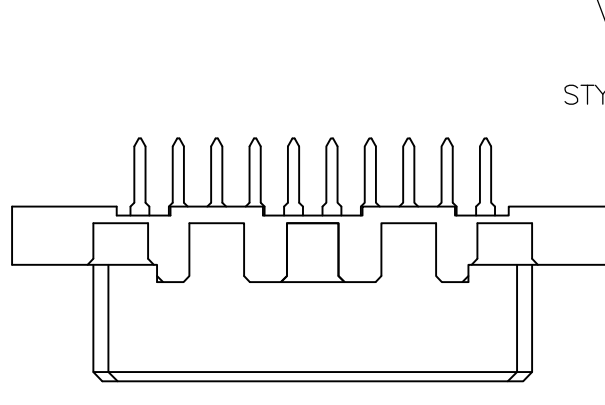
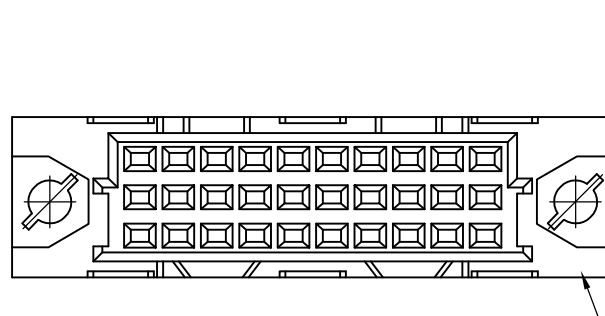
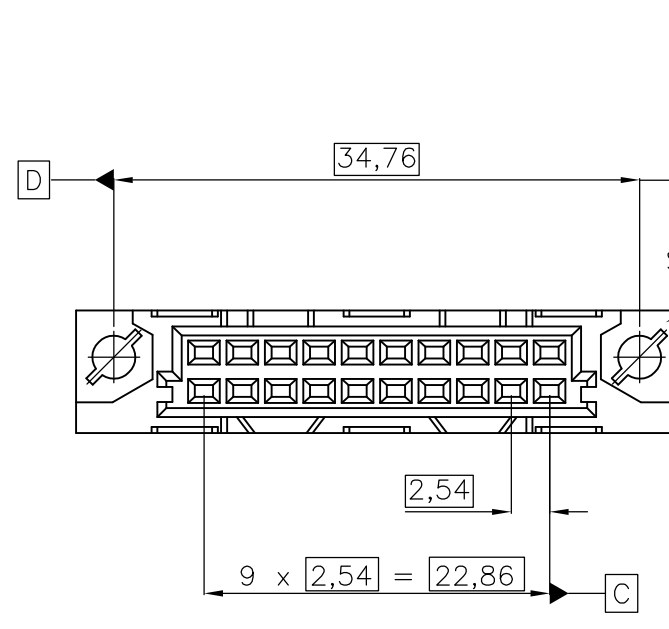
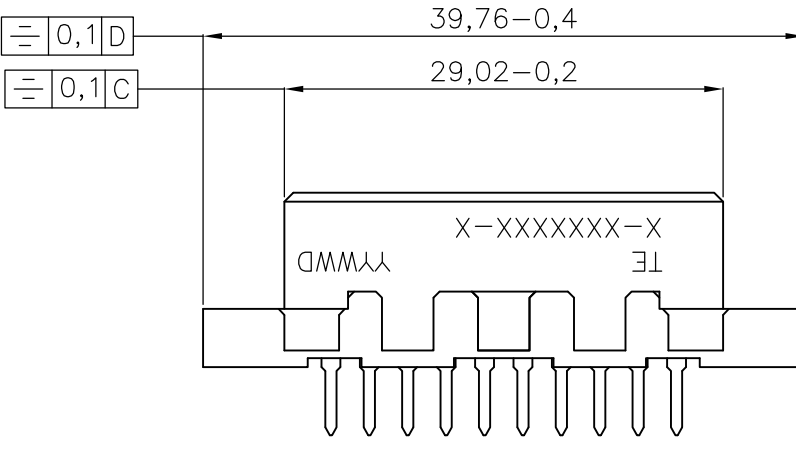
D



HOUSING MATERIAL: PBTP 30% GLASSFILLED (UL94V-0)  
PEBBLE GREY (SIMILAR RAL 7032)



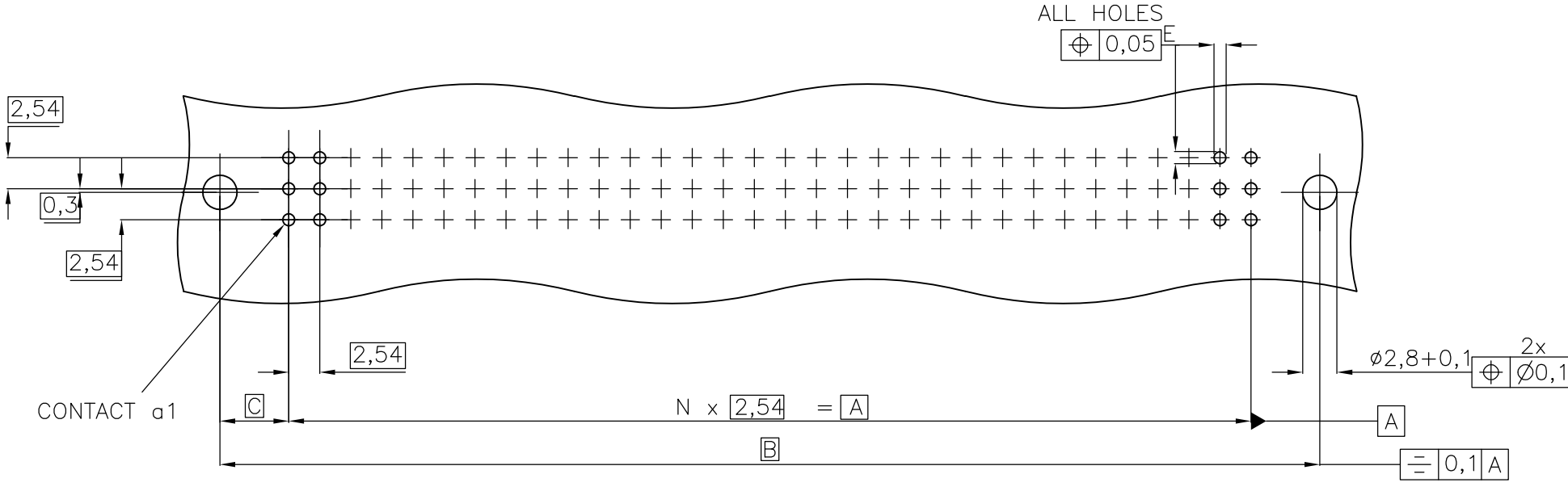
HOUSING MATERIAL: PBTP 30% GLASSFILLED (UL94V-0)  
PEBBLE GREY (SIMILAR RAL 7032)



HOUSING MATERIAL: PBTP 30% GLASSFILLED (UL94V-0)  
PEBBLE GREY (SIMILAR RAL 7032)

B

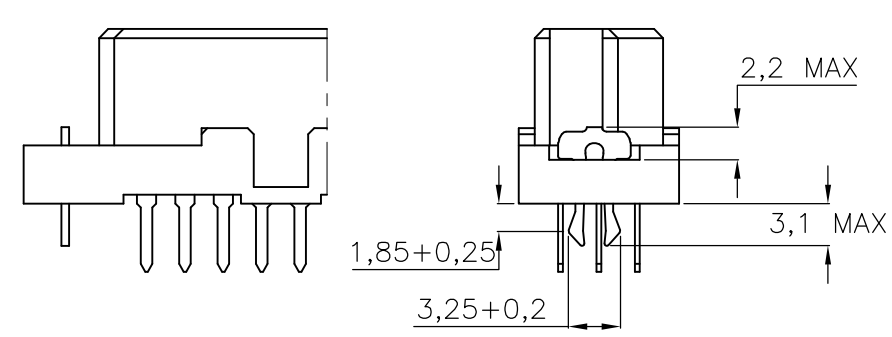
MOUNTING HOLES IN PCB:



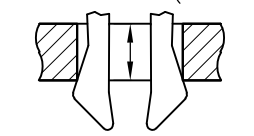
TYPE	N	A	B	C
B C	31	78,74	90	5,63
B/2 C/2	15	38,16	50	5,95
B/3 B/3	9	22,86	34,76	5,95

E	TERMINATION
1,0±0,1	SOLDER
1,0+0,1	WIRE WRAP

Female connector with board locks

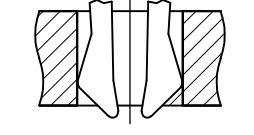


MOUNTED IN PC-BOARDS  
OF 1,5 TO 1,8 mm  
Fm <= 60 N  
Fr >= 20 N  
Fr >= 200 N, wenn  
SOLDERED-IN

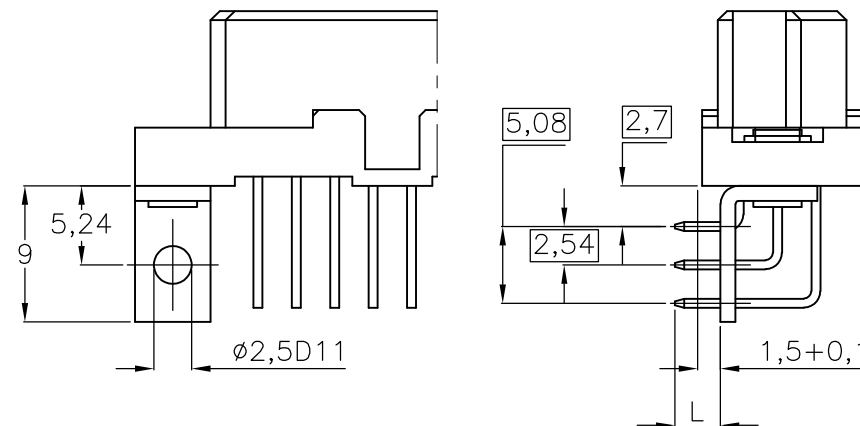


Fr = RETENTION FORCE  
(FOR 1 CONNECTOR = 2 CLIPS)

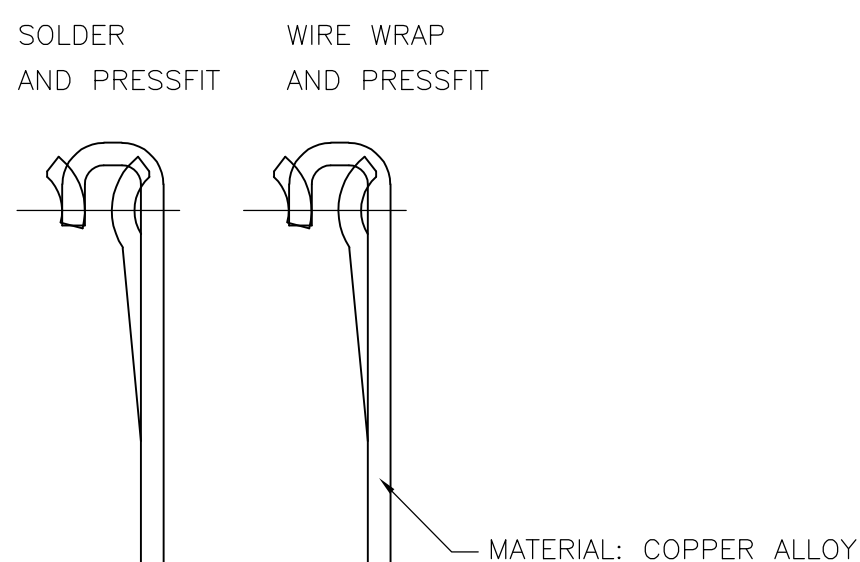
MOUNTED IN PC-BOARDS  
OVER 1,8 mm  
Fm <= 60 N  
Fr >= 16 N



FEMALE CONNECTOR WITH RIGHT ANGLE SOLDER LEADS  
WITH MOUNTING BRACKET



CONTACT : DIMENSIONS, PLATING AND MATERIAL

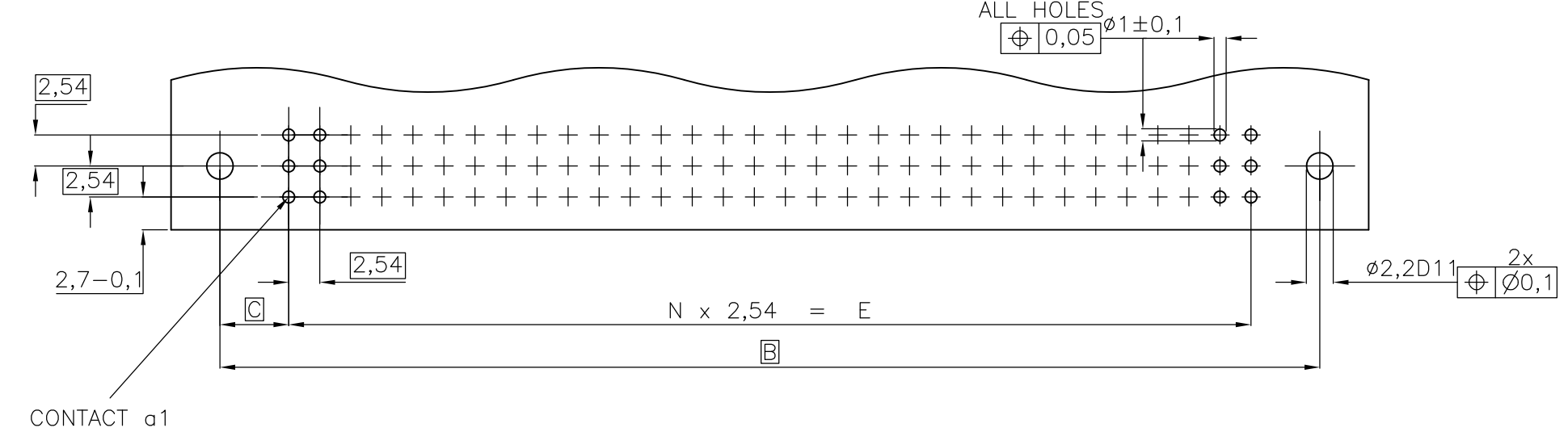


PERFORMANCE LEVEL	NOBLE METALS	CODE
CLASS I	PdNi + Au or Au Au	1 4
CLASS II	PdNi + Au or Au Au	2 5
CLASS III	PdNi + Au or Au	3

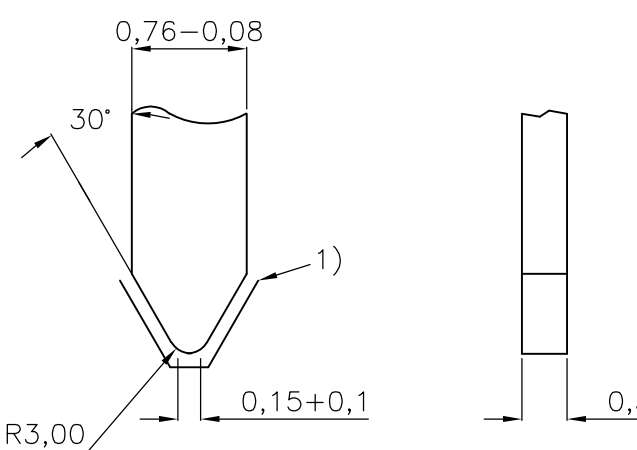
NICKEL UNDERLAYER  
PROTECTION FILM : HF-GREASE

A

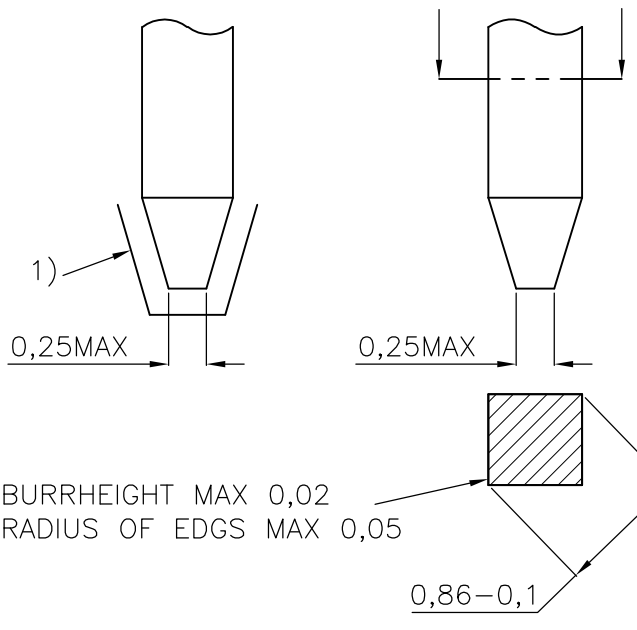
MOUNTING HOLES IN PCB FOR RIGHT ANGLE SOLDER TERMINATIONS



SOLDER TERMINATIONS



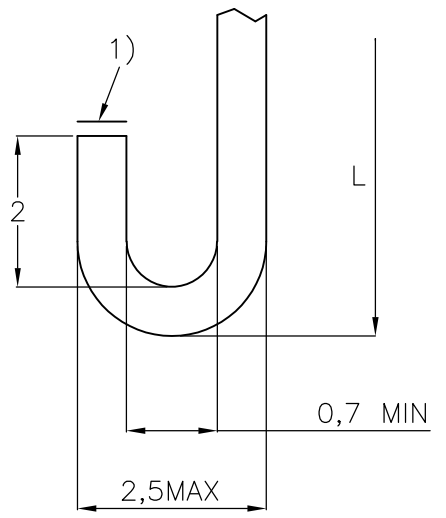
WIRE WRAP TERMINATIONS AND  
SOLDER TERMINATION



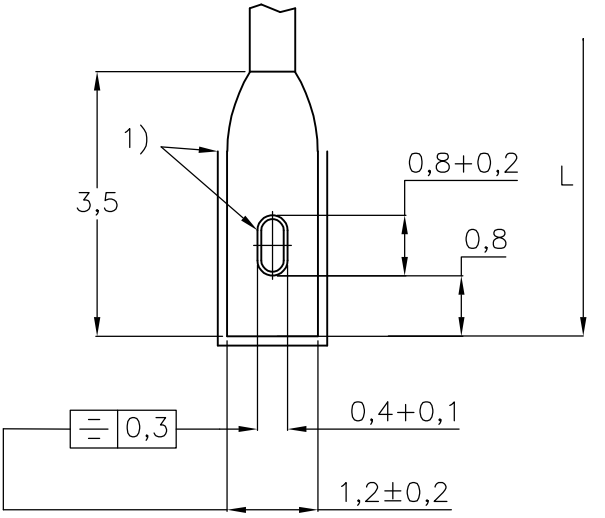
TERMINATION STYLES

		L	CODE
	SOLDER	2,9±0,3	01
		3,7±0,3	05
		4,5±0,3	02
	SOLDER	6±0,3	03
		7,3±0,3	04
		13±0,5	40
	SOLDER	5,5±0,3	30
		10±0,5	
	SOLDER	5,5 ±0,3	35
		10 -0,5	
	SOLDER	1,55 -0,4	00
		3 -0,4	10
	SOLDER	13+0,5	60
		17+0,5	61
		4+0,5	63
		13+0,5	66
		17+0,5	67
		6+0,5	69
		6+0,5	70

SOLDER HOOKS



SOLDER LUGS



V 4 2 2 5 4 - \* 2 \* \* \* - + \* \* \*

B : STANDARD VERSION  
F : VERSION WITH FLUX-TIGHT COATING

CODE FOR PERFORMANCE LEVEL

CODE FOR TERMINATION STYLE

STYLE, NO OF CONTACTS  
AND CONTACT ASSIGNMENT  
SEE PAGE 2

THIS DRAWING IS A CONTROLLED DOCUMENT.

DWN  
CUVELIER

CHK  
-

14FEB89

NAME

RECEPTACLE ASSEMBLY EUROCARD  
TYPES B,C AND SHORT VERSIONS  
(PN:V42254-B2\*\*\*-C\*\*\*-\*-7626)

SIZE  
A1

CAGE CODE  
00779

DRAWING NO  
1393640-1

RESTRICTED TO

CUSTOMER DRAWING

SCALE  
NTS

SHEET  
1

OF  
2

REV  
B11



# Mouser Electronics

Authorized Distributor

Click to View Pricing, Inventory, Delivery & Lifecycle Information:

[TE Connectivity:](#)

[V42254B2102C963](#)