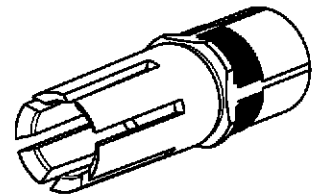
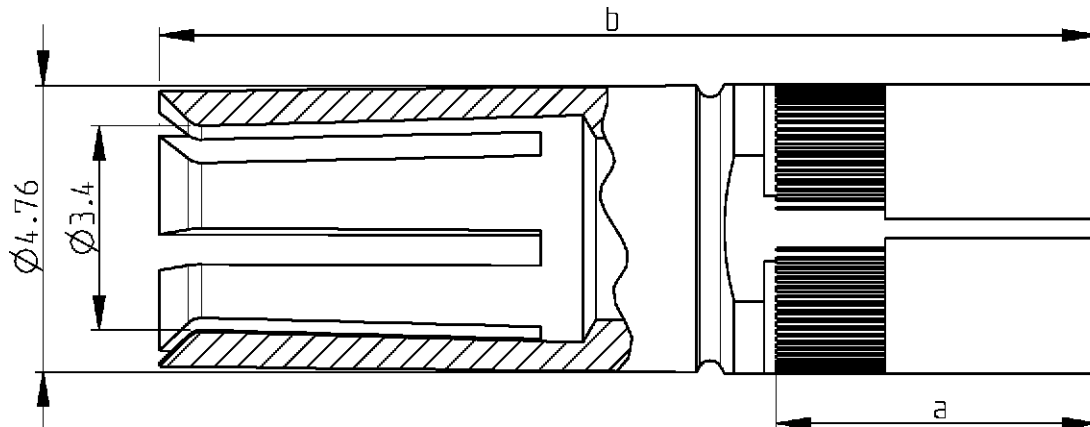


LOC	DIST	REVISIONS					
GW	—	P	LTR	DESCRIPTION	DATE	DWN	APVD
			A1	SR10-0170-01	26APR2001	BL	KM
			A2	SR10-0445-02	17OCT2002	KM	RL



3:1



1:1

2) Application : DIN 41612 type M

1) All dimensions are maximum unless otherwise specified.

Cross reference table

Old part number	Tyco part number	Current	Material	Plating	dim a	dim b
C42334-A347-A180	1393590-1	40 A	CuBe	1 µm Au or Pd in contact area	5.5	15.6
V23648-A62-B4	1393590-5	25 A	CuBe	1 µm Au or Pd in contact area	6.5	16.1

DIMENSIONS: mm		DWN B. Lenvain 19APR2001	MATERIAL -		FINISH -	
TOLERANCES UNLESS OTHERWISE SPECIFIED: 0 PLC ± 1 PLC ± 2 PLC ± 3 PLC ± 4 PLC ± ANGLES ±		CHK K. Mattheeuws 19APR2001	tyco Electronics Tyco Electronics Dostkamp - Belgium			
		APVD R. Leeman 19APR2001	NAME High current socket with PCB connection			
		PRODUCT SPEC -	SIZE A4		CAGE CODE 00779	DRAWING NO C-1393590-1
		APPLICATION SPEC -	RESTRICTED TO -			
		WEIGHT -				
CUSTOMER DRAWING			SCALE 8/1		SHEET 1	OF 1 REV A2

Mouser Electronics

Authorized Distributor

Click to View Pricing, Inventory, Delivery & Lifecycle Information:

[TE Connectivity:](#)

[C42334A 347A180](#)