

4

3

2

1

THIS DRAWING IS UNPUBLISHED.

RELEASED FOR PUBLICATION

© COPYRIGHT

ALL RIGHTS RESERVED.

LOC

DIST


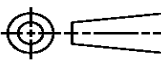
REVISIONS

P	LTR	DESCRIPTION	DATE	DWN	APVD
	E2	ECR-14-003312	05MAR2014	GK	HMR

REPLACED BY OCEAN STYLE APPLICATOR PART
NUMBER 2151245-1

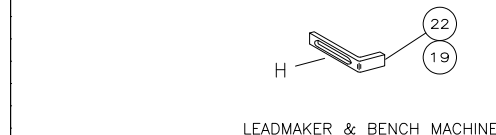
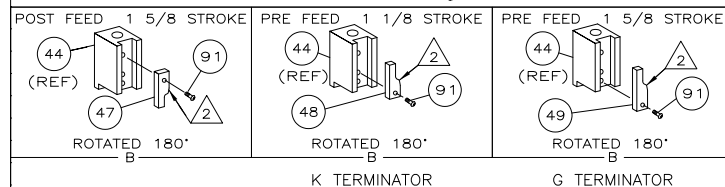
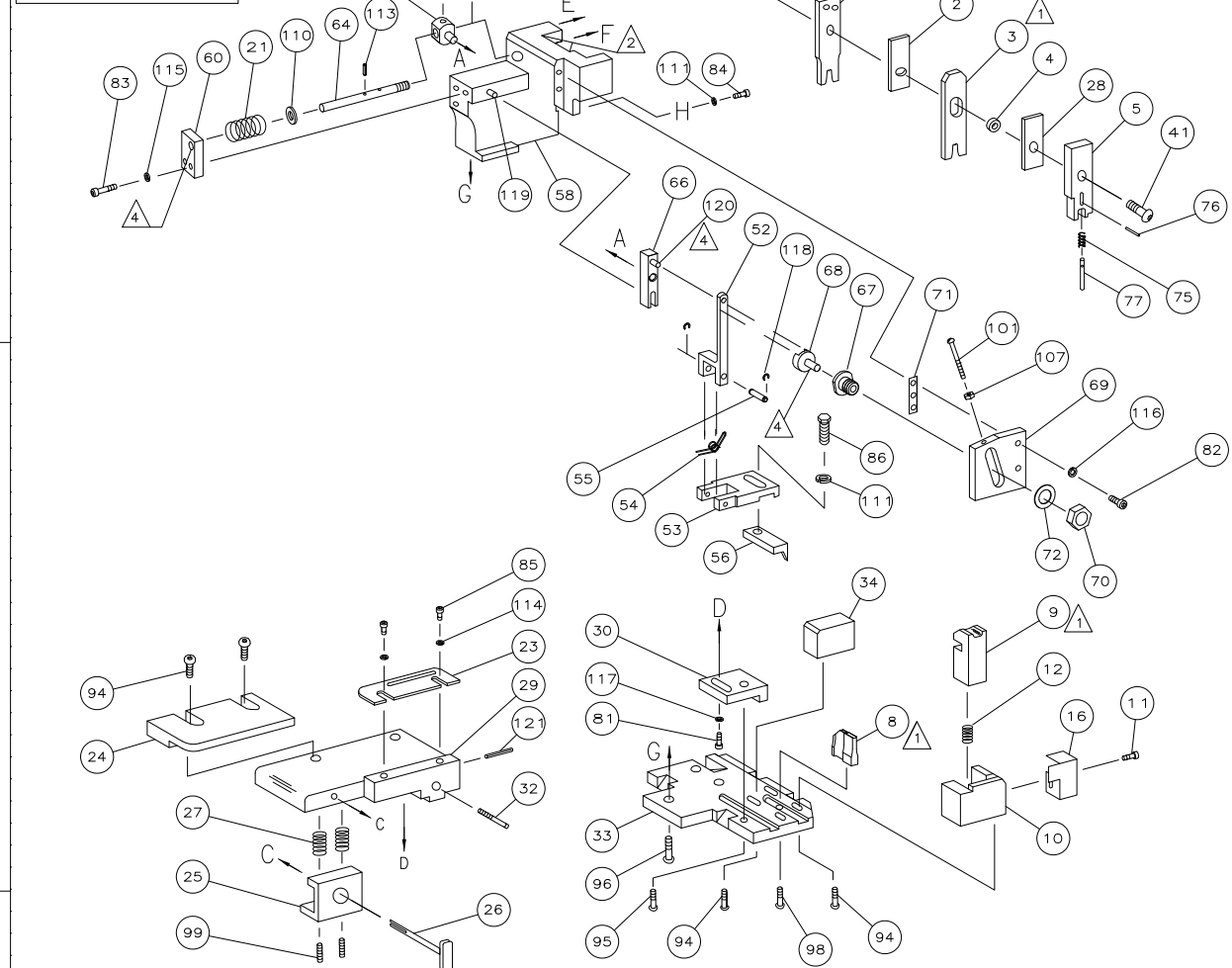
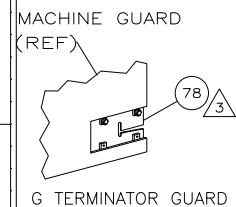
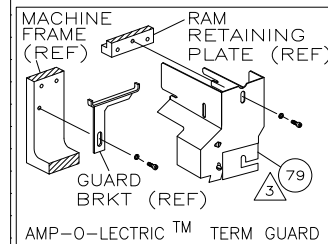
FOR REPLACEMENT PARTS FOR APPLICATOR 1385559
REFER TO ADDITIONAL PAGE(S). SPARE PARTS KIT (IF LISTED)
WILL REMAIN AVAILABLE.

THE REPLACEMENT OCEAN STYLE APPLICATOR HAS THE
SAME TERMINATOR/PRESS INTERFACE AS APPLICATOR
1385559

THIS DRAWING IS A CONTROLLED DOCUMENT.		DWN GOPALAKRISHNA HV		 TE Connectivity			
DIMENSIONS:		CHK RAGHAVENDRA					
		APVD RAGHAVENDRA		NAME SIDE FEED HDM APPLICATOR			
		PRODUCT SPEC					
		APPLICATION SPEC					
MATERIAL		WEIGHT		SIZE A3	CAGE CODE	DRAWING NO C- 1385559	RESTRICTED TO
FINISH		CUSTOMER DRAWING		SCALE		SHEET 1 OF 2	REV E2

THIS DRAWING IS UNPUBLISHED.
RELEASED FOR PUBLICATION
BY TYCO ELECTRONICS CORPORATION. ALL RIGHTS RESERVED.

PART NUMBER	REV	FIRST USED
1385559-1	E	122500-1
1385559-2	E	565435-5
1385559-3	E	354500-1



TERMINAL NAME: DOUBLE FLAT-LEAF CONTACT		CRIMPING DATA			
500 FEED GROUP 1	.800 FEED GROUP 2	REF SETTING	CRIMP HEIGHT	WIRE SIZE	
925595	925612	B2	.067 ±.002 [1.70 ±.05mm]	2.5mm ²	
925621	826042	B9	.063 ±.002 [1.59 ±.05mm]	14	
	926006	C2	.062 ±.002 [1.58 ±.05mm]	2.00mm ²	
	926923	C3	.060 ±.002 [1.52 ±.05mm]	1.75mm ²	
	964202	C9	.057 ±.002 [1.45 ±.05mm]	1.50mm ² or (2) 18	
	928805	D2	.055 ±.002 [1.40 ±.05mm]	1.25mm ² or 16	
	926973	D6	.052 ±.002 [1.32 ±.05mm]	1.0mm ²	
		D9	.050 ±.002 [1.27 ±.05mm]	0.8mm ² OR 18	
		CRIMP	SIZE	TYPE	
		WIRE	.110 [2.79mm]	F	
		INSUL	.155 [3.94mm]	F	
WIRE STRIP LENGTH		TERM APPL SPEC	FEED	APPL INSTRUCTION	SET UP GAGE LAYOUT
.156-.188		114-18079-0	.500/.800	408-8040	458637-1 1245

1	1	1	-	217238-1	GENERAL INSTRUCTION PACKAGE	125
1	1	1	-	4088040	SF APPL INST 408-8040	123
1	1	1	-	4-21028-0	PIN,SLT SPR(Ø.093x.75)ST GDE PL	122
REF	REF	REF	-	1-21030-1	PIN,DOWEL(Ø.187x.50)LEVER	121
REF	REF	REF	-	1-21030-6	PIN,DOWEL(Ø.187x1.25)HOUSING	120
REF	REF	REF	-	21045-3	RING,RET "C"(Ø.187)FD FING PIN	119
1	1	1	-	21024-5	WASHER,LOCK(#10)ADJ BLOCK	118
REF	REF	REF	-	21024-5	WASHER,LOCK(#10)ADJ PLATE	117
REF	REF	REF	-	21024-5	WASHER,LOCK(#10)FEED GDE ROD	116
2	2	2	-	21024-2	WASHER,LOCK(#4)FRONT STP GUIDE	115
REF	REF	REF	-	5-21028-1	PIN,SLT SPR(Ø.125x.50)ADJ ROD	114
4	4	4	-	21024-4	WASHER,LOCK(#8)STRIPPER	113
REF	REF	REF	-	21899-4	WASHER,FLAT(Ø5/16)SCREW ADJ	112
1	1	1	-	21018-5	NUT,HEX(NO.6)HOLDDOWN	111
REF	REF	REF	-	21018-5	NUT,HEX(6-32)FEED ADJ	110
1	1	1	-	21009-2	SCR,SKT SET(1/4-20x.25 LW)RAM	109
2	2	2	-	21017-2	SCR,DRIVE(#2x.19)ID PLATE	108
REF	REF	REF	-	6-23715-5	SCR,PAN HD(6-32x1.50)FEED ADJ	107
1	1	1	-	461264-5	PLATE, IDENTIFICATION	106
2	2	2	-	5-21006-6	SCR,SET(10-32x.75)DRAG	105
1	1	1	-	22733-8	SCR,BHC(8-32x.38 LW)ANVIL	104
REF	REF	REF	-	2-21002-9	SCR,BHC(10-32x.75)CAP	103
REF	REF	REF	-	2-22733-8	SCR,BHC(1/4-20x.62)HOUSING	102
REF	REF	REF	-	2-21002-7	SCR,BHC(10-32x.50)SG ADJ BLOCK	101
4	4	4	-	2-21002-2	SCR,BHC(8-32x.50)TERM H DWN	100
1	1	1	-	1-21002-7	SCR,BHC(6-32x.38)CAM	99
2	2	2	-	2-21000-8	SCR,SHC(8-32x.62)DEP-HOLD	98
1	1	1	-	2-22603-0	SCR,HEX HD(8-32x.31)FEED FINGER	97
2	2	2	-	1-21000-3	SCR,SHC(4-40x.25)F ST GUIDE	96
1	1	1	-	2-21000-7	SCR,SHC(8-32x.50)STRIPPER	95
REF	REF	REF	-	3-21000-7	SCR,SHC(10-32x.75)FEED ROD GD	94
REF	REF	REF	-	3-21000-6	SCR,SHC(10-32x.62)FD ADJ BLK	93
1	1	1	-	3-21000-4	SCR,SHC(10-32x.38)SG ADJ BL	92
REF	REF	REF	-	3-21000-4	SCR,SHC(10-32x.38)PIVOT BLK	91
-	REF	-	-	455749-1	GUARD, WINDOW	90
REF	-	-	-	679532-1	INSERT, GUARD	89
1	1	1	-	854769-4	DEPRESSOR, PIN	88
1	1	1	-	21028-2	PIN, SPRING	87
1	1	1	-	5-547505-2	SPRING, HOLD DOWN	86
REF	REF	REF	-	458109-1	WASHER, SPECIAL	85
REF	REF	REF	-	690517-1	SPACER	84
-3	-2	-1	U/M	PART NO	DESCRIPTION	ITEM NO
QTY REQD PER ASSY				PARTS LIST		

LOC	DIST	REV	DESCRIPTION	DATE	OWN	APVD
A	66					
E1	ECR-09-009221			4-2009	MY	GB

-1	LEADMAKER	MECH POST FEED
-2	BENCH MODEL K	MECH PRE FEED
-3	BENCH MODEL G	MECH PRE FEED

REF	REF	REF	-	22594-8	NUT,HEX(1/2-20)	70
REF	REF	REF	-	240628-1	PLATE, ADJUSTMENT	69
REF	REF	REF	-	240626-1	SHAFT, PIVOT	68
REF	REF	REF	-	240633-1	BUSHING	67
REF	REF	REF	-	455680-1	LEVER, INTERMEDIATE	66
REF	REF	REF	-	240629-1	BLOCK, PIVOT	65
REF	REF	REF	-	240632-2	SCREW, ADJ FEED ROD	64
REF	REF	REF	-	240659-3	PIN, CAM ROLLER	63
REF	REF	REF	-	240658-1	ROLLER, CAM	62
REF	REF	REF	-	454398-2	ROD, FEED	61
REF	REF	REF	-	454178-1	GUIDE, FEED ROD	60
REF	REF	REF	-	454220-1	CAP, RAM	59
REF	REF	REF	-	454485-1	HOUSING	58
1	1	1	-	458537-2	PAWL, FEED	57
REF	REF	REF	-	240624-1	PIN, FEED FINGER	56
REF	REF	REF	-	691499-1	SPRING, FEED FINGER	55
REF	REF	REF	-	690541-1	HOLDER, FEED FINGER	54
REF	REF	REF	-	455679-1	LEVER, TERMINAL FEED ARM	53
1	1	1	-	811242-2	BUMPER, HOLDDOWN	52
1	1	1	-	690753-1	SPACER, TONKER	51
1	-	-	-	690602-6	CAM, PRE-FEED 1 5/8 ST	50
-	1	-	-	690602-5	CAM, PRE-FEED 1 1/8 ST	49
-	-	1	-	690501-4	CAM, POST-FEED 1 5/8 ST	48
1	1	1	-	459456-1	APPLICATOR, BASIC (SUBASSY)	47
1	1	1	-	690191-1	PLUG, NYLON	46
1	1	1	-	455673-1	RAM	45
1	1	1	-	469367-2	SPACER, FINE ADJUST	44
1	1	1	-	469367-9	SPACER, FINE ADJUST	43
1	1	1	-	7-21002-9	BOLT, CRIMPER(5/16x1.00)	42
1	1	1	-	879103-2	FINE ADJUST HEAD SUBASSY	41
1	1	1	-	690786-1	SUPPORT, TERMINAL	40
REF	REF	REF	-	455675-1	PLATE, BASE	39
1	1	1	-	690432-3	SCREW, ADJUSTMENT	38
REF	REF	REF	-	455689-1	BLOCK, STRIP GUIDE ADJ	37
1	1	1	-	455671-6	PLATE, STRIP GUIDE	36
1	1	1	-	1-455888-8	SPACER, FRONT SHEAR DEP	35
2	2	2	-	1-22284-0	SPRING, DRAG	34
1	1	1	-	690546-1	LEVER, DRAG RELEASE	33
1	1	1	-	240792-5	DRAG, TERMINAL	32
1	1	1	-	7-690504-6	GUIDE, STRIP (REAR)	31
1	1	1	-	1-690438-0	GUIDE, STRIP (FRONT)	30
-	-	1	-	690472-2	STRIPPER	29
REF	REF	REF	-	4-22284-9	SPRING, FEED RETURN	28
1	1	-	-	691353-1	STRIPPER	27
1	1	1	-	318563-1	GUARD, CHIP, FRONT	26
1	1	1	-	3-22280-3	SPRING, SHEAR	25
1	1	1	-	690461-1	STOP, SHEAR	24
1	1	1	-	690459-1	HOLDER, SHEAR (FRONT)	23
1	1	1	-	462006-1	SHEAR, FLOAT (FRONT)	22
1	1	1	-	2-803653-7	ANVIL	21
1	1	1	-	1-240641-6	SPACER	20
1	1	1	-	854772-1	DEPRESSOR, SHEAR (FRONT)	19
1	1	1	-	2-238011-2	SPACER, BLOCK CRIMPER	18
1	1	1	-	683453-3	CRIMPER, INSULATION	17
1	1	1	-	455888-8	SPACER, CRIMPER	16
1	1	1	-	456408-2	CRIMPER, WIRE	15
-3	-2	-1	U/M	PART NO	DESCRIPTION	ITEM NO
QTY REQD PER ASSY				PARTS LIST		

THIS DRAWING IS A CONTROLLED DOCUMENT.

DIMENSIONS: INCHES

TOLERANCES UNLESS OTHERWISE SPECIFIED:

0 PLC ± .005

1 PLC ± .005

2 PLC ± .005

3 PLC ± .005

4 PLC ± .005

ANGLES ± .005

FINISH

NAME: C. REICHELDERFER

DATE: 11FEB03

APVD: T. ELBIN

PRODUCT SPEC: 11FEB03

APPLICATION SPEC: 11FEB03

WEIGHT: 11FEB03

CUSTOMER DRAWING: 11FEB03

SIZE: A1

CAGE CODE: 00779

DRAWING NO: 1385559

RESTRICTED TO: 1

SCALE: 1

SHEET: 1

OF: 1

REV: E1

Mouser Electronics

Authorized Distributor

Click to View Pricing, Inventory, Delivery & Lifecycle Information:

[TE Connectivity:](#)

[1385559-1](#)