

4

3

2

1

THIS DRAWING IS UNPUBLISHED.

RELEASED FOR PUBLICATION

© COPYRIGHT

ALL RIGHTS RESERVED.

LOC

DIST


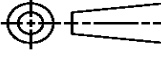
REVISIONS

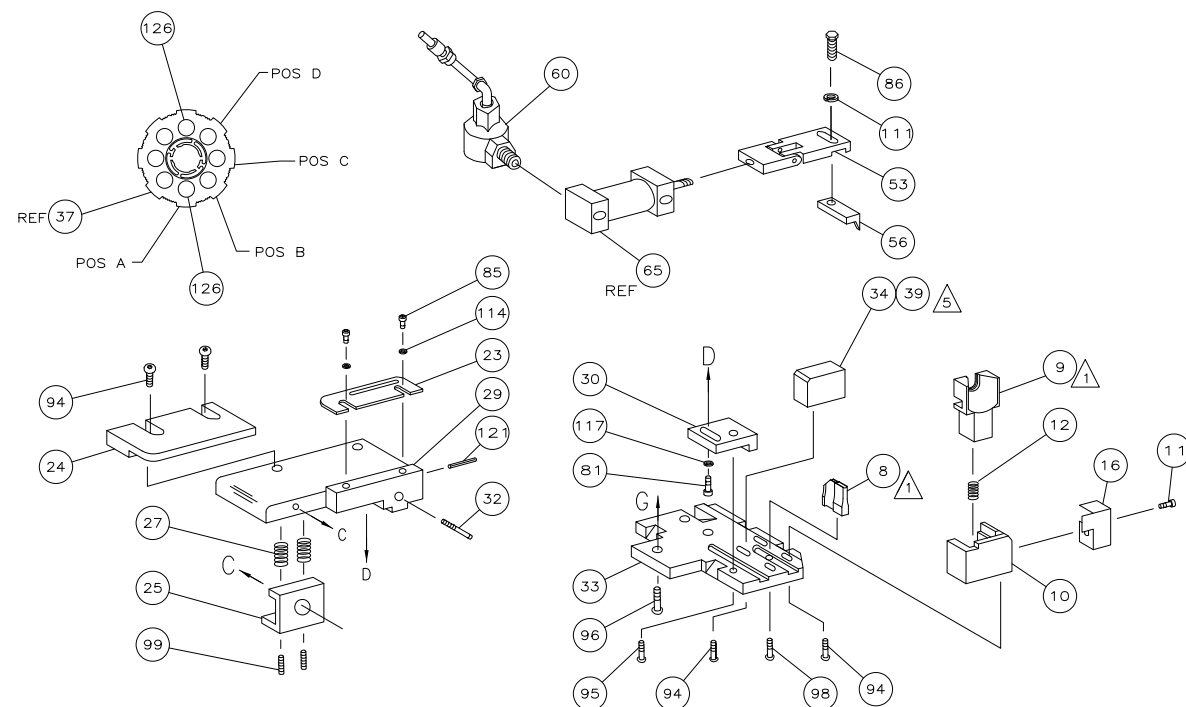
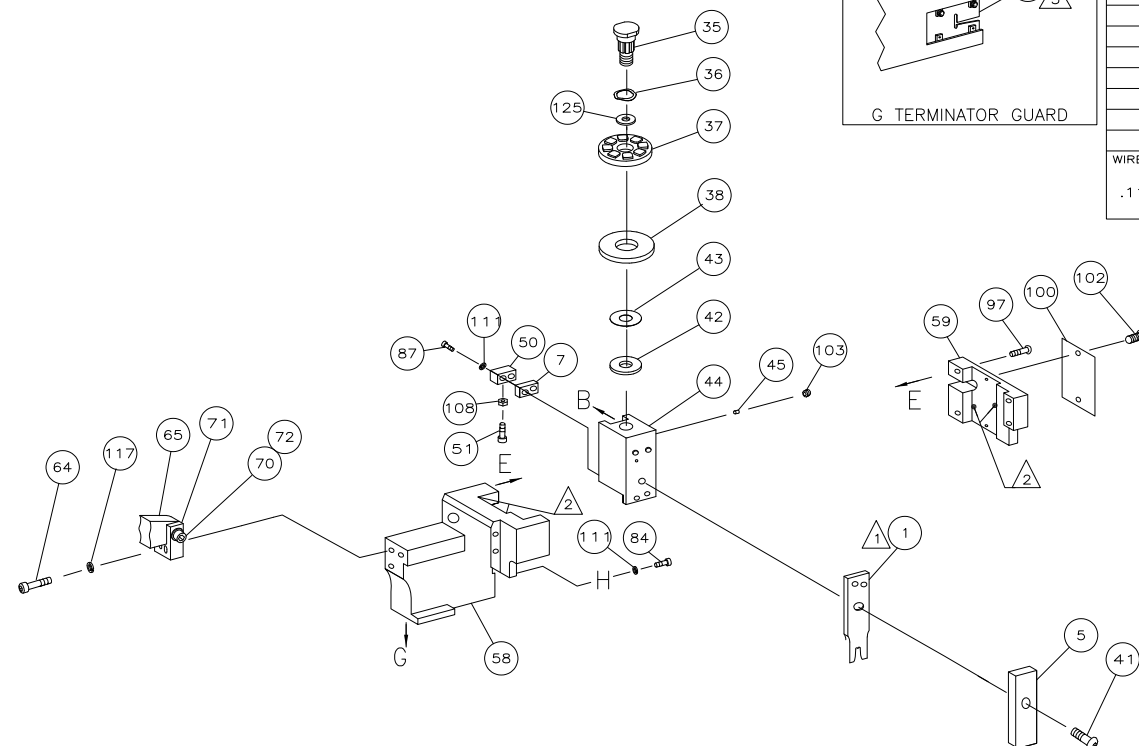
P	LTR	DESCRIPTION	DATE	DWN	APVD
	B1	ECR-15-006704	30APR2015	GK	HMR

REPLACED BY OCEAN STYLE APPLICATOR PART
NUMBER 2266736-2

FOR REPLACEMENT PARTS FOR APPLICATOR 1385456
REFER TO ADDITIONAL PAGE(S). SPARE PARTS KIT (IF LISTED)
WILL REMAIN AVAILABLE.

THE REPLACEMENT OCEAN STYLE APPLICATOR HAS THE
SAME TERMINATOR/PRESS INTERFACE AS APPLICATOR
1385456

THIS DRAWING IS A CONTROLLED DOCUMENT.		DWN GOPALAKRISHNA HV		 TE Connectivity	
DIMENSIONS:		CHK RAGHAVENDRA			
		TOLERANCES UNLESS OTHERWISE SPECIFIED:		APVD RAGHAVENDRA	
		0 PLC ±		NAME	
		1 PLC ±		SIDE FEED HDM APPLICATOR	
MATERIAL		2 PLC ±		PRODUCT SPEC	
		3 PLC ±		APPLICATION SPEC	
		4 PLC ±		SIZE CAGE CODE DRAWING NO RESTRICTED TO	
FINISH		WEIGHT		C- 1385456	
		CUSTOMER DRAWING		SCALE SHEET 1 OF 2 REV B1	



-
- BENCH MACHINE

TERMINAL NAME: SOCKET CRIMPED PLUG										
1488535		AMP TERMINAL		AMP CRIMP SPECS						
1488534				CRIMP HEIGHT				WIRE SIZE		
1438896-2				A	.034 ±.002 [0.86 ±0.05mm]			RG-58 LOW LOSE OR RG-58		
1438890-7				B	NOT			USED		
				C	NOT			USED		
		D	NOT			USED				
		CRIMP		SIZE		TYPE		RANGE		
		WIRE		.062 [1.57mm]		F		18-20		
		INSUL		-		-		-		
WIRE STRIP LENGTH		TERM APPL SPEC		FEED		APPL INSTRUCTION		SET UP GAGE		LAYOUT
.110 [2.80mm]		114-13069		.300 [7.60mm]		408-8040		458637-1		L2695

						129
						128
						127
2	-	-	-	4-354779-9	PIN, WIRE DISC (.3235)A	126
1	-	-	-	986950-1	WASHER, FLAT PRECISION	125
1	-	-	-	217238-1	GENERAL INSTRUCTION PACKAGE	124
1	-	-	-	4088040	SF APPL INST 408-8040	123
						122
1	-	-	-	4-21028-0	PIN,SLT SPR(Ø.093x.75)ST GDE PL	121
						120
						119
						118
3	-	-	-	21024-5	WASHER, LOCK(#10)ADJ BLOCK	117
						116
						115
2	-	-	-	21024-2	WASHER,LOCK(#4)FRONT STP GUIDE	114
						113
						112
2	-	-	-	21024-4	WASHER,LOCK(#8)STRIPPER	111
						110
						109
1	-	-	-	21018-5	NUT, HEX (NO.6) HOLDDOWN	108
						107
						106
						105
						104
1	-	-	-	21009-2	SCR,SKT SET(1/4-20x.25 LW)RAM	103
2	-	-	-	21017-2	SCR,DRIVE(#2x.19)ID PLATE	102
						101
1	-	-	-	461264-1	PLATE, IDENTIFICATION	100
						99
1	-	-	-	5-21006-6	SCR,SET(10-32x.75)DRAG	99
1	-	-	-	22733-8	SCR,BHC(8-32x.38 LW)ANVIL	98
4	-	-	-	2-21002-9	SCR,BHC(10-32x.75)CAP	97
3	-	-	-	2-22733-8	SCR,BHC(1/4-20x.62)HSG	96
1	-	-	-	2-21002-7	SCR,BHC(10-32x.50)SG ADJ BLK	95
6	-	-	-	2-21002-2	SCR,BHC(8-32x.50)TERM H DWN	94
						93
						92
						91
						90
						89
						88
2	-	-	-	2-21000-7	SCR,SHC (8-32x.50)HOLD DOWN	87
1	-	-	-	2-22603-1	SCR,HEX HD(8-32x.38)FEED FINGER	86
1	-	-	-	1-21000-3	SCR,SHC(4-40x.25)FR ST GUIDE	85
1	-	-	-	2-21000-7	SCR,SHC(8-32x.50)STRIPPER	84
						83
						82
1	-	-	-	3-21000-4	SCR,SHC(10-32x.38)SG ADJ BL	81
						80
REF	-	-	-	679532-1	INSERT, GUARD	78
						77
						76
						75
						74
						73
1	-	-	-	3-21001-5	SCR,SHC(3/8-16X1.00)AIR FEED	72
1	-	-	-	459610-1	MOUNT, FEED BRACKET	71
-3	-2	-1	U/M	PART NO	DESCRIPTION	ITEM NO
QTY REQD PER ASSY				PARTS LIST		

[illegible]

Mouser Electronics

Authorized Distributor

Click to View Pricing, Inventory, Delivery & Lifecycle Information:

[TE Connectivity:](#)

[1385456-3](#)