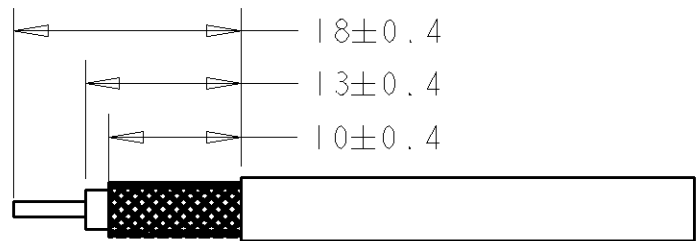
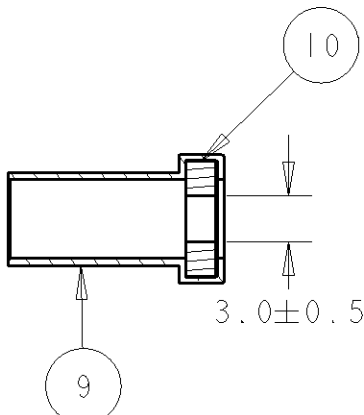
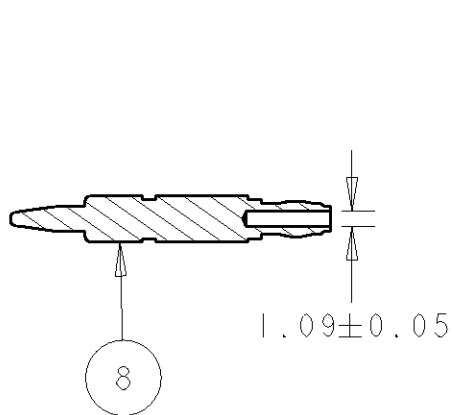
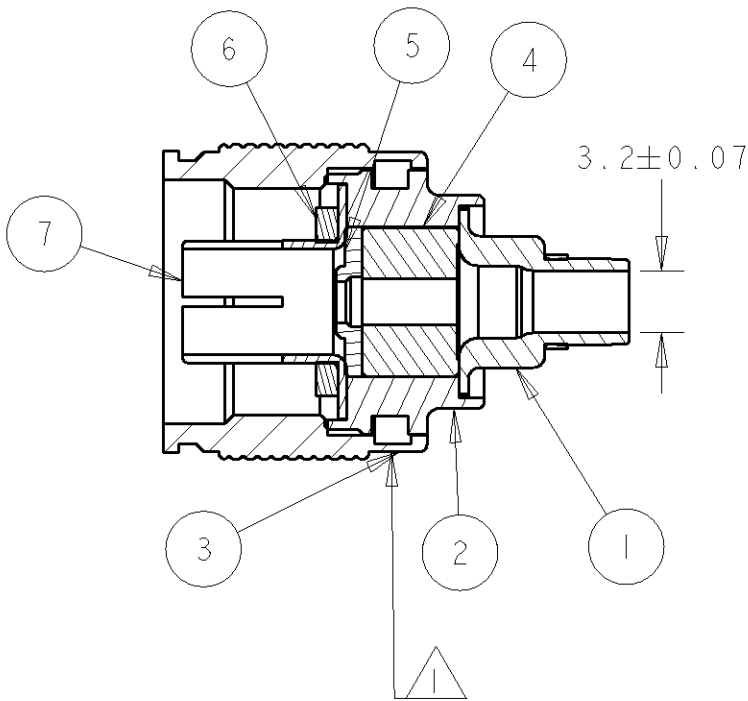


| | | | | | | | | | |
|-----|------|-----------|-----|---------------|--|--|----------|-----|------|
| 2 | | 1 | | | | | | | |
| LOC | DIST | REVISIONS | | | | | | | |
| B | E | P | LTR | DESCRIPTION | | | DATE | DWN | APVD |
| | | | B | ECR-08-018079 | | | 18/07/08 | MJG | JA |
| | | | | | | | | | |
| | | | | | | | | | |
| | | | | | | | | | |



RECOMMENDED CABLE PREPARATION

NOTES:

1. PART NO 134007-1 ON INDICATED SURFACE TO TYCO ELECTRONICS SPEC 106-12001

2. FOR USE WITH FILECA F1703/4 CABLE

3. CRIMP WITH HAND TOOL PART NO 220045-2

| | | | | | |
|--------|--------|--------|-------------|---------------|------|
| | I | | SILICONE | GASKET | 10 |
| | I | Ag | BRASS | SHELL | 9 |
| | I | Au | BRASS | CONTACT | 8 |
| | I | Ag | PhBz | OUTER CONTACT | 7 |
| | I | | SILICONE | GASKET | 6 |
| | I | | PTFE | DIELECTRIC | 5 |
| | I | | PTFE | DIELECTRIC | 4 |
| | I | Ag | BRASS | COUPLING NUT | 3 |
| | I | Ag | BRASS | BODY | 2 |
| | I | Ag | BRASS | FERRULE | 1 |
| 134007 | -1 QTY | FINISH | DESCRIPTION | PART NO | ITEM |

| | | | | |
|--|--|--------------------------------|---|--|
| THIS DRAWING IS A CONTROLLED DOCUMENT FOR TYCO ELECTRONICS CORPORATION IT IS SUBJECT TO CHANGE AND THE CONTROLLING ENGINEERING ORGANIZATION SHOULD BE CONTACTED FOR THE LATEST REVISION. | | DWN M.GREENER 18JUL2008 | Tyco Electronics UK Ltd. Bideford, North Devon, EX39 4HE | |
| DIMENSIONS: mm | | CHK J.AMBROSE 18JUL2008 | NAME COAXION RF, N SERIES ASSEMBLY WEATHERPROOF FILECA CABLE F1703/4 | |
| TOLERANCES UNLESS OTHERWISE SPECIFIED: 0 PLC ±0.5 1 PLC ±0.1 2 PLC ±0.1 3 PLC ±0.1 4 PLC ±0.1 ANGLES ±0.5 FINISH - | | APVD J.AMBROSE 18JUL2008 | SIZE A300779 | |
| MATERIAL SEE TABLE | | PRODUCT SPEC 108-12019 | CAGE CODE C-134007 | |
| | | APPLICATION SPEC - | DRAWING NO - | |
| | | WEIGHT - | RESTRICTED TO - | |
| | | CUSTOMER DRAWING | SCALE 2:1 | |
| | | | SHEET 1 OF 1 | |
| | | | REV B | |

Mouser Electronics

Authorized Distributor

Click to View Pricing, Inventory, Delivery & Lifecycle Information:

[TE Connectivity:](#)

[134007-1](#)