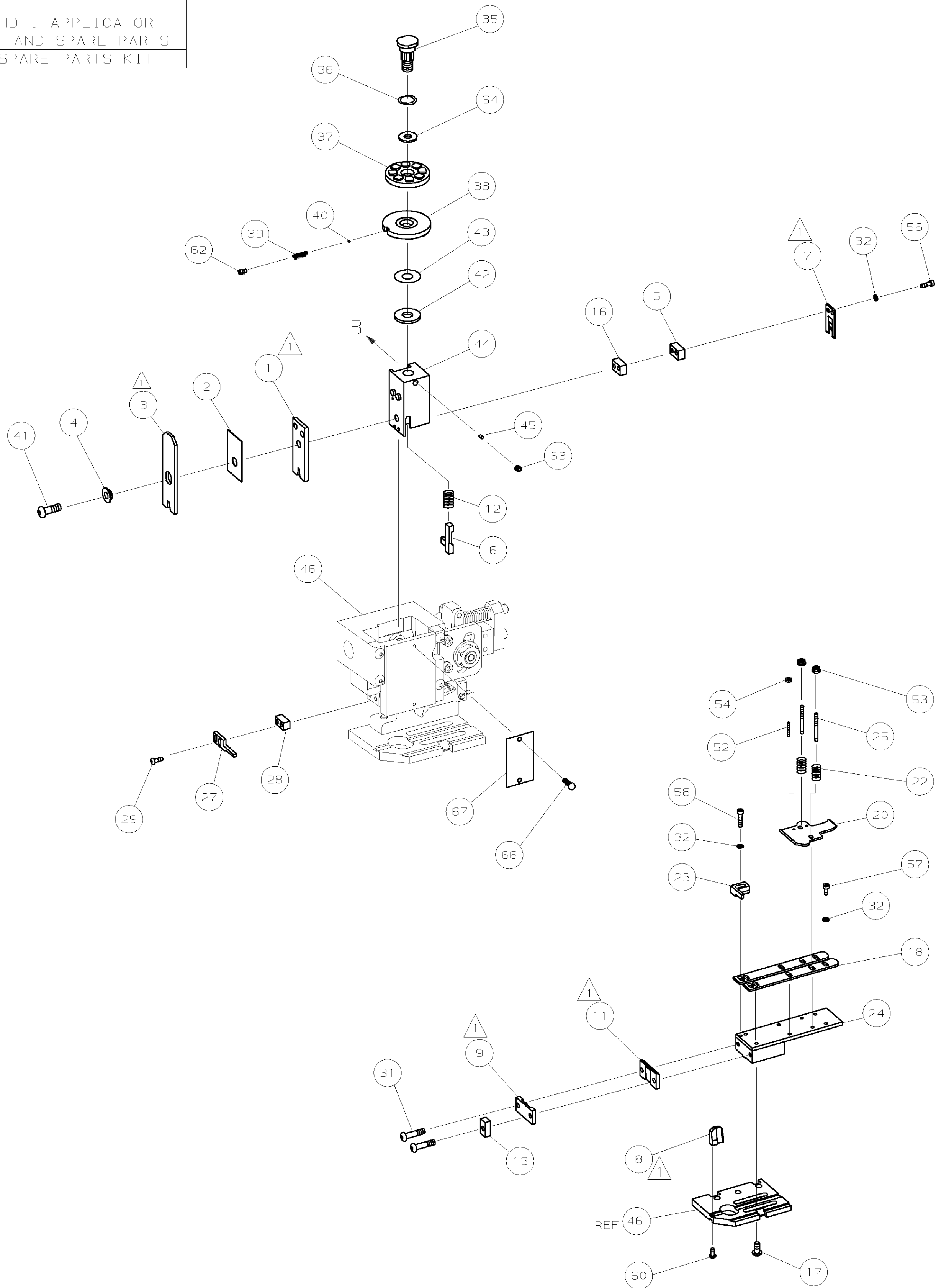


1. RECOMMENDED SPARE PARTS.
2. GREASE RAM, CAM, CAM FOLLOWER AND FEED ROD LIGHTLY.
3. LUBRICATE DAILY PER THE APPLICATOR INSTRUCTION SHEET SUPPLIED WITH THE APPLICATOR.
4. CRIMP DATA QUOTED IS SPECIFIC FOR GERMAN MARKET.
5. INSULATION CRIMP FORM QUOTED IS SPECIFIC FOR GERMAN MARKET.



					73
-	1	1	1339685	PRINT, APPLICATOR LOG SHEET	72
-	1	1	1338705-2	DOCUMENTATION PACKAGE	71
					70
					69
					68
-	1	1	461264-1	PLATE, IDENTIFICATION	67
-	2	2	21017-2	SCR,DRIVE (#2X.19) ID PLATE	66
					65
-	1	1	986950-1	WASHER, FLAT PRECISION	64
-	1	1	3-18031-0	SCR,SKT SET (M6X6) RAM	63
-	1	1	18023-9	SCR,SKT CAP (M4X6) CP DSC	62
					61
-	1	1	18024-7	SCR,BHC (M4X10) ANVIL	60
					59
-	2	2	1-18023-3	SCR,SHC (M4X16)HOLD DOWN	58
-	5	5	18023-9	SCR,SHC (M4X6) STRIP GUIDE	57
-	2	2	1-18023-2	SCR,SHC (M4X12) SLUG BLADE	56
					55
-	2	2	18029-1	NUT, HEX (M3) DRAG	54
-	2	2	986965-1	NUT,HEX SL (M4) DRAG STUD	53
-	2	2	2-18032-2	SCR,SKT SET (M3X10) DRAG	52
					51
					50
-	1	1	18024-3	SCR,BHC (M3X10) CAM	49
					48
-	1	1	1338676-1	CAM, POST-FEED 30 & 40 mm ST	47
-	1	1	1338662-1	APPLICATOR, BASIC (SUBASSY)	46
-	1	1	690191-1	PLUG, NYLON	45
-	1	1	1320998-1	RAM	44
-	1	1	690125-1	WASHER, LAMINATED	43
-	1	1	690124-1	WASHER, RAM	42
-	1	1	2-18024-6	SCREW,BHC (M8X25) CRIMPER	41
-	1	1	23241-1	BALL, STEEL	40
-	1	1	2-22278-7	SPRING, COMPRESSION	39
-	1	1	1320922-1	DISC, INSULATION	38
-	1	1	354777-1	WIRE DISC, PLASTIC	37
-	1	1	22480-5	WASHER, SPRING	36
-	1	1	690212-1	POST, RAM	35
					34
					33
-	9	9	18025-2	WASHER,LOCK (M4) SHEAR BL	32
-	2	2	1-18024-0	SCR,BHC (M4X20)SHEAR PL	31
					30
-	2	2	18024-8	SCR,BHC (M4X12)STRIPPER	29
-	1	1	3-690451-2	SPACER, STRIPPER	28
-	1	1	240639-1	STRIPPER	27
					26
-	2	2	1320906-1	DRAG, STUD	25
-	1	1	1320995-9	STRIP GUIDE	24
-	1	1	240825-7	PLATE, STRIP HOLD DOWN	23
-	2	2	4-22281-1	SPRING, DRAG	22
					21
-	1	1	1338665-1	DRAG, STOCK	20
					19
-	2	2	1338663-6	GUIDE, LOWER STRIP	18
-	4	4	1-18024-8	SCR,BHC (M6X12)STRIP GD PL	17
-	1	1	1338708-1	SPACER, SLUG BLADE	16
					15
					14
-	1	1	690481-2	SPACER, HOLD DOWN	13
-	1	1	23846-1	SPRING, HOLD DOWN	12
-	1	1	240833-2	PLATE, REAR SHEAR	11
					10
-	1	1	690482-3	PLATE, FRONT SHEAR	9
1	2	1	2-1333217-7	ANVIL	8
-	1	1	690474-3	BLADE, SLUG	7
-	1	1	2-455892-7	HOLD DOWN, TERMINAL	6
-	1	1	2-240641-0	SPACER, SLUG BLADE	5
-	1	1	238009-1	SPACER, BLOCK CRIMPER	4
1	2	1	854830-5	CRIMPER, INSULATION	3
-	1	1	1-455888-0	SPACER, CRIMPER	2
1	2	1	1-456406-2	CRIMPER, WIRE	1
-77	-71	-1	PART NO	DESCRIPTION	ITEM NO
			← REVISION OF EACH ASSY NO (WHEN BLANK, USE DWG REVISION)		

		-77 -71 -1		PART NO		DESCRIPTION		ITEM NO		
				← REVISION OF EACH ASSY NO (WHEN BLANK, USE DWG REVISION)						
QTY REQD PER ASSY										
PARTS LIST										
		DIMENSIONS: mm [INCHES]		MATL		HT TR		FIN		
		DO NOT SCALE PRINT.								
		TOLERANCES UNLESS OTHERWISE SPECIFIED:		DR M. CLIFFORD		APP 16JAN03 F. BACKHURST		AMP AMP Incorporated Harrisburg, PA 17105-3608		
		1 PLC DEC ±		CHK -		REL 25FEB03 L. LOFTHOUSE				
		2 PLC DEC ±								
		3 PLC DEC ±								
		ANGLES ±		NAME		END FEED HD-I APPLICATOR		MACHINE REF HD-I APPL		
		SURF TEXTURE: ✓		SCALE		1339685		SHEET 1 OF 1 REV A		
LJL APP		FEB03 DATE		REMOVE BURRS, BREAK SHARP EDGES R.38 MAX		D DWG NO				
		CAGE CODE 00779		CUSTOMER AND ASSEMBLY DRAWING					RESTRICTED TO -	

# Mouser Electronics

Authorized Distributor

Click to View Pricing, Inventory, Delivery & Lifecycle Information:

[TE Connectivity:](#)

[1339685-1](#)