

PART NUMBER	REV	FIRST USED	TERMINATOR	FEED TYPE	DESCRIPTION
1339674-1	C		BENCH & LEADMAKER	MECH POST FEED	HD-I APPLICATOR
7-1339674-1	C		BENCH & LEADMAKER	MECH POST FEED	-1 AND SPARE PARTS
7-1339674-7	A		-	-	SPARE PARTS KIT

CRIMP DATA AMP TERMINAL AMP CRIMP SPECS

TERMINAL NAME: FASTIN-FASTON CONNECTOR .250 SR REC CONTACT

CRIMP	SIZE	TYPE	RANGE
WIRE	4.06 [.160 IN]	F	4.00-6.00mm ²
INSUL	5.33 [.210 IN]	F	3.40-5.10 [.134-.201 IN]
WIRE STRIP LENGTH SEE APPL SPEC.		APPL INSTRUCTION 408-8323	

TERMINAL
APPL SPEC

114-20021

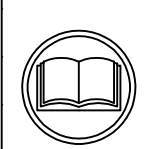
FEED
21.45 [.844 IN]

TERMINALS APPLIED

180351	-	-	-	-
180560	-	-	-	-
-	-	-	-	-
-	-	-	-	-
-	-	-	-	-
-	-	-	-	-
-	-	-	-	-
-	-	-	-	-
-	-	-	-	-

WIRE SIZE mm ² AWG	CRIMP HEIGHT	PIN PN & LENGTH [IN]
6.00mm ²	2.34 ±0.05 [.092 ±.002 IN]	5-354778-3 [.2760]
10 AWG	2.21 ±0.05 [.087 ±.002 IN]	6-354778-4 [.2815]
5.00mm ²	2.16 ±0.05 [.085 ±.002 IN]	6-354778-8 [.2835]
4.00mm ²	1.96 ±0.05 [.077 ±.002 IN]	8-354778-6 [.2925]
-	-	-
-	-	-
-	-	-
-	-	-
-	-	-
-	-	-
-	-	-
-	-	-
-	-	-
-	-	-
-	-	-

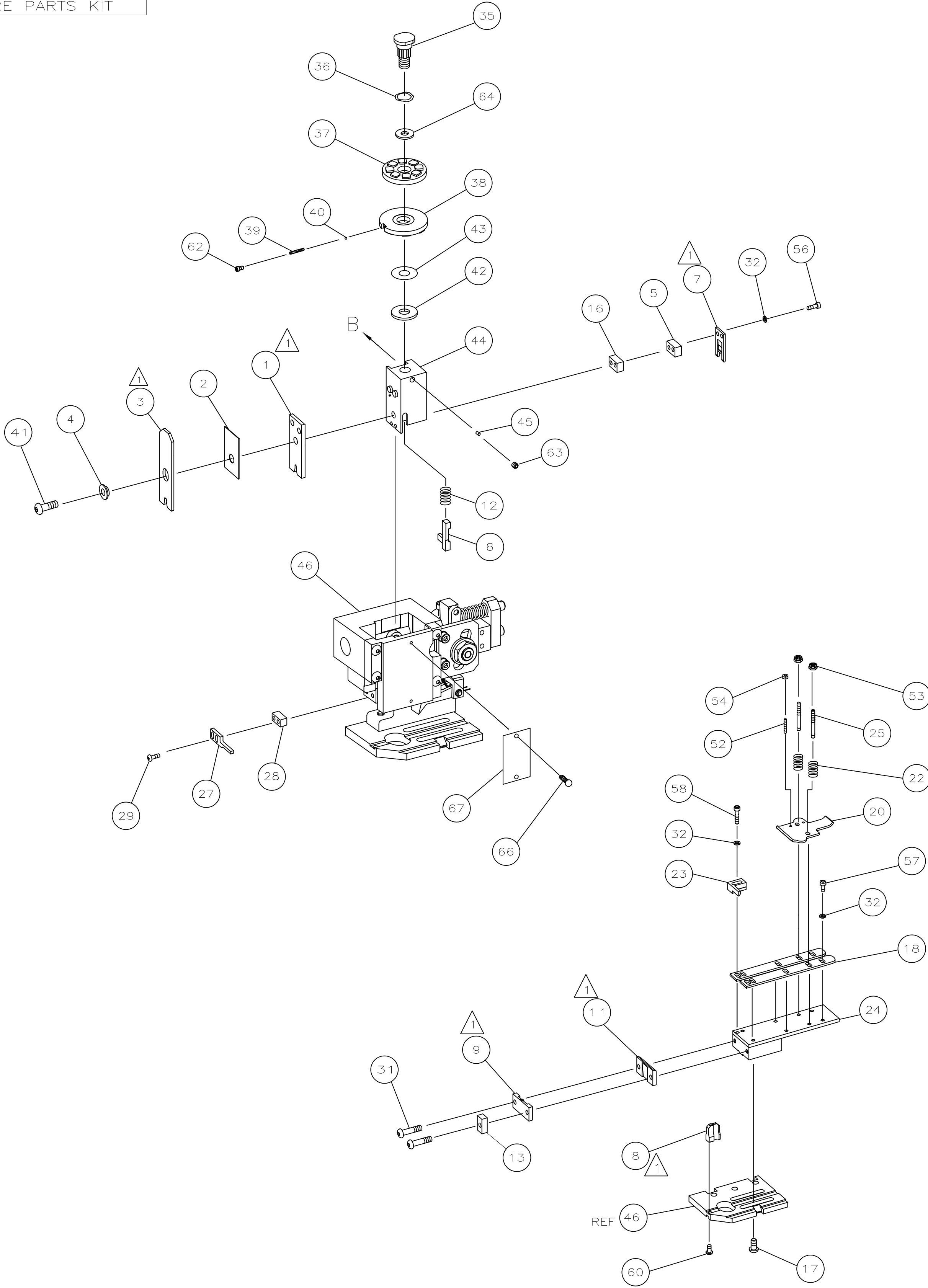
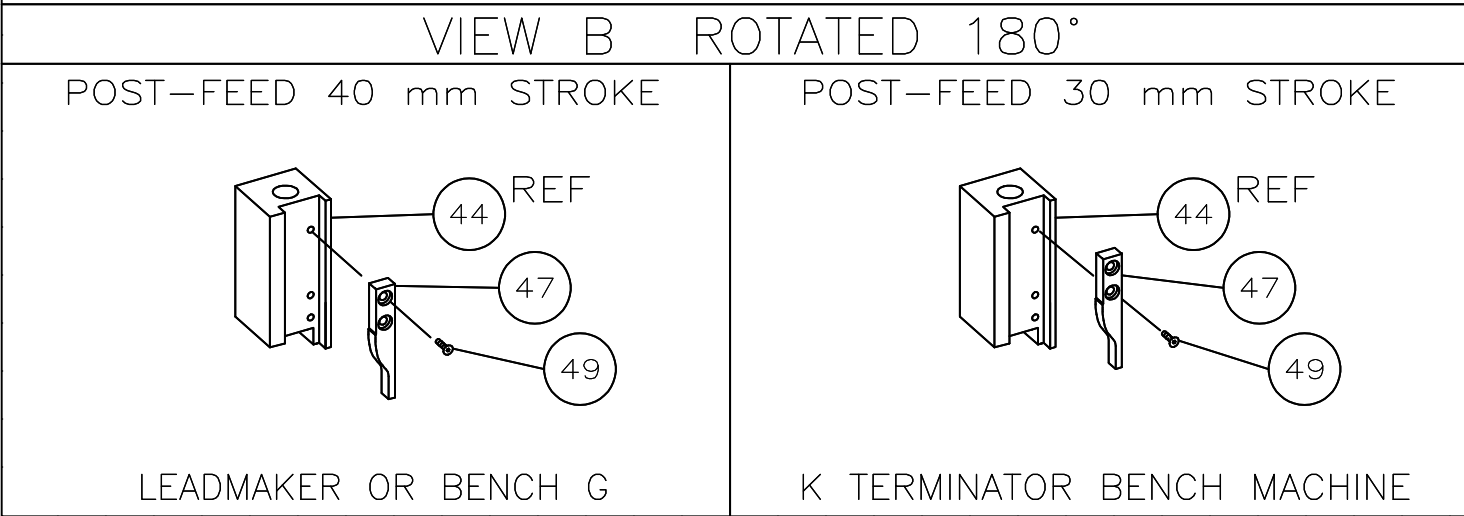
SET UP GAGE LAYOUT
458638-3 L2486

- 

RECOMMENDED SPARE PARTS.
2.

GREASE RAM, CAM, CAM FOLLOWER AND FEED ROD LIGHTLY.
3.

LUBRICATE DAILY PER THE APPLICATOR INSTRUCTION SHEET SUPPLIED WITH THE APPLICATOR.



LOC	DIST	REVISIONS					
		P	LTR	DESCRIPTION	DATE	DWN	APVD
A	66		C	ECR-08-018030	7-2008	MY	TE

-	-	-	-	-	-	73
-	1	1	1339674	PRINT, APPLICATOR LOG SHEET	-	72
-	1	1	1338705-2	DOCUMENTATION PACKAGE	-	71
-	-	-	-	-	-	70
-	-	-	-	-	-	69
-	-	-	-	-	-	68
-	1	1	461264-1	PLATE, IDENTIFICATION	-	67
-	2	2	21017-2	SCR,DRIVE(#2X.19)ID PLATE	-	66
-	-	-	-	-	-	65
-	1	1	986950-1	WASHER, FLAT PRECISION	-	64
-	1	1	3-18031-0	SCR,SKT SET(M6X6)RAM	-	63
-	1	1	18023-9	SCR,SKT CAP(M4X6)CP DSC	-	62
-	-	-	-	-	-	61
-	1	1	18024-7	SCR,BHC(M4X10)ANVIL	-	60
-	-	-	-	-	-	59
-	2	2	1-18023-4	SCR,SHC(M4X20)HOLD DOWN	-	58
-	5	5	1-18023-0	SCR,SHC(M4X8)STRIP GUIDE	-	57
-	2	2	9-18023-6	SCR,SHC(M4X14)SLUG BLADE	-	56
-	-	-	-	-	-	55
-	2	2	18029-1	NUT,HEX(M3)DRAG	-	54
-	2	2	986965-1	NUT,HEX SL(M4)DRAG STUD	-	53
-	2	2	2-18032-2	SCR,SKT SET(M3X10)DRAG	-	52
-	-	-	-	-	-	51
-	-	-	-	-	-	50
-	1	1	18024-3	SCR,BHC(M3X10)CAM	-	49
-	-	-	-	-	-	48
-	1	1	1338676-1	CAM, POST-FEED 30 & 40 mm ST	-	47
-	1	1	1338662-2	APPLICATOR, BASIC (SUBASSY)	-	46
-	1	1	690191-1	PLUG, NYLON	-	45
-	1	1	1320998-1	RAM	-	44
-	1	1	690125-1	WASHER, LAMINATED	-	43
-	1	1	690124-1	WASHER, RAM	-	42
-	1	1	2-18024-6	SCREW,BHC(M8X25)CRIMPER	-	41
-	1	1	23241-1	BALL, STEEL	-	40
-	1	1	2-22278-7	SPRING, COMPRESSION	-	39
-	1	1	1320922-1	DISC, INSULATION	-	38
-	1	1	354777-1	WIRE DISC, PLASTIC	-	37
-	1	1	22480-5	WASHER, SPRING	-	36
-	1	1	690212-1	POST, RAM	-	35
-	-	-	-	-	-	34
-	-	-	-	-	-	33
-	9	9	18025-2	WASHER,LOCK(M4)SHEAR BL	-	32
-	2	2	1-18024-0	SCR,BHC(M4X20)SHEAR PL	-	31
-	-	-	-	-	-	30
-	2	2	18024-8	SCR,BHC(M4X12)STRIPPER	-	29
-	1	1	3-690451-2	SPACER, STRIPPER	-	28
-	1	1	690455-7	STRIPPER	-	27
-	-	-	-	-	-	26
-	2	2	1320906-1	DRAG, STUD	-	25
-	1	1	1320995-3	STRIP GUIDE	-	24
-	1	1	240825-8	PLATE, STRIP HOLD DOWN	-	23
-	2	2	3-22281-8	SPRING, DRAG	-	22
-	-	-	-	-	-	21
-	1	1	1338665-1	DRAG, STOCK	-	20
-	-	-	-	-	-	19
-	2	2	1338663-6	GUIDE, LOWER STRIP	-	18
-	4	4	1-18024-8	SCR,BHC(M6X12)STRIP GD PL	-	17
-	1	1	1338708-1	SPACER, SLUG BLADE	-	16
-	-	-	-	-	-	15
-	-	-	-	-	-	14
-	1	1	690481-2	SPACER, HOLD DOWN	-	13
-	1	1	23846-1	SPRING, HOLD DOWN	-	12
-	1	1	240833-3	PLATE, REAR SHEAR	-	11
-	-	-	-	-	-	10
-	1	1	690482-3	PLATE, FRONT SHEAR	-	9
1	2	1	1-1333223-5	ANVIL	-	8
-	1	1	690474-3	BLADE, SLUG	-	7
-	1	1	2-455892-7	HOLD DOWN, TERMINAL	-	6
-	1	1	240641-3	SPACER, SLUG BLADE	-	5
-	1	1	238009-1	SPACER, BLOCK CRIMPER	-	4
1	2	1	6-683453-8	CRIMPER, INSULATION	-	3
-	1	1	455888-9	SPACER, CRIMPER	-	2
1	2	1	456427-2	CRIMPER, WIRE	-	1

QTY REQD PER ASSY		PARTS LIST	
THIS DRAWING IS A CONTROLLED DOCUMENT.		DWN M. CLIFFORD 11OCT02	Tyco Electronics Corporation
CHK -		APVD F. BACKHURST 11OCT02	Harrisburg, PA 17105-3608
DIMENSIONS: INCHES		NAME	END FEED HD-I APPLICATOR
TOLERANCES UNLESS OTHERWISE SPECIFIED:		SIZE	CAGE CODE
0 PLC ± -		1	DRAWING NO
1 PLC ± -		2	RESTRICTED TO
2 PLC ± -		3	
3 PLC ± -		4	
4 PLC ± -		5	
ANGLES FINISH		6	
MATERIAL -		7	
FINISH -		8	
WEIGHT -		9	
CUSTOMER DRAWING		10	
SCALE -		11	
SHEET 1 OF 1		12	
REV C		13	

Mouser Electronics

Authorized Distributor

Click to View Pricing, Inventory, Delivery & Lifecycle Information:

[TE Connectivity:](#)

[1339674-1](#)