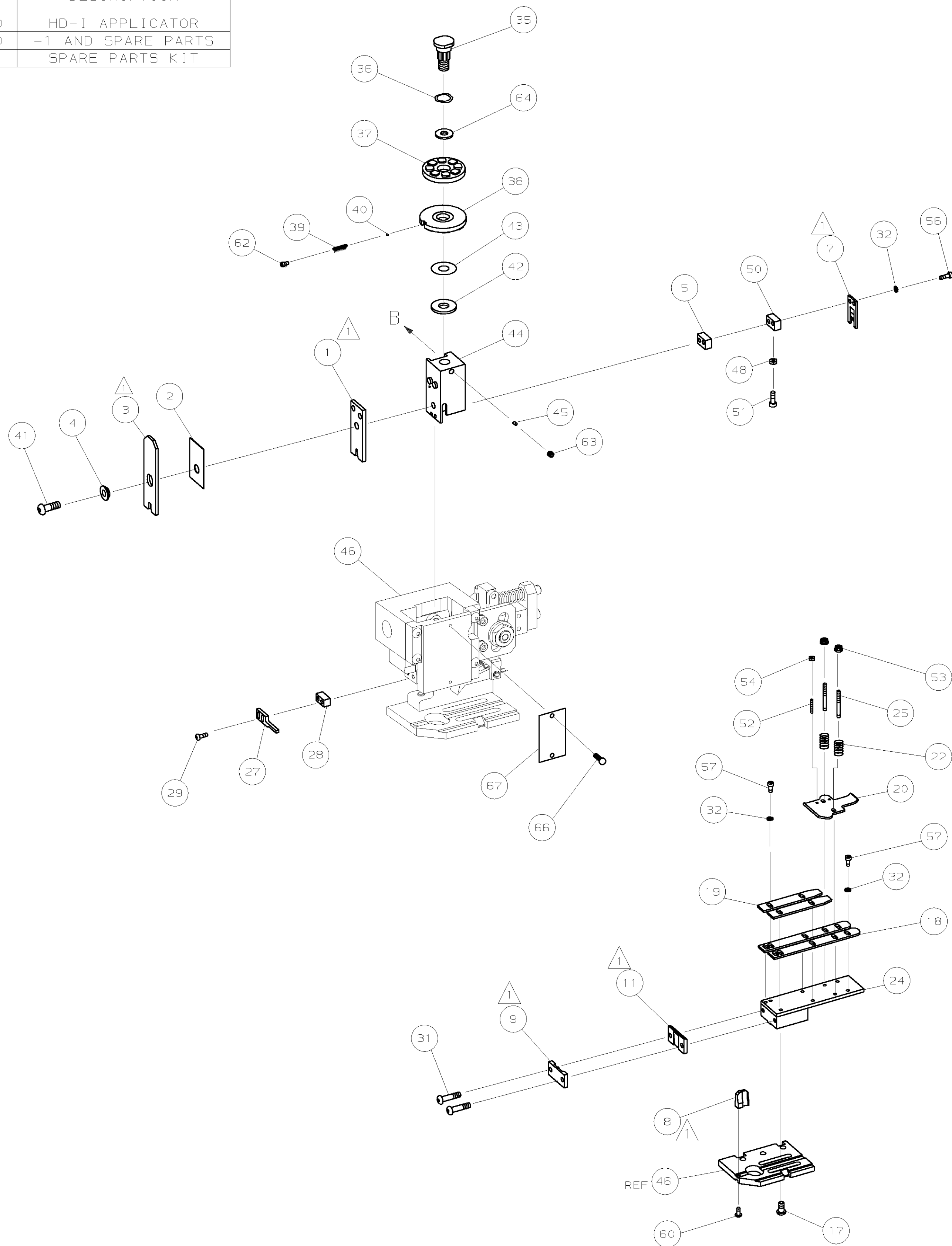



1. RECOMMENDED SPARE PARTS.
2. GREASE RAM, CAM, CAM FOLLOWER AND FEED ROD LIGHTLY.
3. LUBRICATE DAILY PER THE APPLICATOR INSTRUCTION SHEET SUPPLIED WITH THE APPLICATOR.
4. CUT TO LENGTH ON ASSY.



-77-71		-1	PART NO		DESCRIPTION		ITEM NO
REVISION OF EACH ASSY NO (WHEN BLANK, USE DWG REVISION)							
PARTS LIST							
REGD PER ASSY		MATERIAL		HT TR		FIN	
UNITS: mm [INCHES] SCALE PRINT. UNITS: UNLESS SPECIFIED:		DR 150CT01 L.L.OFFHOUSE		APP 150CT01 F.BACKHURST		 AMP Incorporated Harrisburg, PA 17105-3608	
EC ± EC ± EC ± ±		CHK - REL 19-03-02 M.CLIFFORD					
TEXTURE: ✓ BURRS, BREAK EDGES R0.38 MAX		NAME END FEED HD-I APPLICATOR				MACHINE REF HD-I APPL	
SCALE -		DWG NO 1339594		SHEET 1 OF 1		REV A	
CUSTOMER AND ASSEMBLY DRAWING							RESTRICTED TO

		A	SEE ECN 015A-0198-02
P	F	LTR	REVISION RECORD

-77		-71		PART NO		DESCRIPTION		ITEM NO	
				← REVISION OF EACH ASSY NO (WHEN BLANK, USE DWG REVISION)					
QTY REQD PER ASSY				PARTS LIST					
DIMENSIONS: mm [INCHES] DO NOT SCALE PRINT. TOLERANCES UNLESS OTHERWISE SPECIFIED: 1 PLC DEC ± 2 PLC DEC ± 3 PLC DEC ± ANGLES ± SURF TEXTURE: ✓				MATL - DR 150CT01 L:LOFHOUSE CHK - 150CT01 F:BACHURST REL 19-03-02 M:CLIFFORD		HT TR - FIN -		AMP AMP Incorporated Harrisburg, PA 17105-3608	
NAME END FEED HD-I APPLICATOR SCALE - D DWG NO 1339594				MACHINE REF HD-I APPL		SHEET 1 of 1 REV A		RESTRICTED TO -	
MC MAR20 APP DATE		REMOVE BURRS, BREAK SHARP EDGES RO.38 MAX		CASE CODE 00779		CUSTOMER AND ASSEMBLY DRAWING			

Mouser Electronics

Authorized Distributor

Click to View Pricing, Inventory, Delivery & Lifecycle Information:

[TE Connectivity:](#)

[1339594-1](#)